

BLU RANGE

## SLIM KNUCKLE WINDOW HINGE - SQUARE CORNER

Product Code: HY3

LIT-DC-HY3



### *316 Marine Grade Stainless Steel Hardware Range*

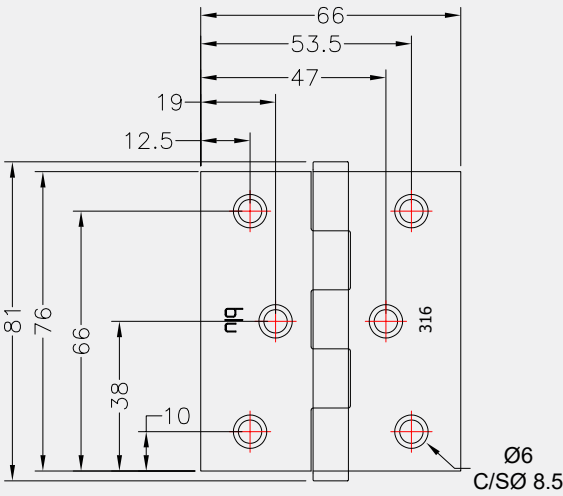
- Ultimate high quality butt hinge made from 316 Marine Grade Stainless Steel
- Clean lined, slim knuckle window hinge
- Precision engineered components ensure a 'smooth friction' operation & prevent hinge from collapsing
- No leaf play ensures an accurate and consistent fit
- Durability tested to 100,000 cycles
- Works well with the Shimwell Hinge Packer System
- Ideal for use where corrosion levels are high such as coastal environments and with acidic timber
- Lifetime guarantee



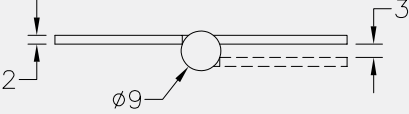
# COASTAL

*Shaping the future.*

Front Profile



Top Profile



Visit [www.coastal-group.com](http://www.coastal-group.com) for CAD drawings

FINISHES:



**SSS**  
Satin Stainless Steel



**PSS**  
Polished Stainless Steel



**PPB**  
Polished Brass



**MSB**  
Matt Black



**ORB**  
Oil Rubbed Bronze

PART NUMBER	PRODUCT DESCRIPTION	FINISH	UNITS
HY3-SSS	76 x 65 x 2mm Window hinge	<b>SSS</b>	Each
HY3-PSS	76 x 65 x 2mm Window hinge	<b>PSS</b>	Each
HY3-PPB	76 x 65 x 2mm Window hinge	<b>PPB</b>	Each
HY3-MBK	76 x 65 x 2mm Window hinge	<b>MSB</b>	Each
HY3-ORB	76 x 65 x 2mm Window hinge	<b>ORB</b>	Each



**COASTAL**

*Shaping the future.*