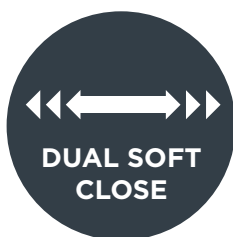
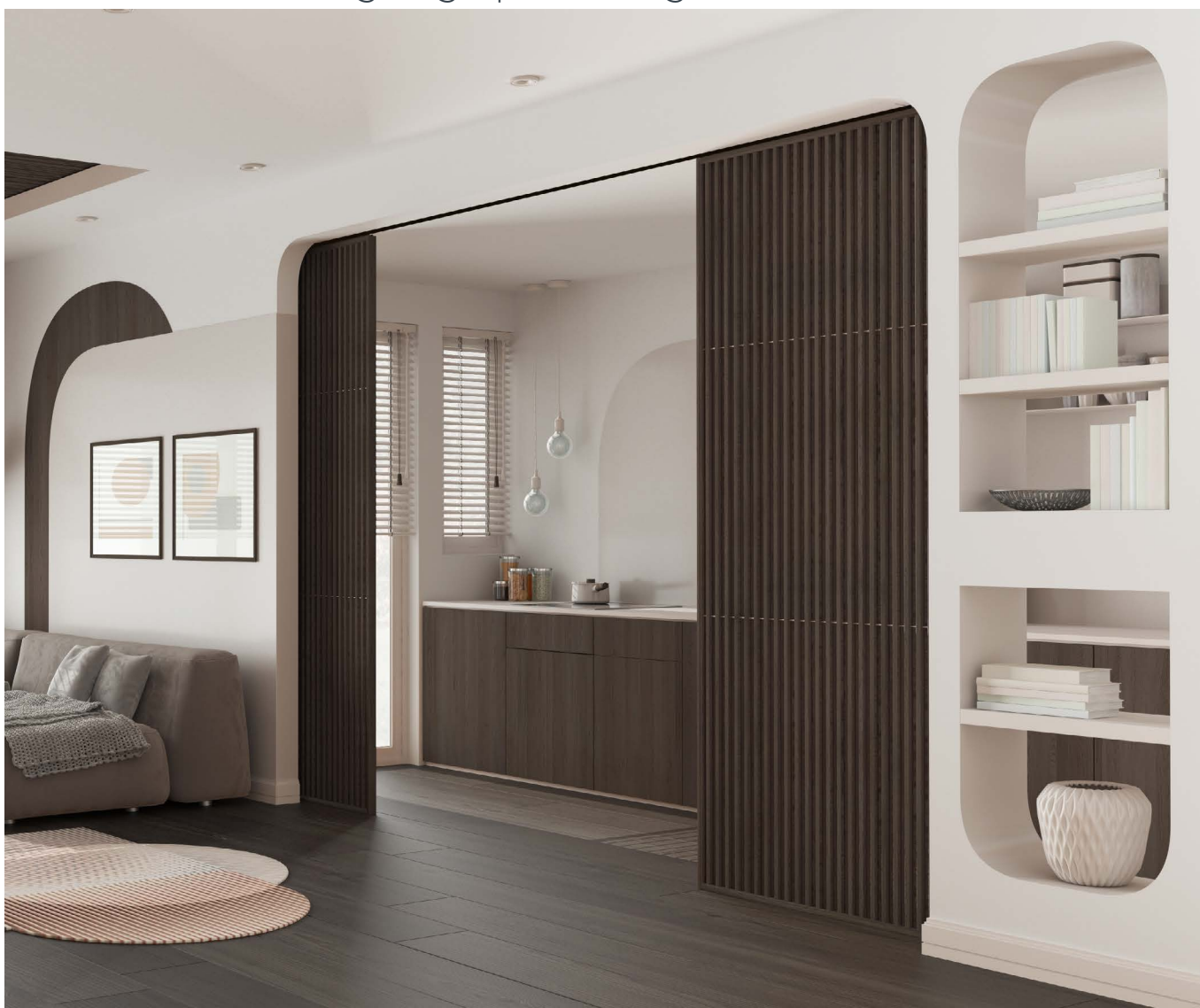


Husky 120 Pro

High performing, professional sliding door system for wooden or metal doors weighing up to 120kg



Husky 120 Pro is a high performing, professional level sliding system ideally suited to sliding wardrobes, passage doors and room dividers. Catering for wooden and metal doors weighing up to 120kg, the system has been designed to offer an exceptionally smooth operation which also boasts easy installation and low initial friction.

Husky 120 Pro is available in kit pack format and can be face fixed or soffit fixed to suit your application. For bi-parting door applications, a fittings kit can be purchased. Alternatively, Husky 120 Pro can also be specified as individual components.

To further enhance our Husky 120 Pro system, view our accessories on pages 32 to 33.

Kit Pack Specification

Product Code	Track Length	Max. Door Width	Door Thickness Range	Max. Door Weight
HP120/15A	1500mm	800mm	20 – 45mm	120kg
HP120/18A	1800mm	950mm	20 – 45mm	120kg
HP120/20A	2000mm	1050mm	20 – 45mm	120kg
HP120/25A	2500mm	1250mm	20 – 45mm	120kg
HP120/30A	3000mm	1500mm	20 – 45mm	120kg

Kit Contents

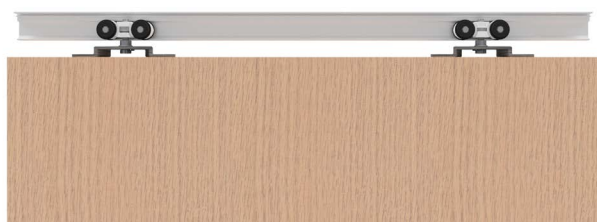
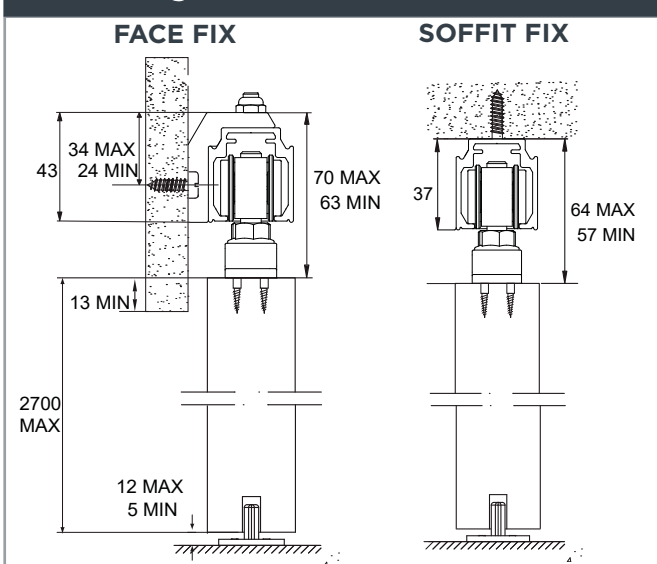
Component	Quantity	Product Code
Track - 1500, 1800, 2000, 2500 & 3000mm	1	280HP/**AN
Hangers	2	284HP
Wall Brackets	Varies	281HP
End Caps	2	280EC
Clip Stop	2	601HP
Guide	1	102N

**Replace with length of track for full product code (For example, 1500mm = 15, 1800mm = 18)

Optional Accessories

Component	Description	Product Code
Fittings Kit	1 Door Fittings Kit	HP120
Fascia	SnapFit face fixed fascia - 1800, 2000, 3000, 4000 and 6000mm	SFF/FF/**A
	SnapFit soffit fixed fascia - 1800, 2000, 3000, 4000 and 6000mm	SFF/SF/**A
Hanger	Hanger for metal doors	285HP

Product Diagrams



Product Information - use the below tables when specifying parts individually

Product	Max. Door Width	Door Thickness Range	Max. Door Weight
Husky 120 Pro	3000mm	20 – 45mm	120kg

Product Specification

Component	Description	Product Code
Track	Anodised aluminium track - 1500, 1800, 2000, 2500, 3000, 4000 and 6000mm	280HP/**AN
End Caps	Track end caps	280EC
Hangers	Hanger for wooden doors	284HP
	Hanger for metal doors	285HP
Wall Brackets	For face fixed applications	281HP
Clip Stop	Clip stop	601HP
Guide	Nylon floor guide	102N
	Concealed fixing guide for wood or metal doors	106N/94
Guide Channel	Aluminium guide channel - 1500, 2000, 2500, 3000, 4000 and 6000mm	94X/**A
Fascia	SnapFit face fixed fascia - 1800, 2000, 3000, 4000 and 6000mm	SFF/FF/**A
	SnapFit soffit fixed fascia - 1800, 2000, 3000, 4000 and 6000mm	SFF/SF/**A

**Replace with length of track for full product code (For example, 1500mm = 15, 1800mm = 18)

SLIDING

Husky 120 Pro Accessories

Husky 120 Pro Soft Close



Suitable for wooden and metal sliding doors weighing up to 120kg, our new Dual Soft Close prevents unwanted slamming by gently decelerating the door and pulling it into its stationary position, increasing the overall longevity of the product.

The soft close is extremely easy to install. Once installed, the soft close is concealed within the track for a discreet finish.

Please note: Husky 120 Pro kit must be purchased in addition to the Soft Close.

Product Code	Door Width Range	Door Weight Range
SOFTHP/60	600 - 950mm	10 - 60kg
SOFTHP/120	600 - 950mm	60 - 120kg
SOFTHP/WD	950 - 2500mm	20 - 120kg

Husky 120 Pro Simultaneous Action



Catering for wooden doors weighing up to 120kg, our Simultaneous Action kit allows for the synchronised opening of bi-parting doors. Open or close one door and the other will move simultaneously.

Please note: Husky 120 Pro kit must be purchased in addition to the Simultaneous Action kit.

Product Code	Door Thickness Range	Max. Door Width	Door Weight Range
SIMHP120	25 - 50mm	1250mm	25 - 120kg

Compact 120



The Compact 120 Low Headroom kit has been designed with discreet and concealed components which are routed into the top of the door - reducing the clearance between the track and top of the door to 2mm.

Catering for wooden doors weighing up to 120kg, Compact 120 is suitable for applications with restricted headroom or seeking a minimalistic finish or floor to ceiling sliding doors.

Please note: Husky 120 Pro Kit must be purchased in addition to the Compact 120.

Product Code	Min. Door Thickness	Max. Door Weight
CP120	35mm	120kg

Husky 120 Pro Accessories

Husky 120 Pro Glass Patch Kit



The Husky 120 Pro Glass Patch kit allows Husky 120 Pro to be used with 10mm or 12mm glass panels weighing up to 100kg. The kit has been designed with patches which fix to the glass and requires the glass panel to be machined prior to installation.

Designed with aesthetics and functionality at the forefront, Husky 120 Pro Glass Patches are easy to install.

Please note: Husky 120 Pro kit and must be purchased in addition to the kit.

Component	Product Code	Glass Thickness	Door Weight Range
Husky 120 Glass Patch kit	GP100	10mm or 12mm	25 - 100kg

Husky 120 Pro Glass Clamp Kit



Husky 120 Pro Glass Clamps offers a sliding solution for lightweight glass panels weighing up to 75kg. The system has been designed with glass clamps which mount the glass and therefore does not require any machining.

The clamps are available in various options to cater for glass panels which are 8mm, 10mm or 12mm thick.

Please note: Husky 120 Pro kit and must be purchased in addition to the kit.

Component	Product Code	Max Panel Width	Glass Thickness	Max. Panel Weight
Husky Glass Clamp Kit	8/HY/75	1250mm	8mm	75kg
	10/HY/75		10mm	
	12/HY/75		12mm	