

Interactive Booklet!

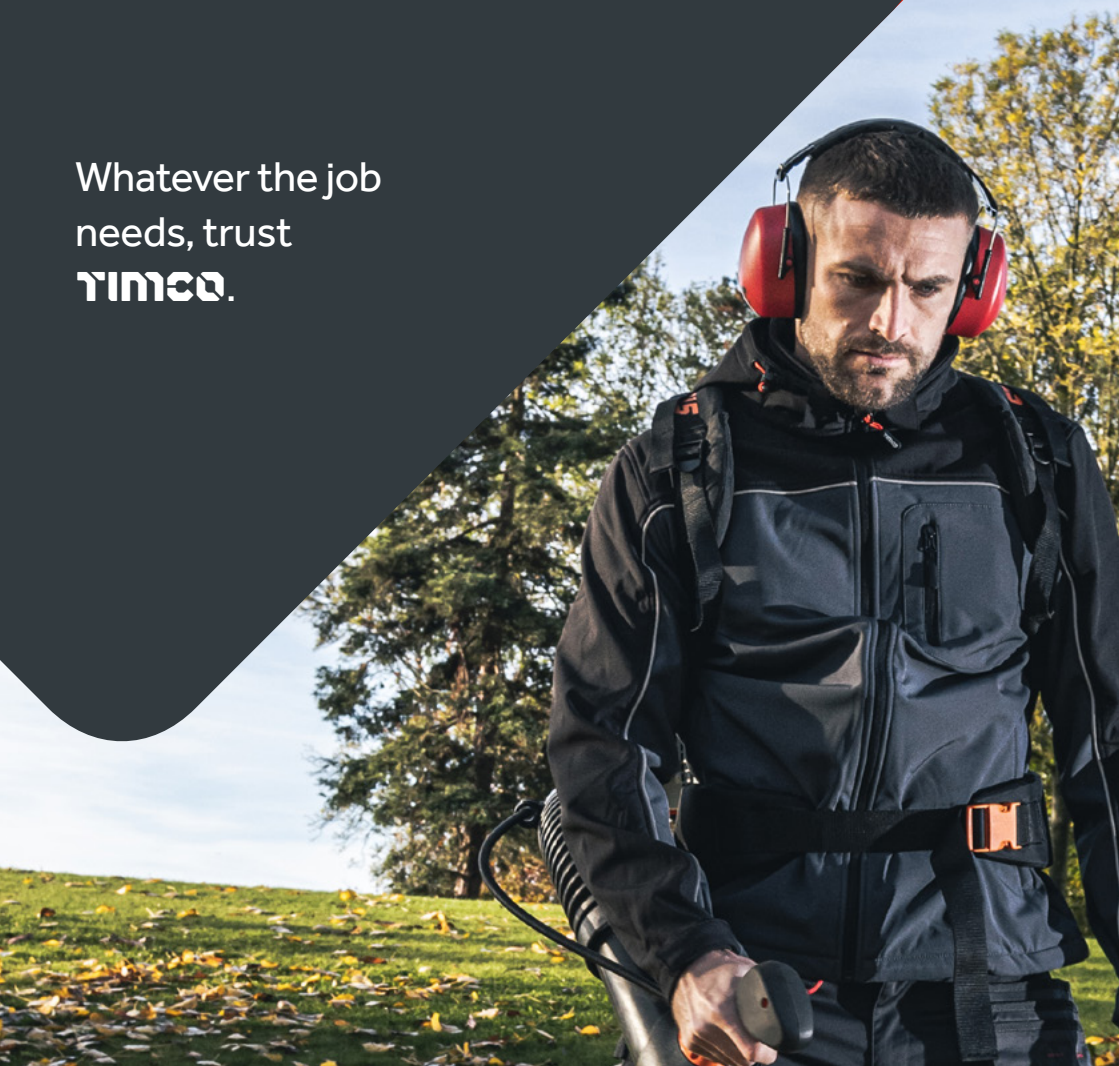
Clickable product pages

timco

Made for the trade

Workwear

Whatever the job
needs, trust
timco.



Trousers & Shorts 4-11

Craftman Trousers	4 - 5
Workman Trousers	6 - 7
Workman Shorts	8 - 9
Yardsman Trousers	10 - 11

T-shirts 12-15

Short Sleeve Trade T-shirt Pack	12 - 13
Long Sleeve Trade T-shirt Pack	14 - 15

Fleece & Hoodie 16-19

Half Zip Overhead Fleece	16 - 17
Hoodie	18 - 19

Waterproof Clothing 20-25

Rain Jacket & Trousers	20 - 21
Waterproof Lined Rain Jacket	22 - 23
Waterproof Trousers	24 - 25

Jackets & Bodywarmers 26-29

Softshell Jacket	26 - 27
Padded Bodywarmer	28 - 29

Accessories 30-33

Work Belt	30
Trade Socks	31
Pro Beanie	32
Fleece Neck Warmer	33

Hi-Vis 34-43

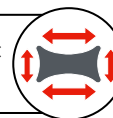
Vests	34
Executive Vests	35
Sweatshirt with Hood	36
Polo Shirts	37
Fleece Jacket	38
Softshell Jacket	39
Bomber Jacket	40
Parka Jacket	41
Executive Trousers	42
Elasticated Waist Trousers	43



Craftsman Trousers

Premium work trousers, made using heavy duty breathable fabric for increased comfort with Cordura-reinforced knees for added durability.

4-Way Stretch Fabric
for comfort & movement



- Breathable fabric
- Polyester & cotton blend
- Triple-stitched critical seam
- D ring for personal items
- Adjustable hammer strap
- Reflective rear strips
- 7x belt loops
- Heavy duty YKK front zip fly
- 9 x pockets:
1 x open back, 1 x closed back,
2 x holster, 1 x cargo, 2 x front
& 2 x extra large stationery

CORDURA

Extra tough cordura-reinforced top entry knee pad pockets and hems for superior durability and extreme protection scuffs, tears and abrasions.



Dark Grey

Knee pad inserts available, sold separately -
Product Code: 770301

Cordura-reinforced



Tapered style
for the best look & fit



Reinforced seams



Product Code

Size

CTGBK3032
CTGBK3232
CTGBK3432

W30 L32
W32 L32
W34 L32

Product Code

Size

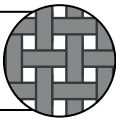
CTGBK3632
CTGBK3832
CTGBK4032

W36 L32
W38 L32
W40 L32

Workman Trousers

Multi-purpose work trousers, made using breathable and reinforced fabric for extra comfort and durability.

Open Weave Fabric
for enhanced breathability



- Polyester & cotton blend
- Tapered style for the best look & fit
- Heavy duty & dust proof
- Top entry knee pad pockets
- Hammer strap
- 8 x pockets:
1 x open back, 1 x closed back,
2 x holster, 1 x cargo,
2 x front & 1 x ruler

Reinforced
Reinforced knee pad pockets, holster pockets, belt loops and hems for improved durability and protection scuffs, tears and abrasions.



Dark Grey

Knee pad inserts available, sold separately -
Product Code: 770301



Product Code	Size
WTGBK3030	W30 L30
WTGBK3032	W30 L32
WTGBK3230	W32 L30
WTGBK3232	W32 L32
WTGBK3234	W32 L34
WTGBK3430	W34 L30
WTGBK3432	W34 L32

Product Code	Size
WTGBK3434	W34 L34
WTGBK3630	W36 L30
WTGBK3632	W36 L32
WTGBK3634	W36 L34
WTGBK3830	W38 L30
WTGBK3832	W38 L32

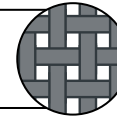




Workman Shorts

Multi-purpose work shorts, made using breathable and reinforced fabric for extra comfort and durability.

Open Weave Fabric
for enhanced breathability



- Breathable fabric
- Polyester & cotton blend
- Robust double stitched seams
- Hammer strap
- Heavy duty YKK zip fly
- 8 x pockets: 1 x open back, 1 x closed back, 2 x holster, 2 x front, 1 x zipped cargo & 1 x ruler

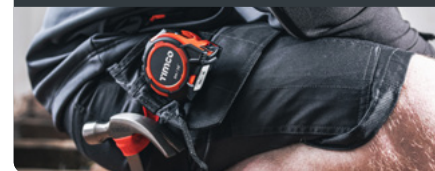
Reinforced

Reinforced holster pockets and belt loops for improved durability and protection scuffs, tears and abrasions.

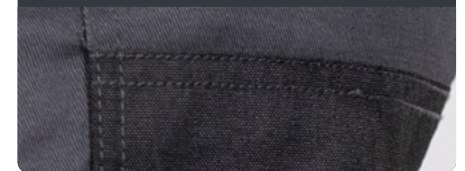


Dark Grey

Wear & tear resistant



Robust double stitched seams



Product Code	Size
WSGBK30	W30
WSGBK32	W32
WSGBK34	W34

Product Code	Size
WSGBK36	W36
WSGBK38	W38
WSGBK40	W40

Yardsman Trousers

General purpose trousers made using lightweight and sturdy fabric.

Flexible Polycotton
for all day comfort

- Hard-wearing fabric
- Polyester & cotton blend
- Regular fitting for a variety of jobs
- Single-stitched seams
- 5x belt loops
- Front zip fly
- 8 x pockets:
2 x open back, 2 x zipped front,
2 x open front, 1 x coin & 1 x cargo



Jet Black

Knee pad inserts available, sold separately -
Product Code: 770301



Product Code	Size
YTBK3032	W30 L32
YTBK3232	W32 L32
YTBK3432	W34 L32

Product Code	Size
YTBK3632	W36 L32
YTBK3832	W38 L32
YTBK4032	W40 L32





Short Sleeve Trade T-Shirt

Pack of 3

Lightweight short sleeved t-shirt for a variety of work types. Made from breathable fabric for added comfort and seasonal layering.

**Hypoallergenic
Lightweight Fabric**



- 100% breathable cotton
- Classic fit
- Excellent colour retention
- Easily layered up in cooler seasons



Red



Green

Grey Marl

Ultra soft material



Quick drying



Product Code	Size
TTMIXM (Red, Green & Grey Marl)	M (Chest: 42")
TTMIXL (Red, Green & Grey Marl)	L (Chest: 46")
TTMIXXL (Red, Green & Grey Marl)	XL (Chest: 50")

Long Sleeve Trade T-Shirt

Pack of 3

Lightweight long sleeve t-shirt for a variety of work types.
Made from breathable fabric for added comfort.

Hypoallergenic
Lightweight Fabric

- 100% breathable cotton
- Classic fit
- Excellent colour retention
- Easily layered up in cooler seasons



Grey Marl



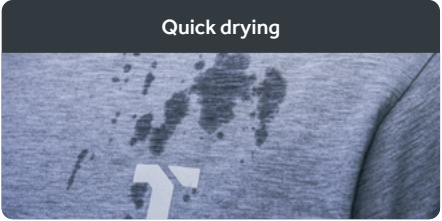
Red



Green



Ultra-soft material



Quick drying

Product Code	Size
LSTTMIXM (Red, Green & Grey Marl)	M (Chest: 42")
LSTTMIXL (Red, Green & Grey Marl)	L (Chest: 46")
LSTTMIXXL (Red, Green & Grey Marl)	XL (Chest: 50")





Half Zip Overhead Fleece

Lightweight and tough overhead fleece with half front zip. Made from premium grade microfleece fabric for added user comfort.

**Premium
Grade Microfleece**

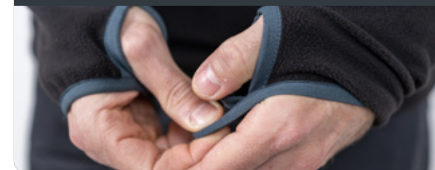


- Lightweight & breathable microfleece
- 100% polyester
- Bound hem
- Good colour retention
- Cold & draught protection
- Elasticated thumb hole cuffs
- Half-length front zip



Black

Elasticated cuffs with thumb holes



Insulation against cold



Product Code

Size

HZOFBM
HZOFBL
HZOFBXL

M (Chest: 42")
L (Chest: 44")
XL (Chest: 48")

Hoodie

A heavyweight hoodie with elasticated hem and cuffs for warmth and comfort. Ideal for everyday use in a variety of work environments.

Breathable & Warm
Fleece Lining



- Cotton & polyester blend
- Excellent colour retention
- Heavy duty & durable
- Elasticated hem & cuffs
- 1 x Kangaroo pocket



Green

Adjustable draw cord hood



Elasticated hem & cuffs for added warmth



Product Code	Size
HOODIEGM	M (Chest: 42")
HOODIEGL	L (Chest: 46")



Rain Jacket & Trousers

Lightweight and relaxed fit 2-piece waterproof rain suit, with easy pull-on design. Made to be waterproof, windproof and breathable for all weather protection and dry working comfort.

**100% Waterproof
& Breathable**



- Heavy duty nylon fabric to prevent cracking & splitting
- High stretch fabric for enhanced movement & comfort
- Lightweight
- Premium PU hydrophobic coating
- Maximum resistance to continuous wet weather exposure
- Easy to clean & stain resistant
- Zip-fastened jacket with elasticated cuffs
- Press stud ankle cuffs
- Elasticated waist
- Drawcord around the waist
- 4 x Pockets:
2 x front top & 2 x side leg

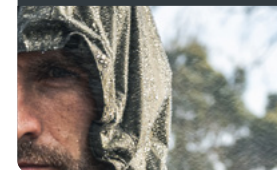


Olive

Heavy duty nylon



2K 2000mm



Drawcord hood



Product Code

Size

RJT801GM
RJT801GL
RJT801GXL

M (Chest: 48")
L (Chest: 50")
XL (Chest: 52")

Waterproof Lined Rain Jacket

A heavy duty and lightweight lined rain jacket and hood made from tough fabric for durable and long lasting waterproofing. With a concealed back vent for increased user comfort.

100% Waterproof



- Heavy duty
- 2-way adjustable drawcord hood
- Wind resistant adjustable cuffs
- Reflective strips
- Turned hem
- Front zip
- 2 x Lower pockets with nylon zips



Black & Blue

Lightweight lining



Adjustable cuffs



Concealed back vent



Product Code	Size
LRJ1001M	M (Chest: 48")
LRJ1001L	L (Chest: 50")
LRJ1001XL	XL (Chest: 52")





Waterproof Trousers

Heavy duty and lightweight waterproof trousers with elasticated waist for added user comfort.

100% Waterproof

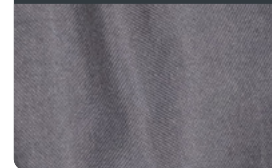


- Loose fit & durable fabric
- 100% Polyester
- Non-breathable
- Elasticated waist
- 2 x open side pockets



Grey

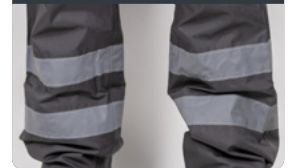
Heavy duty fabric



Press stud ankle cuffs



Reflective bands
for visibility



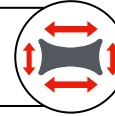
Product Code	Size
WT901M	M (Waist size: 30", Leg length: 32")
WT901L	L (Waist size: 32", Leg length: 32")
WT901XL	XL (Waist size: 34", Leg length: 32")



Softshell Jacket

A premium softshell jacket, giving the user protection from water, wind and cold weather. Lined with a breathable and lightweight microfleece fabric.

4 Way Stretch Fabric
for comfort & movement



- Lightweight microfleece fabric
- 100% polyester wear resistant lining
- Wind proof & water repellent
- Breathable & hard wearing
- Adjustable drawcord hood
- Adjustable hook & loop cuffs
- Premium nylon zip
- 2 x Fleece-lined waist pockets

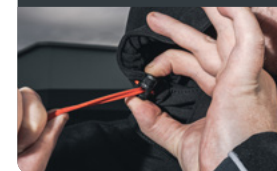


Black & Charcoal

Removable hood



Drawcord hem



Reflective strips



Product Code	Size
SSJ1201M	M (Chest: 44")
SSJ1201L	L (Chest: 46")
SSJ1201XL	XL (Chest: 48")

Padded Bodywarmer

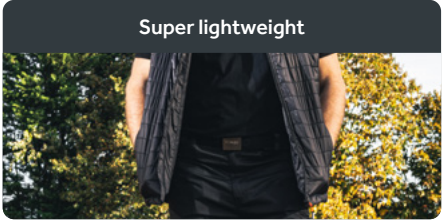
A premium padded bodywarmer with anti-pilling microfleece lining for superior user comfort and warmth.

4 Way Stretch Fabric
for comfort & movement

- Premium breathable fleece lining
- Hard wearing polyester fabric
- Good colour retention
- Fast drying
- Easy to clean
- Soft lined collar
- Front zip
- 3 x Pockets:
1 x zipped chest, 2 x zipped side



Black & Charcoal



Product Code	Size
PB1101M	M (Chest: 46")
PB1101L	L (Chest: 48")
PB1101XL	XL (Chest: 50")





Work Belt

Heavy duty belt made from a woven polyester fabric blend, with a quick-release and lock buckle. One size fits all.

Woven Polyester Strap

flexible for all day comfort



- Heavy duty, quick release iron buckle
- High strength
- Cut to length
- Suitable for all work trousers



Black

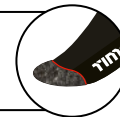
Product Code	Size
WBB2848	L-XL (Waist: 28-48")

Trade Socks

3 Pairs

Premium quality socks, designed with a padded sole to give the wearer optimal comfort. The reinforced heel and toe provide abrasion resistance. Suitable for a vast majority of trades as well as for everyday use.

Reinforced Heel & Toe



- Premium polywoven fabric for durability
- Shock absorption padded sole
- Fully elasticated for comfort
- Suitable for all footwear



Black

Product Code	Size
TSOCKL	UK 7 - 12



Pro Beanie

A soft knit fabric, one size fits all beanie hat designed to be soft, warm and very comfortable. With added Thinsulate® lining for the ultimate insulation and user comfort.

Microfleece Thinsulate Inner Lining



- Soft & warm acrylic
- One size stretch fabric
- Insulated inner layer
- Elasticated fit for comfort
- Deep cuff
- Quick drying



Grey

Product Code	Size
BEANIE	One Size

Fleece Neck Warmer

A double layered, one size fits all neck warmer, designed to give the wearer a super soft and warm feel whilst not inhibiting movement. Featuring insulated and wind resistant fabric for enhanced performance and comfort.

Microfleece Thinsulate Inner Lining



- Super soft material
- Lightweight & wind resistant
- Insulated inner layer
- Elasticated fit for comfort
- Quick drying



Grey

Product Code	Size
NWGREY	One Size



Vest



High visibility yellow waistcoat with highly reflective panels to body and shoulders for visibility, particularly during the hours of darkness.

- Hook & loop fastening
- 50mm reflective tape on body & shoulders
- 100% knitted polyester

CE Approved EN 20471
Class 1 & 2

Product Code	Size
HVVSML	Small
HVVMED	Medium
HVVLRG	Large
HVVXL	X Large
HVVXXL	XX Large
HVV3XL	XXX Large
HVV4XL	XXXX Large

Executive Vests



High visibility executive waistcoat with highly reflective panels to body and shoulders for visibility, particularly during the hours of darkness.

- Two front hook & loop fasten pockets & ID pocket
- 50mm reflective tape on body & shoulders
- Phone pocket, pen pocket & radio loop D ring
- Zipper fastening

CE Approved EN 20471
Class 1 & 2

Product Code		Size
HVEVSML	HVVYBSML	Small
HVEVMED	HVVYBMED	Medium
HVEVLRG	HVVYBLRG	Large
HVEVXL	HVVYBXL	X Large
HVEVXXL	HVVYBXXL	XX Large
HVEV3XL	HVVYB3XL	XXX Large
HVEV4XL	HVVYB4XL	XXXX Large



Sweatshirt with Hood



CE Approved EN 20471
Class 3

Ideal for colder outdoor and dry working environments. A high visibility yellow fleece sweatshirt with reflective bands for improved visibility, particularly during the hours of darkness.

- 50mm reflective tape on body & shoulders
- Ribbed waist & wrists
- Fleeced lined

Product Code	Size
HVSWEATSMML	Small
HVSWEATMED	Medium
HVSWEATLRG	Large
HVSWEATXL	X Large
HVSWEATXXL	XX Large
HVSWEAT3XL	XXX Large
HVSWEAT4XL	XXXX Large

Polo Shirts



CE Approved EN 20471
Class 2 & 3

Hardwearing and comfortable to wear, a high visibility yellow polo shirt with panels that reflect light to maximise visibility, particularly during the hours of darkness. Available in short or long sleeved to suit a variety of conditions.

- 50mm reflective tape on body & shoulders
- Breathable bire eye fabric
- Grey polo neck collar

Product Code		Size
Short Sleeve	Long Sleeve	
HVSSPSML	HVLSPSML	Small
HVSSPMED	HVLSPMED	Medium
HVSSPLRG	HVLSPLRG	Large
HVSSPXL	HVLSPXL	X Large
HVSSPXXL	HVLSPXXL	XX Large
HVSSP3XL	HVLSP3XL	XXX Large
HVSSP4XL	HVLSP4XL	XXXX Large



Fleece Jacket



CE Approved EN 20471
Class 3

Ideal for colder outdoor and dry working environments, this high visibility yellow polar fleece jacket incorporates reflective bands for improved visibility, particularly during the hours of darkness.

- 50mm reflective tape on body & shoulders
- Elasticated wrists

Product Code	Size
HVFJSML	Small
HVFJMED	Medium
HVFJLRG	Large
HVFJXL	X Large
HVFJXXL	XX Large
HVFJ3XL	XXX Large
HVFJ4XL	XXXX Large

Softshell Jacket



CE Approved EN 20471
Class 3

Grey and high visibility yellow softshell weatherproof jacket with reflective bands for improved visibility, particularly during the hours of darkness. Ideal for colder outdoor working environments.

- Waterproof
- 50mm reflective tape on body & shoulders
- Hook & loop adjustable wrists
- Fleece lined

Product Code	Size
HVSJSML	Small
HVSJMED	Medium
HVSJLRG	Large
HVSJXL	X Large
HVSJXXL	XX Large
HVSJ3XL	XXX Large
HVSJ4XL	XXXX Large



Bomber Jacket



CE Approved EN 20471
Class 3

Bomber jacket in high visibility yellow with reflective bands for improved visibility, particularly during the hours of darkness. Quilted lining and fleece lined collar for warmth and comfort.

- 50mm reflective tape on body & shoulders
- Waterproof hood with a fleece lined collar
- Two way zippers with hook & loop storm proof flap
- Hook & loop adjustable wrists
- Two front pockets, an inside pocket & a radio loop D ring

Product Code	Size
HVJSML	Small
HVJMED	Medium
HVJLRG	Large
HVJXL	X Large
HVJXXL	XX Large
HVJ3XL	XXX Large
HVJ4XL	XXXX Large

Parka Jacket



CE Approved EN 20471
Class 3

Parka jacket in high visibility yellow with reflective bands for improved visibility, particularly during the hours of darkness. Longer length with quilted lining and fleece lined collar for warmth and comfort.

- 50mm reflective tape on body & shoulders
- Waterproof hood with a fleece lined collar
- Two way zippers with hook & loop storm proof flap
- Hook & loop adjustable wrists
- Two front pockets, an inside pocket & a radio loop D ring

Product Code	Size
HVPJSML	Small
HVPJMED	Medium
HVPJLRG	Large
HVPJXL	X Large
HVPJXXL	XX Large
HVPJ3XL	XXX Large
HVPJ4XL	XXXX Large



Executive Trousers



High visibility yellow workwear trousers with reflective tape for extra visibility. Elasticated waist with zip fly. 35% cotton and 65% polyester woven fabric with two hip pockets and two additional utility thigh pockets.

- 50mm reflective tape round both legs
- Elasticated waistband with belt loops
- Two hip pockets & two thigh pockets
- Zip fly

CE Approved EN 20471
Class 1

Product Code	Size
HVTRSMED	Medium
HVTRSLRG	Large
HVTRSXL	X Large
HVTRSXXL	XX Large
HVTRS3XL	XXX Large

Elasticated Waist Trousers



High visibility yellow waterproof over trousers with reflective tape for extra visibility. 100% polyester.

- 50mm reflective tape on body & shoulders
- Waterproof
- Pocket slits to allow easy access to wearer's trouser pocket
- Elasticated waistband

CE Approved EN 20471 /
Class 1 EN 343:2019

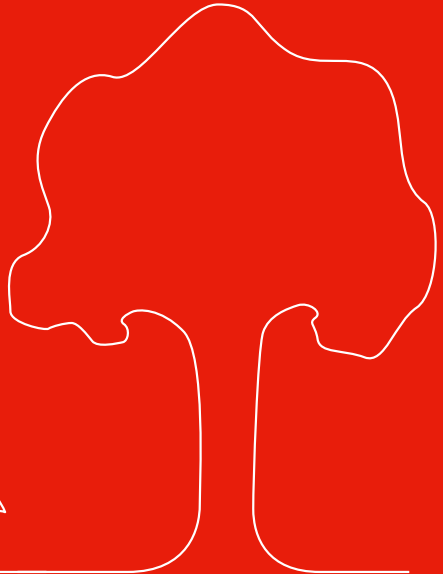
Product Code	Size
HVETRMED	Medium
HVETRSLRG	Large
HVETRSLRG	Large
HVETRSLRG	Large
HVETRSLRG	Large
HVETRSLRG	Large
HVETRSLRG	Large
HVETRSLRG	Large

Member of



Being a member of OPRL allows us to clearly mark the recyclability of our packaging. This allows consumers to identify and correctly recycle our packaging and print.

For example this brochure has the recycle label below.



UK

TIMCO House,
Green Lane, Wardle,
Nantwich, CW5 6BJ
Fax: 01829 261102
Fax: 01829 261093

sales@timco.co.uk
UK: **01829 261111**

timco.co.uk

Ireland

Old Train Station,
North Road,
Monaghan, H18 YK54
Fax: 04763539

sales@timco.ie
IRE: **04763538**
NI: **02890992305**

timco.ie