

**Interactive Booklet!**

Clickable product pages

**timco**

Made for the trade

# Gate & Fence Hardware

Whatever the job  
needs, trust  
**timco.**





## **Gate Hardware** **4-17**

Locks & Handles	4-5
Latches, Catches, Hooks & Springs	6-8
Gate Kits	9
Tower Bolts & Padbolts	10-11
Hasps & Staples	12-13
Door & Garage Bolts	14-17
Garage Door Holders	17

## **Field Gate Hardware** **18-31**

Chains & Accessories	18-21
Exterior Gate & Door Hinges	22-25
Field Gate Hinge Sets	26-27
Field Gate Hooks & Eyes	28
Throw-Over Loops	30-31

## **Fence Hardware** **32-39**

Fence Post Supports	32-35
Fencing Accessories	36-39

## **Product Codes** **40-45**





## Locks & Handles

EBL

Epoxy  
Black

PC

Polished  
Chrome

### Long Throw Locks - Single & Double

An ideal high security lock for gates. The lock features a cylinder barrel of either 50 or 70mm in length, suitable for either 50mm or 70mm gate thicknesses. Supplied with a brass escutcheon, or alternatively a rim lock escutcheon handle can be used (sold separately).

Double option requires a key to open from the inside and outside.

Single option requires a key to open from the outside but can be opened from the inside without the use of a key.

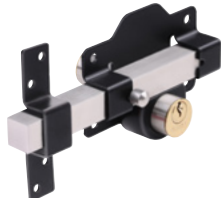


Single - Key access outside only

Double - Key access outside & inside



Available in Display Box (fixings & 3 keys incl.)  
50 & 70mm - EBL



### Escutcheon Handle

A high quality pull handle to suit the extended throw locks. The pull handle fits over the rim cylinder of the lock to provide a clean finish to the cylinder hole.



Available in Bag (excl. fixings)  
& TIMbag (fixings incl.)  
26mm - PC EBL

### Rim Locks



#### Rim Dead Lock - 106 x 74mm

An ideal medium security lock for shed and internal doors. It is reversible for both left and right hand hung doors and is key operational from both sides.

Supplied with 2 keys.



#### Rim Sash Lock Fluted - 156 x 106mm

An ideal medium security lock for sheds and internal doors. It is reversible for both left and right hand hung doors and is key operated from both sides.

Supplied with 2 keys.



Reverse Plate

#### Rim Sash Locks - 143 x 83mm

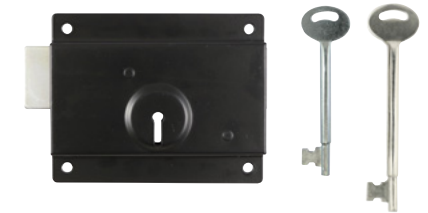
An ideal medium security lock for shed and internal doors. It is reversible for both left and right hand hung doors and is key operational from both sides. Use with rim knob sets to operate the latch.

Supplied with keep for both inward and outward opening doors and 2 keys.

Available in Bag (excl. fixings)  
& TIMbag (fixings incl.) - EBL

### Press Lock

A low security lock commonly fitted to shed and green house doors which is surface mounted for quick and easy installation. The lock bolt engages on or into the door frame and does not require a keep.



Supplied with 1 standard length key. Additional keys are available as 1 key fits all locks. 76mm also available with extra long keys (2 supplied).

Available in Bag (excl. fixings)

76, 100 & 125mm - EBL

Available in TIMbag (fixings incl.)

76 & 100mm - EBL

### Plastic Rim / Mortice Knob Set

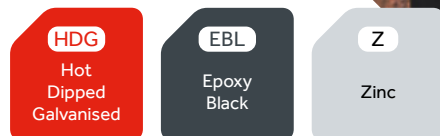
Ideal for use on shed doors and gates. Can be used with rim or mortice locks.

Supplied with two escutcheon plates to cover keyhole cut outs.



Available in Bag (excl. fixings)  
& TIMbag (fixings incl.) - EBL

## Latches, Catches, Hooks & Springs



### Ring Gate Latch

For use on light domestic gates. External handle allows the gate to be opened from the outside.



**Available in Bag** (excl. fixings) & **TIMbag** (fixings incl.)  
150mm - **HDG** **EBL** **Z**

### Twisted Ring Gate Latch

For use on light domestic gates. External handle allows the gate to be opened from the outside. The twisted pattern ring handle adds a decorative feature.



**Available in Bag** (excl. fixings) & **TIMbag** (fixings incl.)  
150mm - **HDG** **EBL**

## Suffolk Latches

### Medium Suffolk Latch - Short Thumb Bit 205 x 45mm

For use on light domestic gates. External handle allows gate to be opened from the outside.



**Available in Bag** (excl. fixings) & **TIMbag** (fixings incl.)  
205 x 45mm - **HDG** **EBL** **Z**

### Heavy Suffolk Latch - Long Thumb Bit 219 x 50mm

For use on heavy domestic gates. External handle allows the gate to be opened from the outside.



**Available in Bag** (excl. fixings)  
219 x 50mm - **HDG** **EBL**

## Automatic Gate Catches

### Automatic Gate Catch 50mm

Automatically latches when the gate is shut and are pad-lockable for added security. Ideal for use in light domestic applications.



**Available in Bag** (excl. fixings) & **TIMbag** (fixings incl.)  
50mm - **HDG** **EBL** **Z**

### Heavy Automatic Gate Catch 50mm

Automatically latches when the gate is shut and are pad-lockable for added security. Ideal for use in heavy domestic, commercial and agricultural applications.



**Available in Bag** (excl. fixings) & **TIMbag** (fixings incl.)  
50mm - **HDG**

## Hot Bed Handle

A durable and hard wearing handle for gates and shed doors.



**Available in Bag** (excl. fixings) & **TIMbag** (fixings incl.)  
150 & 175mm - **EBL**

## Turn Button Cast Iron

Turn buttons are used for holding flush fitting doors and gates closed.

Use a 4.0 x 30mm screw to attach to door/gate.



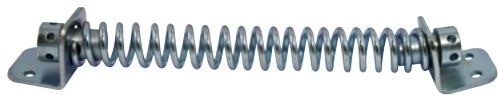
**Available in Bag** (excl. fixings):  
50mm - **HDG** **EBL**  
52mm - **Z**  
67mm - **Z**

**Available in TIMbag** (fixings incl.)  
50mm - **HDG** **EBL**



## Gate Spring

Gate springs provide automatic closure for single action gates. The spring tension is adjustable for increasing or decreasing the gate closing force.



**Available in Bag** (excl. fixings)  
& **TIMbag** (fixings incl.)

200 & 250mm - **EBL** **Z**

## Cabin Hook Cast Iron

Ideal for retaining doors and gates in an open position in heavy domestic and agricultural applications. Made from cast iron for added strength and durability.



**Available in Bag** (excl. fixings)

75, 100, 150, 200, 250 & 300mm - **HDG** **EBL**

**Available in TIMbag** (fixings incl.)

75, 100, 150, 200 & 250mm - **HDG** **EBL**

## Cabin Hook Wire Pattern

Ideal for retaining doors and gates in an open position in light domestic applications.



**Available in Bag** (excl. fixings)

100, 150, 200, 250 & 300mm - **EBL** **Z**

**Available in TIMbag** (fixings incl.)

100, 150 & 200mm - **EBL** **Z**

## Gate Kits

**HDG**

Hot  
Dipped  
Galvanised

**EBL**

Epoxy  
Black

**Z**

Zinc

## Pedestrian Gate Kit

A complete gate kit for medium weight gates in domestic applications. Automatic gate latch is pad-lockable for additional security.

**Available in TIMbag** (fixings incl.)

To suit gate widths: 700 - 1050mm - **HDG** **EBL** **Z**



## Side Gate Kit - Ring Latch

A complete gate kit for medium weight gates in domestic applications. Brenton padbolt is pad-lockable and bolt fixed for additional security.



**Available in TIMbag** (fixings incl.)

To suit gate widths: 900 - 1350mm - **HDG** **EBL** **Z**

## Side Gate Kit - Suffolk Latch

A complete gate kit for medium weight gates in domestic applications. Brenton padbolt is pad-lockable and bolt fixed for additional security.



**Available in TIMbag** (fixings incl.)

To suit gate widths: 900 - 1350mm - **HDG** **EBL** **Z**

## Tower Bolts & Padbolts



HDG

Hot  
Dipped  
Galvanised

EBL

Epoxy  
Black

Z

Zinc

### Necked Tower Bolt

Necked tower bolts are used for securing recessed fitting gates and shed doors in a closed position.

**Available in Bag (excl. fixings) & TIMbag (fixings incl.)**  
100, 150 & 200mm - **HDG** **EBL**



### Straight Tower Bolt

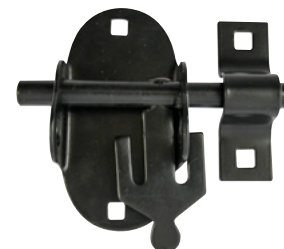
Straight tower bolts are used for securing flush fitting gates and shed doors in a closed position.

**Available in Bag (excl. fixings) & TIMbag (fixings incl.)**  
75, 100, 150, 200 & 250mm - **HDG** **EBL** **Z**



### Oval Padbolt

Oval padbolts are ideal for securing flush fitting narrow stile gates and doors in domestic and light commercial applications. They are pad-lockable and fixed with carriage bolts for added security.



**Available in Bag (excl. fixings) & TIMbag (fixings incl.)**  
100mm - **HDG** **EBL** **Z**

### Slide Action Padbolt

Slide action padbolts are ideal for securing flush fitting gates and doors in domestic and light commercial applications when the bolt is exposed externally. They are pad-lockable and fixed with eight carriage bolts to prevent the bolt being wrenched from the door.



**Available in Bag (excl. fixings) & TIMbag (fixings incl.)**  
185mm - **EBL** **Z**

### Brenton Padbolt

Brenton padbolts are used for securing flush mounted gates and shed doors in domestic and light commercial applications. They are pad-lockable and fixed with carriage bolts for added security.



**Brenton Padbolt available in Bag (excl. fixings) & TIMbag (fixings incl.)**  
100, 150 & 200mm - **HDG** **EBL** **Z**

**Brenton Padbolt - Elongated Keep available in Bag (excl. fixings)**  
102mm - **Z**



### Heavy Brenton Padbolt

Heavy brenton padbolts are used for securing flush mounted gates and shed doors in heavy domestic, commercial and agricultural applications. They are pad-lockable and fixed with carriage bolts for added security.



**Available in Bag (excl. fixings) & TIMbag (fixings incl.)**  
150, 200, 250, 300mm - **HDG**



## Hasps & Staples



HDG

Hot  
Dipped  
Galvanised

EBL

Epoxy  
Black

Z

Zinc

## Wire Pattern Hasp & Staple

A low security lightweight hasp and staple for sheds and toolboxes in light domestic applications.



**Available in Bag** (excl. fixings)  
75, 100 & 150mm - **EBL** **Z**

**Available in TIMbag** (fixings incl.)  
100 & 150mm - **EBL** **Z**

## Hinged Hasp & Staple

Hinged flexible hasp and staple for use around corners, angles and uneven surfaces where doors do not sit flush with frames.

Single



Double



**Available in Blister Pack** (fixings incl.)  
160mm (single) - **Z**  
200mm (double) - **Z**

## Hybrid Hasp & Staple

Hybrid Hasp & Staple for uneven surfaces to be used with a padlock. For internal & external use.



**Available in Bag** (excl. fixings)  
125mm - **Z**

## Heavy Secure Bolt on Hasp & Staple

A high security, heavy duty hasp and staple for sheds, gates and doors in heavy domestic, commercial and agricultural applications.



**Available in Bag** (excl. fixings) & **TIMbag** (fixings incl.)  
200 & 250mm - **EBL** **HDG**

## Heavy Swivel Pattern Hasp & Staple

A high security, heavy duty hasp and staple for sheds, gates and doors in heavy domestic, commercial and agricultural applications.



**Available in Bag** (excl. fixings) & **TIMbag** (fixings incl.)  
200mm - **EBL** **HDG**

## Safety Pattern Hasp & Staple

A low security hasp and staple for light domestic gates and shed doors.



**Available in Bag** (excl. fixings) & **TIMbag** (fixings incl.)  
75, 115 & 150mm - **EBL** **Z**

## Heavy Vertical Bolt on Hasp & Staple

A high security, heavy duty hasp and staple for sheds, gates and doors in heavy domestic, commercial and agricultural applications. The vertical pattern fixing plate makes this ideal for fitting to a narrow stile door or frame.



**Available in Bag** (excl. fixings) & **TIMbag** (fixings incl.)  
150mm - **EBL** **HDG**

## Heavy Padlock Protection Bar

A high security, heavy duty hasp and staple for sheds, gates and doors in heavy domestic, commercial and agricultural applications. The hasp features a strong cast iron housing to cover and protect the padlock from hammer and cutter attack.

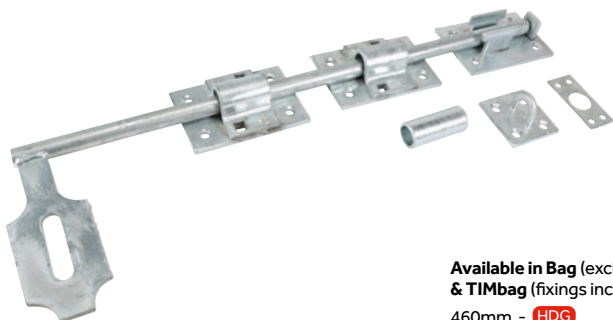


**Available in Bag** (excl. fixings) & **TIMbag** (fixings incl.)  
185mm (left or right) - **HDG**

## Door Bolts, Garage Bolts & Garage Door Holders

### Heavy Locking Drop Down Bolt

Ideal for securing the bottom of gates and doors in commercial and industrial applications. The bolts are pad-lockable and fixed with carriage bolts for added security. Extended bolt length for ease of operation and an adjustable bolt throw by moving the keep position.



**Available in Bag** (excl. fixings)  
& **TIMbag** (fixings incl.)  
460mm - **HDG**

### Cane Bolt

Ideal for lightweight gates, garages and shed doors in light domestic applications. Supplied with socket bolt keep.

**Available in Bag** (excl. fixings)  
& **TIMbag** (fixings incl.)  
300mm - **EBL**



### Garage Drop Down Bolt

Ideal for securing the bottom of gates and doors in domestic and industrial applications. Extended bolt length for ease of operation and an adjustable bolt throw by moving the keep position.

**Available in Bag** (excl. fixings)  
& **TIMbag** (fixings incl.)  
300 & 450mm - **HDG** **EBL**



### Heavy Cross Pattern Door Bolt

Heavy cross pattern bolts are typically used for securing large garage doors and gates in industrial and agricultural applications. They are extremely strong, pad-lockable and fixed with carriage bolts for high security.

**Available in Bag** (excl. fixings)  
300, 450 & 600mm - **HDG**



**HDG** - Hot Dipped Galvanised

**EBL** - Epoxy Black

**Z** - Zinc



## Monkey Tail Bolt

Monkey tail bolts are ideal for securing the top and/or bottom of gates and doors. They feature an extended length handle for ease of operation and remain closed under tension. Supplied with a flat plate keep and staple keep for fitting in either flush frame mounting, recess frame mounting or floor mounting applications.

**Available in Bag (excl. fixings) & TIMbag (fixings incl.)**

300 & 450mm - **HDG** **EBL**



## Bow Handle Bolt

Bow handle bolts are ideal for securing the top and/or bottom of gates and doors. They feature an extended length bow shaped handle for ease of operation and remain closed under tension.

**Available in Bag (excl. fixings) & TIMbag (fixings incl.)**

300 & 450mm - **HDG** **EBL**

## Foot Bolt



Garage foot bolts are used for securing the bottom of garage doors and gates. They are foot operated making them ideal for environments where a hands free operation is needed.

**Available in Bag (excl. fixings) & TIMbag (fixings incl.)**

200mm - **EBL** **Z**

## Spring Chain Bolt

Spring garage chain bolts are ideal for securing the top of garage doors or gates. The bolt remains closed under spring tension and features a 450mm long pull chain for easy operation to release the bolt.



**Available in Bag (excl. fixings) & TIMbag (fixings incl.)**

450mm - **EBL** **Z**

## Spring Loaded Animal Bolt

Ideal for securing flush mounted stable doors and gates in a close position. They are spring loaded to prevent animals working the bolt loose and escaping. Our animal bolts come supplied with a staple keep.



**Available in Bag (excl. fixings)**

143, 225 & 242mm - **HDG**

**Available in TIMbag (fixings incl.)**

143 & 225mm - **HDG**

## Garage Door Holders

- Mounts to the underside of the lintel and requires minimum lintel width of 60mm
- Junior garage door holder is for doors below 900mm wide
- Senior garage door holders are for doors over 900mm wide

### Junior & Senior Garage Door Holder Wide Lintel

For holding garage and barn doors in an open position. Angle of opening can be varied by adjusting the distance of the lintel bracket from the hinge edge. Automatically engages when the door is opened and released by pulling the cord.

Ideal for applications where the door cannot be propped open or hands free operation is needed.

**Available in Bag (excl. fixings):**

Junior - 375mm / Senior - 635mm - **EBL**

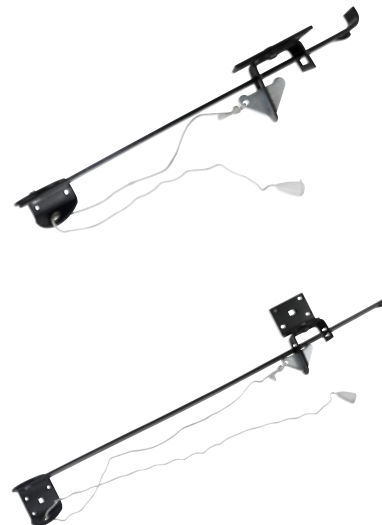
### Senior Garage Door Holder Narrow Lintel

For holding garage and barn doors in an open position. Angle of opening can be varied by adjusting the distance of the lintel bracket from the hinge edge. Automatically engages when the door is opened and released by pulling the cord.

Ideal for applications where the door cannot be propped open or hands free operation is needed.

**Available in Bag (excl. fixings)**

635mm - **EBL**



## Chains & Accessories



## Single Link Jack Chain

Ideal for the hanging of light fittings, pictures, mirrors, signs and hanging flower baskets. Zinc plated for improved resistance to corrosion.



Available in Box  
10m - Z

## Wire Ropes

Wire rope with 7x7 construction and zinc plating for corrosion resistance. Good degree of flexibility and ideal for stay wires, fencing, hanging signs, garage doors and catenary wire.



Available in Box  
10, 20, 30m - Z

## Wire Rope Grips

Wire rope grips used for the formation of an eye or loop at the end of a wire rope. Zinc plated for improved resistance to corrosion.



Available in Box  
To Suit Rope Size: 3mm - Z

## Wire Rope Thimbles

Wire rope thimbles are used to protect the eyes of cable and rope slings from abrasion by providing a solid steel barrier between the cable strands and other rigging fittings used in the connection. Zinc plated for improved resistance to corrosion.



Available in Box  
To Suit Rope Size: 4mm - Z

## Welded Link Chain

Welded link chain is ideal for securing farm gates and machinery among a variety of other uses. Not suitable for overhead lifting, load binding or towing.

Available in Clip:  
10.0m - HDG Z  
3.0m - HDG  
2.0m - HDG  
1.5m - HDG







## Quick Repair Link



Ideal for connecting lengths of chain or repairing broken chain links.

**Available in Bag & TIMbag**  
5, 6, 8mm - **Z**

## Carbine Hook



Spring loaded hook ideal for connecting lengths of chain or attaching to anchor points.

**Available in Bag & TIMbag**  
5, 6, 8mm - **Z**

## Ring on Plate



Ideal as an anchor point using chain, rope or wire.

**Available in Bag (excl. fixings) & TIMbag (fixings incl.)**  
50 x 50mm - **HDG**

## Dee Shackle



Ideal for connecting lengths of chain or fixing to anchor points.

**Available in Bag & TIMbag**  
5, 6, 8mm - **HDG**

## Bow Shackle



Ideal for connecting lengths of chain or fixing to anchor points.

**Available in Bag & TIMbag**  
5, 6, 8mm - **HDG**

## Hook on Plate



Ideal as an anchor point using chain, rope or wire.

**Available in Bag (excl. fixings) & TIMbag (fixings incl.)**  
50 x 50mm - **HDG**

## Staple on Plate

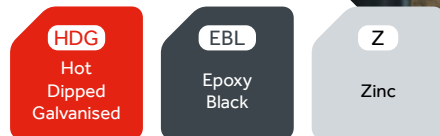
Ideal as an anchor point using chain, rope or wire.



**Available in Bag (excl. fixings) & TIMbag (fixings incl.)**  
50 x 50mm - **HDG**



## Exterior Gate, Door Hinges & Field Gate Wheels



### Light Tee Hinge

Ideal for lightweight low use gates, sheds and animal hutches.

**Available in Bag** (excl. fixings) & **TIMbag** (fixings incl.)  
100, 150, 200, 250 & 300mm - **EBL** **Z**



### Medium Tee Hinge

Ideal for medium weight regular use gates, shed and garage doors in domestic applications.

**Available in Bag** (excl. fixings) & **TIMbag** (fixings incl.)  
250, 300, 350, 375, 400 & 450mm - **HDG** **EBL** **Z**



### Strong Tee Hinge

Ideal for heavy weight high use gates, sheds and garage doors in domestic applications.

**Available in Bag** (excl. fixings) & **TIMbag** (fixings incl.)  
250, 300, 350, 400, 450 & 600mm - **HDG** **EBL**



### Scotch Tee Hinge

Ideal for heavy weight high use gates and shed doors in domestic, commercial and agricultural applications.

**Available in Bag** (excl. fixings) & **TIMbag** (fixings incl.)  
100, 150, 200, 250, 300, 350, 400, 450, 500 & 600mm - **HDG**



### Medium Strap Hinge

Commonly used for bi-folding garage and shed doors in domestic applications.

**Available in Bag** (excl. fixings)  
150 & 200mm - **Z**



### Curved Rail Hinge Set

Curved rail hinge sets are ideal for flush mounted fully framed gates with a curved top ledge. Depending on the weight distribution of the gate, the top or bottom pin can be mounted upside down to prevent unwanted removal of the gate.



**Available in Bag** (excl. fixings)  
300mm (left or right) - **HDG**



## Adjustable Band & Hook on Plate

Adjustable hook and band hinges are for hanging doors or gates flush with the frame or post. They are ideal for heavy weight, high use doors, gates, garages and stables in domestic, commercial and agricultural applications. They feature an adjustable eye bolt to allow for gate alignment whilst being fitted or at a later stage if any movement occurs.

Available in TIMbag (fixings incl.)

350, 450, 600, 750, 900

& 1200mm - HDG EBL



## Straight Band & Hook on Plate

The straight pattern hook and band hinges are for hanging the door or gate in front of the frame or post. They are ideal for heavy weight, high use doors, gates, garages and stables in domestic and agricultural applications. Depending on the weight distribution of the gate, the top or bottom pin can be mounted upside down to prevent unwanted removal of the gate.



Doors/gates over 7ft height, should be fitted with a third hinge to prevent warping.

Available in TIMbag (fixings incl.)

250, 300, 350, 450, 500, 600, 750 & 900mm - HDG EBL

## Heavy Reversible Hinge

Heavy reversible hinges are ideal for flush mounted heavy gates, garage and stable doors in domestic, commercial and agricultural applications. The pins of the hinges mount into the hinge cups and prevent gates or doors from being lifted off.



Available in TIMbag (fixings incl.)

250, 300, 350, 400, 450, 500, 600, 750, 900, 1050 & 1200mm - HDG EBL

Doors/gates over 7ft height, should be fitted with a third hinge to prevent warping.

## Cranked Band & Hook on Plate

The cranked pattern hook and band hinges are for hanging the door or gate flush with the frame or post. They are ideal for heavy weight, high use doors, gates, garages and stables in domestic and agricultural applications. Depending on the weight distribution of the gate, the top or bottom pin can be mounted upside down to prevent unwanted removal of the gate.



Available in TIMbag (fixings incl.)

250, 300, 350, 450, 500, 600, 750, 900mm - HDG EBL

## Light Duty Spring Loaded Field Gate Wheel

A light duty spring loaded gate wheel that is ideal for domestic and light commercial applications. Provides support at the leading edge of gates and doors and self adjusts to overcome sloping or uneven groundwork.



Available in Bag (fixings incl.)

270mm - Z

Max Gate Weight - 50kg

## Heavy Duty Spring Loaded Field Gate Wheel

A heavy duty spring loaded gate wheel that is ideal for agricultural and heavy commercial applications. This wheel provides support at the leading edge of gates and doors and self adjusts to overcome sloping or uneven groundwork.



Available in Bag (fixings incl.)

370mm - Z

Max Gate Weight - 135kg

## Field Gate Hinge Sets

**HDG**  
Hot  
Dipped  
Galvanised



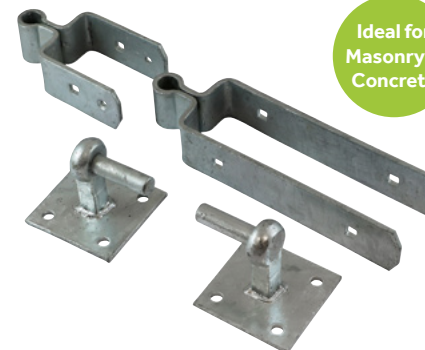
**Ideal for  
Timber  
Posts**

### Standard Double Strap Hinge Set

Ideal for use on field gates and driveway gates that are to be hung on timber posts. The hinge set provides exceptional support to the gate as the top band and bottom strap wrap around the gate and are fixed with cup square bolts to firmly secure in place.

**Available in Bag** (fixings incl.):

300mm - **HDG**  
450mm - **HDG**  
600mm - **HDG**



**Ideal for  
Masonry &  
Concrete**

### Double Strap Hinge Set with Hook on Plate

Ideal for use on field gates and driveway gates that are to be hung on timber, concrete or masonry posts.

**Available in Bag**

(fixings incl.):

300mm - **HDG**  
450mm - **HDG**  
600mm - **HDG**



**Ideal for  
Timber  
Posts**

### Adjustable Hinge Set

Ideal for use on field gates and driveway gates that are to be hung on timber posts. The hinge set provides exceptional support to the gate as the top band wraps around the gate and is fixed with cup square bolts to firmly secure in place. The bottom fitting clamps around the heel of the gate and is adjustable to allow for easy gate alignment after fitting.

**Available in Bag**

(fixings incl.):

300mm - **HDG**  
450mm - **HDG**  
600mm - **HDG**



**Ideal for  
Masonry &  
Concrete**

### Adjustable Hinge Set with Hook on Plate

Ideal for use on field gates and driveway gates that are to be hung on timber, concrete or masonry posts. The bottom fitting clamps around the heel of the gate and is adjustable to allow for easy gate alignment after fitting.

**Available in Bag**

(fixings incl.):

300mm - **HDG**  
450mm - **HDG**  
600mm - **HDG**





## Field Gate Hooks & Eyes

**HDG**  
Hot  
Dipped  
Galvanised

**Z**  
Zinc

## Gate & Post Fittings

### Gate Hook to Drive

A heavy duty hook for knocking into a timber post and to be used with field gate bands or hook and band hinges. Barbed to prevent the hook from working loose.



**Available in Bag** (no fixings required):  
215 x 19mm (Pin Ø19mm) - **HDG**  
215 x 22mm (Pin Ø22mm) - **HDG**

### Gate Hook to Bolt

Heavy duty hook to bolt to suit 4" to 10" timber posts and to be used with field gate bands or hook and band hinges. Supplied with square plate washer and hex nuts.



**Available in Bag** (no fixings required):  
M20 x 325mm (Pin Ø19mm) - **HDG**  
M22 x 325mm (Pin Ø22mm) - **HDG**

## Adjustable Gate Eye

Ideal for use in hanging timber or metal gates and to be used in conjunction with gate hook with matching pin diameter.

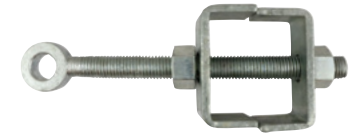


### Available in Bag:

M12 x 100mm (To Suit Pin Ø12mm) - **HDG** **Z**  
M16 x 100mm (To Suit Pin Ø16mm) - **HDG** **Z**  
M19 x 100mm (To Suit Pin Ø19mm) - **HDG** **Z**  
M19 x 150mm (To Suit Pin Ø19mm) - **HDG** **Z**  
M19 x 200mm (To Suit Pin Ø19mm) - **HDG** **Z**  
M19 x 250mm (To Suit Pin Ø19mm) - **HDG**  
M22 x 150mm (To Suit Pin Ø22mm) - **HDG**  
M22 x 200mm (To Suit Pin Ø22mm) - **HDG**  
M22 x 250mm (To Suit Pin Ø22mm) - **HDG**

## Adjustable Bottom Gate Fitting

The adjustable bottom band allows for adjustment and easy alignment of the gate after fitting and is to be used with a 19mm diameter gate hook.



**Available in Bag** (no fixings required)  
M19 x 250mm (To Suit Pin Ø19mm) - **HDG**

## Hook on Square Plate



A heavy duty hook on plate to suit field gate bands. Enables the gate to be lifted off for maintenance purposes. Alternatively, mounting upside down will prevent the gate from being lifted off preventing unwanted access.

**Available in Bag** (fixings incl.)  
100 x 100mm (Pin Ø19mm) - **HDG**

## Hook on Rectangular Plate

Spare hook on plate for hook and band hinges.

**Available in TIMbag** (fixings incl.)  
Pin Ø12, 16 & 19mm - **HDG**



## Gate Hooks to Build

Gate hooks to build are used for embedding in between layers of the post brickwork and can be used with straight and cranked hook and band hinges.

**Available in TIMbag** (fixings incl.)  
Pin Ø (Single & Double) 12, 16 & 19mm - **HDG**



## Gate & Post Fittings To Weld

### Gate Hook to Weld



Designed for welding onto a flat metal post and used in conjunction with gate eyes or hook and band hinges.

**Available in Bag** (no fixings required)  
Pin Ø12, 16, 19 & 22mm

### Gate Eye to Weld



Designed for welding to a flat metal post or gate and used with gate hook.

**Available in Bag** (no fixings required)  
To Suit Pin Ø12, 16, 19 & 22mm

## Throw-Over Loops & Catches

**HDG**  
Hot  
Dipped  
Galvanised

### Throw-Over Gate Loop

Ideal for securing pairs of gates in a closed position.



**Available in Bag (fixings incl.):**  
150mm - **HDG**  
350mm - **HDG**

### Throw-Over Gate Loop with Lifting Handle



Ideal for securing pairs of gates in a closed position. Features a loop handle for ease of operation, particularly from the saddle of a horse.

**Available in Bag (fixings incl.):**  
350mm - **HDG**  
450mm - **HDG**

### Throw-Over Locking Gate Loop



Ideal for securing pairs of gates in a closed position. Features a locking hasp and staple to prevent risk of animal / equipment theft or unwanted access.

**Available in Bag (fixings incl.):**  
450mm - **HDG**

### Field Gate Spring Fastener Set with Staple Catch



A heavy duty catch for field gates with a high frequency of use. The gate locates behind the peg of the double leg catch automatically when closed.

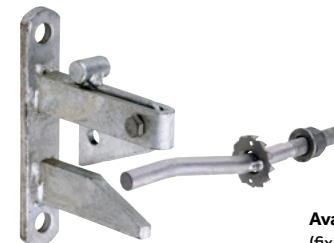
The catch requires an in front of post gate mounting.

**Available in Bag (fixings incl.)**  
610mm - **HDG**

### Field Gate Self Locking Catch with Cranked Striker

A heavy duty gate catch that is ideal for field and driveway gates. The latch automatically engages when the gate is closed and is pad-lockable for additional security.

The catch requires an in front of post gate mounting.



**Available in Bag (fixings incl.)**  
120mm - **HDG**

### Field Gate Hunting Type Lift Catch with Cranked Striker



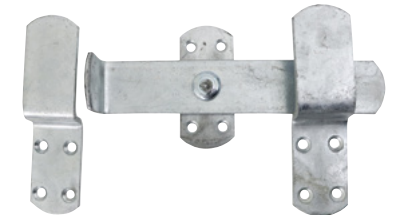
A heavy duty catch that is ideal for field and equestrian gates. An elongated handle allows gates to be used by horse riders without the need to dismount. The latch automatically engages when the gate is closed and is pad-lockable for additional security.

The catch requires an in front of post gate mounting.

**Available in Bag (fixings incl.)**  
425mm - **HDG**

### Kick Over Stable Latch

Kick over stable latches are ideal for stables and agricultural applications where a hands free operation is required.



**Available in TIMbag (fixings incl.)**  
240mm - **HDG**



## Fence Post Supports

OR

Oxide Red  
Powder  
Coated

HDG

Hot  
Dipped  
Galvanised

## Drive in Post Spike - Bolt Secure



Drive in post spikes are a quick and easy way to erect fencing and garden posts as they require no digging or concreting into place, saving time and money. They feature a 4 fin steel spike to ensure a solid, permanent, wind resistant fit.

Carriage bolts tighten and clamp the post firmly to prevent any post movement, as well as allowing for over / under sized post tolerance. Allows for removal of the post at a later stage if required. Prevents against post rot and decay as it will hold the base of the post above ground level.

- Can be over painted
- For 4ft fencing use a 600mm spike, for 6ft fencing use a 750mm spike

### Available in:

- |                                  |          |
|----------------------------------|----------|
| 50 x 50mm (450mm spike)          | - OR HDG |
| 70 x 70mm (600mm spike)          | - OR     |
| 75 x 75mm (600 or 750mm spike)   | - OR HDG |
| 90 x 90mm (600mm spike)          | - OR     |
| 100 x 100mm (600 or 750mm spike) | - OR HDG |

## Drive in Post Spike - Quick Fit

Drive in post spikes are a quick and easy way to erect fencing and garden posts as they require no digging or concreting into place, saving time and money. They feature a 4 fin steel spike to ensure a solid, permanent, wind resistant fit.

The quick fit version features inverted fins inside the post holder section that will hold the post in a vice like grip. The system prevents against post rot and decay as it will hold the base of the post above ground level.

- Can be over painted
- For 4ft fencing use a 600mm spike, for 6ft fencing use a 750mm spike



### Available in:

- 75 x 75mm (600 or 750mm spike) - OR HDG  
100 x 100mm (600 or 750mm spike) - OR HDG



## Driving Tool

The driving tool is for use when driving a fence post spike into the ground. The tool is made from hardened plastic and will prevent the post section from being damaged when being driven in.



### Available in:

- 75 x 75mm & 100 x 100mm

## Bolt Down Shoes

Can be over painted

Bolt down fence post shoes are a quick and easy way to erect fencing and garden posts as they require no digging or concreting into place, saving time and money.

Designed to be fixed down onto an existing concrete base or wall and are perfect for patio fencing, decking, pergolas or car ports.

### Bolt Secure



- Bolts secure & clamp the post firmly in place
- Bolts allow for post removal at a later stage
- Prevents against post rot & decay as it holds the base of the post above ground level

Available in:

- 50 x 50mm - **OR** **HDG**  
 70 x 70mm - **OR**  
 75 x 75mm - **OR** **HDG**  
 90 x 90mm - **OR**  
 100 x 100mm - **OR** **HDG**  
 150 x 150mm - **OR** **HDG**

### Quick Fit



- Inverted fins hold the post in a vice like grip
- Prevents against post rot & decay as it holds the base of the post above ground level

Available in:

- 75 x 75mm - **OR** **HDG**  
 100 x 100mm - **OR** **HDG**

### Flush Fit - Bolt Secure



- Designed to be fixed down onto an existing concrete base or wall where the post needs to be fitted flush against a wall
- Bolts secure & clamp the post firmly in place
- Bolts allow for post removal at a later stage
- Prevents against post rot & decay as it holds the base of the post above ground level

Available in:

- 75 x 75mm - **OR** **HDG**  
 100 x 100mm - **OR** **HDG**

## Concrete in Shoe - Bolt Secure

Designed to be set into concrete.



- Fins hold the support firmly in the concrete
- Bolts secure and clamps the post firmly in place
- Bolts allow for post removal at a later stage
- Prevents against post rot and decay as it holds the base of the post above ground level

Available in:

- 75 x 75mm - **OR** **HDG**  
 100 x 100mm - **OR** **HDG**

## Post Extender - Quick Fit

- Raise the height of fence posts by up to 1m
- Fins hold each post in a vice like grip
- Can be painted over to match with a different fence colour

Available in:

- 75 x 75mm - **OR**  
 100 x 100mm - **OR**



## Repair Spike - Bolt Secure

Designed for the repair and replacement of rotten or damaged fence posts that have been concreted in.



- The spike drives down between the existing wood post and concrete to leave a solid base for installation of a new post
- Bolts secure and clamps the post firmly in place
- Bolts allow for post removal at a later stage
- Prevents against post rot and decay as it holds the base of the post above ground level

Available in:

- 75 x 75mm - **OR** **HDG**  
 100 x 100mm - **OR** **HDG**





## Fencing Accessories



## Fence Post Caps

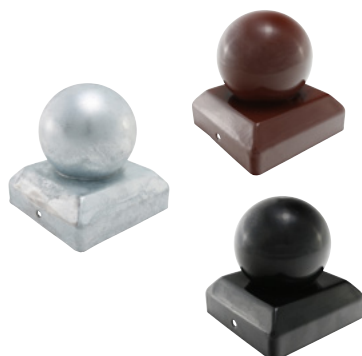
- Perfect decorative finish to the top of fence post
- Protects the top of the fence post from weather damage
- Can be painted over to match with a different fence colour

### Pyramid Post Cap



**Available in:**  
 50 x 50mm - OR Z EBL  
 75 x 75mm - OR Z EBL  
 100 x 100mm - OR Z EBL

### Ball Post Cap



## Knee Rail Support Bracket



Designed for securing rails onto birds mouth posts.

**Available in:**  
 250 x 46mm - G  
 250 x 90mm - G

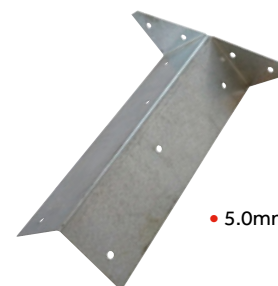
## Universal Post Extender



- Raise the height of fence posts by up to 1.2m
- 4.0mm Screw Holes (x12)

**Available in:**  
 180 x 60 x 60mm - G

## Arris Rail Bracket

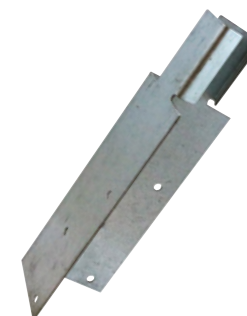


Suitable for securing arris rails to a square fence post when building feather edge fencing or to repair a wooden arris rail to an existing post.

- 5.0mm Screw Holes (x10)

**Available in:**  
 225 x 65mm - G  
 300 x 65mm - G

## Arris Rail Mortice Bracket



Suitable for securing arris rails to a concrete post when building feather edge fencing or to repair a wooden arris rail to an existing post.

- 5.0mm Screw Holes (x6)

**Available in:**  
 200 x 62mm - G

## Arris Rail Support Bracket



For fitting arris rails to timber posts when building feather edge fencing or to repair a wooden arris rail to an existing post.

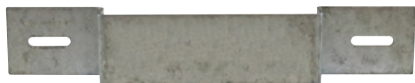
- 4.0mm Screw Holes (x4)

**Available in:**  
 90 x 60 x 60mm - G

## Panel Security Bracket

Designed for securing fence panels to 4" concrete posts and helps prevent unwanted removal or theft of fence panels.

- 5.0mm Screw Holes (x2)



**Available in:**  
233 x 40mm - **G**

## Panel Clip

A quick and easy way to secure fence panels and trellis to timber, these can also be plugged and screwed into masonry.



- 5.0mm Screw Holes (x4)

**Available in:**  
50 x 44 x 25mm - **G**  
50 x 50 x 25mm - **G**

## Z Clip

For attaching trellis or timber fence panels to posts.



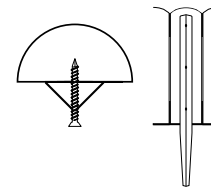
- 4.0mm Screw Holes (x4)

**Available in:**  
60 x 56 x 15mm - **G**

## Border Roll Pin

Ideal for securing border roll to the ground. The pin is pre drilled and attached to rear of the border roll using 4.5 x 50mm screws.

Use 3 border roll pins equally spaced per 1.8m of border roll.



**Available in:**  
450 x 23 x 23mm - **G**

## Twin Pin Gravel Board Clip



Suitable for fitting concrete gravel boards to concrete posts. The backplate mounts to the gravel board and the two pins locate into the post.

**Available in:**  
150 x 50mm - **G**

## Gravel Board Clip



A quick and easy way to attach timber gravel boards to timber fence posts.

- 5.5mm screw holes (x2)

**Available in:**  
150 x 25 x 30mm - **G**  
150 x 50 x 30mm - **G**



Product Codes

Size (mm) & Pg No.	Finish	Pack Type	Pack Qty	Product Code
Long Throw Locks - Single				
50 (Pg. 4)	EBL	Box	1	GLS50
70 (Pg. 4)	EBL	Box	1	GLS70
Long Throw Locks - Double				
50 (Pg. 4)	EBL	Box	1	GLD50
70 (Pg. 4)	EBL	Box	1	GLD70
Escutcheon Handle				
26 (Pg. 4)	EBL	TIMbag	1	427258
		Bag	1	RLEH8BB
		TIMbag	1	427336
		Bag	1	RLEH8CB
Rim Dead Lock				
106 x 74 (Pg. 5)	EBL	TIMbag	1	427124
		Bag	1	RDLB
Rim Sash Lock Fluted				
156 x 106 (Pg. 5)	EBL	TIMbag	1	427148
		Bag	1	RSLFB
Rim Sash Lock - Inward				
143 x 83 (Pg. 5)	EBL	TIMbag	1	427695
		Bag	1	RSLB
Rim Sash Lock - Outward				
143 x 83 (Pg. 5)	EBL	Bag	1	RSLRB
Rim Sash Lock - Reverse Plate				
74 x 22 (Pg. 5)	EBL	Bag	1	RSLRPB
Press Lock - Standard Key				
76 (Pg. 5)	EBL	TIMbag	1	427111
		Bag	1	PL3BB
100 (Pg. 5)	EBL	TIMBag	1	427754
		Bag	1	PL4BB
125 (Pg. 5)	EBL	Bag	1	PL5BB
Press Lock Spare Keys				
Pg. 5	Z	Bag	5	SPAREPLK
Press Lock - Extra Long Key				
76 (Pg. 5)	EBL	Bag	1	PL3LKB
Plastic Rim / Mortice Knob Set				
(Pg. 5)	EBL	TIMbag	1	427212
		Bag	1	RPKSB
Ring Gate Latch				
150 (Pg. 6)	HDG	TIMBag	1 Pair	RGL6GP
		Bag	1 Pair	RGL6GB
	EBL	TIMbag	1 Pair	RGL6BP
		Bag	1 Pair	RGL6BB
	Z	TIMbag	1 Pair	RGL6ZP
		Bag	1 Pair	RGL6ZB

Size (mm) & Pg No.	Finish	Pack Type	Pack Qty	Product Code
Twisted Ring Gate Latch				
150 (Pg. 6)	HDG	TIMbag	1 Pack	TRGL6GP
		Bag	1 Pack	TRGL6GB
	EBL	TIMbag	1 Pack	TRGL6BP
		Bag	1 Pack	TRGL6BB
Medium Suffolk Latch				
205 x 45 (Pg. 7)	HDG	TIMbag	1	SLMGP
		Bag	1	SLMGB
	EBL	TIMbag	1	SLMBP
		Bag	1	SLMBB
	Z	TIMbag	1	SLMZP
		Bag	1	SLMZB
Heavy Suffolk Latch				
219 x 50 (Pg. 7)	HDG	Bag	1	523585
	EBL	Bag	1	523369
Automatic Gate Catch				
50 (Pg. 7)	HDG	TIMbag	1	AGLMGP
		Bag	1	AGLMGB
	EBL	TIMbag	1	AGLMBP
		Bag	1	AGLMBB
	Z	TIMbag	1	AGLMZP
		Bag	1	AGLMZB
Heavy Automatic Gate Catch				
50 (Pg. 7)	HDG	TIMbag	1	AGLHGP
		Bag	1	AGLHGB
Hot Bed Handle				
150 (Pg. 7)	EBL	TIMbag	1	HBH6BP
		Bag	1	HBH6B
175 (Pg. 7)	EBL	TIMbag	1	HBH7BP
		Bag	1	HBH7B
Turn Button Cast Iron				
50 (Pg. 7)	HDG	TIMbag	2	TB2GP
		Bag	1	TB2GB
	EBL	TIMbag	2	TB2BP
		Bag	1	TB2BB
52 (Pg. 7)	Z	Bag	20	TB2ZB
67 (Pg. 7)	Z	Bag	20	TB25ZB
Gate Spring				
200 (Pg. 8)	EBL	TIMbag	1	GS8BP
		Bag	1	GS8BB
	Z	TIMbag	1	GS8ZP
		Bag	1	GS8ZB
250 (Pg. 8)	EBL	TIMbag	1	GS10BP
		Bag	1	GS10BB
	Z	TIMbag	1	GS10ZP
		Bag	1	GS10ZB
Cabin Hook Cast Iron				
75 (Pg. 8)	HDG	TIMbag	1	527568
		Bag	1	523656
	EBL	TIMbag	1	527115
		Bag	1	523467

Size (mm) & Pg No.	Finish	Pack Type	Pack Qty	Product Code
100 (Pg. 8)	HDG	TIMbag	1	527541
		Bag	1	523219
	EBL	TIMbag	1	527225
		Bag	1	523258
150 (Pg. 8)	HDG	TIMbag	1	527114
		Bag	1	523953
	EBL	TIMbag	1	527998
		Bag	1	523963
200 (Pg. 8)	HDG	TIMbag	1	527554
		Bag	1	523632
	EBL	TIMbag	1	527651
		Bag	1	523458
250 (Pg. 8)	HDG	TIMbag	1	527665
		Bag	1	523454
	EBL	TIMbag	1	527478
		Bag	1	523957
300 (Pg. 8)	HDG	Bag	1	523565
	EBL	Bag	1	523326
Cabin Hook Wire Pattern				
100 (Pg. 8)	EBL	TIMbag	1	WCH4BP
		Bag	1	WCH4BB
	Z	TIMbag	1	WCH4ZP
		Bag	1	WCH4ZB
150 (Pg. 8)	EBL	TIMbag	1	WCH6BP
		Bag	1	WCH6BB
	Z	TIMbag	1	WCH6ZP
		Bag	1	WCH6ZB
200 (Pg. 8)	EBL	TIMbag	1	WCH8BP
		Bag	1	WCH8BB
	Z	TIMbag	1	WCH8ZP
		Bag	1	WCH8ZB
250 (Pg. 8)	EBL	Bag	1	WCH10BB
	Z	Bag	1	WCH10ZB
300 (Pg. 8)	EBL	Bag	1	WCH12BB
	Z	Bag	1	WCH12ZB
Pedestrian Gate Kit				
To suit :	HDG	TIMbag	1	427562
700 - 1050 (Pg. 9)	EBL	TIMbag	1	427123
	Z	TIMbag	1	427741
Side Gate Kit - Ring Latch				
To suit :	HDG	TIMbag	1	427357
900 - 1350 (Pg. 9)	EBL	TIMbag	1	427548
	Z	TIMbag	1	427546
Side Gate Kit - Suffolk Latch				
To suit :	HDG	TIMbag	1	427635
900 - 1350 (Pg. 9)	EBL	TIMbag	1	427215
	Z	TIMbag	1	427998
Necked Tower Bolt				
100 (Pg.10)	HDG	TIMbag	1	TBN4GP
		Bag	1	TBN4GB
	EBL	TIMbag	1	TBN4BP
		Bag	1	TBN4BB

Product Codes

Size (mm) & Pg No.	Finish	Pack Type	Pack Qty	Product Code
150 (Pg. 10)	HDG	TIMbag	1	TBN6GP
		Bag	1	TBN6GB
	EBL	TIMbag	1	TBN6BP
		Bag	1	TBN6BB
200 (Pg. 10)	HDG	TIMbag	1	TBN8GP
		Bag	1	TBN8GB
	EBL	TIMbag	1	TBN8BP
		Bag	1	TBN8BB
Straight Tower Bolt				
75 (Pg. 10)	HDG	TIMbag	1	TBS3GP
		Bag	1	TBS3GB
	EBL	TIMbag	1	TBS3BP
		Bag	1	TBS3BB
	Z	TIMbag	1	TBS3ZP
		Bag	1	TBS3ZB
100 (Pg. 10)	HDG	TIMbag	1	TBS4GP
		Bag	1	TBS4GB
	EBL	TIMbag	1	TBS4BP
		Bag	1	TBS4BB
	Z	TIMbag	1	TBS4ZP
		Bag	1	TBS4ZB
150 (Pg. 10)	HDG	TIMbag	1	TBS6GP
		Bag	1	TBS6GB
	EBL	TIMbag	1	TBS6BP
		Bag	1	TBS6BB
	Z	TIMbag	1	TBS6ZP
		Bag	1	TBS6ZB
200 (Pg. 10)	HDG	TIMbag	1	TBS8GP
		Bag	1	TBS8GB
	EBL	TIMbag	1	TBS8BP
		Bag	1	TBS8BB
	Z	TIMbag	1	TBS8ZP
		Bag	1	TBS8ZB
250 (Pg. 10)	HDG	TIMbag	1	TBS10GP
		Bag	1	TBS10GB
	EBL	TIMbag	1	TBS10BP
		Bag	1	TBS10BB
	Z	TIMbag	1	TBS10ZP
		Bag	1	TBS10ZB
Oval Padbolt				
100 (Pg. 11)	HDG	TIMbag	1	OP4GP
		Bag	1	OP4GB
	EBL	TIMbag	1	OP4BP
		Bag	1	OP4BB
	Z	TIMbag	1	OP4ZP
		Bag	1	OP4ZB
Slide Action Padbolt				
185 (Pg. 11)	EBL	TIMbag	1	287114
		Bag	1	282456
	Z	TIMbag	1	287585
		Bag	1	282789

Size (mm) & Pg No.	Finish	Pack Type	Pack Qty	Product Code
Brenton Padbolt				
100 (Pg. 11)	HDG	TIMbag	1	BP4GP
		Bag	1	BP4GB
	EBL	TIMbag	1	BP4BP
		Bag	1	BP4BB
	Z	TIMbag	1	BP4ZP
		Bag	1	BP4ZB
150 (Pg. 11)	HDG	TIMbag	1	BP6GP
		Bag	1	BP6GB
	EBL	TIMbag	1	BP6BP
		Bag	1	BP6BB
	Z	TIMbag	1	BP6ZP
		Bag	1	BP6ZB
200 (Pg. 11)	HDG	TIMbag	1	BP8GP
		Bag	1	BP8GB
	EBL	TIMbag	1	BP8BP
		Bag	1	BP8BB
	Z	TIMbag	1	BP8ZP
		Bag	1	BP8ZB
Brenton Padbolt - Elongated Keep				
102 (Pg. 11)	Z	Bag	1	282004
Heavy Brenton Padbolt				
150 (Pg. 11)	HDG	TIMbag	1	287258
		Bag	1	282656
200 (Pg. 11)	HDG	TIMbag	1	287456
		Bag	1	282219
250 (Pg. 11)	HDG	TIMbag	1	287658
		Bag	1	282953
300 (Pg. 11)	HDG	TIMbag	1	287477
		Bag	1	282632
Wire Pattern Hasp & Staple				
75 (Pg. 12)	EBL	Bag	1	WHS3BB
		Z	Bag	1
	EBL	TIMbag	1	WHS4BP
100 (Pg. 12)	EBL	Bag	1	WHS4BB
		Z	TIMbag	1
	EBL	Bag	1	WHS4ZB
150 (Pg. 12)	EBL	TIMbag	1	WHS6BP
		Bag	1	WHS6BB
	Z	TIMbag	1	WHS6ZP
Z	Bag	1	WHS6ZB	
Hinged Hasp & Staple - Single				
160 (Pg. 12)	Z	Blister	1	PHS160
Hinged Hasp & Staple - Double				
200 (Pg. 12)	Z	Blister	1	PHS200
Hybrid Hasp & Staple				
125 (Pg. 13)	Z	Bag	1	427393

Product Codes

Size (mm) & Pg No.	Finish	Pack Type	Pack Qty	Product Code
450 (Pg. 15)	HDG	TIMbag	1	DDB18GP
		Bag	1	DDB18GB
	EBL	TIMbag	1	DDB18BP
		Bag	1	DDB18BB
Heavy Cross Pattern Door Bolt				
300 (Pg. 15)	HDG	Bag	1	282639
450 (Pg. 15)	HDG	Bag	1	282264
600 (Pg. 15)	HDG	Bag	1	282852
Monkey Tail Bolt				
300 (Pg. 16)	HDG	TIMbag	1	MBS12GP
		Bag	1	MBS12GB
	EBL	TIMbag	1	MBS12BP
		Bag	1	MBS12BB
450 (Pg. 16)	HDG	TIMbag	1	MBS18GP
		Bag	1	MBS18GB
	EBL	TIMbag	1	MBS18BP
		Bag	1	MBS18BB
Bow Handle Bolt				
300 (Pg. 16)	HDG	TIMbag	1	287771
		Bag	1	282998
	EBL	TIMbag	1	287665
		Bag	1	282582
450 (Pg. 16)	HDG	TIMbag	1	287117
		Bag	1	282114
	EBL	TIMbag	1	287332
		Bag	1	282951
Foot Bolt				
200 (Pg. 16)	EBL	TIMbag	1	GFB8BP
		Bag	1	GFB8BB
	Z	TIMbag	1	GFB8ZP
		Bag	1	GFB8ZB
Spring Chain Bolt				
450 (Pg. 17)	EBL	TIMbag	1	CB18BP
		Bag	1	CB18BB
	Z	TIMbag	1	CB18ZP
		Bag	1	CB18ZB
Spring Loaded Animal Bolt				
143 (Pg. 17)	HDG	TIMbag	1	287878
Bag		1	282454	
225 (Pg. 17)	HDG	TIMbag	1	287663
Bag		1	282565	
242 (Pg. 17)	HDG	Bag	1	282417
Junior Garage Door Holder Wide Lintel				
375 (Pg. 17)	EBL	Bag	1	523114
Senior Garage Door Holder Wide Lintel				
635 (Pg. 17)	EBL	Bag	1	523417

Size (mm) & Pg No.	Finish	Pack Type	Pack Qty	Product Code
Senior Garage Door Holder Narrow Lintel				
635 (Pg.17)	EBL	Bag	1	523998
Welded Link Chain				
10.0m (Pg. 18)	HDG	Clip	1	432HDGC10
		Clip	1	521HDGC10
	Z	Box	1	642HDGC10
3.0m (Pg. 18)	HDG	Clip	1	326BZPC10
2.0m (Pg. 18)	HDG	Clip	1	432HDGC
1.5m (Pg. 18)	HDG	Clip	1	642HDGC
1.5m (Pg. 18)	HDG	Clip	1	852HDGC
Single Link Jack Chain				
10m (Pg. 19)	Z	Box	1	427487
Wire Ropes				
10.0m (Pg. 19)	Z	Box	1	427004
20.0m (Pg. 19)	Z	Box	1	427333
30.0m (Pg. 19)	Z	Box	1	427506
Wire Rope Grips				
To Fit Rope: 3 (Pg. 19)	Z	Box	1	427819
Wire Rope Thimbles				
To Fit Rope: 4 (Pg. 19)	Z	Box	1	427110
Quick Repair Link				
5 (Pg. 20)	Z	TIMBag	5	5QLP
		Bag	10	5QLB
6 (Pg. 20)	Z	TIMBag	5	6QLP
		Bag	10	6QLB
8 (Pg. 20)	Z	TIMBag	5	8QLP
		Bag	5	8QLB
Carbine Hook				
5 (Pg. 20)	Z	TIMBag	5	5CHP
		Bag	10	5CHB
6 (Pg. 20)	Z	TIMBag	5	6CHP
		Bag	10	6CHB
8 (Pg. 20)	Z	TIMBag	5	8CHP
		Bag	10	8CHB
Ring on Plate				
50 x 50 (Pg. 20)	HDG	TIMBag	1	RP2GP
		Bag	1	RP2GB
Dee Shackle				
5 (Pg. 21)	HDG	TIMBag	5	5DSP
		Bag	20	5DSB

Size (mm) & Pg No.	Finish	Pack Type	Pack Qty	Product Code
6 (Pg. 21)	HDG	TIMbag	5	6DSP
		Bag	20	6DSB
8 (Pg. 21)	HDG	TIMbag	5	8DSP
		Bag	20	8DSB
Bow Shackle				
5 (Pg. 21)	HDG	TIMbag	5	5BSP
		Bag	20	5BSB
6 (Pg. 21)	HDG	TIMbag	5	6BSP
		Bag	20	6BSB
8 (Pg. 21)	HDG	TIMbag	5	8BSP
		Bag	20	8BSB
Hook on Plate				
50 x 50 (Pg. 21)	HDG	TIMbag	1	HP2GP
		Bag	1	HP2GB
Staple on Plate				
50 x 50 (Pg. 21)	HDG	TIMbag	1	SP2GP
		Bag	1	SP2GB
Light Tee Hinge				
100 (Pg. 22)	EBL	TIMbag	1 Pair	LTH4B
		Bag	1 Pair	LTH4BB
	Z	TIMbag	1 Pair	LTH4Z
		Bag	1 Pair	LTH4ZB
150 (Pg. 22)	EBL	TIMbag	1 Pair	LTH6B
		Bag	1 Pair	LTH6BB
	Z	TIMbag	1 Pair	LTH6Z
		Bag	1 Pair	LTH6ZB
200 (Pg. 22)	EBL	TIMbag	1 Pair	LTH8B
		Bag	1 Pair	LTH8BB
	Z	TIMbag	1 Pair	LTH8Z
		Bag	1 Pair	LTH8ZB
250 (Pg. 22)	EBL	TIMbag	1 Pair	LTH10B
		Bag	1 Pair	LTH10BB
	Z	TIMbag	1 Pair	LTH10Z
		Bag	1 Pair	LTH10ZB
300 (Pg. 22)	EBL	TIMbag	1 Pair	LTH12B
		Bag	1 Pair	442268
	Z	TIMbag	1 Pair	LTH12Z
		Bag	1 Pair	442214
Medium Tee Hinge				
250 (Pg. 22)	HDG	TIMbag	1 Pair	MTH10G
		Bag	1 Pair	MTH10GB
	EBL	TIMbag	1 Pair	MTH10B
		Bag	1 Pair	MTH10BB
	Z	TIMbag	1 Pair	MTH10Z
		Bag	1 Pair	MTH10ZB
300 (Pg. 22)	HDG	TIMbag	1 Pair	MTH12G
		Bag	1 Pair	MTH12GB
	EBL	TIMbag	1 Pair	MTH12B
		Bag	1 Pair	MTH12BB
	Z	TIMbag	1 Pair	MTH12Z
		Bag	1 Pair	MTH12ZB

Product Codes

Size (mm) & Pg No.	Finish	Pack Type	Pack Qty	Product Code
350 (Pg. 22)	HDG	TIMbag	1 Pair	MTH14G
		Bag	1 Pair	MTH14GB
	EBL	TIMbag	1 Pair	MTH14B
		Bag	1 Pair	MTH14BB
	Z	TIMbag	1 Pair	MTH14Z
		Bag	1 Pair	MTH14ZB
375 (Pg. 22)	HDG	TIMbag	1 Pair	MTH15G
		Bag	1 Pair	MTH15GB
	EBL	TIMbag	1 Pair	MTH15B
		Bag	1 Pair	MTH15BB
	Z	TIMbag	1 Pair	MTH15Z
		Bag	1 Pair	MTH15ZB
400 (Pg. 22)	HDG	TIMbag	1 Pair	MTH16G
		Bag	1 Pair	MTH16GB
	EBL	TIMbag	1 Pair	MTH16B
		Bag	1 Pair	MTH16BB
	Z	TIMbag	1 Pair	MTH16Z
		Bag	1 Pair	MTH16ZB
450 (Pg. 22)	HDG	TIMbag	1 Pair	MTH18G
		Bag	1 Pair	MTH18GB
	EBL	TIMbag	1 Pair	MTH18B
		Bag	1 Pair	MTH18BB
	Z	TIMbag	1 Pair	MTH18Z
		Bag	1 Pair	MTH18ZB
Strong Tee Hinge				
250 (Pg. 23)	HDG	TIMbag	1 Pair	STH10G
		Bag	1 Pair	STH10GB
	EBL	TIMbag	1 Pair	STH10B
300 (Pg. 23)	HDG	Bag	1 Pair	STH10BB
		TIMbag	1 Pair	STH12G
	EBL	Bag	1 Pair	STH12GB
350 (Pg. 23)	HDG	TIMbag	1 Pair	STH12B
		Bag	1 Pair	STH12BB
	EBL	TIMbag	1 Pair	STH14G
400 (Pg. 23)	HDG	Bag	1 Pair	STH14GB
		TIMbag	1 Pair	STH14B
	EBL	Bag	1 Pair	STH14BB
450 (Pg. 23)	HDG	TIMbag	1 Pair	STH16G
		Bag	1 Pair	STH16GB
	EBL	TIMbag	1 Pair	STH16B
500 (Pg. 23)	HDG	Bag	1 Pair	STH16BB
		TIMbag	1 Pair	STH18G
	EBL	Bag	1 Pair	STH18GB
550 (Pg. 23)	HDG	TIMbag	1 Pair	STH18B
		Bag	1 Pair	STH18BB
	EBL	TIMbag	1 Pair	STH24G
600 (Pg. 23)	HDG	Bag	1 Pair	STH24GB
		TIMbag	1 Pair	STH24B
	EBL	Bag	1 Pair	STH24BB
Scotch Tee Hinge				
100 (Pg. 23)	HDG	TIMbag	1 Pair	447558
		Bag	1 Pair	442270
150 (Pg. 23)	HDG	TIMbag	1 Pair	447254
		Bag	1 Pair	442159

Size (mm) & Pg No.	Finish	Pack Type	Pack Qty	Product Code
200 (Pg. 23)	HDG	TIMbag	1 Pair	447232
		Bag	1 Pair	442241
250 (Pg. 23)	HDG	TIMbag	1 Pair	447778
		Bag	1 Pair	442657
300 (Pg. 23)	HDG	TIMbag	1 Pair	447669
		Bag	1 Pair	442225
355 (Pg. 23)	HDG	TIMbag	1 Pair	447552
		Bag	1 Pair	442678
400 (Pg. 23)	HDG	TIMbag	1 Pair	447154
		Bag	1 Pair	442336
450 (Pg. 23)	HDG	TIMbag	1 Pair	447785
		Bag	1 Pair	442784
500 (Pg. 23)	HDG	TIMbag	1 Pair	447336
		Bag	1 Pair	442114
600 (Pg. 23)	HDG	TIMbag	1 Pair	447123
		Bag	1 Pair	442878
Medium Strap Hinge				
150 (Pg. 23)	Z	Bag	1 Pair	SH6ZB
200 (Pg. 23)	Z	Bag	1 Pair	SH8ZB
Curved Rail Hinge Set - Left				
300 (Pg. 23)	HDG	Bag	1 Pair	CRHLG
Curved Rail Hinge Set - Right				
300 (Pg. 23)	HDG	Bag	1 Pair	CRHRG
Adjustable Band & Hook on Plate				
350 (Pg. 24)	HDG	TIMbag	1 Pair	ABH350G
	EBL	TIMbag	1 Pair	ABH350B
450 (Pg. 24)	HDG	TIMbag	1 Pair	ABH450G
	EBL	TIMbag	1 Pair	ABH450B
600 (Pg. 24)	HDG	TIMbag	1 Pair	ABH600G
	EBL	TIMbag	1 Pair	ABH600B
750 (Pg. 24)	HDG	TIMbag	1 Pair	ABH750G
	EBL	TIMbag	1 Pair	ABH750B
900 (Pg. 24)	HDG	TIMbag	1 Pair	ABH900G
	EBL	TIMbag	1 Pair	ABH900B
1200 (Pg. 24)	HDG	TIMbag	1 Pair	ABH1200G
	EBL	TIMbag	1 Pair	ABH1200B
Straight Band & Hook on Plate				
250 (Pg. 24)	HDG	TIMbag	1 Pair	HBS250G
	EBL	TIMbag	1 Pair	HBS250B
300 (Pg. 24)	HDG	TIMbag	1 Pair	HBS300G
	EBL	TIMbag	1 Pair	HBS300B
350 (Pg. 24)	HDG	TIMbag	1 Pair	HBS350G
	EBL	TIMbag	1 Pair	HBS350B
450 (Pg. 24)	HDG	TIMbag	1 Pair	HBS450G
	EBL	TIMbag	1 Pair	HBS450B
500 (Pg. 24)	HDG	TIMbag	1 Pair	HBS500G
	EBL	TIMbag	1 Pair	HBS500B
600 (Pg. 24)	HDG	TIMbag	1 Pair	HBS600G
	EBL	TIMbag	1 Pair	HBS600B



Product Codes

Size (mm) & Pg No.	Finish	Pack Type	Pack Qty	Product Code
Standard Double Strap Hinge Set				
300 (Pg. 26)	HDG	Bag	1	SFH300G
450 (Pg. 26)	HDG	Bag	1	SFH450G
600 (Pg. 26)	HDG	Bag	1	SFH600G
Double Strap Hinge Set with Hook on Plate				
300 (Pg. 27)	HDG	Bag	1	DSFH300G
450 (Pg. 27)	HDG	Bag	1	DSFH450G
600 (Pg. 27)	HDG	Bag	1	DSFH600G
Adjustable Hinge Set				
300 (Pg. 27)	HDG	Bag	1	AFH300G
450 (Pg. 27)	HDG	Bag	1	AFH450G
600 (Pg. 27)	HDG	Bag	1	AFH600G
Adjustable Hinge Set with Hook on Plate				
300 (Pg. 27)	HDG	Bag	1	AFHP300G
450 (Pg. 27)	HDG	Bag	1	AFHP450G
600 (Pg. 27)	HDG	Bag	1	AFHP600G
Gate Hook to Drive				
215 x 19 (Pg. 28)	HDG	Bag	1	GHD19GEA
215 x 22 (Pg. 28)	HDG	Bag	1	GHD22GEA
Gate Hook to Bolt				
M20 x 325 (Pg. 28)	HDG	Bag	1	GHB19325GEA
M22 x 325 (Pg. 28)	HDG	Bag	1	GHB22325GEA
Adjustable Gate Eye				
M12 x 100 (Pg. 29)	HDG	Bag	1	AGE12100GEA
M16 x 100 (Pg. 29)	HDG	Bag	1	AGE16100GEA
M19 x 100 (Pg. 29)	HDG	Bag	1	AGE19100GEA
M19 x 150 (Pg. 29)	HDG	Bag	1	AGE19150GEA
M19 x 200 (Pg. 29)	HDG	Bag	1	AGE19200GEA
M19 x 250 (Pg. 29)	HDG	Bag	1	AGE19250GEA

Size (mm) & Pg No.	Finish	Pack Type	Pack Qty	Product Code
M22 x 150 (Pg. 29)	HDG	Bag	1	AGE22150GEA
M22 x 200 (Pg. 29)	HDG	Bag	1	AGE22200GEA
M22 x 250 (Pg. 29)	HDG	Bag	1	AGE22250GEA
Adjustable Bottom Gate Fitting				
M19 x 250 (Pg. 29)	HDG	Bag	1	AGF19GEA
Hook on Square Plate				
100 x 100 (Pg. 29)	HDG	Bag	1	HSP19GEA
Hook on Rectangular Plate				
12 (Pg. 29)	HDG	Bag	1 Pair	HRP12G
16 (Pg. 29)	HDG	Bag	1 Pair	HRP16G
19 (Pg. 29)	HDG	Bag	1 Pair	HRP19G
Gate Hooks to Build - Single				
12 (Pg. 29)	HDG	TIMbag	1 Pair	GHBSB12G
16 (Pg. 29)	HDG	TIMbag	1 Pair	GHBSB16G
19 (Pg. 29)	HDG	TIMbag	1 Pair	GHBSB19G
Gate Hooks to Build - Double				
12 (Pg. 29)	HDG	TIMbag	1 Pair	GHbdb12G
16 (Pg. 29)	HDG	TIMbag	1 Pair	GHbdb16G
19 (Pg. 29)	HDG	TIMbag	1 Pair	GHbdb19G
Gate Hook to Weld				
12 (Pg. 29)	-	Bag	2	GHW12S
16 (Pg. 29)	-	Bag	2	GHW16S
19 (Pg. 29)	-	Bag	2	GHW19S
22 (Pg. 29)	-	Bag	2	GHW22S
Gate Eye to Weld				
12 (Pg. 29)	-	Bag	2	GEW12S
16 (Pg. 29)	-	Bag	2	GEW16S
19 (Pg. 29)	-	Bag	2	GEW19S
22 (Pg. 29)	-	Bag	2	GEW22S
Throw-Over Gate Loop				
150 (Pg. 30)	HDG	Bag	1	TGL150G
350 (Pg. 30)	HDG	Bag	1	TGL350G
Throw-Over Gate Loop with Lifting Handle				
350 (Pg. 30)	HDG	Bag	1	TGLH350G
450 (Pg. 30)	HDG	Bag	1	TGLH450G
Throw-Over Locking Gate Loop				
450 (Pg. 30)	HDG	Bag	1	TLGL450G

Size (mm) & Pg No.	Finish	Pack Type	Pack Qty	Product Code
Field Gate Spring Fastener Set with Staple Catch				
610 (Pg. 31)	HDG	Bag	1	SFF610G
Field Gate Hunting Type Lift Catch with Cranked Striker				
425 (Pg. 31)	HDG	Bag	1	HLC425G
Field Gate Self Locking Catch with Cranked Striker				
120 (Pg. 31)	HDG	Bag	1	SLCG
Kick Over Stable Latch				
240 (Pg. 31)	HDG	TIMbag	1	KOSLG
Drive In Post Spike - Bolt Secure				
50 x 50 (Pg. 32)	OR	Each	1	PSB50450
450 Spike (Pg. 32)	HDG	Each	1	PSB50450G
70 x 70 (Pg. 32)	OR	Each	1	PSB70600
600 Spike (Pg. 32)	OR	Each	1	PSB75600
75 x 75 (Pg. 32)	HDG	Each	1	PSB75600G
75 x 75 (Pg. 32)	OR	Each	1	PSB75750
750 Spike (Pg. 32)	HDG	Each	1	PSB75750G
90 x 90 (Pg. 32)	OR	Each	1	PSB90600
600 Spike (Pg. 32)	OR	Each	1	PSB100600
100 x 100 (Pg. 32)	HDG	Each	1	PSB100600G
100 x 100 (Pg. 32)	OR	Each	1	PSB100750
750 Spike (Pg. 32)	HDG	Each	1	PSB100750G
Drive In Post Spike - Quick Fit				
75 x 75 (Pg. 33)	OR	Each	1	PSQ75600
600 Spike (Pg. 33)	HDG	Each	1	PSQ75600G
75 x 75 (Pg. 33)	OR	Each	1	PSQ75750
750 Spike (Pg. 33)	HDG	Each	1	PSQ75750G
100 x 100 (Pg. 33)	OR	Each	1	PSQ100600
600 Spike (Pg. 33)	HDG	Each	1	PSQ100600G
100 x 100 (Pg. 33)	OR	Each	1	PSQ100750
750 Spike (Pg. 33)	HDG	Each	1	PSQ100750G
Driving Tool				
75 x 75 (Pg. 33)	-	Each	1	DT75
100 x 100 (Pg. 33)	-	Each	1	DT100

Product Codes

Size (mm) & Pg No.	Finish	Pack Type	Pack Qty	Product Code
Bolt Down Shoes - Bolt Secure				
50 x 50 (Pg. 34)	OR	Each	1	BDB50
	HDG	Each	1	BDB50G
70 x 70 (Pg. 34)	OR	Each	1	BDB70
75 x 75 (Pg. 34)	OR	Each	1	BDB75
	HDG	Each	1	BDB75G
90 x 90 (Pg. 34)	OR	Each	1	BDB90
100 x 100 (Pg. 34)	OR	Each	1	BDB100
	HDG	Each	1	BDB100G
150 x 150 (Pg. 34)	OR	Each	1	BDB150
	HDG	Each	1	BDB150G
Bolt Down Shoes - Quick Fit				
75 x 75 (Pg. 34)	OR	Each	1	BDQ75
	HDG	Each	1	BDQ75G
100 x 100 (Pg. 34)	OR	Each	1	BDQ100
	HDG	Each	1	BDQ100G
Bolt Down Shoes - Flush Fit Bolt Secure				
75 x 75 (Pg. 34)	OR	Each	1	FDBD75
	HDG	Each	1	FDBD75G
100 x 100 (Pg. 34)	OR	Each	1	FDBD100
	HDG	Each	1	FDBD100G
Concrete in Shoe - Bolt Secure				
75 x 75 (Pg. 35)	OR	Each	1	CSB75
	HDG	Each	1	CSB75G
100 x 100 (Pg. 35)	OR	Each	1	CSB100
	HDG	Each	1	CSB100G
Repair Spike - Bolt Secure				
75 x 75 (Pg. 35)	OR	Each	1	RS75
	HDG	Each	1	RS75G
100 x 100 (Pg. 35)	OR	Each	1	RS100
	HDG	Each	1	RS100G
Post Extender - Quick Fit				
75 x 75 (Pg. 35)	OR	Each	1	PEX75
100 x 100 (Pg. 35)	OR	Each	1	PEX100
Pyramid Post Cap				
50 x 50 (Pg. 36)	OR	Each	1	FPC50
	EB	Each	1	FPC50B
	Z	Each	1	FPC50G
	OR	Each	1	FPC75
75 x 75 (Pg. 36)	EB	Each	1	FPC75B
	Z	Each	1	FPC75G
	OR	Each	1	FPC100
100 x 100 (Pg. 36)	EB	Each	1	FPC100B
	Z	Each	1	FPC100G

Size (mm) & Pg No.	Finish	Pack Type	Pack Qty	Product Code
Ball Post Cap				
	OR	Each	1	BPC50
50 x 50 (Pg. 36)	EB	Each	1	BPC50B
	Z	Each	1	BPC50G
	OR	Each	1	BPC75
75 x 75 (Pg. 36)	EB	Each	1	BPC75B
	Z	Each	1	BPC75G
	OR	Each	1	BPC100
100 x 100 (Pg. 36)	EB	Each	1	BPC100B
	Z	Each	1	BPC100G
Knee Rail Support Bracket				
250 x 46 (Pg. 37)	G	Each	1	KRS46
250 x 90 (Pg. 37)	G	Each	1	KRS90
Universal Post Extender				
180 x 60 x 60 (Pg. 37)	G	Each	1	UPE180
Arris Rail Bracket				
225 x 65 (Pg. 37)	G	Each	1	ARS225
300 x 65 (Pg. 37)	G	Each	1	ARS300
Arris Rail Mortice Bracket				
200 x 62 (Pg. 37)	G	Each	1	ARBM200
Arris Rail Support Bracket				
90 x 60 x 60 (Pg. 37)	G	Each	1	ARBS
Panel Security Bracket				
233 x 40 (Pg. 38)	G	Each	1	PSB233
Panel Clip				
50 x 44 x 25 (Pg. 38)	G	Each	1	PC44
50 x 50 x 25 (Pg. 38)	G	Each	1	PC50
Z Clip				
60 x 56 x 15 (Pg. 38)	G	Each	1	ZC60
Border Roll Pin				
450 x 23 x 23 (Pg. 39)	G	Each	1	323450
Twin Pin Gravel Board Clip				
150 x 50 (Pg. 39)	G	Each	1	GB2P

Size (mm) & Pg No.	Finish	Pack Type	Pack Qty	Product Code
Gravel Board Clip				
150 x 25 x 30 (Pg. 39)	G	Each	1	GB25
150 x 50 x 30 (Pg. 39)	G	Each	1 Pack	GB50



**Padbolt** - used with or without padlock for added security.

**Tee-Hinge** - available in different weights and lengths to suit most requirements. Always use a hinge at least half the width of the gate and for extra support use three hinges wherever possible.

**Suffolk Latch** - external handle & thumb latch allows the gate to be opened from the outside and inside. Available in galvanised, black and zinc.

TIMCO offers an extensive range of **SQUIRE** combination, key padlocks, chains and security bolts

**Tee-Hinges** - available in sizes from 100mm to 600mm, many in a choice of galvanised, black and zinc plate finishes.

**TIMCO gate furniture.**  
What all well dressed gates are wearing.



## TIMCO Padlocks

- Rectangular Padlocks
- Disc Padlocks
- Brass & Stainless Steel Padlocks
- Weatherproof & Combination Padlocks



Please visit [timco.co.uk](http://timco.co.uk) for more information.

  
**SQUIRE**  
*Lockmakers Since 1780*  
**Padlocks**

Squire is an eighth generation independent family-owned lock manufacturer, continues its tradition of offering high-quality, performance-led products.

**10**  
YEAR  
PERSONAL  
GUARANTEE  
*John Squire*



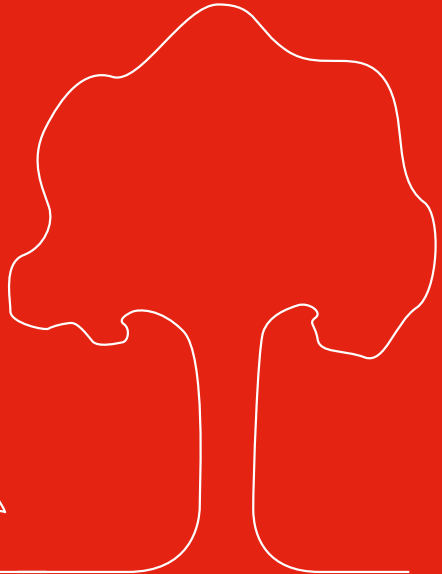


## Member of



Being a member of OPRL allows us to clearly mark the recyclability of our packaging. This allows consumers to identify and correctly recycle our packaging and print.

For example this brochure has the recycle label below.



### UK

TIMCO House,  
Green Lane, Wardle,  
Nantwich, CW5 6BJ  
Fax: 01829 261102  
Fax: 01829 261093

**sales@timco.co.uk**  
UK: **01829 261111**

**timco.co.uk**

### Ireland

Old Train Station,  
North Road,  
Monaghan, H18 YK54  
Fax: 04763539

**sales@timco.ie**  
IRE: **04763538**  
NI: **02890992305**

**timco.ie**