



# ASTROFLAME

PASSIVE FIRE STOP SYSTEMS

## Fire Stop Solutions



Get in touch with our sales and technical team for more information:

Tel: **01329 844 500**

Email: **[sales@astroflame.com](mailto:sales@astroflame.com)**

Web: **[astroflame.com](http://astroflame.com)**

Scan to view  
the full range  
of products



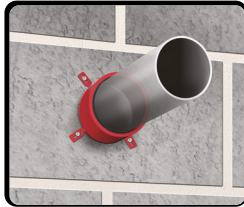
SCAN ME

## FIRE COLLAR

> Trade Name: **Astro PFP Pipe Closer**

Astro PFP Pipe Closer are designed to maintain the fire resistance of fire rated walls and floors where these are breached by continuous plastic pipes. Astro PFP Pipe Closer can be used in gypsum, masonry and concrete walls and with concrete floors. Each pipe closer consists of a Red/Silver coated circular steel shell that splits in two to fit around the service penetrations by means of a simple 'slide-lock' system.

The steel shell contains a graphite based reactive material which reacts when exposed to heat closing the openings left by the softening plastic pipe in fire. When testing pipes, one can choose not to cap (or close) the pipe, or cap the pipe inside the furnace, or outside the furnace, or on both sides. The configuration chosen depends on the intended application of the pipe and/or the installation environment. Various sizes available.



## FIRE PIPE WRAPS

> Trade Name: **Astro PFP FR Pipe Wrap**

The Astro PFP FR Pipe Wrap is designed to maintain the fire resistance of fire separating walls and floors when these are breached by plastic pipes, conduits or metal pipes with continuous combustible insulation, and may be used in drywalls, masonry or concrete walls and concrete floors.

Each pipe wrap consists of a graphite based reactive intumescent strip, which reacts to heat and closes the opening left by the softening plastic pipe or pipe insulation in a fire. The pipe wrap is installed completely around the pipes or insulation and secured with the self adhesive tab. The annular space around the pipe wrap is sealed with Astro PFP FR EX Mortar or Astro PFP FR Boards. Various sizes available.



> How to order:

T: 01329 844 500 | E: SALES@ASTROFLAME.COM

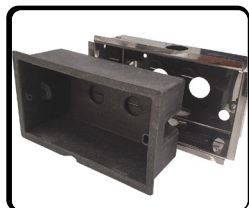
> For Data sheets, Test reports or more information:

ASTROFLAME.COM

## RAPID OUTLET BOX SYSTEM

> Trade Name: **Blaze Trap**

Blaze Trap Rapid Outlet Box System (ROBS) is a groundbreaking Passive Fire Protection product, recently winning the UK Construction Excellence National Award for Innovation. Unlike standard electrical back boxes with minimal fire resistance, Blaze Trap ROBS features a Stainless Steel Electrical Back Box with a unique, high-quality, injection-moulded intumescent liner made from exfoliated graphite. This eliminates the need for separate box outers, reducing errors in size, depth, and material selection. The intumescent liner expands under fire exposure, forming a dense carbon char that insulates the substrate and blocks airflow, cutting off combustion elements. Patented (GB2588670B) and trademarked, it includes integrated pushout fixing tabs, quick liner installation, and requires no sealants or brackets. A single size fits all cavity wall depths, lowering installation costs, requiring zero maintenance, and ensuring a long lifespan. Full traceability from manufacture to end user. Single Gang Box: 74x74x50mm | Double Gang Box: 134x74x50mm.



## FIRE RATED PUTTY PADS

> Trade Name: **Astro PFP FR Putty Seal**

Astro PFP FR Putty seal is an easy to apply fire and sound rated sealant supplied as a non-setting putty. The putty is hand workable, reusable and re-serviceable due to its non-setting properties. The putty is manufactured and supplied in different shapes and forms for different applications. *Putty Pads for sockets:* When electrical sockets and switches are installed in dry lining partitions, the original fire rating of the partition is compromised. Fitting Putty Pads will reinstate the fire rating of the partition for up to 90 minutes (depending on the partition fire rating) preventing the passage of smoke, flames, sound and air through the electrical socket. *Putty Pads for water supply boxes:* When tap water wall boxes are installed in dry lining partitions, the original fire rating of the partition is compromised. Fitting Putty Pads will reinstate the fire rating of the partition for up to 90 minutes (depending on the partition fire rating) preventing the passage of smoke, flames, sound and air through the electrical socket. Internal, external and cords available.



> How to order:

> For Data sheets, Test reports or more information:

T: 01329 844 500 | E: SALES@ASTROFLAME.COM

ASTROFLAME.COM

## SOCKET BOX INSERT

> Trade Name: **Astro FRA Socket Box Insert**

Astroflame's Socket Box Inserts, are manufactured from halogen free, low smoke, fire resistant, mineral fibre material and are designed to maintain the fire performance of partition (stud) wall constructions when penetrated by steel or plastic electrical back boxes. The insert will also provide resistance to the passage of sound and air movement.

In the event of a fire the Socket Box Inserts mineral fibre material will prevent the fire passing through the electrical back box aperture, providing effective fire resistance, for integrity (E) and insulation (I) from 30 to 120 minutes (EI30 to EI120) depending upon the wall construction.

Available in Standard Depth - 35mm deep and Extra Deep - 47mm deep.



## INTUMESCENT DUCT SLEEVES

> Trade Name: **Astro DS Low Profile Duct Sleeve**

The Astro Low Profile Duct Sleeve are a family of CE Marked fire penetration seals designed to firestop PVC ventilation ducts/pipes when installed through fire rated constructions. The unique vacuum formed intumescent material design ensures that the expansion direction of the material crushes and seals the ducting in a fire situation without the need for any additional metal sleeving. The lack of metal sleeving, not only makes installation easy, it also limits the risk of heat transfer through the structure as well as allowing compression to ensure a tight seal against fire and smoke or tight fitting against the ceiling soffit where needed. The Astro Low Profile Duct Sleeve provide fire resistance ratings for Integrity (E) and Insulation (I) for up to EI120 minutes depending on the construction. Fire Tested for both internal and external wall constructions. The Fire Sleeves are CE Marked with a European Technical Assessment. The duct sleeves are available to fit common sizes of rectangular and circular plastic ventilation ducts.



> How to order:

T: 01329 844 500 | E: SALES@ASTROFLAME.COM

> For Data sheets, Test reports or more information:

ASTROFLAME.COM



## FIRE BOARDS & COATING

### > Trade Name: **Astro PFP FR Boards**

The Astro PFP FR Board is designed to prevent the spread of fire and smoke through openings in fire rated walls and floors where openings are formed to allow the installation of multiple building services. It will also maintain the acoustic design performance in fire rated walls and floors. The Astro PFP FR Board consists of a high density stone wool core, over-coated with Astro PFP FR Coating. The top coating provides additional protection by significantly reducing the permeability of the stone wool core and preventing the passage of hot gases, thus reducing the temperature rise on the unexposed side and reducing heat conduction through the building services. 50mm or 60mm x 600 x 1200mm available.

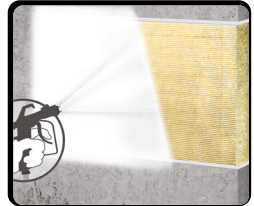
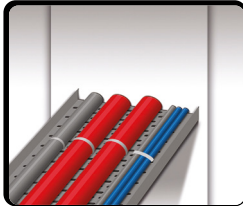
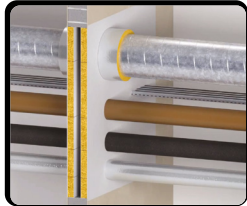
### > Trade Name: **Astro PFP FR Coating**

Astro PFP FR Coating spray grade, is an ablative sealant coating designed to enhance, seal and fire protect stonewool fibres in Astro PFP FR Boards. Available in 8 Litres.

Astro PFP FR Boards



Astro PFP FR Coating

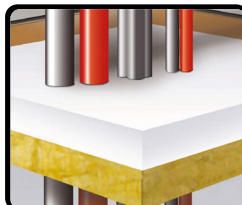


## FIRE RESISTANT MORTAR

### > Trade Name: **Astro PFP FR EX Mortar**

Astro PFP FR EX Mortar is a dry white powder consisting of inorganic compounds and perlite. When mixed with water, the compounds form a highly thermally insulating fire sealing compound to prevent the spread of fire and smoke through openings in fire rated walls and floors, including openings formed around building service penetrations.

Astro PFP FR EX Mortar will also maintain the acoustic design performance in walls and floors. Astro PFP FR EX Mortar expands approx. 1% by hydraulic action during curing ensuring a very tight seal around the service penetrations and the surrounding opening apertures. Astro PFP FR EX Mortar is easy to sand or drill. The compound dries to an off-white colour which may be painted. Available in 20 Litres.



> How to order:

T: 01329 844 500 | E: SALES@ASTROFLAME.COM

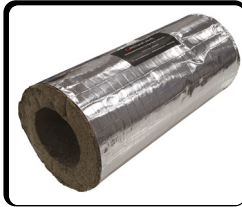
> For Data sheets, Test reports or more information:

ASTROFLAME.COM

## THERMAL FIRE PIPE SLEEVE

> Trade Name: **Astro Thermal Fire PS**

The Astro Thermal Fire PS are a range of passive fire protection penetration seals designed to firestop insulated metal and combustible plastic pipes. The Fire Sleeves offer Fire, Acoustic, Thermal and Vapour seal performance to a range of pipes passing through various wall or floor constructions. The CE Marked range are fire tested in accordance with EN 1366-3 with additional testing and assessments to BS 476 Part 20. The Astro Thermal Fire PS are manufactured from a unique, low smoke, zero halogen intumescent material. The Fire Sleeves are supplied pre-formed and ready to install to suit a variety of pipe diameters. With a nominal thickness of 25mm, the compressible intumescent sleeve is supplied wrapped in a reinforced aluminium foil allowing it to be cut down its length and retro-fitted around the pipes. This provides an effective fire, smoke and acoustic seal whilst also allowing for some thermal movement. Fire Ratings of EI30, EI60, EI90, EI120 or even up to EI240 minutes are offered depending on the construction type.

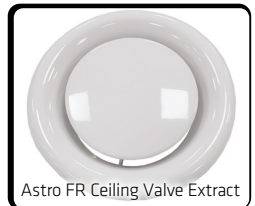


## FIRE CEILING AIR VALVES

> Trade Name: **Astro FR Ceiling Valve**

Astroflame's Fire Rated Air Valves are a unique and cost effective fire rated solution where recessed ceiling air valves are to be installed in fire rated floor/ceiling constructions. In a fire situation, the integral intumescent material rapidly expands to seal off the air valve to help maintain the fire resistance rating of the ceiling. This limits the risk of fire and heat spread throughout the building.

The Astro FR Ceiling Valve are available in all common sizes for both Extract and Supply. The Fire Rated Air Valve is installed as normal with air flow through the air valve unaffected. The product requires no maintenance after installation. The Astro FR Ceiling Valve suitable for domestic homes, as well as apartments, hotels and other multiple occupancy buildings where fire ratings exist. Various Extract and Supply types available.



Astro FR Ceiling Valve Extract

> How to order:

T: 01329 844 500 | E: SALES@ASTROFLAME.COM

> For Data sheets, Test reports or more information:

ASTROFLAME.COM

## INTUMESCENT CEILING FAN FIRESTOP

> Trade Name: **Astro Ceiling Fan Firestop**

The Astro Ceiling Fan Firestop is an intumescent penetration seal designed to firestop the hole made in a ceiling where recessed ceiling fans are installed. It has been specifically developed to provide fire protection for penetrations made in floor/ceiling systems for 100mm and 125mm ceiling fans. In a fire situation, the intumescent lining of the Ceiling Fan Firestop expands to seal off the opening in the ceiling, effectively firestopping the ceiling layer so that the overall fire resistance rating of the floor/ceiling system is maintained. Recessed ceiling fans are widely used in both domestic and commercial buildings. Once a hole is made in the ceiling for a fan, the integrity of the construction and its ability to perform in a fire is reduced significantly. The penetration must be fire stopped in order to reinstate the original fire rating of the ceiling/floor construction as required within Building Regulations. 100 or 125mm diameter sizes available.

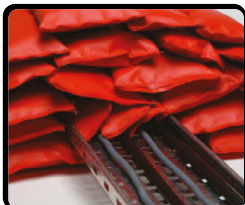


## FIRE PILLOWS

> Trade Name: **Astro X Series Pillow**

X Series Fire Pillows are designed to provide an effective fire barrier, on a temporary or permanent basis, for services which are subject to frequent changes or replacement. The fire pillows consist of a waterproof glass cloth bag containing organic fillers and intumescent additives. Pillows can be added, removed or rearranged in an aperture to accommodate to the needs of the situation and have been tested with metallic pipes, cables, cable bunches, cable trays and cable ladders.

Tested in block wall, concrete and masonry walls and concrete floors up to 1m<sup>2</sup> area and suitable for indoor and outdoor locations pillows remain flexible between -5°C to +40°C. Three sizes of X Series fire pillow are available; please ensure that the correct pillow is installed to suit the opening size. \*For specific details please refer to the test certification.



> How to order:

T: 01329 844 500 | E: SALES@ASTROFLAME.COM

> For Data sheets, Test reports or more information:

ASTROFLAME.COM



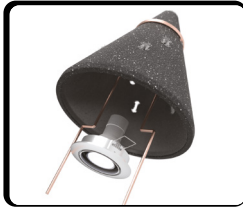
## DOWNLIGHTER COVERS OR FIRE RATED LOFT CONES

### > Trade Name: **Astro DL Cover**

Downlighters in ceilings are widely used in commercial buildings. In a fire situation the cover expands internally to fill all the available space with a highly insulating fire resistant char. Thus, the fire is unable to penetrate the hole and the cover is able to give additional insulation protection to the ceiling void to reduce the chance of heat build up and ignition of flammable materials such as accumulated dust and insulation. Various sizes available.

### > Trade Name: **Astro LC Loft Cone**

Designed to provide a fire resistant solution and overcome thermal and vapour transmission into loft voids when installing recessed lights. The 'F-capped' Approved Loft Cone maintains sufficient space around the fitting to allow continuous insulation to be laid directly over light fittings minimising overheating or fire risk.



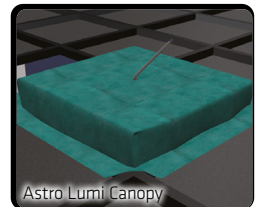
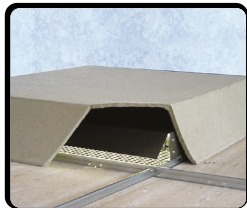
## LUMINAIRE COVER OR CANOPY

### > Trade Name: **Astro Lumi Cover**

The Astro Lumi Covers are fire rated covers or fire canopies designed to fire rate recessed luminaire or fluorescent module fixtures and reinstate the performance of ceilings when penetrated by recessed lights. They help to maintain the fire protection performance of the element protected by the ceiling – preventing or delaying the spread of fire. Various sizes available.

### > Trade Name: **Astro Lumi Canopy**

Astroflame Luminaire Canopies stop the passage of fire and smoke, for up to 60 minutes, through luminaire light fittings in a fire rated ceiling. Without the fire rated canopy in place, fire and smoke will penetrate the recessed light fitting in seconds and spread into the void or room above endangering lives and property. The fire canopies are easy to fit from either side of the ceiling and need no additional supports. They can also be easily removed and replaced for lighting maintenance. Various sizes available.



> How to order:

T: 01329 844 500 | E: SALES@ASTROFLAME.COM

> For Data sheets, Test reports or more information:

ASTROFLAME.COM



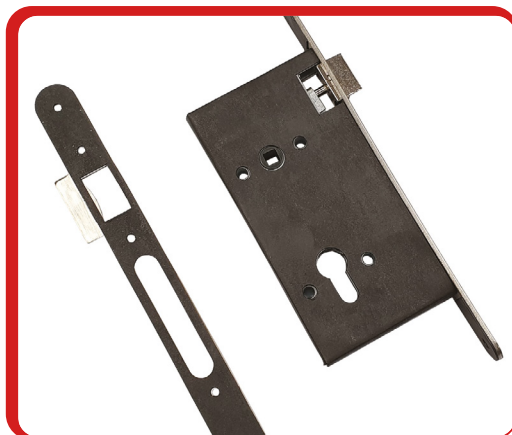
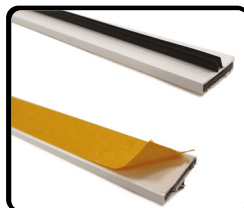
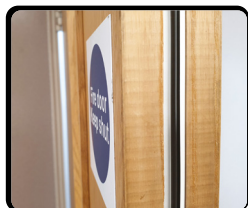
## INTUMESCENT FIRE SEALS

> Trade Name: **Astro Strip**

Intumescent fire and smoke seals for fire door assemblies. An intumescent graphite based fire seal contained within a PVC sleeve for fitting into a rebate to either the leaves or the frame of a door. In the event of a fire the seal expands (intumesces) to many times its original volume and seals the gap around the door to provide a safe and effective barrier against the passage of fire, smoke and hot gases.

Astroflame Intumescent Fire Seals are available with or without a cold smoke seal in the form of a nylon pile. Astroflame smoke seals provide a permanent barrier to smoke - particularly important as smoke fumes travel faster and further than the fire itself.

All Astro fire and smoke seals are supplied with a self-adhesive backing tape as standard to facilitate quick and easy fitting. Fire and smoke seals are available in a choice of colours to suit your requirements or blend with decor.



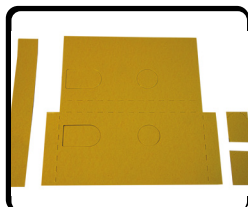
## IRONMONGERY PROTECTION

> Trade Name: **Astro FlexiFire**

Astro FlexiFire is a graphite-based intumescent material that offers high levels of expansion and insulation, preventing heat transfer on rebated hardware. All ironmongery installed on a fire door must be fitted without compromising the integrity of the complete fire door assembly. This is of particular importance where ironmongery is rebated into the doorset such as hinges, locks, latches.

Astro FlexiFire is an ultra thin and flexible high performance graphite based intumescent sheet. At 0.8mm Astro FlexiFire offers high levels of expansion and insulation preventing heat transfer on ironmongery rebated into timber doorsets.

Product Availability: Hinge Pads square or radius types, Universal BS Sashlock Kit, Universal Deadlock Kit, Universal BS Din Lock Kit, FB1/FB2 Deadlock Kit C/W Strike Plate, Universal Tubular Latch Kit, Single Door Packs, Intumescent Sheets and Flush Bolt Kit.



> How to order:

T: 01329 844 500 | E: SALES@ASTROFLAME.COM

> For Data sheets, Test reports or more information:

ASTROFLAME.COM

## IRONMONGERY PROTECTION

> Trade Name: **Interdens®**

All ironmongery installed on a fire door must be fitted without compromising the integrity of the complete fire door assembly. This is of particular importance where ironmongery is rebated into the doorset such as hinges, locks, latches and concealed door closers. Interdens® is a phosphate based fire protection that has gained a first-class reputation through the outstanding expanding capabilities and the excellent insulating properties of the resultant foam. Foam expansion occurs without pressure. Interdens® has been tested extensively to protect rebated ironmongery in fire doors for over 30 years, this includes testing to both BS476 & EN1634 to 30 & 60 minute fire rating. Typically 1mm material is used for 30 minute applications and 2mm material for 60 minutes however always refer to the manufacturers test evidence or Certifire certification for reference. Product range: Hinge Pads, Universal BS Sashlock Kit, Universal Deadlock Kit, Universal Din Lock Kit, FB1/FB2 Deadlock Kit, Universal Tubular Latch Kit and Flush Bolt Kit.



## FIRE RATED FRAME FOAM

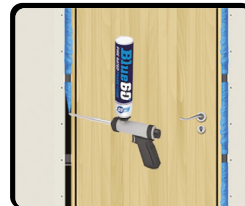
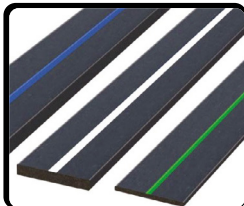
> Trade Name: **Blue 60**

High quality PU foam recommended for sealing applications where fire resistance is required.

Blue 60 is a specially formulated expanding foam that must be used in conjunction with Blue 60 fire rated packers that gives up to 60 minutes fire protection to timber doorsets without the use of additional mastics or sealants.

Blue 60 PU Foam is a single component, moisture curing, self expanding, ready to use polyurethane foam with propellants which are completely harmless to the ozone layer.

It has a fire rating of up to 60 minutes in Timber Doorsets configuration.



> How to order:

T: 01329 844 500 | E: SALES@ASTROFLAME.COM

> For Data sheets, Test reports or more information:

ASTROFLAME.COM

## ACOUSTIC RATED DOOR BOTTOM SEALS - REBATED OR SURFACE MOUNTED

### > Trade Name: **Astro ASDB/SM Seals**

Surface Mounted door bottom seal - drop down type. Aluminium body with rubber coextruded seal and carrier.

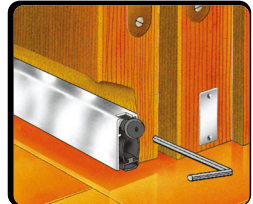
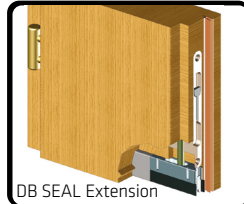
### > Trade Name: **Astro ASDB and ASDBX Seals**

An automatic door bottom seal which is spring loaded to lift clear of the floor as soon as the door leaf is opened by a few millimetres. An acoustically designed seal for rebated applications.

### > Trade Name: **DB Seal Extension**

The DB SEAL Extension works as an extender with the Astro DB Seal Plus drop down seal. 10mm maximum drop and the seal is manually lowered on the handle side.

Astro ASDB/SM Seal  
(Surface Mounted)



## FIRE RATED LETTERBOX

### > Trade Name: **Astro Eco Telescopic Letter Box FX**

The Astro eco telescopic letterbox system range is specifically designed to increase the safety and security of occupants against fire and is particularly suited to multiple occupancy residential buildings.

The Astro eco telescopic letterbox is a stylish, ABS framed, telescopic letterbox with metal flaps fitted with a high performance intumescent liner around the telescopic sleeve section.

The letterbox flaps open to 180°. Acoustic and thermal performance features include brush pile draught excluders, integral sound dampening bumpers and a fully sealed backplate.

Available in various sizes and finishes.



> How to order:

T: 01329 844 500 | E: SALES@ASTROFLAME.COM

> For Data sheets, Test reports or more information:

ASTROFLAME.COM

## INTUMESCENT FIRE GRILLES

> Trade Name: **AstroGrille**

A durable ventilation grille which is easily mounted in solid timber fire doors & solid block walls, and can provide in excess of 1/2 or 1 hour fire protection. Suitable for fitting up to 1,000mm (1m) from floor level. The top of the grille should not be higher than 1000mm from the floor. The design allows a free area of 80% approximately. All square and rectangular grilles are available to suit 30 minute or 60 minute on previously fire rated applications. Please note the fire grilles is tested with a Steel face Plate (Astro Plates) either side.

> Trade Name: **Astro Plates**

Astroflame Face Plate Series presents a Mild Steel Louvered Grilles designed to satisfy all types of air transfer application in offices, shops, schools, hospitals and many other commercial projects.

A huge variety of sized AstroGrilles and Astro Plates for more information go to: [www.astroflame.com](http://www.astroflame.com)



## INTUMESCENT MASTIC

> Trade Name: **Astro INTU Mastic**

Astro Intu Mastic is a water based acrylic sealant used to reinstate the fire resistance of wall and floor constructions in linear joints and where apertures are penetrated by multiple services. Astro Intu Mastic Fire Resistant Sealant has been developed utilising specialist polymer technologies allowing it to be tested and Certified to internationally recognised standards, including CE, UKCA marking and UL Listings.

Astro Intu Mastic Fire Resistant has been tested and Certified as part the Astroflame Fire Stopping range. The Astro Intu Mastic system can be installed across a variety services and substrates including, Flexible and Rigid Walls, Rigid Floors, Multi-Service penetrations, Blank Openings, Head of Walls, Astro Batt. The Astro Intu Mastic Comes in Three Colours - White, Brown & Grey in Both 310ml Cartridge & 600ml Foils. \*For specific details please refer to the test certification.



## HIGH PRESSURE EXPANSION SEALANT

> Trade Name: **Astro HPE Sealant**

Astro HPE Sealant is an acrylic based graphite sealant used to reinstate the fire resistance performance of wall and floor constructions where they have been provided for the penetration of single or multiple services, to form penetration seals where gaps are present.

Astro HPE Sealant expands upon contact with heat, also known as intumescent or reactive material Astro HPE Sealant is supplied within 310ml cartridges and 600ml foils. The sealant is gunned or trowelled into the annular space in or between the separating element/elements to a specific depth utilising backing materials.

\*For specific details please refer to the test certification.



> How to order:

T: 01329 844 500 | E: [SALES@ASTROFLAME.COM](mailto:SALES@ASTROFLAME.COM)

> For Data sheets, Test reports or more information:

[ASTROFLAME.COM](http://ASTROFLAME.COM)



## ANTI-FINGER TRAPPING GUARD

> Trade Name: **Astro FingerKeeper Commercial Front**

The Astro FingerKeeper Commercial device is a guard that prevents door finger trapping accidents. By totally covering the gap that is created on the hinge side of a door, in the open position, it prevents finger trapping injuries. Ideal for use in Schools, Day Care Centres, Nurseries, hospitals or any internal doors that create risk to the Public. The device is designed to create the safest working environment and avoid potentially costly and disruptive injury claims. The device is fully recyclable at end of life.

The device is extremely simple to install and has a long-life expectancy. With its screw fix design, it can be easily removed and refitted if any remedial works are needing to be completed. Various sizes and colours available.

For total protection from finger trapping injuries in doors see also the rear hinge guard - Finger Keeper Rearguard.



## PVC FINGER GUARD FOR DOORS

> Trade Name: **Astro Finger Saver Elite Front**

Use the Astro Finger Saver Elite Front door safety product to prevent finger trapping accidents in doors, while allowing the door to operate normally. A simple, cost effective device that covers the gap created when doors are open. Also it prevents fingers being trapped on the hinge side of the door.

Astro Finger Saver Elite is ideal for nurseries, schools, residential care homes and the majority of domestic and commercial applications. The slimline folding design only protrudes 30mm from the door face in a closed position. Astro Finger Saver Elite front can be fitted to most types of door including wood, metal and UPVC. It is very simple to install and can be easily removed or refitted for door painting or maintenance purposes. Please note if you are also fitting the Slim Rear Finger Guard, the rear device must be fitted before this front device.

For complete protection add the Slim Rear PVC Finger Guard.



> How to order:

T: 01329 844 500 | E: SALES@ASTROFLAME.COM

> For Data sheets, Test reports or more information:

ASTROFLAME.COM

## HEAVY DUTY HINGE GUARD

> Trade Name: **Astro Finger Keeper Industrial TPV**

Finger entrapment in doors can result in serious injuries that have long term effects and may require significant hospital treatment. Preventing such injuries is therefore important. Finger trap protection should be installed in all hinged or pivoted door situations, where users can potentially get fingers caught between the door and the frame. All public areas including shops, hotels and fitness centres should be reviewed for potential risks.

Areas of particular concern include: Schools or child care centres. Children suffer a disproportionate number of finger entrapment injuries because of their lack of understanding of the dangers presented by doors, young children may put their fingers into the gap between a door and its frame without any awareness of the possible consequences. This heavy duty finger-pinch protection device (anti-finger-trapping hinge guard). Manufactured from a TPV material fitted in an Anodised Aluminium carrier, that is supplied with self drilling screws and 2 x push-in screw concealing strips to match.



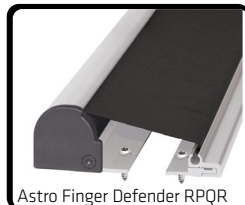
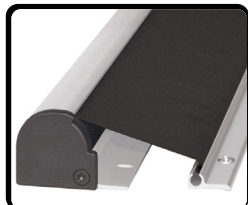
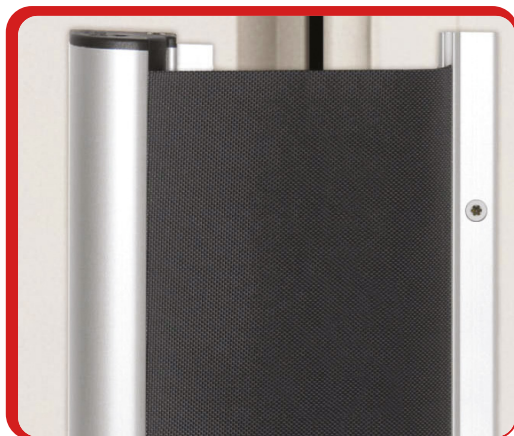
## ROLLER TYPE FINGER GUARD

> Trade Name: **Astro Finger Defender RP**

A high quality finger guard with resilient blind. When the door opens the roller blind extends to prevent fingers entering the cavity formed between the edge of the door and door frame. A hard wearing synthetic fibre fabric which is mountable, removable, washable and also fire retardant B1 treated. The Astro Finger Defender RP comes with 4 concealed housing fastening screws and 4 visible fabric profile screws.

> Trade Name: **Astro Finger Defender RPQR - Quick Release Roller Blind Finger Guard**

A quick release system is a high quality finger guard with resilient blind. When the door opens the roller blind extends to prevent fingers entering the cavity formed between the edge of the door and door frame. A hard wearing synthetic fibre fabric which is mountable, removable, washable and also fire retardant B1 treated. With its quick release system on one side of the device which allows for inspection and maintenance of hinges, drop seals and fire seals on a fire door.



> How to order:

T: 01329 844 500 | E: SALES@ASTROFLAME.COM

> For Data sheets, Test reports or more information:

ASTROFLAME.COM

## FINGER DEFENDER RANGE

### > Trade Name: **Astro Finger Defender**

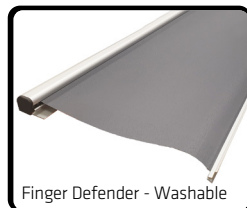
A durable, high quality finger guard with discreet styling, suitable for most single and double-action doors, including automated doors. A resilient 'roller blind' style mechanism prevents fingers from entering the cavity formed between the edge of the door and door frame. Various sizes in an SAA, White, Dark Bronze and Black colours.

### > Trade Name: **Astro Finger Defender - Glass**

A high quality finger guard designed exclusively for use with glass doors. It uses a resilient blind mounted in a robust aluminium housing that attaches to the door frame.

### > Trade Name: **Astro Finger Defender - Washable**

A Washable is ideal for hospitals, kitchens and other clean areas. Perfect for sterile environments as it can be steamed cleaned. A high quality finger guard ideal for use with external doors subject to weathering forces.



## SAFETY PRODUCTS

### > Trade Name: **Astro Corner Guard Commercial**

The padded guard reduces impacts and prevents more serious injuries when there is a collision. This tough and durable safety cushioning is designed for indoor use in normal habitable conditions (frost free, dry, no prolonged direct sunlight). Various colours available.

### > Trade Name: **Astro Window Restrictor**

A window restrictor protects babies and children from accidental falls via windows or balcony doors opened to allow natural ventilation. It also acts as a security measure to deter opportunist intruders and to restrict what can be passed via the window / door gap.



> How to order:

T: 01329 844 500 | E: SALES@ASTROFLAME.COM

> For Data sheets, Test reports or more information:

ASTROFLAME.COM



## INSTALLATION

We have technical representatives who provide assistance in the selection and specification of the products in this brochure and should be consulted for exact installation and product suitability. Ensure an early engagement with ourselves, designers, main contractor and specialist installers before any installation. Other trades and/or manufacturers may need to be consulted. For in-depth information, specification and technical advice please call our Head Office on tel **01329 844 500** or email **sales@astroflame.com**

## MAINTENANCE

All interested parties, designer, specifier, main contractor and specialist installers should provide access to allow the fire stopping seals to be regularly inspected and maintained, as well as records kept of such maintenance at minimum periods of 12 months, as required by the Regulatory Reform Order, and repaired if necessary. Reference should be made to ASFP TGD 17 – Code of Practice for the Installation and Inspection of Fire Stopping.

## COMPETENCY

It is vital that those entrusted to design or install a fire stopping product have the necessary levels of competence to undertake the task professionally and thoroughly. The level of competency required will be commensurate with the expected complexity of the building. All designers must eliminate, reduce or control foreseeable risks that may arise during installation, construction or maintenance when preparing or modifying designs. Clients should ensure that the principal designer and principal contractor carry out their duties under CDM regulations. The ASFP foundation course in passive fire protection provides essential knowledge as part of demonstrating competency and understanding in this key fire protection specialism.

## ADDITIONAL NOTES

For further information on installation requirements please refer to the manufacturer data to ensure the compatibility of these products, if in doubt please contact the technical team on: tel **01329 844 500** or email **sales@astroflame.com**



UK Office: Astroflame (Fireseals) Ltd, Unit 8, The I.O. Centre,  
 Stephenson Road, Segensworth, Fareham, England PO15 5RU

T **01329 844 500**  
 E **sales@astroflame.com**  
 W **astroflame.com**

**18TH FEBRUARY 2025** Information correct at the time of going to print

Scan to view  
 the full range  
 of products



SCAN ME

AS PART OF OUR POLICY OF ONGOING IMPROVEMENTS, WE RESERVE THE RIGHT TO MODIFY, ALTER OR CHANGE PRODUCT SPECIFICATIONS WITHOUT GIVING NOTICE. PRODUCT ILLUSTRATIONS ARE REPRESENTATIONS ONLY. ALL INFORMATION PROVIDED IS FOR GUIDANCE ONLY, AND AS ASTROFLAME (FIRE SEALS) LTD HAS NO CONTROL OVER THE SPECIFIC APPLICATION OR INSTALLATION METHODS OF THE PRODUCTS, OR OF THE PREVAILING SITE CONDITIONS, NO WARRANTIES EXPRESSED OR IMPLIED ARE INTENDED TO BE GIVEN AS TO THE ACTUAL PERFORMANCE OF THE PRODUCTS MENTIONED OR REFERRED TO, AND NO LIABILITY WHATSOEVER WILL BE ACCEPTED FOR ANY LOSS, DAMAGE OR INJURY ARISING FROM THE USE OF THE INFORMATION GIVEN OF PRODUCTS MENTIONED OR REFERRED TO HEREIN.

INFORMATION PROVIDED IS TO THE BEST OF OUR KNOWLEDGE TRUE AND ACCURATE AND BASED UPON CURRENT TEST DATA AND PRODUCT SPECIFICATION FROM THIRD PARTIES AND IS SUPPLIED FOR YOUR GUIDANCE ONLY. CUSTOMERS SHOULD SATISFY THEMSELVES TO THE SUITABILITY OF THE PRODUCT BASED ON THE PRODUCTS LIMITATION OF APPLICATIONS AND THAT THE PRODUCT IS FIT FOR PURPOSE FOR THEIR INTENDED USE AND NO GUARANTEE IS GIVEN OR IMPLIED SINCE THE CONDITIONS OF ACTUAL USE ARE BEYOND OUR CONTROL. ASTROFLAME (FIRE SEALS) LTD, DISCLAIM ANY LIABILITY FOR LOSS, DAMAGE OR OTHER EXPENSE ARISING FROM THE USE OF INFORMATION, DATA OR PRODUCTS MENTIONED OR REFERRED TO BY OURSELVES AND RESERVE THE RIGHT TO CHANGE ANY DETAILS OR SPECIFICATIONS WITHOUT NOTICE. IF YOU ARE IN ANY DOUBT AS TO THE SUITABILITY OF A PRODUCT FOR YOUR INTENDED APPLICATION PLEASE CONTACT OUR TECHNICAL TEAM ON 01329 844500 OR EMAIL **SALES@ASTROFLAME.COM** AND WE WILL CONTACT YOU.