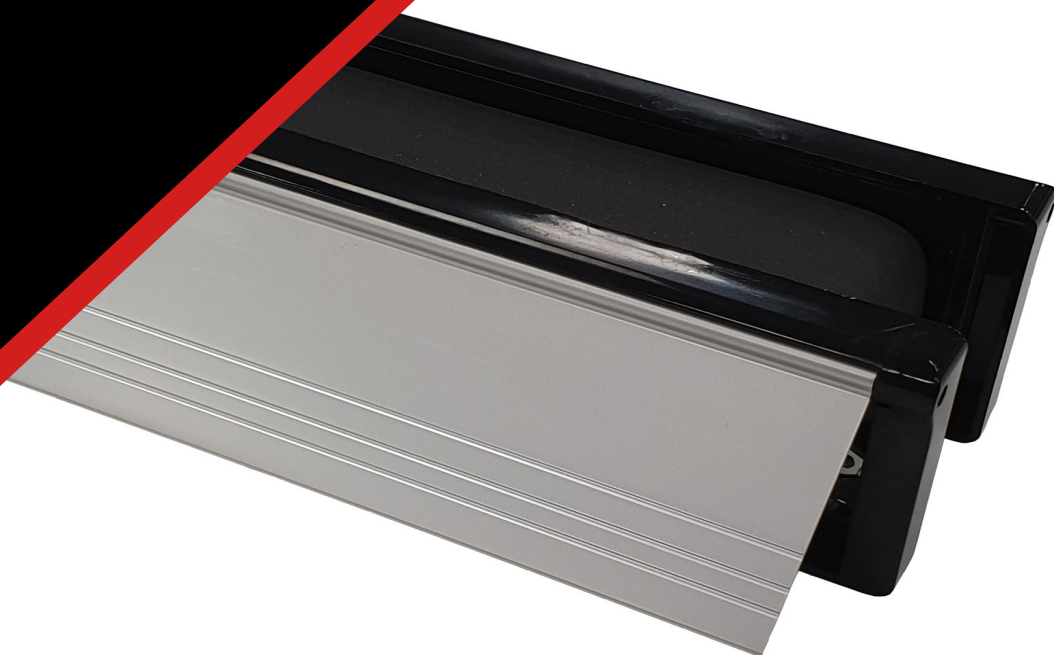


Product Data Sheet

Astro Eco Telescopic Letter Box FX (Fire & Smoke)

Revision 11 - 1st April 2025



Astro Eco Telescopic Letter Box FX (Fire & Smoke)

Intumescent Fire Rated Telescopic Letterbox System

- Adjustable Telescopic fitting.
- Wide range of letter plate finishes.
- 10" Standard or 12" Commercial sizes.
- Tested in accordance with BS 476 part 20 & 22: 1987 (30 minute rated).
- Acoustic tested achieving 32dB Rw.
- Tested to BS EN 13724 Clause 6.6.5.
- Tested in accordance with EN 1634-1: 2004 (30 minute rated).
- Smoke tested in accordance with BS EN 1634-3: 2004.



Product Description

The Astro eco telescopic letterbox system range is specifically designed to increase the safety and security of occupants against fire and is particularly suited to multiple occupancy residential buildings.

The Astro eco telescopic letterbox is a stylish, ABS framed, telescopic letterbox with metal flaps fitted with a high performance intumescent liner around the telescopic sleeve section.

The letterbox flaps open to 180°.

Acoustic and thermal performance features include brush pile draught excluders, integral sound dampening bumpers and a fully sealed backplate.

During a fire the intumescent liner rapidly expands and seals off the letterbox opening, preventing the spread of fire and smoke whilst maintaining the integrity of the fire door assembly.

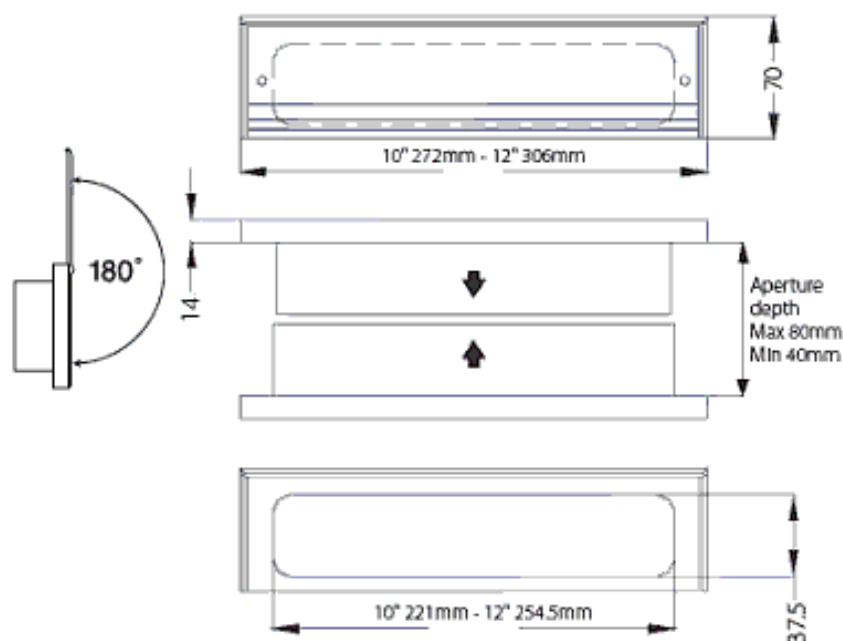
Available in 10" Standard (272mm x 70mm) and 12" Commercial (306mm x 70mm) sizes.

Cut out required is 241mm x 57mm for standard size letterbox and 274mm x 57mm for commercial size letterbox.

Product Availability

Both 10" and 12" sizes have a black ABS frame, except the SS which has a silver frame. The letterboxes are available in Satin Aluminium, Chrome Plated, Stainless Steel, Polished Silver, Polished Brass or Polished Gold letter plate flaps.

Smoke Testing was conducted to BS EN 1634-3: 2004 smoke control tests for door and shutter assemblies, openable windows and elements of building hardware – Part 3: Smoke control test for door and shutter assemblies.



Product Availability

Availability for the Astroflame range of Intumescent Fire Rated Telescopic Letter Box FX Systems:

Intumescent Fire Rated Telescopic Letterbox System FX

Product Code	Product Description	Dimensions	Colour
AFTLBFX/30SAA	30 Minute Fire / Smoke	272 x 70mm	Satin Anodised Aluminium
AFTLBFX/30PC	30 Minute Fire / Smoke	272 x 70mm	Chrome Plated
AFTLBFX/30SS	30 Minute Fire / Smoke	272 x 70mm	Stainless Steel
AFTLBFX/30PB	30 Minute Fire / Smoke	272 x 70mm	Polished Brass
AFTLBFX/30PA	30 Minute Fire / Smoke	272 x 70mm	Polished Silver (CC)
AFTLBFX/30GA	30 Minute Fire / Smoke	272 x 70mm	Polished Gold (CB)
AFTLBFXC/30SAA	30 Minute Fire / Smoke	306mm x 70mm	Satin Anodised Aluminium
AFTLBFXC/30PC	30 Minute Fire / Smoke	306mm x 70mm	Chrome Plated
AFTLBFXC/30SS	30 Minute Fire / Smoke	306mm x 70mm	Stainless Steel
AFTLBFXC/30PB	30 Minute Fire / Smoke	306mm x 70mm	Polished Brass
AFTLBFXC/30PA	30 Minute Fire / Smoke	306mm x 70mm	Polished Silver (CC)
AFTLBFXC/30GA	30 Minute Fire / Smoke	306mm x 70mm	Polished Gold (CB)

Colour / Size reference			
10" Intumescent Letter Boxes		12" Intumescent Letter Boxes	
Satin Anodised Aluminium (SAA) - Black frame		Satin Anodised Aluminium (SAA) - Black frame	
Polished Silver (contract chrome effect) - Black frame		Polished Silver (contract chrome effect) - Black frame	
Polished Gold (contract brass effect) - Black frame		Polished Gold (contract brass effect) - Black frame	
Chrome - Black frame		Chrome - Black frame	
Stainless Steel - Silver frame		Stainless Steel - Silver frame	
Polished Brass - Black frame		Polished Brass - Black frame	

To Order & Specify

Please contact us and quote the following information -

Quantity / Product Code / Product Description / Size / Colour

Typical example:- 18 / AFTLBFX/30SAA / 30 Minute Fire - Smoke / 272 x 70mm / Satin Anodised Aluminium

>> Tel: [01329 844 500](tel:01329844500) or >> Email: sales@astroflame.com

Installation

We have technical representatives who provide assistance in the selection and specification of the products on this site and should be consulted for exact installation and product suitability. Ensure an early engagement with ourselves, designers, main contractor and specialist installers before any installation. Other trades and/or manufacturers may need to be consulted. For in-depth information, specification and technical advice please call our Head Office on tel [01329 844 500](tel:01329844500) or email sales@astroflame.com

Maintenance

All interested parties, designer, specifier, main contractor and specialist installers should provide access to allow the fire stopping seals to be regularly inspected and maintained, as well as records kept of such maintenance at minimum periods of 12 months, as required by the Regulatory Reform Order, and repaired if necessary. Reference should be made to ASFP TGD 17 – Code of Practice for the Installation and Inspection of Fire Stopping.

Competency

It is vital that those entrusted to design or install a fire stopping product have the necessary levels of competence to undertake the task professionally and thoroughly. The level of competency required will be commensurate with the expected complexity of the building. All designers must eliminate, reduce or control foreseeable risks that may arise during installation, construction or maintenance when preparing or modifying designs. Clients should ensure that the principal designer and principal contractor carry out their duties under CDM regulations. The ASFP foundation course in passive fire protection provides essential knowledge as part of demonstrating competency and understanding in this key fire protection specialism.

Additional Notes

Each fire door and hardware component will have its own test evidence. It is the responsibility of the purchaser to ensure that the product is fully compliant with the relevant test evidence, if in doubt please contact the technical team on: tel [01329 844 500](tel:01329 844 500) or email sales@astroflame.com

Health and Safety

For further information on health and safety requirements please contact the technical team on: tel [01329 844 500](tel:01329 844 500) or email sales@astroflame.com

As part of our policy of ongoing improvements, we reserve the right to modify, alter or change product specifications without giving notice. Product illustrations are representations only. All information contained in this document is provided for guidance only, and as ASTROFLAME (FIRE SEALS) LTD has no control over the specific application or installation methods of the products, or of the prevailing site conditions, no warranties expressed or implied are intended to be given as to the actual performance of the products mentioned or referred to, and no liability whatsoever will be accepted for any loss, damage or injury arising from the use of the information given of products mentioned or referred to herein.

The above information to the best of our knowledge is true and accurate and based upon current test data and is supplied for your guidance only. Customers should satisfy themselves to the suitability of the product based on the products limitation of applications and that the product is fit for purpose for their intended use and no guarantee is given or implied since the conditions of actual use are beyond our control. ASTROFLAME (FIRE SEALS) LTD, disclaim any liability for loss, damage or other expense arising from the use of information, data or products mentioned or referred to and reserve the right to change any details or specifications without notice. If you are in any doubt as to the suitability of this product for your intended application please contact our technical team on 01329 844500 or email sales@astroflame.com and we will contact you.