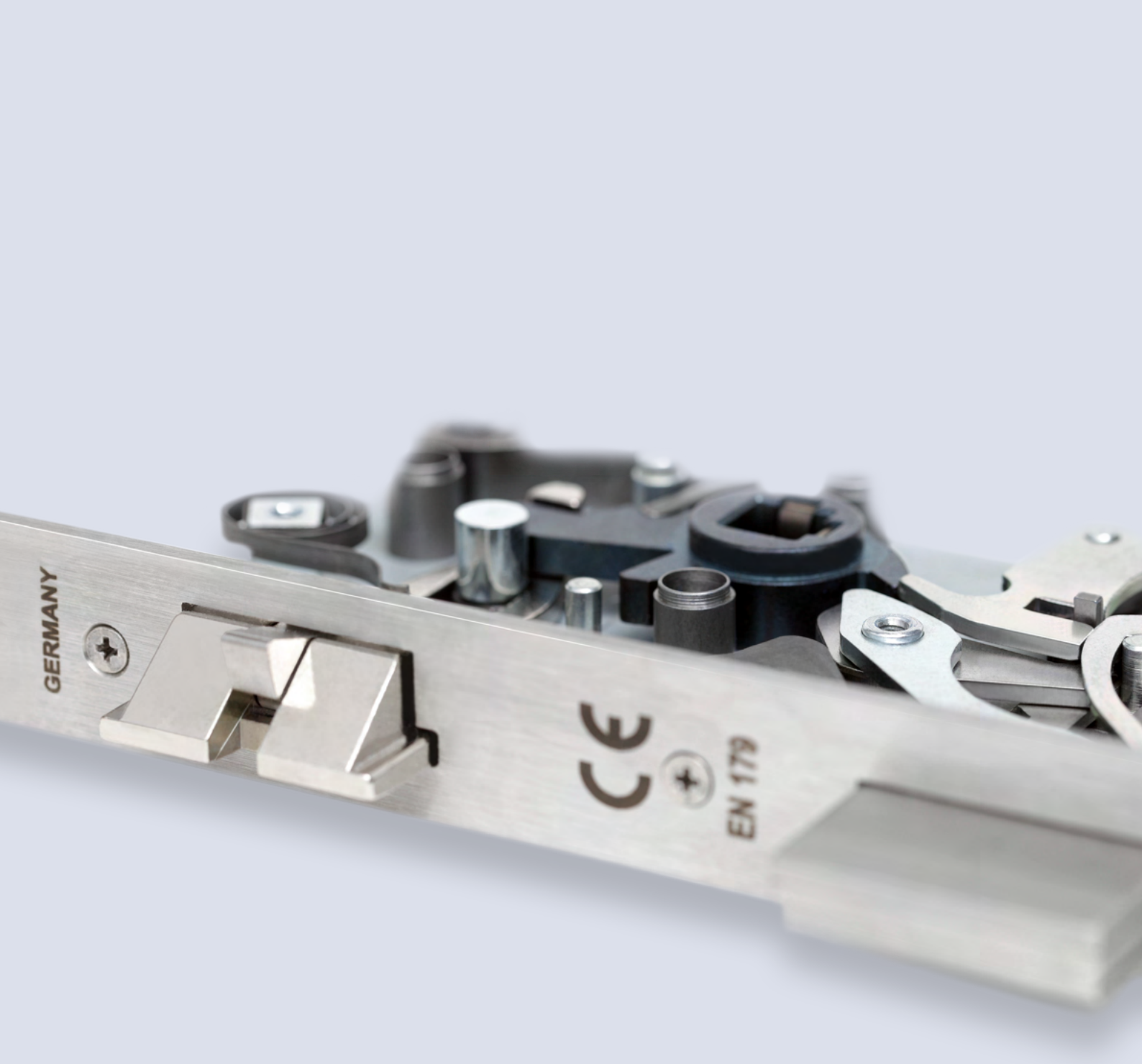


High Quality Locks

Made in Germany



About CES

Made in Germany - made by CES	6
Certificates & Product Declaration	7
Our certified products	8
Features	9
Our product highlights	10

Product range

Fire rated locks	13
Locks for timber doors	25
Locks for narrow stile metal doors	31
Locks for special applications	35
Striking plates	
Overview “Which striking plate fits which lock?”	47

Useful Information

Pictograms	55
Explanation of DIN direction	56



MADE IN 
GERMANY

Product list

Fire rated locks

fully tested and certified

9100	Mortice sashlock for single-leaf fire-rated doors	14
9100SP	Mortice sashlock with anti-thrust latch for single-leaf fire-rated doors	15
9100F	Mortice nightlatch-lock for single-leaf fire-rated doors	16
9100FL	Mortice latch-lock for single-leaf fire-rated doors	17
9100F-SP	Mortice nightlatch-lock with anti-thrust latch for single-leaf fire-rated doors	18
9100R	Mortice deadlock for single-leaf fire-rated doors	19
9100WC	Mortice bathroom-lock for single-leaf fire-rated doors	20
9100E	Mortice escape-lock with panic-function E for single-leaf fire-rated doors	21
9100E-SP	Mortice escape-lock with anti-thrust latch for single-leaf fire-rated doors	22

Locks for timber doors

334	DIN sashlock	36
390	DIN bathroom-lock	36
334SL	DIN sashlock with bushed follower	36
390SL	DIN bathroom-lock with bushed follower	36
300-01	DIN latch-lock	37
300-01SL	DIN latch-lock with bushed follower	37
2500	Mortice latch-lock with small lock case	38
2730	Mortice deadlock with small lock case	39
2700	Mortice bathroom lock with small lock case	39

Locks for narrow stile metal doors

5434	Mortice lock with transmission bar	56
5834	Mortice lock with transmission bar, medium version	56
5630	Mortice lock with roller-latch	57

5530	Mortice deadlock	57
------	------------------	----

Locks for special applications

4530	Swing door lock with roller-latch with large lock case	42
4590	Swing door lock with roller-latch with large lock case	42
4700	Swing door lock with roller-latch with small lock case	43
4730	Swing door lock with roller-latch with small lock case	44
4790	Swing door lock with roller-latch with small lock case	44
5530N	Sliding door lock with compass-bolt	45
5590	Sliding door lock with compass-bolt	45
5830	Sliding door lock with hook-latch	46
5800	Sliding door lock with hook-latch	46
8030	Mortice lock with 3 bolts without transmission bar	51
8034	Mortice lock with 3 bolts with transmission bar	51
8230	Mortice lock for radiation shielding doors without transmission bar	52
8234	Mortice lock for radiation shielding doors with transmission bar	52
9003	Sliding door lock for operating theatres with shoot bolt guide behind the forend	53
9004	Sliding door lock for operating theatres with shoot bolt guide at backset	53
9005	Sliding door lock for operating theatres with shoot bolt guide behind the forend	53
9006	Sliding door locks for operating theatres with shoot bolt guide at backset	53

Striking plates

	Overview “Which striking plate fits which lock?”	70
0400	Angular striking plate for rebated doors	71
0402	Angular striking plate for rebated doors	71
0433	Angular striking plate for rebated doors	72
0439	Angular striking plate for rebated doors	71
0445	Angular striking plate for rebated doors	73
0504	Flat striking plate for flush doors	73

0504-11	Flat striking plate for flush doors	73
0504-16	Flat striking plate for flush doors	73
0507	Striking plate	74
0508	Striking plate	74
0510	Striking plate	75
0511	Striking plate	75
0512	Striking plate	76
0513	Striking plate	76
0514	Striking plate	76
0518	Flat striking plate for flush doors	72
0522	Flat striking plate for flush doors	77
0522-16	Flat striking plate for flush doors	77
0522-17	Flat striking plate for flush doors	77
0522-18	Flat striking plate for flush doors	77
0590	Flat striking plate	77
2524	Striking plate	56
5729	Striking plate	56
5730	Striking plate	57



About CES

Made in Germany – made by CES

Safety and quality made in Germany – this is what the locking and access control systems produced by C.Ed. Schulte GmbH, known internationally as CES, stand for. The family-run business was founded in Velbert, near Düsseldorf, Germany, in 1840. And here, at the heart of German lock and security technology manufacturing, CES product developers and engineers today are still working towards continuously improving locks and locking solutions, and thus meeting the challenges of the digital world. The Federal Chancellery in Berlin, the Elbphilharmonie concert halls in Hamburg, the airport in Ankara and the Burj Khalifa in Dubai – CES expertise is in all of these buildings.

A lock for every need

For every building there is the right lock and the right locking solution. Where there are many people with different access authorisations, the electronic locking systems made by CES are particularly suitable.

But also the highly secure mechanical CES locking systems and cylinders, which are able to realise complex locking plans, are in demand by commercial and municipal property developers.

Furthermore, the CES product range includes a selection of mortice locks for the high-end contract business, for swing or sliding doors – and for fire doors. Fire-protection locks in particular must meet the highest standards of safety and quality. CES products are certified and meet the requirements of the European standard EN 12209.

As well as safety, design also plays an important role in mortise locks. Be they matt or shiny, brass, burnished or stainless steel: the in-house electroplating plant is able to customise lock cases, forends and striking plates in line with customer requirements and adapt them to the specified design concept. The over 1,000 mortice locks in the rooms of the Armani Hotel in Burj Khalifa, for instance, were delivered with coated forends and striking plates in classic Armani brown.



Certificates & Product Declaration

Quality & energy management

Customer satisfaction, customer focus, process efficiency and the ability to react quickly and flexibly to market requirements are a constant concern for CES.

As acknowledged proof of competence and efficiency, CES is certified to the strict specifications of DIN EN ISO 9001

In addition, CES provides a certified energy management system according to DIN EN ISO 50001 as an active contribution to the protection of the environment and to reduce CO₂ emissions.

Environmental Product Declaration

The sustainable use of resources is an important management task for CES. The Environmental Product Declaration (EPD) according to ISO 14025 and EN 15804 refers to mechanical mortice locks intended for installation in door systems made of different materials and for various applications. The certificate contains quantitative environmental information from the life cycle of a mortice lock. The EPD is available for download on the CES website.

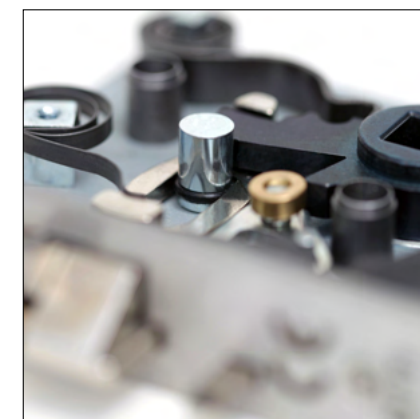
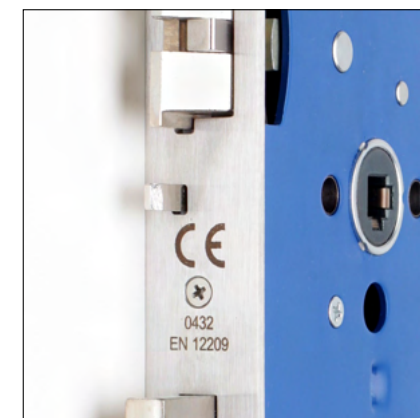
Our certified products

With the locks for single-leaf fire doors, CES presents high-quality lock solutions for the demanding contract business. In addition to certification by the MPA in Dortmund in accordance with the DIN EN 12209 and EN 179 standards, the new lock range also has the Warrington “certifire” certificate of approval.

The fire tests with the highest demands for fire resistance were successfully passed. Therefore the fire rated locks are perfectly suitable for wooden doors up to 120 minutes and for steel doors up to 240 minutes. The highest quality fire-resistant lock in the series combines all functions, such as noise damping, frame-friendly closing, locking latch bolt, as well as panic function E.

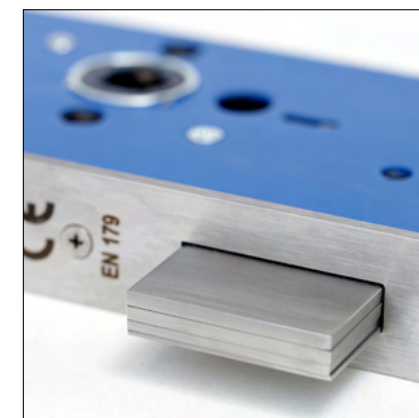


Features



Anti-thrust latch
as mechanical latch deadlocking mechanism, effective up to a door gap of 5.0 mm

Sound absorbing materials
are standard, in the interior, so these locks stand out by their particularly silent latching



Deadbolt
nickel plated, for panic locks in single-turn design with 20 mm throw

Bushed TENAX clamp follower
with leaf springs inside which locate the spindle and ensure its perfect fit



Made in Germany
Forend stainless steel 1.4301/ AISI 304
High-alloy chrome nickel steel

Escape lock with function E
including antiblocking function which allows combination with knob cylinders

Our product highlights

Triple latch

When the latch hits the striking plate during the closing process, the crank pushes the latch into the lock. As a result, the impact noise is reduced and the door quietly latches.



Different backsets

From XS to XXL

The backset is one of the most important dimensions of door locks, since the lock must match the mortice and existing holes on your door to allow the fittings to be fitted.



The finishing makes the difference

Thanks to its finishing plant, CES is able to offer a wide variety of colours and finishes: satin or glossy, brass, burnished, stainless steel, white...

Sometimes, the critical fact for receiving an order in the contract business is that the lock adapts to the given design concept. Upon customer request, our electroplating experts finish forend and striking plate of the lock.



Our Expertise: Special Locks

Our range of special locks for your unique applications offers tailor-made solutions for every door: swing doors, sliding doors, radiation protection doors or operating theatre doors.

Various latch-bolts and deadbolts, such as the roller latch for swing doors, the hook bolt or hook latch bolt for sliding doors, or the transmission bar guide behind the forend for operating theatre sliding doors, reliably lock the door in this special situation.

Fire rated locks



9100	Mortice sashlock for single-leaf fire-rated doors	14
9100SP	Mortice sashlock with anti-thrust latch for single-leaf fire-rated doors	15
9100F	Mortice nightlatch-lock for single-leaf fire-rated doors	16
9100FL	Mortice latch-lock for single-leaf fire-rated doors	17
9100F-SP	Mortice nightlatch-lock with anti-thrust latch for single-leaf fire-rated doors	18
9100R	Mortice deadlock for single-leaf fire-rated doors	19
9100WC	Mortice bathroom-lock for single-leaf fire-rated doors	20
9100E	Mortice escape-lock with panic-function E for single-leaf fire-rated doors	21
9100E-SP	Mortice escape-lock wiith anti-thrust latch for single-leaf fire-rated doors	22



9100

Mortice sashlock
for single-leaf fire-rated doors
Premium Class

Features

- Prepared for euro-profile-cylinder
- With transmission bar
- Handed (left hand/right hand to be specified)
- Centre distance 72 mm, backset 55 mm (60, 65, 70 and 80 mm)
- Bushed TENAX clamp follower 8 mm, sintered steel
- Forend 24 (20) x 235 mm, flush (rebated) doors, square or radius, satin stainless steel 1.4301 (AISI 304)
- Lock case galvanized and blue lacquered
- Triple latch-bolt sintered steel, nickel-plated;
- (Solid) Deadbolt steel, nickel-plated, double throw (20 mm)
- Striking plate 0522-16, square or radius, satin stainless steel, non-handed
- Screws included

More details about striking plates from page 69

Classification

EN 12209	3X810G2BA30
CE marked	Approved product, certificate no. 0432-CPR-00292-02
Certifire	Approved product, certificate no. CF 5418
Fire safety	Successful fire test to BS EN 1634-1 Timber door 30, 60, 90 and 120 minutes Steel door 30, 60, 90, 120 and 240 minutes

Intumescent lock pack (not included in delivery)

required	For use on 60, 90, 120 minutes timber fire doors
not required	For use on 30 minutes timber fire doors and steel fire doors

9100SP

Mortice sashlock with anti-thrust latch
for single-leaf fire-rated doors
Premium Class

Features

- Anti-thrust latch as mechanical latch-bolt deadlocking mechanism
- Prepared for euro-profile-cylinder
- With transmission bar
- Handed (left hand/right hand to be specified)
- Centre distance 72 mm, backset 55 mm (60, 65, 70 and 80 mm)
- Bushed TENAX clamp follower 8 mm, sintered steel
- Forend 24 (20) x 235 mm, flush (rebated) doors, square or radius, satin stainless steel 1.4301 (AISI 304)
- Lock case galvanized and blue lacquered
- Triple latch-bolt sintered steel, nickel-plated
- (Solid) deadbolt steel, nickel-plated, double throw (20 mm)
- Striking plate 0522-16, square or radius, satin stainless steel, non-handed
- Screws included

More details about striking plates from page 69



Classification

EN 12209	3 X810G2BA30
CE marked	Approved product, certificate no. 0432-CPR-00292-02
Certifire	Approved product, certificate no. CF 5418
Fire safety	Successful fire test to BS EN 1634-1 Timber door 30, 60, 90 and 120 minutes Steel door 30, 60, 90, 120 and 240 minutes

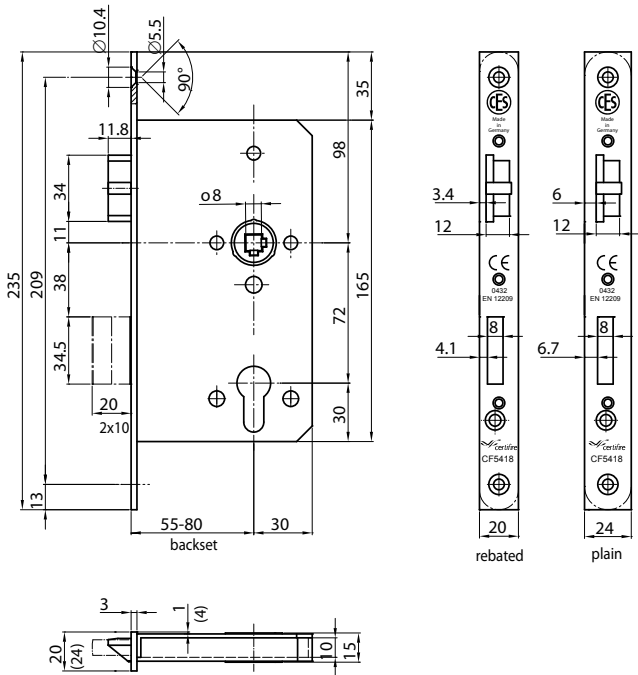
Intumescent lock pack (not included in delivery)

required	For use on 60, 90, 120 minutes timber fire doors
not required	For use on 30 minutes timber fire doors and steel fire doors



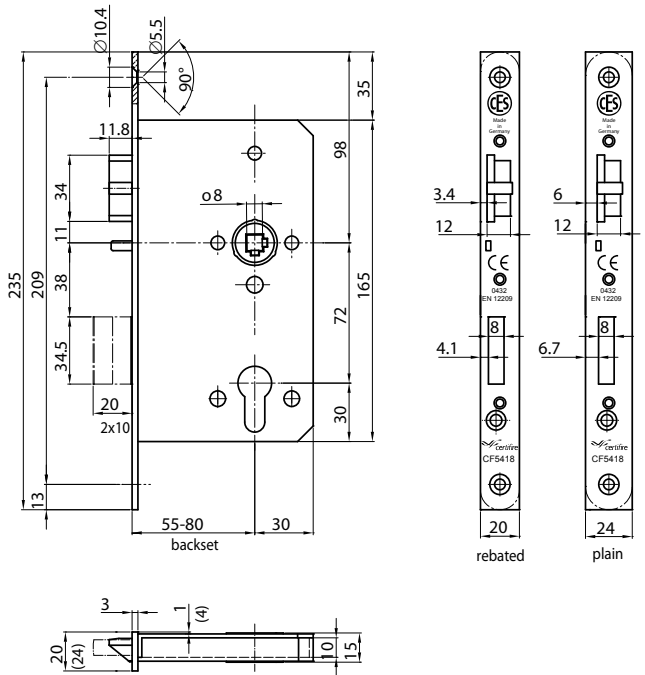
Art.No. 0522-16

Art.No. 9100



Art.No. 0522-16

Art.No. 9100SP





9100F

Mortice nightlatch-lock
for single-leaf fire-rated doors
Premium Class

Features

- Prepared for euro-profile-cylinder
- With transmission bar
- Handed (left hand/right hand to be specified)
- Centre distance 72 mm, backset 55 mm (60, 65, 70 and 80 mm)
- Bushed TENAX clamp follower 8 mm, sintered steel
- Forend 24 (20) x 235 mm, flush (rebated) doors, square or radius, satin stainless steel 1.4301 (AISI 304)
- Lock case galvanized and blue lacquered
- Triple latch-bolt sintered steel, nickel-plated;
- Striking plate 0504-16, square or radius, satin stainless steel
- Screws included

More details about striking plates from page 69

Classification

EN 12209	3X810G-BA30
CE marked	Approved product, certificate no. 0432-CPR-00292-02
Certifire	Approved product, certificate no. CF 5418
Fire safety	Successful fire test to BS EN 1634-1 Timber door 30, 60, 90 and 120 minutes Steel door 30, 60, 90, 120 and 240 minutes

Intumescent lock pack (not included in delivery)

required	For use on 60, 90, 120 minutes timber fire doors
not required	For use on 30 minutes timber fire doors and steel fire doors

9100FL

Mortice latch-lock
for single-leaf fire-rated doors
Premium Class

Features

- Only handle/lever
- Handed (left hand/right hand to be specified)
- Backset 55 mm (60, 65, 70 and 80 mm)
- Bushed TENAX clamp follower 8 mm, sintered steel
- Forend 24 (20) x 235 mm, flush (rebated) doors, square or radius, satin stainless steel 1.4301 (AISI 304)
- Lock case galvanized and blue lacquered
- Triple latch-bolt sintered steel, nickel-plated
- Striking plate 0504-16, square or radius, satin stainless steel
- Screws included
- Backset 90 + 100 mm or follower 9 mm = Article number 9000FL without "certifire" certification

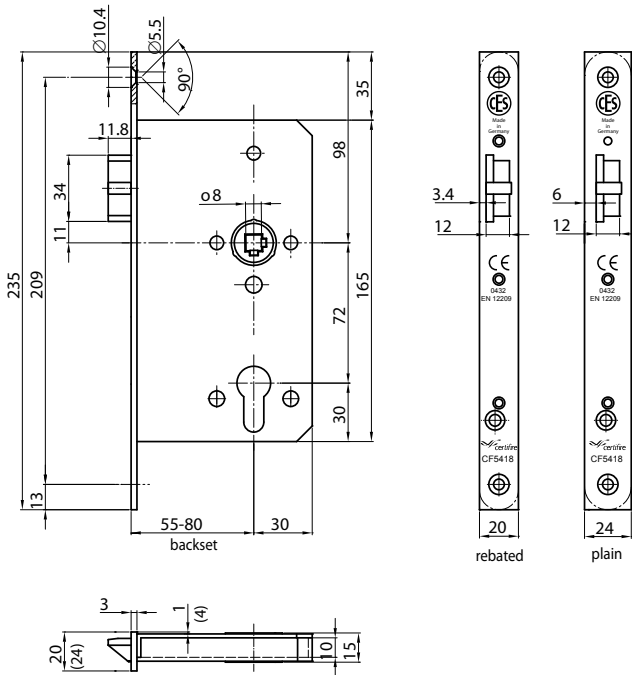
More details about striking plates from page 69

Classification

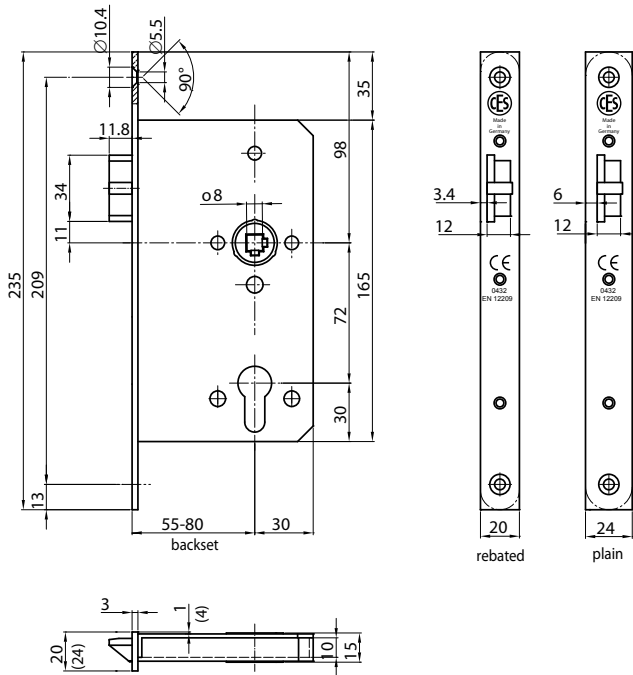
EN 12209	3X810G-BG30
CE marked	Approved product, certificate no. 0432-CPR-00292-02
Certifire	–
Fire safety	–



Art.No. 0504-16 Art.No. 9100F



Art.No. 0504-16 Art.No. 9100FL



9100F-SP

Mortice nightlatch-lock with anti-thrust latch
for single-leaf fire-rated doors
Premium Class



Features

- Anti-thrust latch as mechanical latch deadlocking mechanism
- Prepared for euro-profile-cylinder
- With transmission bar
- Handed (left hand/right hand to be specified)
- Centre distance 72 mm, backset 55 mm (60, 65, 70 and 80 mm)
- Bushed TENAX clamp follower 8 mm, sintered steel
- Forend 24 (20) x 235 mm, flush (rebated) doors, square or radius, satin stainless steel 1.4301 (AISI 304)
- Lock case galvanized and blue lacquered
- Triple latch-bolt sintered steel, nickel-plated
- Striking plate 0504-16, square or radius, satin stainless steel, non-handed
- Screws included

More details about striking plates from page 69

Classification

EN 12209	3X810G2BA30
CE marked	Approved product, certificate no. 0432-CPR-00292-02
Certifire	Approved product, certificate no. CF 5418
Fire safety	Successful fire test to BS EN 1634-1 Timber door 30, 60, 90 and 120 minutes Steel door 30, 60, 90, 120 and 240 minutes

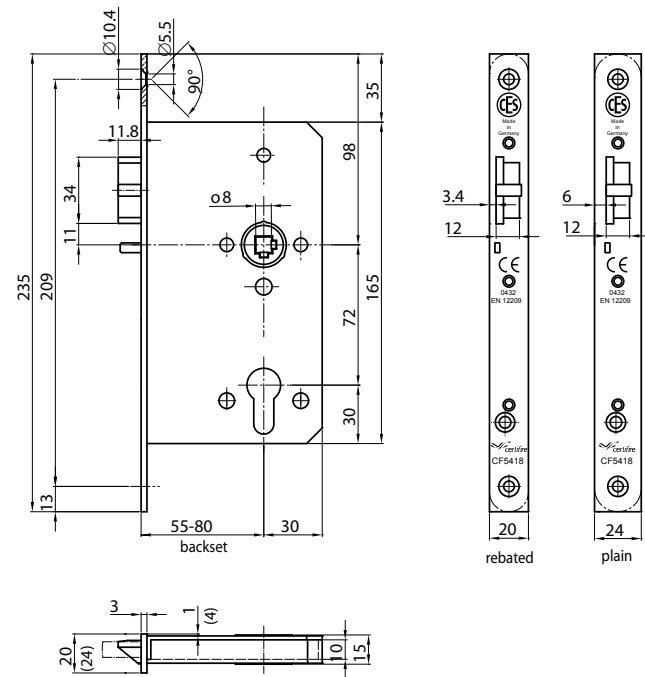
Intumescent lock pack (not included in delivery)

required	For use on 60, 90, 120 minutes timber fire doors
not required	For use on 30 minutes timber fire doors and steel fire doors



Art.No. 0504-16

Art.No. 9100F-SP



9100R

Mortice deadlock
for single-leaf fire-rated doors
Premium Class



Features

- Prepared for euro-profile-cylinder
- Handed (left hand/right hand to be specified)
- Centre distance 72 mm, backset 55 mm (60, 65, 70 and 80 mm)
- Forend 24 (20) x 235 mm, flush (rebated) doors, square or radius, satin stainless steel 1.4301 (AISI 304)
- Lock case galvanized and blue lacquered
- (Solid) Deadbolt steel, nickel-plated, double throw (20 mm)
- Striking plate 0508, square or radius, satin stainless steel, non-handed
- Screws included

More details about striking plates from page 69

Classification

EN 12209	3X810G2BA00
CE marked	Approved product, certificate no. 0432-CPR-00292-02
Certifire	Approved product, certificate no. CF 5418
Fire safety	Successful fire test to BS EN 1634-1 Timber door 30, 60, 90 and 120 minutes Steel door 30, 60, 90, 120 and 240 minutes

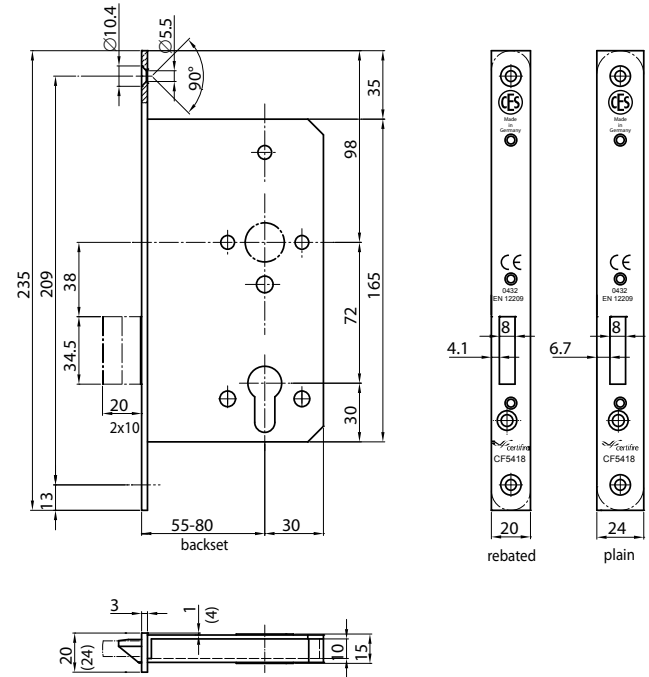
Intumescent lock pack (not included in delivery)

required	For use on 60, 90, 120 minutes timber fire doors
not required	For use on 30 minutes timber fire doors and steel fire doors



Art.No. 0508

Art.No. 9100R





9100WC

Mortice bathroom-lock
for single-leaf fire-rated doors
Premium Class

Features	
■	Handed (left hand/right hand to be specified)
■	Centre distance 78 mm, backset 55 mm (60, 65, 70 and 80 mm)
■	Bushed TENAX clamp follower 8 mm, sintered steel
■	Bathroom follower 8 mm, sintered steel
■	Forend 24 (20) x 235 mm, flush (rebated) doors, square or radius, satin stainless steel 1.4301 (AISI 304)
■	Lock case galvanized and blue lacquered
■	Triple latch-bolt sintered steel, nickel-plated
■	(Solid) Deadbolt steel, nickel-plated, single throw (15 mm)
■	Striking plate 0522-16, square or radius, satin stainless steel, non-handed
■	Screws included

More details about striking plates from page 69

Classification	
EN 12209	3X810G2BA30
CE marked	Approved product, certificate no. 0432-CPR-00292-02
Certifire	Approved product, certificate no. CF 5418
Fire safety	Successful fire test to BS EN 1634-1 Timber door 30, 60, 90 and 120 minutes Steel door 30, 60, 90, 120 and 240 minutes
Intumescent lock pack (not included in delivery)	
required	For use on 60, 90, 120 minutes timber fire doors
not required	For use on 30 minutes timber fire doors and steel fire doors

9100E

Mortice escape-lock with panic-function E
for single-leaf fire-rated doors
Premium Class

Features	
■	Anti-Panic-function “E”
■	Prepared for euro-profile-cylinder
■	With transmission bar
■	Handed (left hand/right hand to be specified)
■	Centre distance 72 mm, backset 55 mm (60, 65, 70 and 80 mm)
■	Bushed TENAX clamp follower 8 mm, sintered steel
■	Forend 24 (20) x 235 mm, flush (rebated) doors, square or radius, satin stainless steel 1.4301 (AISI 304)
■	Lock case galvanized and blue lacquered
■	Triple latch-bolt sintered steel, nickel-plated
■	Solid deadbolt steel, nickel-plated, single throw (20 mm)
■	Striking plate 0522-16, square or radius, satin stainless steel, non-handed
■	Screws included

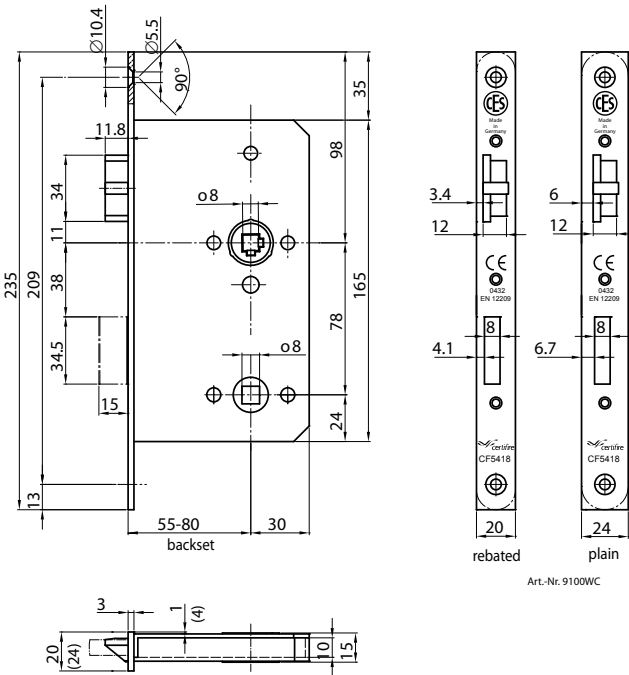
More details about striking plates from page 69



Classification	
EN 179	377B1352AB
EN 12209	3X810G2BA30
CE marked	Approved product, certificate no. 0432-CPR-00292-01, 0432-CPR-00292-02
Certifire	Approved product, certificate no. CF 5418
Fire safety	Successful fire test to BS EN 1634-1 Timber door 30, 60, 90 and 120 minutes Steel door 30, 60, 90, 120 and 240 minutes
Intumescent lock pack (not included in delivery)	
required	For use on 60, 90, 120 minutes timber fire doors
not required	For use on 30 minutes timber fire doors and steel fire doors



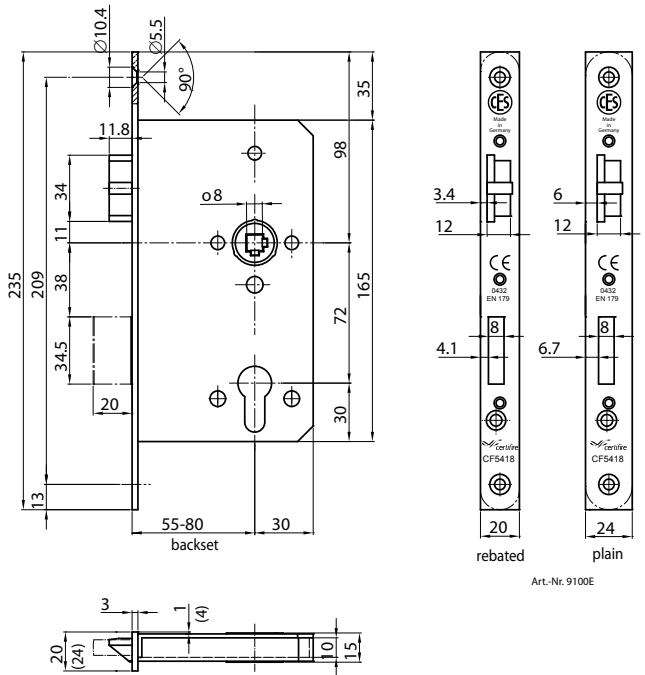
Art.No. 0522-16 Art.No. 9100WC



Art.-Nr. 9100WC



Art.No. 0522-16 Art.No. 9100E



Art.-Nr. 9100E

9100E-SP

**Mortice escape-lock with anti-thrust latch
for single-leaf fire-rated doors
Premium Class**



Features

- Anti-panic-function “E”
- Anti-thrust latch as mechanical latch-bolt deadlocking mechanism
- Prepared for euro-profile-cylinder
- With transmission bar
- Handed (left hand/right hand to be specified)
- Centre distance 72 mm, backset 55 mm (60, 65, 70 and 80 mm)
- Bushed TENAX clamp follower 8 mm, sintered steel
- Forend 24 (20) x 235 mm, flush (rebated) doors, square or radius, satin stainless steel 1.4301 (AISI 304)
- Lock case galvanized and blue lacquered
- Triple latch-bolt sintered steel, nickel-plated
- Solid deadbolt steel, nickel-plated, single throw (20 mm)
- Striking plate 0522-16, square or radius, satin stainless steel, non-handed
- Screws included

Classification

EN 179	377B1352AB
EN 12209	3X810G2BA30
CE marked	Approved product, certificate no. 0432-CPR-00292-01, 0432-CPR-00292-02
Certifire	Approved product, certificate no. CF 5418
Fire safety	Successful fire test to BS EN 1634-1 Timber door 30, 60, 90 and 120 minutes Steel door 30, 60, 90, 120 and 240 minutes

Intumescent lock pack (not included in delivery)

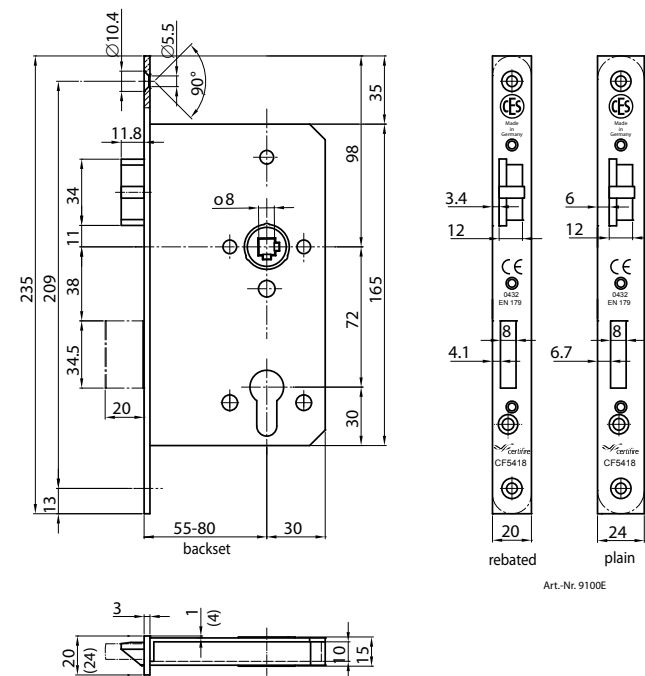
required	For use on 60, 90, 120 minutes timber fire doors
not required	For use on 30 minutes timber fire doors and steel fire doors

More details about striking plates from page 69



Art.No. 0522-16

Art.No. 9100E-SP





Locks for timber doors

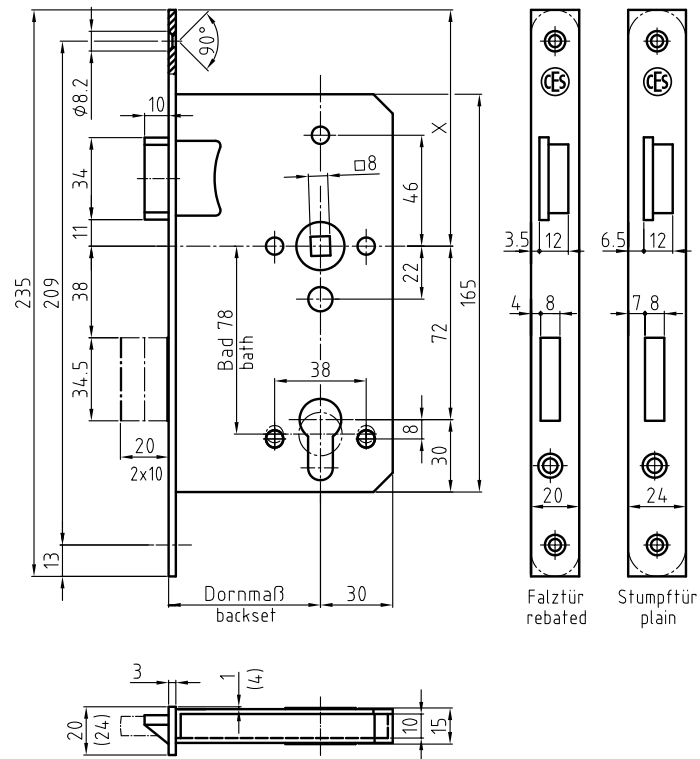
334	DIN sashlock	36
390	DIN bathroom-Lock	36
334SL	DIN sashlock with bushed follower	36
390SL	DIN bathroom-lock with bushed follower	36
300-01	DIN latch-lock	37
300-01SL	DIN latch-lock with bushed follower	37
2500	Mortice latch-lock with small lock case	38
2730	Mortice deadlock with small lock case	39
2700	Mortice bathroom-lock with small lock case	39

DIN Locks

Type	Description/features	Special features	
334	DIN sashlock according to DIN 18251-1, class 3 prepared for profile cylinder, with transmission bar, backset 55 (60) mm, centre distance 72 mm, 8 mm FIX follower, forend 20 x 235 mm for rebated doors or 24 x 235 mm for flush doors, square or radius, satin stainless steel, steel latch bolt and steel dead bolt, nickel-plated	Backset	65 mm 70 mm 80 mm
390	DIN bathroom-lock according to DIN 18251-1, class 3 for toilet/bathroom use with 8 mm dead-bolt follower backset 55 (60) mm, centre distance 78 mm, 8 mm FIX follower, forend 20 x 235 mm for rebated doors or 24 x 235 mm for flush doors, square or radius, satin stainless steel, steel latch bolt and steel dead bolt (single-turn 15 mm), nickel-plated	Special equipment	9 mm FIX follower Triple latch Noise reduction Extra lever key
334SL	DIN sashlock with bushed follower other features like article number 334	Forend surfaces	Stainless steel, polished Brass, polished Other finishes
390SL	DIN bathroom-lock with bushed follower other features like article number 390	Striking plates	0400 – Angular striking plate for rebated doors, Satin stainless steel 0522 – Flat striking plate for flush doors, Satin stainless steel Other designs



Art.No. 334



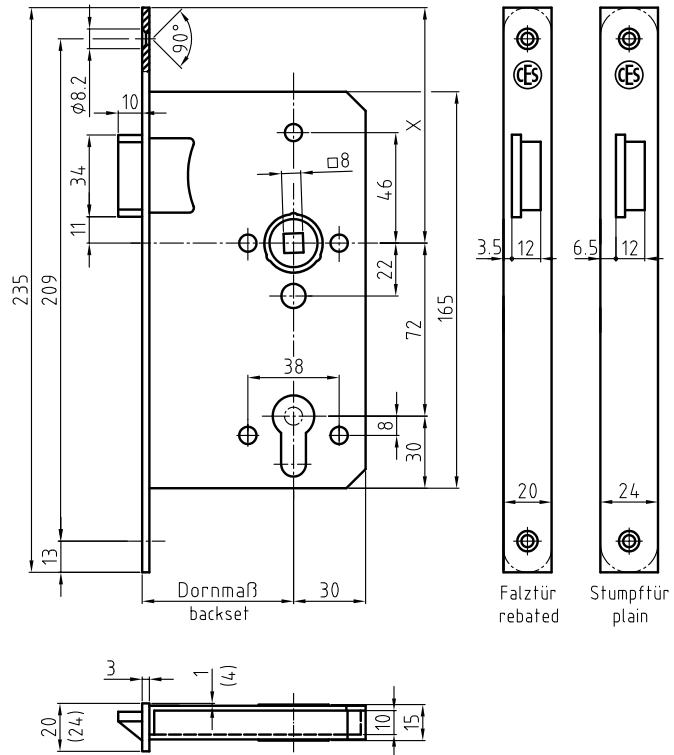
DIN latch-locks
(with large lock case)

Type	Description/features	Special features	
300-01	DIN latch-lock with large lock case performance values and dimensions according to DIN 18251-1, class 3 prepared for handle function only, backset 55 (60) mm, 8 mm FIX follower, forend 20 x 235 mm for rebated doors or 24 x 235 mm for flush doors, square or radius, satin stainless steel, steel latch bolt, nickel-plated	Backset	65 mm 70 mm 80 mm
300-01SL	DIN latch-lock with bushed follower and large lock case other features like article number 300-01	Special equipment	Triple latch Noise reduction 9 mm FIX follower
		Forend surfaces	Stainless steel, polished Brass, polished Other finishes
		Striking plates	0445 – Angular striking plate for rebated doors Satin stainless steel 0504 – Flat striking plate for flush doors Satin stainless steel Other designs



Art.No. 300-01

Art.No. 300-01SL





Locks for narrow stile metal doors

5434	Mortice lock with transmission bar	56
5834	Mortice lock with transmission bar, medium version	56
5630	Mortice lock with roller-latch	57
5530	Mortice deadlock	57

5434

Mortice lock with transmission bar

Features	
available backsets:	25 mm one-turn, bolt space 15 mm 30/35/40/45 mm special two-turn, bolt space 25 mm
distance:	92 mm
follower:	8 mm
forend:	24x255 mm edged galvanized, silver lacquered stainless steel plastic coated
latch bolt:	steel nickel plated
dead bolt:	steel nickel plated
striking plate:	art.-no. 5729, art.-no. 2524 (6/8/10/12 mm)



Art.No. 5729 + 2524 Art.No. 5434

5834

Mortice lock with transmission bar
(medium version)

Features	
available backsets:	20, 26, 30 mm only one-turn, bolt space 15 mm
distance:	92 mm
follower:	8 mm
forend:	24x245 mm edged galvanized, silver lacquered stainless steel plastic coated
latch bolt:	steel nickel plated
dead bolt:	steel nickel plated
striking plate:	art.-no. 5729, art.-no. 2524 (6/8/10/12 mm)



Art.No. 5729 + 2524 Art.No. 5834

5630

Mortice lock with roller-latch

Features	
available backsets:	30, 35, 45 mm special two-turn, bolt space 25 mm
forend:	24x255 mm edged galvanized, silver lacquered stainless steel, plastic coated
dead bolt:	steel nickel plated
striking plate:	art.-no. 5729, art.-no. 2524 (6/8/10/12 mm)



Art.No. 5729 + 2524 Art.No. 5630

5530

Mortice deadlock

Features	
available backsets:	25 mm one-turn, bolt space 15 mm 25, 30, 35 mm special two-turn, bolt space 25 mm
forend:	24x160 mm edged galvanized, silver lacquered stainless steel, plastic coated
dead bolt:	steel nickel plated
striking plate:	art.-no. 5730



Art.No. 5730 Art.No. 5530

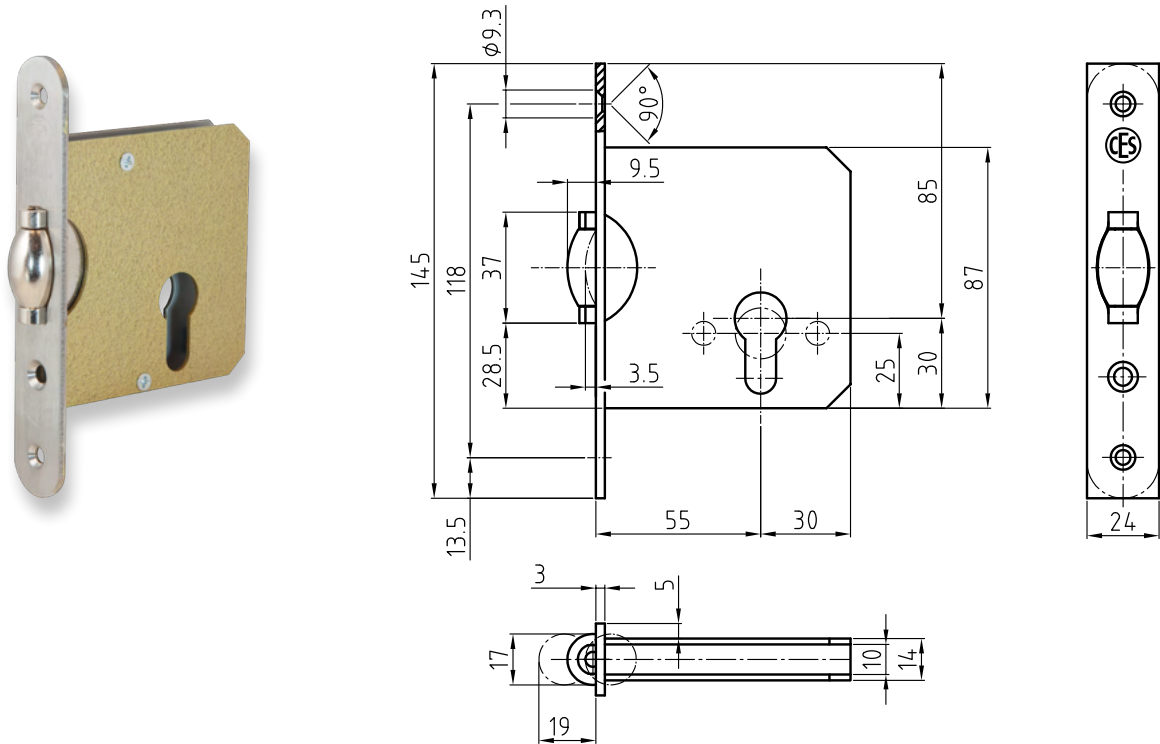


Locks for special applications

Swing door locks		
4530	Swing-door lock with roller-latch with large lock case	42
4590	Swing-door lock with roller-latch with large lock case	42
4700	Swing-door lock with roller-latch with small lock case	43
4730	Swing-door lock with roller-latch with small lock case	44
4790	Swing-door lock with roller-latch with small lock case	44
Sliding door locks		
5530N	Sliding-door lock with compass-bolt	45
5590	Sliding-door lock with compass-bolt	45
5830	Sliding-door lock with hook-latch	46
5800	Sliding-door lock with hook-latch	46
Mortice locks with 3 bolts		
8030	Mortice lock without transmission bar	51
8034	Mortice lock with transmission bar	51
Radiation shielding doors		
8230	Mortice lock without transmission bar	52
8234	Mortice lock with transmission bar	52
Sliding door locks for operating theatres		
9003	Sliding door lock with shoot bolt guide behind the forend	53
9004	Sliding door lock with shoot bolt guide at backset	53
9005	Sliding door lock with shoot bolt guide behind the forend	53
9006	Sliding door lock with shoot bolt guide at backset	53

Swing-door lock with roller-latch
with small lock case
including striking plate

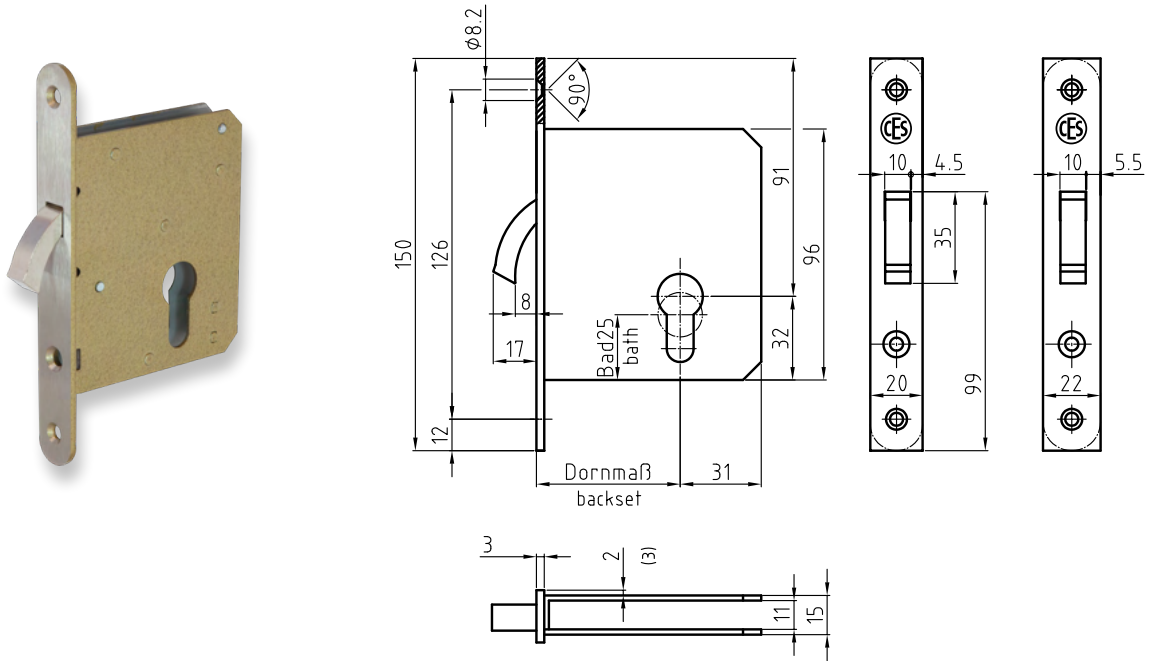
Type	Description/features	Special features
4730	Swing-door lock with roller-latch with small lock case prepared for profile cylinder, backset 55 mm, forend 24 x 145 mm for flush doors, square or radius, satin stainless steel, steel roller-latch, nickel-plated including: 0511 – Striking plate without blind groove	Forend + striking plate Stainless steel, polished Brass, polished Other designs
4790	Swing-door lock with roller-latch with small lock case for toilet/bathroom use with 8 mm dead-bolt follower, backset 55 mm, forend 24 x 145 mm for flush doors, square or radius, satin stainless steel, steel roller-latch, nickel-plated including: 0511 – Striking plate without blind groove	



Art.No. 4730

Sliding-door lock with compass-bolt
including striking plate

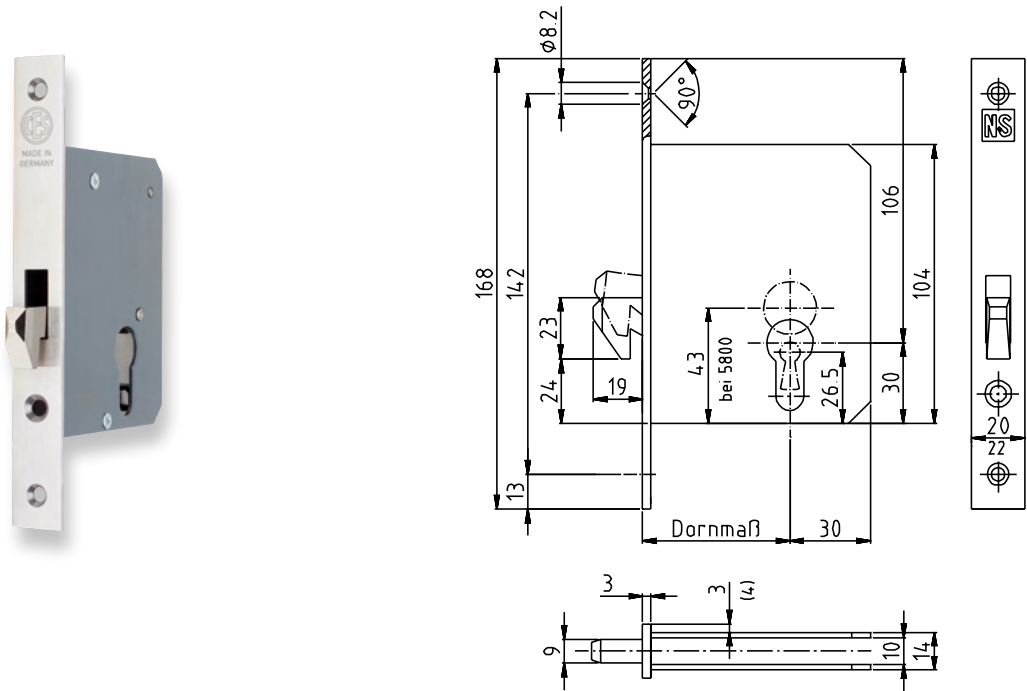
Type	Description/features
5530N	Sliding-door lock with compass-bolt prepared for profile cylinder, backset 55 mm, forend 20 (22) x 150 mm for flush doors, square or radius, satin stainless steel, compass-bolt, steel nickel-plated including: 0512 – Striking plate
5590	Sliding-door Lock with compass-bolt for toilet/bathroom use with 8 mm dead-bolt follower, backset 55 mm, forend 20 (22) x 150 mm for flush doors, square or radius, satin stainless steel, compass-bolt, steel nickel-plated including: 0512 – Striking plate



Art.No. 5530N

Sliding-door lock with hook-latch including striking plate

Type	Description/features	Special features
5830	Sliding-door lock with hook-latch (not lockable) prepared for profile cylinder, backset 55 mm, forend 20 (22) x 168 mm for flush doors, square or radius, satin stainless steel, hook-latch steel, nickel-plated including: 0514 – Striking plate	Forend + striking plate Stainless steel, polished Brass, polished Other designs
5800	Sliding-door lock with hook-latch (not lockable) for toilet/bathroom use with 8 mm escutcheon follower, backset 55 mm forend 20 (22) x 168 mm for flush doors, square or radius, satin stainless steel, hook-latch steel, nickel-plated including: 0514 – Striking plate	



Art.No. 5830

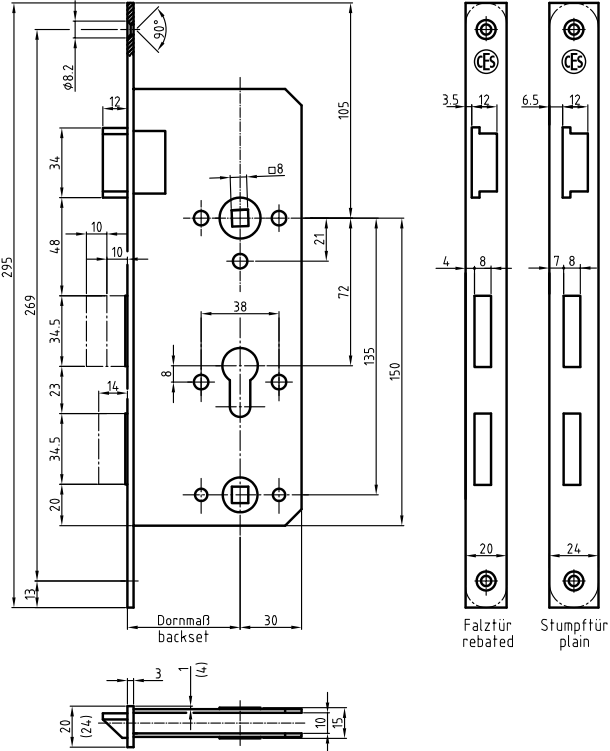
Mortice locks with 3 bolts

Type	Description/features	Special features
8030	Mortice lock with 3 bolts prepared for profile cylinder, without transmission bar, with bathroom locking via 8 mm dead bolt follower, backset 55 (60) mm, centre distance 72 und 135 mm, 8 mm follower, forend 20 x 295 mm for rebated doors or 24 x 295 mm for flush doors, square or radius, satin stainless steel, steel latch bolt and steel dead bolt, nickel-plated	Backset 65 mm 70 mm 80 mm Special equipment Emergency function
8034	Mortice lock with 3 bolts prepared for profile cylinder, with transmission bar, with bathroom locking via 8 mm dead bolt follower, backset 55 (60) mm, centre distance 72 und 135 mm, 8 mm follower, forend 20 x 295 mm for rebated doors or 24 x 295 mm for flush doors, square or radius, satin stainless steel, steel latch bolt and steel dead bolt, nickel-plated	Forend surfaces Stainless steel, polished Brass, polished Other designs Striking plates 0433 – Angular striking plate for rebated doors, Satin stainless steel 0518 – Flat striking plate for flush doors, Satin stainless steel



Art.No. 0518

Art.No. 8030



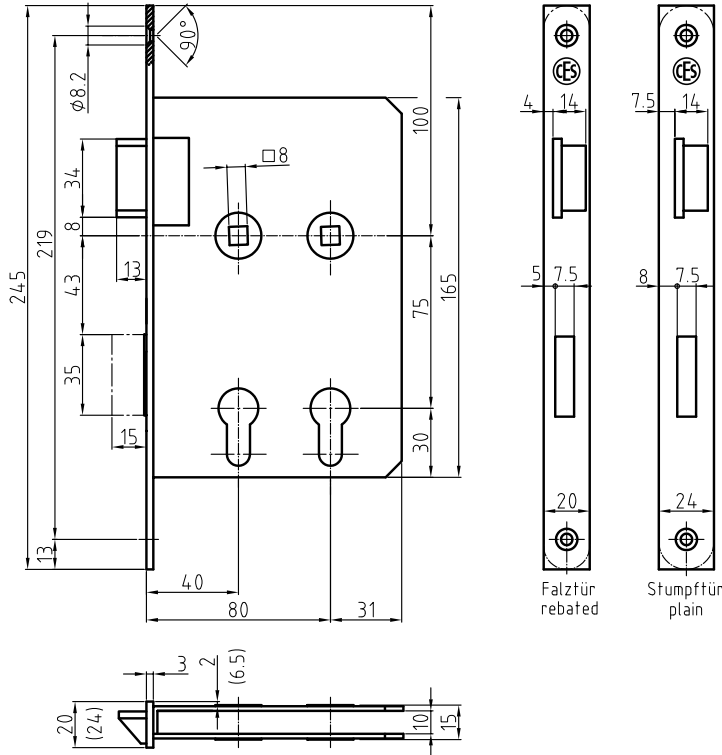
Falztür rebated
Stumpftür plain

Mortice locks
for radiation shielding doors

Type	Description/features
8230	Mortice lock for radiation shielding doors prepared for profile cylinder, without transmission bar, profile piecing at 40 and 80 mm backset, centre distance 75 mm, 8 mm follower, forend 20 x 245 mm for rebated doors or 24 x 245 mm for flush doors, square or radius, satin stainless steel, brass latch bolt and brass dead bolt, nickel-plated
8234	Mortice lock for radiation shielding doors prepared for profile cylinder, with transmission bar (optionally for 40 or 80 mm backset) profile piercing at backset 40 and 80 mm centre distance 75 mm, 8 mm follower, forend 20 x 245 mm for rebated doors or 24 x 245 mm for flush doors, square or radius, satin stainless steel, brass latch bolt and brass dead bolt, nickel-plated



Art.No. 8230

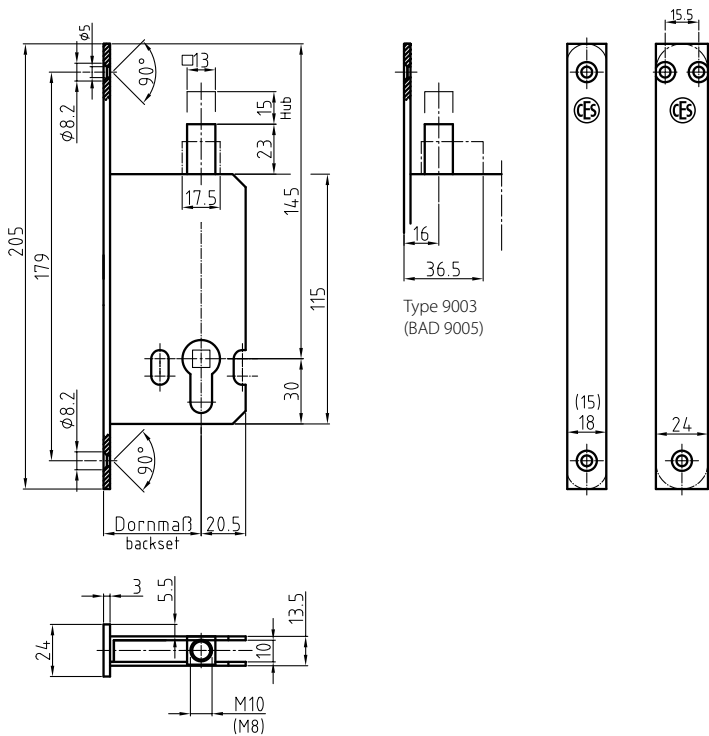


Mortice locks
for sliding doors of operating theatres

Type	Description/features	Special features
9003	Mortice lock for operating theatres with shoot bolt guide behind the forend, with M10 (M8) stud bolt to receive the shoot bolt, prepared for profile cylinder, backset 45 mm, forend 24 x 205 mm for flush doors, square or radius, satin stainless steel	Forend 15 mm, edged, Zinc-plated (electroplated) 18 mm, edged, Satin stainless steel 20 mm, edged, Satin stainless steel
9004	Mortice lock for operating theatres with shoot bolt guide at backset, backset 45 (50, 55, 60, 65, 70, 80, 90, 100) other features same as article no. 9003	Accessories Round bar, up to 1,500 mm (article no. 0601), Zinc-plated (electroplated) Round bar, as from 1,501 mm (article no. 0601), Zinc-plated (electroplated) Bar guiding plate (article no. 0604), Zinc-plated (electroplated) Covering rail (article no. 0602/0603), Satin stainless steel Other designs
9005	Mortice lock for operating theatres with shoot bolt guide behind the forend, with M10 (M8) stud bolt to receive the shoot bolt, for toilet/bathroom use with 8 mm escutcheon follower, backset 45 mm, forend 24 x 205 mm for flush doors, square or radius, satin stainless steel	
9006	Mortice lock for operating theatres with shoot bolt guide at backset, backset 45 (50, 55, 60, 65, 70, 80, 90, 100) other features same as article no. 9005	



Art.No. 9003



Striking plates



	Overview “Which striking plate fits which lock?”	70
0400	Angular striking plate for rebated doors	71
0402	Angular striking plate for rebated doors	71
0433	Angular striking plate for rebated doors	72
0439	Angular striking plate for rebated doors	71
0445	Angular striking plate for rebated doors	73
0504	Flat striking plate for flush doors	73
0504-11	Flat striking plate for flush doors	73
0504-16	Flat striking plate for flush doors	73
0507	Striking plate	74
0508	Striking plate	74
0510	Striking plate	75
0511	Striking plate	75
0512	Striking plate	76
0513	Striking plate	76
0514	Striking plate	76
0518	Flat striking plate for flush doors	72
0522	Flat striking plate for flush doors	77
0522-16	Flat striking plate for flush doors	77
0522-17	Flat striking plate for flush doors	77
0522-18	Flat striking plate for flush doors	77
0590	Flat striking plate	77
2524	Striking plate	56
5729	Striking plate	56
5730	Striking plate	57

Overview
“Which striking plate fits which lock?”

Striking plate	Lock
0400	334, 334SL, 390, 390SL, 8230
0402	334, 334SL, 390, 390SL, 8230
0433	8030, 8034
0439	334, 334SL, 390, 390SL, 8230
0445	2500, 300-01, 300-01SL
0504	2500, 300-01, 300-01SL
0504-11	2500, 300-01, 300-01SL
0504-16	9100F, 9100FL, 9100F-SP
0507	2700, 2730
0508	2700, 2730
0510	4530, 4590
0511	4730, 4790 (without blind groove) 4700 (with blind groove) 4730, 4790 (without blind groove) 4700 (with blind groove)
0512	5530N, 5590
0513	5630
0514	5800, 5830
0518	8030, 8034
0522	334, 334-SL, 390, 390SL, 8230
0522-16	9100, 9100SP, 9100WC, 9100E, 9100E-SP
0522-17	9100F, 9100FL, 9100F-SP
0522-18	9100R
2524	5434, 5834, 5630
5729	5434, 5834, 5630
5730	5530

Striking plates

Type	Description/features
0400	Angular striking plate for rebated doors for left-hand and right-hand use, dimensions: 20 x 20 x 170 mm, lacquered, nickel-silver colour
	fitting for article: 334, 334SL, 390, 390SL, 8230
0402	Angular striking plate for rebated doors for left-hand and right-hand use, dimensions: 20 x 8 x 170 mm, lacquered, nickel-silver colour
	fitting for article: 334, 334SL, 390, 390SL, 8230
0439	Angular striking plate for rebated doors with plastic backing, for left-hand and right-hand use, dimensions: 20 x 8 x 170 mm, lacquered in nickel-silver colour
	fitting for article: 334, 334SL, 390, 390SL, 8230



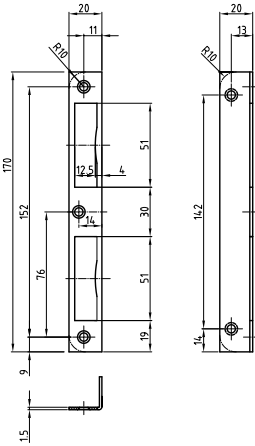
Art.No. 0400



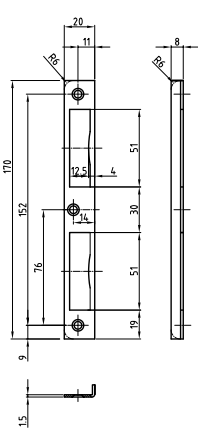
Art.No. 0402



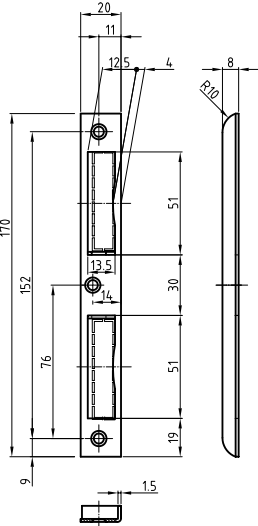
Art.No. 0439



Art.No. 0400



Art.No. 0402



Art.No. 0439

Striking plates

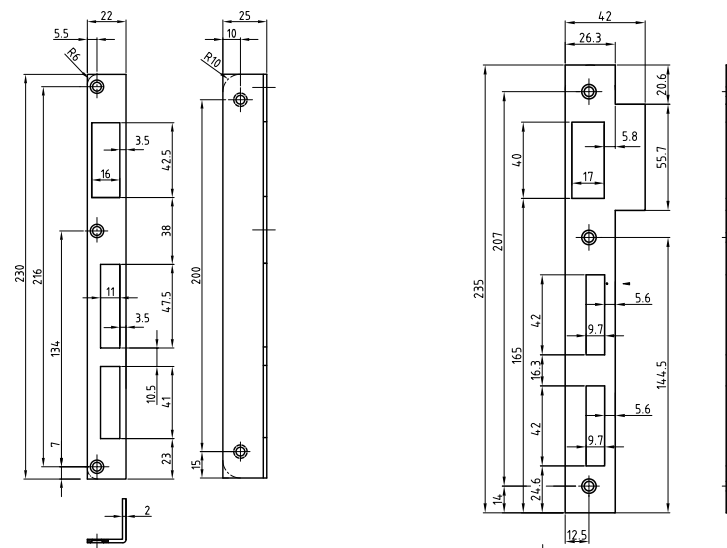
Type	Description/features
0433	Angular striking plate for rebated doors for one-sided use, dimensions: 22 x 25 x 230 mm, only satin stainless steel
	fitting for article: 8030, 8034
0518	Flat striking plate for flush doors for one-sided use, dimensions: 26 (42) x 235 mm, edged, satin stainless steel
	fitting for article: 8030, 8034



Art.No. 0433



Art.No. 0518



Art.No. 0433

Art.No. 0518

Striking plates

Type	Description/features
0445	Angular striking plate for rebated doors for left-hand and right-hand use, dimensions: 20 x 10 x 100 mm, lacquered in nickel-silver colour
	fitting for article: 2500 and DIN Latch-locks 300-01, 300-01SL
0504	Flat striking plate for flush doors for left-hand and right-hand use, dimensions: 24 (42) x 85 mm, square or radius, lacquered in nickel-silver colour
	fitting for article: 2500 and DIN Latch-locks 300-01, 300-01SL
0504-11	Flat striking plate for flush doors for left-hand and right-hand use, with curved lobe, dimensions: 24 (37,5) x 85 mm square or radius, lacquered in nickel-silver colour
	fitting for article: 2500 and DIN Latch-locks 300-01, 300-01SL
0504-16	Flat striking plate for flush doors for Mortise latch-locks non-handed, with curved lobe, dimensions: 24 (38) x 85 mm, square or radius, lacquered in nickel-silver colour
	fitting for article: 9100F, 9100FL, 9100F-SP



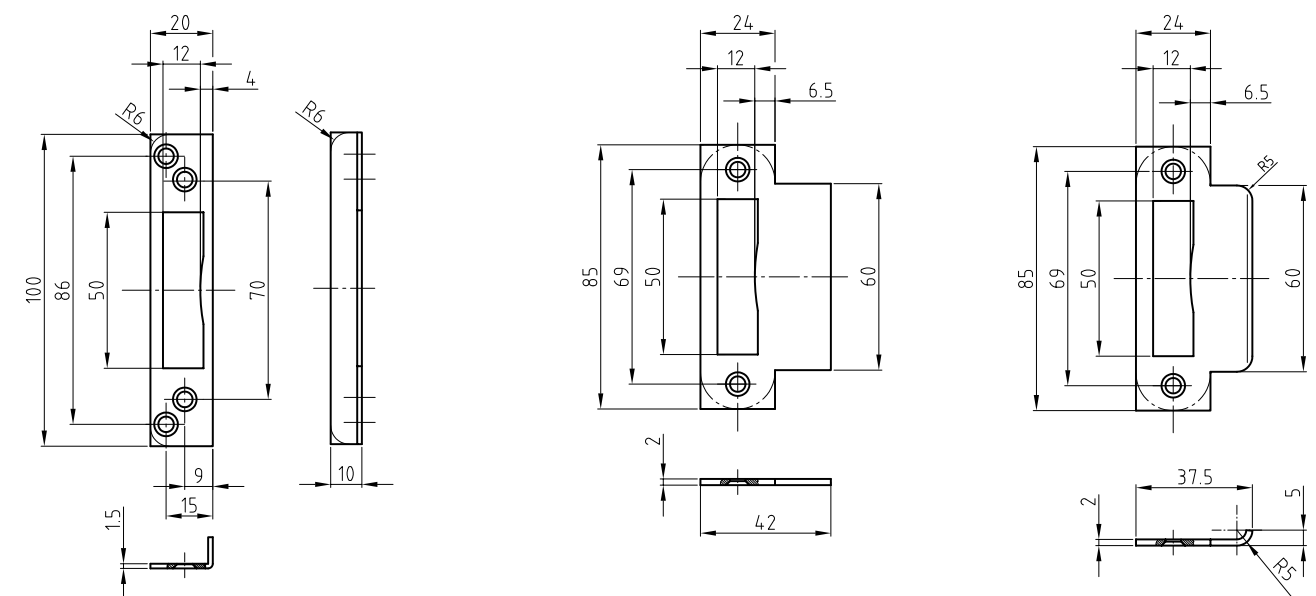
Art.No. 0445



Art.No. 0504



Art.No. 0504-11



Art.No. 0455

Art.No. 0504

Art.No. 0504-11

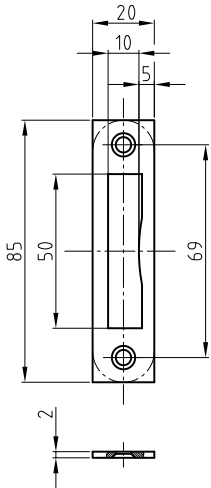
Striking plates

Type	Description/features
0507	Striking plate Dimensions: 20 x 85 mm, square or radius, lacquered in nickel-silver colour fitting for article: 2700, 2730
0508	Striking plate dimensions: 24 x 85 mm square or radius, lacquered in nickel-silver colour fitting for article: 2700, 2730

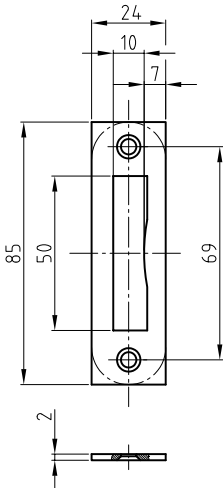


Art.No. 0507

Art.No. 0508



Art.No. 0507



Art.No. 0508

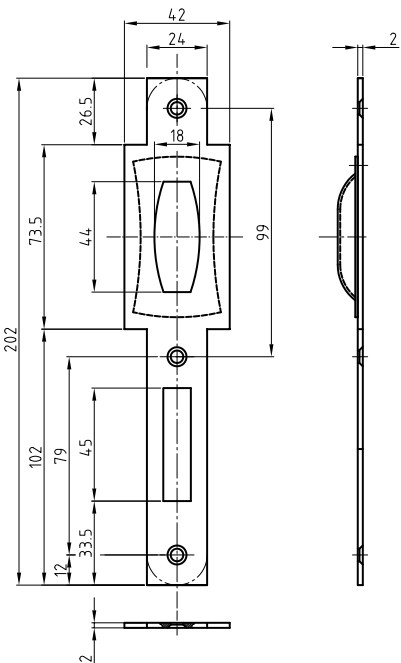
Striking plates

Type	Description/features
0510	Striking plate Dimensions: 24 (42) x 202 mm, square or radius, lacquered in nickel-silver colour fitting for article: 4530, 4590
0511	Striking plate Dimensions: 24 (42) x 123 mm square or radius, lacquered in nickel-silver colour fitting for article: 4730, 4790 (without blind groove) 4700 (with blind groove)

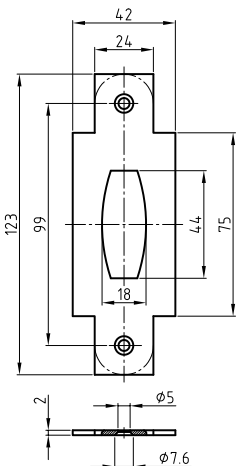


Art.No. 0510

Art.No. 0511



Art.No. 0510



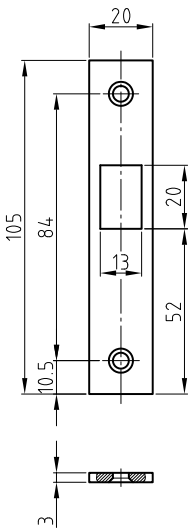
Art.No. 0511

Striking plates

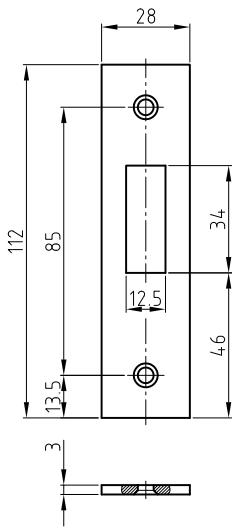
Type	Description/features
0512	Striking plate Dimensions: 20 x 105 mm, square or radius, lacquered in nickel-silver colour fitting for article: 5530N, 5590
0513	Striking plate Dimensions: 24 x 112 mm, edged, satin stainless steel fitting for article: 5630
0514	Striking plate Dimensions: 22 x 112 mm, edged, lacquered in nickel-silver colour fitting for article: 5800, 5830



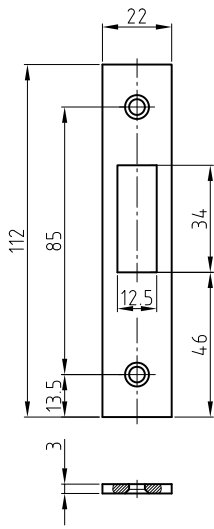
Art.No. 0512 Art.No. 0513 Art.No. 0514



Art.No. 0512



Art.No. 0513



Art.No. 0514

Subject to changes without notice

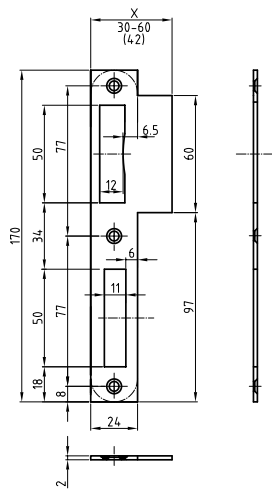
Striking plates

Type	Description/features
0522	Flat striking plate for flush doors for one-sided use, dimensions: 24 (42) x 170 mm, square or radius, lacquered in nickel-silver colour Version with special lobe width (<> 42 mm) fitting for article: 334, 334-SL, 390, 390SL, 8230
0522-16	Flat striking plate for flush doors for one-sided use, with curved lobe, dimensions: 24 (37,5) x 170 mm, square or radius, lacquered in nickel-silver colour fitting for article: 9100, 9100SP, 9100WC, 9100E, 9100E-SP
0522-17	Flat striking plate for flush doors for Mortise latch-locks non-handed, with curved lobe, dimensions: 24 (38) x 170 mm, square or radius, lacquered in nickel-silver colour fitting for article: 9100F, 9100FL, 9100F-SP
0522-18	Flat striking plate for flush doors for Mortise Deadlocks non-handed, with curved lobe, dimensions: 24 (38) x 170 mm, square or radius, lacquered in nickel-silver colour fitting for article: 9100R

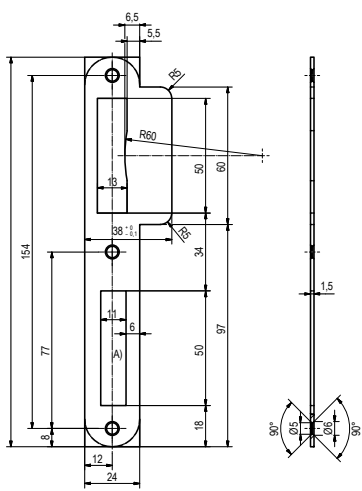


Art.No. 0522

Art.No. 0522-16 Art.No. 0522-17 Art.No. 0522-18



Art.No. 0522



Art.No. 0522-16

Pictograms

Pictograms are used on the article pages to make it easier to select the right lock.

They describe the standard, classification or locking type. Below you will find the meaning of the various pictograms.



- Mortice lock prepared for euro-profile-cylinder
- Mortice lock in bathroom-version
- Mortice lock for formed key



- DIN 18250 Mortice locks for fire doors and smoke control doors
- DIN 18251-1 Mortice locks for rebated doors
- DIN 18251-2 Mortice locks for narrow stile doors



- DIN EN 1125 Panic exit devices operated by a horizontal bar, for use on escape routes
 - DIN EN 12209 Mechanically operated locks and striking plates
 - DIN EN 179 Emergency exit devices operated by a lever handle or push pad, for use on escape routes
- Installation instructions EN 12209 or
Installation instructions EN 179



- Successful fire test to BS EN 1634-1
Timber door 30, 60, 90 and 120 minutes, up to 2 hours
- Steel door 30, 60, 90, 120 and 240 minutes, up to 4 hours



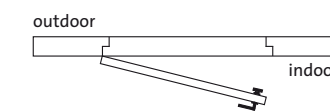
- CE-marked as a visible proof that the fire-rated locks comply with EU requirements

Explanation of DIN direction

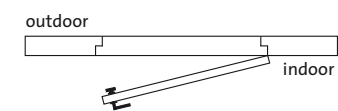
The opening direction of doors (opening left or right) is relevant for the selection of the lock, unless it is a lock that can be used on both sides.

Depending on the type of hinge - i.e. the side where the hinges are located - a distinction is made between left-opening doors (DIN left/ISO 6 Door) and right-opening doors (DIN right/ISO 5 Door).

DIN left



DIN right



ISO 6 Door (Anti-Clockwise Closing)

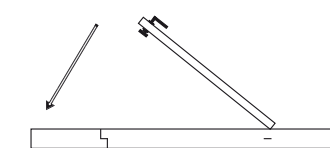


Figure 6 Door



ISO 5 Door (Clockwise Closing)

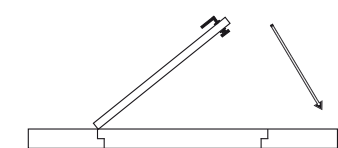


Figure 5 Door



CES Security Solutions Ltd

Unit 6, Northpoint Ind Est
Enterprise Close
Rochester, Kent ME2 4LX
p +44 (0)1634 713 369
e info@cessecurity.co.uk