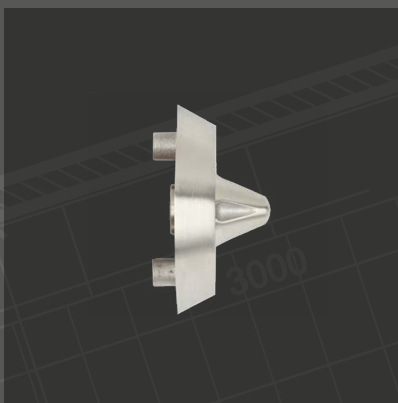
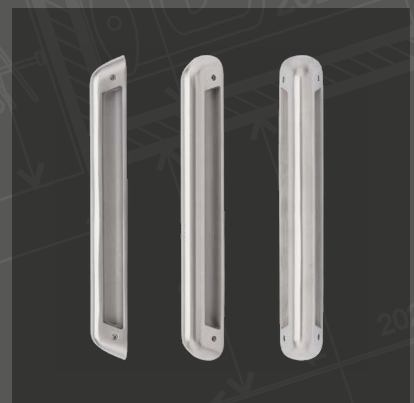
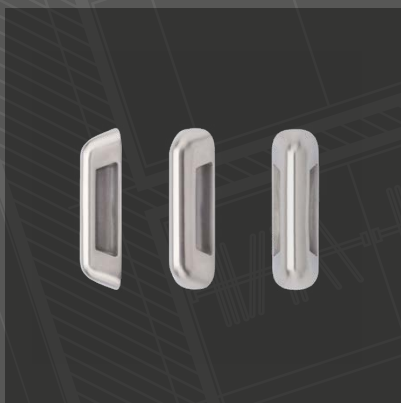
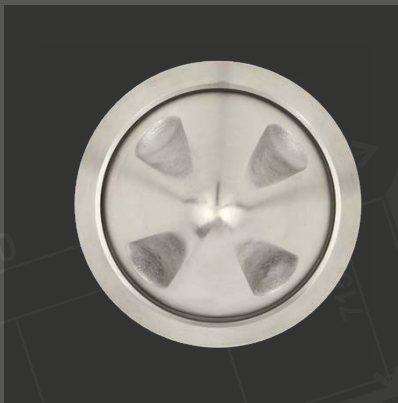
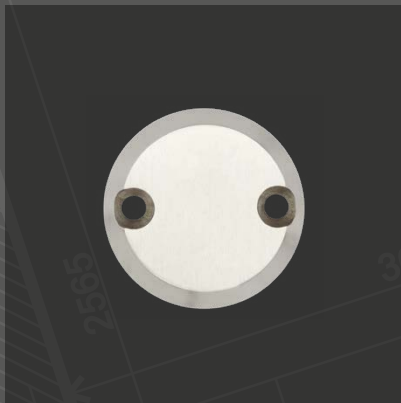


# ZOO

ARCHITECTURAL HARDWARE



## ANTI-LIGATURE

PRODUCT GUIDE 2025

The purpose of Anti-Ligature door hardware is to reduce the risk of patient self-harm for people residing in special care environments. The aim is to provide personal freedom and quality of life but, at the same time, reduce the risk of self-harm by providing products where it is difficult to attach a ligature.

The new ZS-AL (Zoo Stainless – Anti-Ligature) range of anti-ligature hardware has been meticulously designed to provide the highest levels of safety. Including knob furniture, turn & releases, escutcheons, and pull handles, the range has been independently tested in accordance with DHF Technical Specification TS001:2013 *Enhanced Requirements & Test Methods for Anti-Ligature Hardware*.

The ZS-AL000, ZS-AL001, ZS-AL008, ZS-AL010, ZS-ALP100, and ZS-ALP250 all pass TS001 with the highest rating: A4 – 0.5mm ligature.

We are also exceeding the scope of the TS001 specification by incorporating the physical test outlined in TS001 into our factory quality control process. This ensures that every production batch meets the required standards and remains consistent with the originally tested product.

All products in the range have been successfully fire tested in accordance with BS EN 1634-1 and are suitable for use on 30- and 60-minute timber fire doors. Additionally, all items come with Torx security bolts and grub screws where required, further enhancing safety and security.

## Contents

### ANTI-LIGATURE PULL HANDLES

- 04 ... Pull Handle - 150mm
- 05 ... Pull Handle - 300mm

### ANTI-LIGATURE DOOR KNOB

- 06 ... Knob on rose set

### ANTI-LIGATURE ESCUTCHEONS

- 07 ... Blank Escutcheon
- 07 ... Euro Profile Escutcheon

### ANTI-LIGATURE TURN & RELEASE

- 08 ... Turn & Release Set



ZS-ALP100 Series  
Anti-ligature Pull Handle



TECHNICAL SPECIFICATION

PRODUCT FEATURES

- **Length:** 150mm
- **Width:** 44mm
- **Projection:** 34mm
- **Centres:** 100mm
- **Material:** Grade 304 Stainless Steel
- Security bolt fixings supplied
- BF = Bolt-fix single side
- GS = Grub screw side to make up back-to-back set

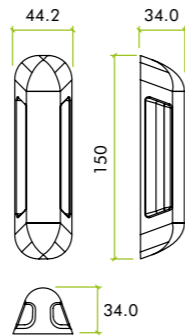
FIRE TESTING

- Successfully fire tested in accordance with the requirements of BS EN 1634-1, suitable for use on timber fire doors upto 30 and 60 minutes

ANTI-LIGATURE TESTING

- Independently tested in accordance with DHF Technical Specification TS001:2013 Enhanced Requirements & Test Methods for Anti-Ligature Hardware and passed with the highest rating: A4 - 0.5mm ligature

TECHNICAL



PLEASE NOTE

For a back-to-back pair, please order both ZS-ALP100BF-SSS & ZS-ALP100GS-SSS to create a back-to-back set.

ZS-ALP250 Series  
Anti-ligature Pull Handle



TECHNICAL SPECIFICATION

PRODUCT FEATURES

- **Length:** 300mm
- **Width:** 44mm
- **Projection:** 34mm
- **Centres:** 250mm
- **Material:** Grade 304 Stainless Steel
- Security bolt fixings supplied
- BF = Bolt-fix single side
- GS = Grub screw side to make up back-to-back set

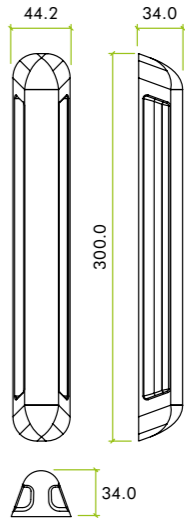
FIRE TESTING

- Successfully fire tested in accordance with the requirements of BS EN 1634-1, suitable for use on timber fire doors upto 30 and 60 minutes

ANTI-LIGATURE TESTING

- Independently tested in accordance with DHF Technical Specification TS001:2013 Enhanced Requirements & Test Methods for Anti-Ligature Hardware and passed with the highest rating: A4 - 0.5mm ligature

TECHNICAL



PLEASE NOTE

For a back-to-back pair, please order both ZS-ALP250BF-SSS & ZS-ALP250GS-SSS to create a back-to-back set.

CODE	DESCRIPTION	FINISH
ZS-ALP100BF-SSS	Anti-ligature pull handle - Bolt-fix single	Satin Stainless
ZS-ALP100GS-SSS	Anti-ligature pull handle - Back-to-back fix half set	Satin Stainless
<div><div></div><div><p><b>For more information please contact us today:</b> ERA Home Security T/A Zoo Hardware, Unit B, Dukes Drive, Kingmoor Park North, Carlisle, Cumbria CA6 4SH <b>Call: 01228 672900</b> <b>Fax: 01228 672928</b> <b>Email: <a href="mailto:sales@zoo-hardware.co.uk">sales@zoo-hardware.co.uk</a></b> <b>Web: <a href="http://www.zoohardware.co.uk">www.zoohardware.co.uk</a></b></p></div><div><p>FM 668401 EMS 668402</p></div></div>		

CODE	DESCRIPTION	FINISH
ZS-ALP250BF-SSS	Anti-ligature pull handle - Bolt-fix single	Satin Stainless
ZS-ALP250GS-SSS	Anti-ligature pull handle - Back-to-back fix half set	Satin Stainless
<div><div></div><div><p><b>For more information please contact us today:</b> ERA Home Security T/A Zoo Hardware, Unit B, Dukes Drive, Kingmoor Park North, Carlisle, Cumbria CA6 4SH <b>Call: 01228 672900</b> <b>Fax: 01228 672928</b> <b>Email: <a href="mailto:sales@zoo-hardware.co.uk">sales@zoo-hardware.co.uk</a></b> <b>Web: <a href="http://www.zoohardware.co.uk">www.zoohardware.co.uk</a></b></p></div><div><p>FM 668401 EMS 668402</p></div></div>		

ZS-AL010-010 Series  
Anti-ligature Knob on Rose Set



ZS-AL010-010

TECHNICAL SPECIFICATION

PRODUCT FEATURES

- **Diameter:** 63.5mm
- **Projection:** 52.5mm
- **Centres:** 38mm
- **Material:** Grade 304 Stainless Steel
- Knob on rose set
- Security bolt fixings supplied
- **Featuring:**
  - 1x knob with fixed spindle and rose with threaded lugs for the controlled / service user side (INT)
  - 1x Torx grub screw fixed knob and countersunk rose for the uncontrolled /staff side (EXT)

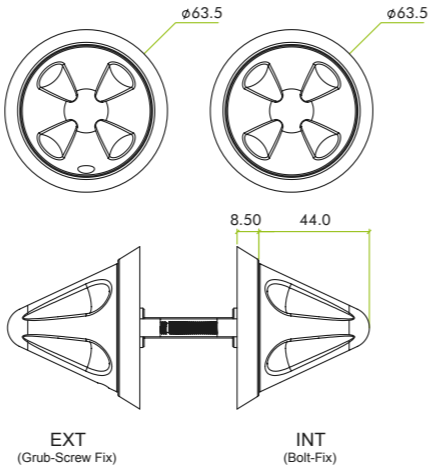
FIRE TESTING

- Successfully fire tested in accordance with the requirements of BS EN 1634-1, suitable for use on timber fire doors upto 30 and 60 minutes

ANTI-LIGATURE TESTING

- Independently tested in accordance with DHF Technical Specification TS001:2013 Enhanced Requirements & Test Methods for Anti-Ligature Hardware and passed with the highest rating: A4 – 0.5mm ligature

TECHNICAL



IMPORTANT NOTICE:

Due to the nature of the design of Anti-Ligature products to pass TS001 testing, they offer limited dexterity within use. Always ensure to use locks and latches with lightweight springing on the latch and deadbolt followers to ensure ease of operation.

It is key to ensure accurate installation to prevent any binding issues and ensure locks and latches operate freely. Always test for freedom of operation after installation and adjust as necessary.

CODE	DESCRIPTION	FINISH
ZS-AL010-010-SSS	Anti-ligature knob on rose (int. & ext. set)	Satin Stainless
<div><div></div><div><p><b>For more information please contact us today:</b> ERA Home Security T/A Zoo Hardware, Unit B, Dukes Drive, Kingmoor Park North, Carlisle, Cumbria CA6 4SH <b>Call: 01228 672900</b> <b>Fax: 01228 672928</b> <b>Email: <a href="mailto:sales@zoo-hardware.co.uk">sales@zoo-hardware.co.uk</a></b> <b>Web: <a href="http://www.zoohardware.co.uk">www.zoohardware.co.uk</a></b></p></div><div></div></div>		

ZS-AL000/001 Series  
Anti-ligature Escutcheon Set



ZS-AL000-SSS

ZS-AL001-SSS

TECHNICAL SPECIFICATION

PRODUCT FEATURES

- **Diameter:** 55mm
- **Projection:** 10mm
- **Centres:** 38mm
- **Material:** Grade 304 Stainless Steel
- Blind and Euro profile escutcheon sets available
- Security bolt fixings supplied

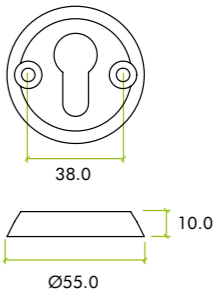
FIRE TESTING

- Successfully fire tested in accordance with the requirements of BS EN 1634-1, suitable for use on timber fire doors upto 30 and 60 minutes

ANTI-LIGATURE TESTING

- Independently tested in accordance with DHF Technical Specification TS001:2013 Enhanced Requirements & Test Methods for Anti-Ligature Hardware and passed with the highest rating: A4 – 0.5mm ligature

TECHNICAL



CODE	DESCRIPTION	FINISH
ZS-AL000-SSS	Anti-ligature escutcheon set - No keyhole set (Blind)	Satin Stainless
ZS-AL001-SSS	Anti-ligature escutcheon set - Euro profile set	Satin Stainless
<div><div></div><div><p><b>For more information please contact us today:</b> ERA Home Security T/A Zoo Hardware, Unit B, Dukes Drive, Kingmoor Park North, Carlisle, Cumbria CA6 4SH <b>Call: 01228 672900</b> <b>Fax: 01228 672928</b> <b>Email: <a href="mailto:sales@zoo-hardware.co.uk">sales@zoo-hardware.co.uk</a></b> <b>Web: <a href="http://www.zoohardware.co.uk">www.zoohardware.co.uk</a></b></p></div><div></div></div>		

**ZS-AL008 Series**  
Anti-ligature Turn & Release Set



ZS-AL008

TECHNICAL SPECIFICATION

PRODUCT FEATURES

- **Diameter:** 55mm
- **Projection:** 10mm
- **Centres:** 38mm
- **Material:** Grade 304 Stainless Steel
- 5mm & 8mm spindle versions available
- Security bolt fixings supplied

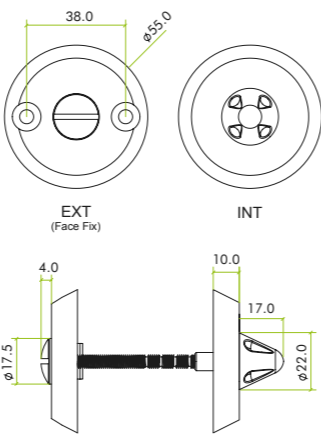
FIRE TESTING

- Successfully fire tested in accordance with the requirements of BS EN 1634-1, suitable for use on timber fire doors upto 30 and 60 minutes

ANTI-LIGATURE TESTING

- Independently tested in accordance with DHF Technical Specification TS001:2013 Enhanced Requirements & Test Methods for Anti-Ligature Hardware and passed with the highest rating: A4 – 0.5mm ligature

TECHNICAL



IMPORTANT NOTICE:

Due to the nature of the design of Anti-Ligature products to pass TS001 testing, they offer limited dexterity within use. Always ensure to use locks and latches with lightweight springing on the latch and deadbolt followers to ensure ease of operation.

It is key to ensure accurate installation to prevent any binding issues and ensure locks and latches operate freely. Always test for freedom of operation after installation and adjust as necessary.

**ANTI-LIGATURE**  
**PRODUCT RANGE**



For more information or to place an order  
please contact our helpful sales team:

**Call:** 01228 672900

**Fax:** 01228 672928

**Email:** [sales@zoo-hardware.co.uk](mailto:sales@zoo-hardware.co.uk)

**or visit** [www.zoohardware.co.uk](http://www.zoohardware.co.uk)

CODE	DESCRIPTION	FINISH
ZS-AL008-5-SSS	Anti-ligature turn & release - 5mm spindle	Satin Stainless
ZS-AL008-8-SSS	Anti-ligature turn & release - 8mm spindle	Satin Stainless
<div><div></div><div><p><b>For more information please contact us today:</b> ERA Home Security T/A Zoo Hardware, Unit B, Dukes Drive, Kingmoor Park North, Carlisle, Cumbria CA6 4SH</p><p><b>Call:</b> 01228 672900 <b>Fax:</b> 01228 672928 <b>Email:</b> <a href="mailto:sales@zoo-hardware.co.uk">sales@zoo-hardware.co.uk</a> <b>Web:</b> <a href="http://www.zoohardware.co.uk">www.zoohardware.co.uk</a></p></div><div></div></div>		



Unit B, Dukes Drive,  
Kingmoor Park North,  
Carlisle, Cumbria,  
CA6 4SH.

T : +44 (0) 1228 672 900  
F : +44 (0) 1228 672 928  
E : [sales@zoo-hardware.co.uk](mailto:sales@zoo-hardware.co.uk)  
W : [www.zoohardware.co.uk](http://www.zoohardware.co.uk)

