



## Grade 316



## Introduction

Eurospec is a brand of Carlisle Brass used for commercially orientated hardware.

Eurospec levers are designed to provide beautifully engineered stainless steel door hardware for the specification market. This contemporary range of external door furniture and associated products can be used for both commercial and residential projects.

Eurospec brand products include:

- High specification hinges
- Door control mechanisms
- Panic hardware
- Cylinder locks
- Mortice locks and latches

Carlisle Brass Ltd. is an ISO 9001 and ISO 14001 certified company, which means that Eurospec branded products are fully traceable from point of manufacture to customer and that the environmental impact is being constantly measured and improved.

Accredited products carrying the Eurospec brand are stringently tested to ensure they comply to the latest regulations, which makes Eurospec branded products the ideal choice for the professional installer, architect or specifier.



## Grade 316

### Welcome to the Carlisle Brass Grade 316 Product Brochure

The manufacture of 'Stainless Steel' or Inox is over a century old, the name originally coined by Sheffield Steel manufacturers.

The 316 grade is an chromium-nickel-molybdenum austenitic stainless steel. The addition of higher percentages of Nickel and molybdenum greatly improves the corrosion resistance of standard 201/304 grades used in hardware, making it the preferred option for products fitted in external locations.

Carlisle brass has brought together it's extensive range of 316 Grade hardware into one easy to use brochure.

### Care and Cleaning

Even high performance materials like 316 Stainless require occasional cleaning to remove surface contaminants that may impair the normal corrosion resistance of the material. Stainless steel is protected from corrosion by a thin layer of chromium oxide. Oxygen from the atmosphere combines with the chromium in the stainless steel to protect against corrosion. surface dust dirt, or other material, hinders this process so routine cleaning advised to maintain appearance.

Regular dusting is required. Occasional light wash with a mild detergent solution to degrease, dry thoroughly to remove any water marks.

If required use a PTFE based spray to clean any harder to remove contaminants, then clean as directed by dusting, mild detergent etc.



Contents

Window Fittings ..... Page 4

Grade 4 Levers on Rose ..... Page 7

Grade 316 Levers on Backplate .....Page 11

External Door Furniture ..... Page 13

Grade 316 Pull Handles ..... Page 17

High Specification Hinges ..... Page 21

Bathroom ..... Page 23



Window Fittings

- Traditional and modern window fittings for sash and casement applications
- Suited products and finishes throughout the range
- Products available for weather stripped and UPVC frames

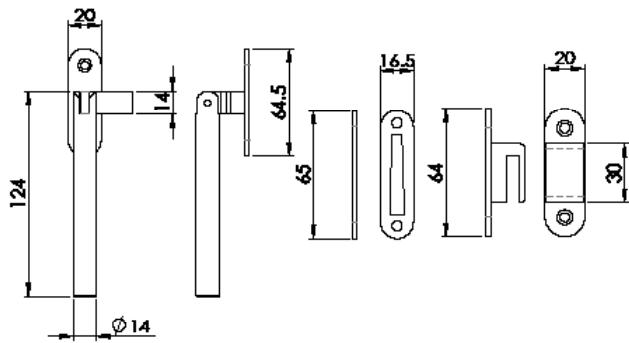


**WF21**

Round Casement Fastener  
Complete with hook  
plate and flat keep

(Suitable for weather  
stripped windows)

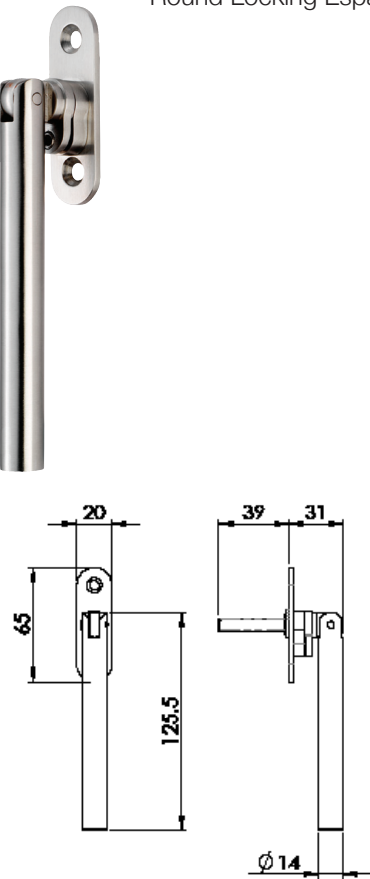
SS



**WF25**

Round Locking Espag Fastener

SS



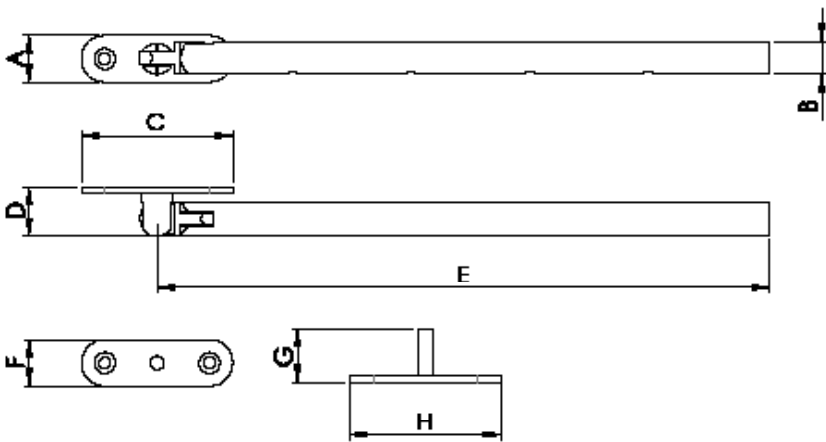
**WF22S**

Round Casement Stay

**WF23**

**WF24**

SS



|       | A  | B  | C  | D  | E   | F  | G  | H    |
|-------|----|----|----|----|-----|----|----|------|
| WF22S | 20 | 14 | 65 | 21 | 263 | 20 | 23 | 64.5 |
| WF23  | 20 | 14 | 65 | 21 | 213 | 20 | 23 | 64.5 |
| WF24  | 20 | 14 | 65 | 21 | 315 | 20 | 23 | 64.5 |



SW4150SSS

## Grade 4 Levers on Rose

- Comprehensive and industry leading range of sprung door furniture
- Perfect for nursing and residential homes, hospitals, schools and hotels
- Ideal where doors are subject to frequent and vigorous usage
- 25 year mechanical guarantee reflecting the use of the highest quality GRADE 316 stainless steel
- Independently tested to severe Grade 4 under BS EN 1906
- Levers are suitable for use to BS8300 - 2:2018 guidelines
- Product is tested to 1080 hours of corrosion protection
- Features thread locked fixings, case-hardened spindle and cup-point grub screws to ensure strong fixing



BS EN 1906:2012 is the European standard covering the performance requirements and test methods (i.e. durability, static strength, operating torque, corrosion, safety, etc.) for sprung and unsprung lever handles and knobs for doors on backplates or roses. It applies only to lever handles and knobs that operate a lock or latch. The standard has 4 grades of performance. Compliance with the standard ensures a margin of strength in excess of that needed for normal operation. The standard has additional graded safety requirements where a high risk of failing exists.

Digit 5 - Safety

Grade 0: Normal use  
Grade 1: Safety application – to qualify for this grade, handles must have high strength handle to plate and plate to door fixing, and/or handle to spindle fixing, such that they would withstand a person grabbing in order to prevent falling.

Digit 1 - Category of Use

Grade 1: Medium frequency of use with a high incentive to exercise care and small chance of misuse.  
Grade 2: Medium frequency of use with some incentive to exercise care but there is some chance of misuse.  
Grade 3: High frequency of use by public or others with little incentive to exercise care and with a high chance of misuse.  
Grade 4: High frequency of use on doors which are subject to frequent violent use.

Digit 6 - Corrosion Resistance

Grade 0: No defined corrosion resistance  
Grade 1: Mild resistance – minimum requirement for internal use.  
Grade 2: Moderate resistance.  
Grade 3: High resistance – minimum resistance for external use.  
Grade 4: Very high resistance- recommended for use in exposed marine atmospheres or very polluted industrial environments.  
Note: Products intended to develop a natural patina (bronze or brass) are not required to comply with any requirements.

3

7

-

C

1

4

0

B

Digit 2 - Durability

Grade 6: Medium use – 100,000 cycles  
Grade 7: High use – 200,000 cycles

Digit 3 - Test Door Mass

No requirement

Digit 4 - Fire Resistance

Grade 0: No performance determined.  
Grade A: For use on smoke control doors.  
Grade A1: For use on smoke control doors, tested with 200,000 cycles on a test door.  
Grade B: For use on smoke control and fire resistant doors.  
Grade B1: For use on smoke control and fire resistant doors, tested with 200,000 cycles on a test door.  
Grade C: For use on smoke control and fire resistant doors with requirements for fire protection inlays in backplate, rose and escutcheon.  
Grade C1: For use on smoke control and fire resistant doors with requirements for fire protection inlays in backplate, rose and escutcheon, tested with 200,000 cycles on a test door.

Note: Grades B or C means that the furniture has been included in at least one fire/smoke door test. This is not an indication that the furniture can be used on any fire/smoke door.



**SW4123**  
Safety Lever

SSS



Technical drawing showing dimensions: Ø55, Ø19, 73, 8, 145, 55.



Icons: Wheelchair, BS EN 1906, Fire, 25 Year Guarantee.



**SW4125**  
Mitred Lever

SSS



Technical drawing showing dimensions: Ø55, Ø19, 76, 8, 128.



Icons: Checkmark, Fire, 25 Year Guarantee.



**SW4150**  
Grade 4 DDA Compliant Lever

SSS



Technical drawing showing dimensions: Ø55, Ø19, 83, 8, 159, 70.



Icons: Wheelchair, BS EN 1906, Fire, 25 Year Guarantee.

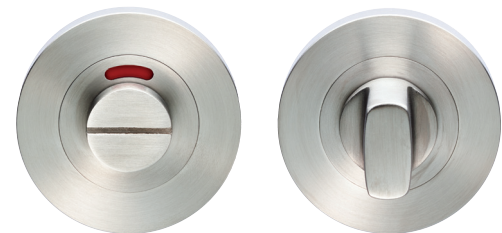
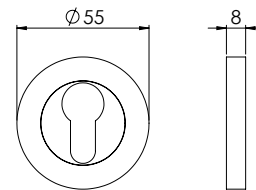






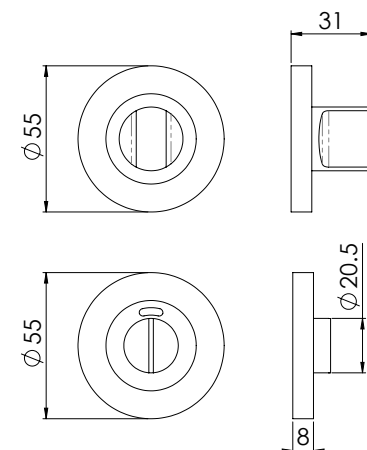
**SW4102**  
Euro Escutcheon

SSS



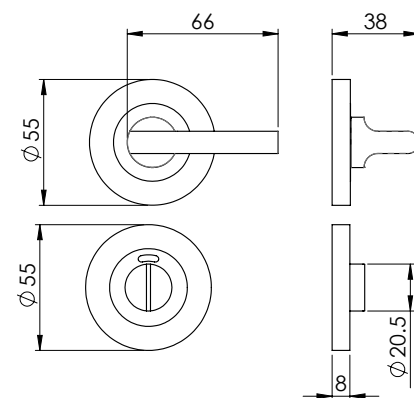
**SWT4105-I**  
Thumbturn & Release  
With indicator

SSS

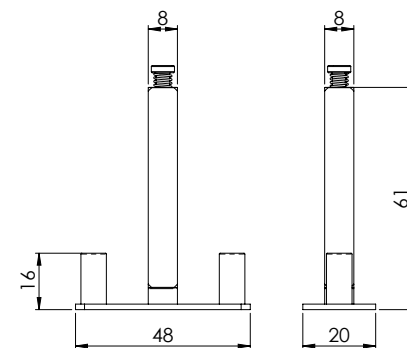


**SWT4107-I**  
Thumbturn & Release  
With indicator

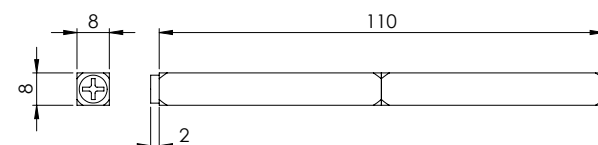
SSS



**ALP5038**  
Half set fixing plate for  
bolt through furniture



**ASS5100**  
Special split spindle  
with locking feature



## Grade 316 Levers on Backplate

The entire product is of GRADE 316 architectural quality; lever, cover, inner and cam to withstand frequent and vigorous use

Perfect for retro-fit jobs

Secure heso spindle and bolt through fixings

Available in euro and DIN centres

25 year mechanical guarantee

Fire rated

Performance tested to 200,000 cycles

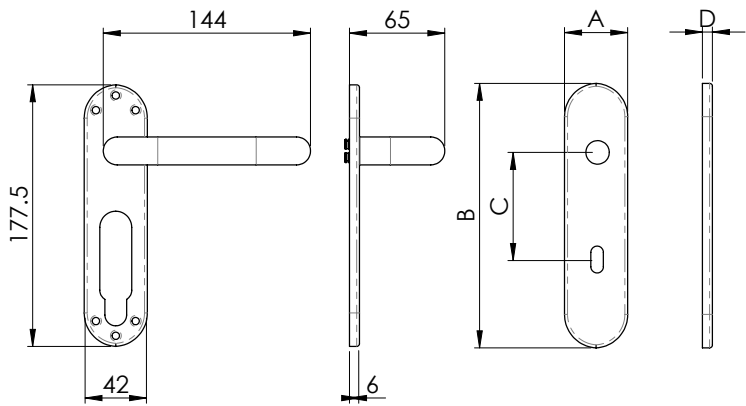
Made to last whatever the weather

Suitable for residential and commercial use





SWLP123 + SWOB



SWLP123  
Safety Lever on Inner Plate



SWOB

Latch Plate

| A  | B   | C   | D |
|----|-----|-----|---|
| 45 | 180 | N/A | 7 |

SWOE

Euro Plate - 47.5 c/c

|    |     |      |   |
|----|-----|------|---|
| 45 | 180 | 47.5 | 7 |
|----|-----|------|---|

SWOT-I

UK Bathroom Plate - 57 c/c & Turn

|    |     |    |   |
|----|-----|----|---|
| 45 | 180 | 57 | 7 |
|----|-----|----|---|

SWOP

Lock Plate

|    |     |    |   |
|----|-----|----|---|
| 45 | 180 | 57 | 7 |
|----|-----|----|---|

SWOE/72

Euro Plate - Din 72 c/c (Suitable for use with DIN lock)

|    |     |    |   |
|----|-----|----|---|
| 45 | 180 | 72 | 7 |
|----|-----|----|---|

SWOT-I/78

Bathroom Plate - Din 78 c/c (Suitable for use with DIN lock)

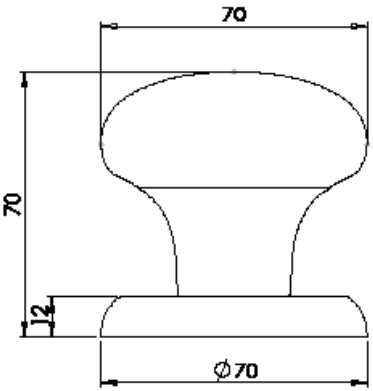
|    |     |    |   |
|----|-----|----|---|
| 45 | 180 | 78 | 7 |
|----|-----|----|---|

# External Door Furniture

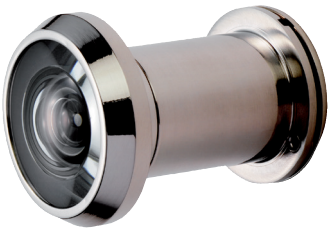
- Our external door furniture range will create a welcoming appearance
- Full range of products for your front door
- Classic designs to suit all tastes
- Made to last using durable finishes whatever the weather



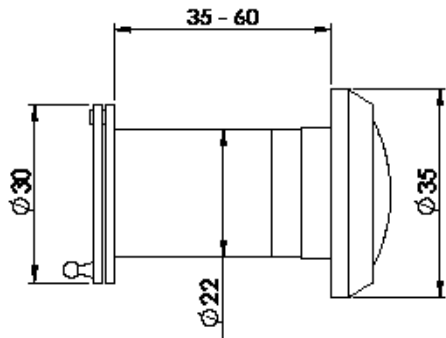
**SWE1040**  
Centre Door Knob Grade 316



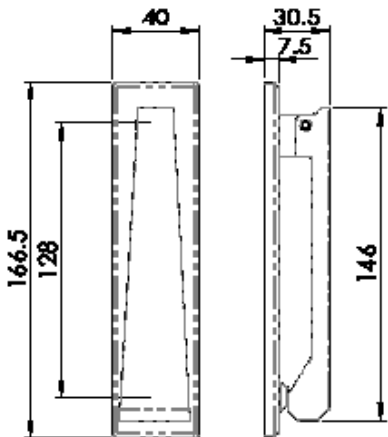
**SWE1010**  
Door Viewer Grade 316  
Suits doors 35-60mm thick



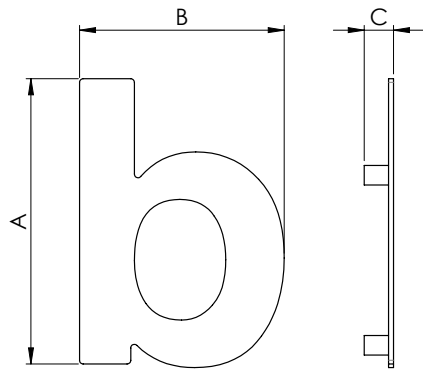
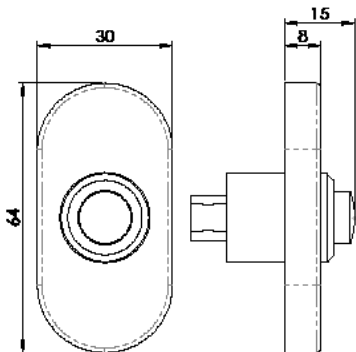
**SWE1011**  
Extension sleeve suits  
doors up to 100mm thick



**SWE1020**  
Door Knocker Grade 316



**SWE1030**  
Bell Push Grade 316



|                   |             | A     | B     | C  |     |     |
|-------------------|-------------|-------|-------|----|-----|-----|
| <b>LET1090A</b>   | Letter a    | 89    | 80    | 12 | BSS | SSS |
| <b>LET1090B</b>   | Letter b    | 117.5 | 84    | 12 | BSS | SSS |
| <b>LET1090C</b>   | Letter c    | 89    | 79.5  | 12 | BSS | SSS |
| <b>NUM10170</b>   | Numeral 0   | 178   | 119.5 | 12 | BSS | SSS |
| <b>NUM10171</b>   | Numeral 1   | 178   | 78.5  | 12 | BSS | SSS |
| <b>NUM10172</b>   | Numeral 2   | 178   | 120   | 12 | BSS | SSS |
| <b>NUM10173</b>   | Numeral 3   | 178   | 119   | 12 | BSS | SSS |
| <b>NUM10174</b>   | Numeral 4   | 178   | 125   | 12 | BSS | SSS |
| <b>NUM10175</b>   | Numeral 5   | 178   | 120   | 12 | BSS | SSS |
| <b>NUM10176/9</b> | Numeral 6/9 | 178   | 119.5 | 12 | BSS | SSS |
| <b>NUM10177</b>   | Numeral 7   | 178   | 128   | 12 | BSS | SSS |
| <b>NUM10178</b>   | Numeral 8   | 178   | 119.5 | 12 | BSS | SSS |

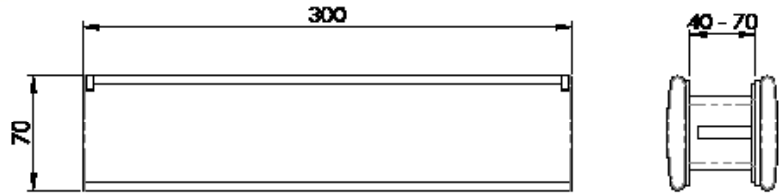






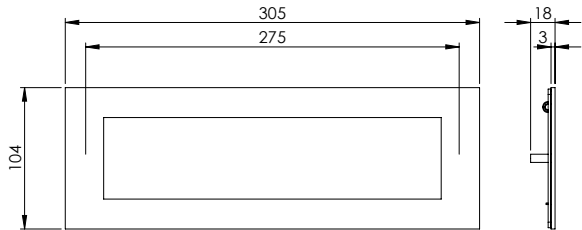
**SWE1050**  
Sleeved Letter Plate  
Suits doors up to 70mm

BSS SSS

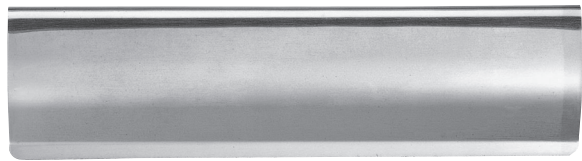


**SWE1036D**  
Grade 316 Narrowstyle Letterplate

SSS



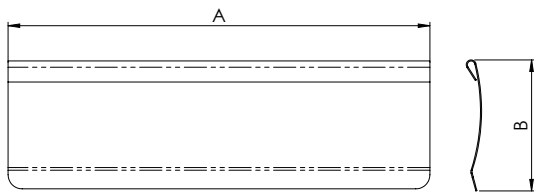
**AA53**  
Recommended with this product



Letter Tidy - Curved Pattern

**AA53**

SS

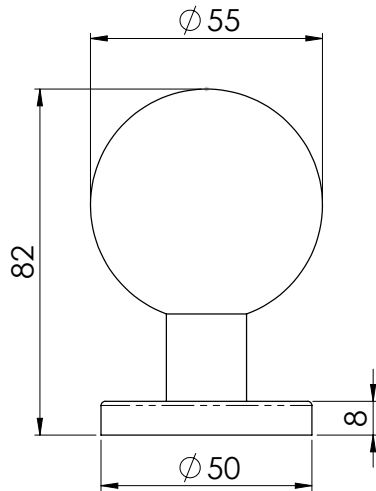


**AA53**    **A** 280    **B** 78



**SWKNR1058**  
Grade 316 Knob on Rose

SSS



**PFT1300SSS**



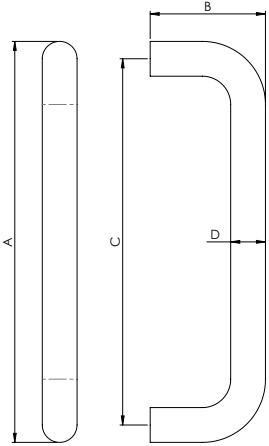
# Grade 316 Pull Handles

- Various bar diameters and lengths ◀
- Perfect for environments where the doors are subject to frequent and vigorous use ◀
- Fire-rated ◀
- 25 year mechanical guarantee ◀



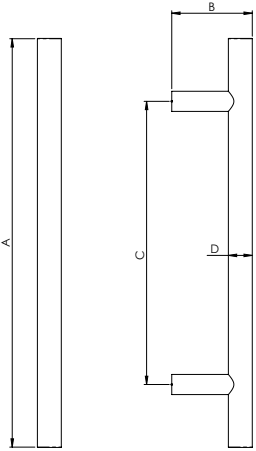
D Pull Handle

|          | A    | B  | C    | D  |         |
|----------|------|----|------|----|---------|
| PAD1150  | 169  | 65 | 150  | 19 | BSS SSS |
| PAD1225  | 244  | 65 | 225  | 19 | BSS SSS |
| PAD1300  | 319  | 65 | 300  | 19 | BSS SSS |
| PAD1450  | 469  | 65 | 450  | 19 | SSS     |
| PAD1600  | 619  | 65 | 600  | 19 | SSS     |
| PFD1225  | 247  | 67 | 225  | 22 | SSS     |
| PFD1300  | 322  | 67 | 300  | 22 | SSS     |
| PBD1225  | 250  | 70 | 225  | 25 | SSS     |
| PBD1300  | 325  | 70 | 300  | 25 | BSS SSS |
| PBD1450  | 475  | 70 | 450  | 25 | SSS     |
| PCD1450  | 480  | 75 | 450  | 30 | SSS     |
| PCD1600  | 630  | 75 | 600  | 30 | SSS     |
| PCD11800 | 1830 | 75 | 1800 | 30 | SSS     |



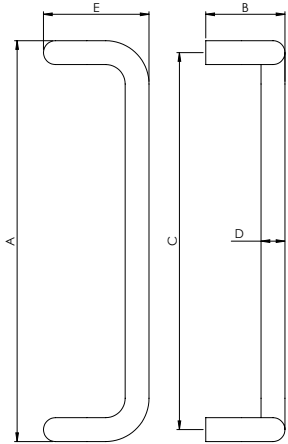
T Pull Handle

|          | A    | B  | C    | D  |         |
|----------|------|----|------|----|---------|
| PAT1225  | 325  | 65 | 225  | 19 | BSS SSS |
| PAT1300  | 400  | 65 | 300  | 19 | SSS     |
| PFT1225  | 325  | 67 | 225  | 22 | SSS     |
| PFT1300  | 400  | 67 | 300  | 22 | BSS SSS |
| PBT1300  | 420  | 70 | 300  | 25 | SSS     |
| PCT1450  | 600  | 70 | 450  | 30 | BSS SSS |
| PCT1600  | 775  | 70 | 600  | 30 | SSS     |
| PCT1900  | 1070 | 70 | 900  | 30 | SSS     |
| PCT11200 | 1200 | 70 | 1000 | 30 | SSS     |
| PCT11800 | 1800 | 70 | 1630 | 30 | BSS SSS |



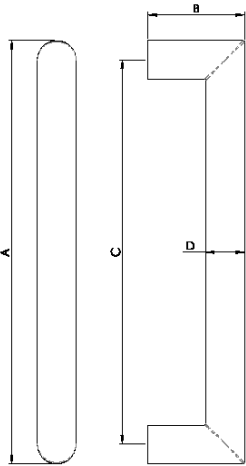
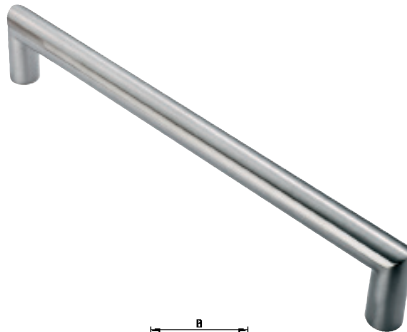
Cranked Pull Handle

|         | A   | B  | C   | D  | E   |         |
|---------|-----|----|-----|----|-----|---------|
| PAC1225 | 244 | 65 | 225 | 19 | 90  | SSS     |
| PAC1300 | 319 | 65 | 300 | 19 | 90  | BSS SSS |
| PAC1600 | 619 | 65 | 600 | 19 | 90  | SSS     |
| PFC1300 | 322 | 65 | 300 | 22 | 90  | SSS     |
| PBC1300 | 325 | 80 | 300 | 25 | 100 | SSS     |
| PCC1450 | 480 | 80 | 450 | 30 | 140 | SSS     |
| PCC1600 | 630 | 80 | 600 | 30 | 140 | SSS     |



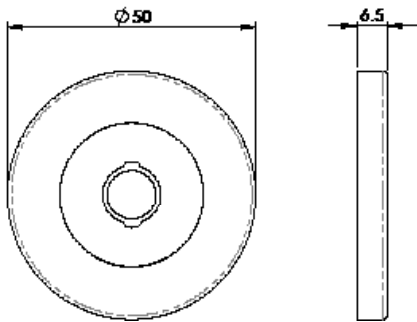
Mitred Pull Handle

|         | A   | B  | C   | D  |     |
|---------|-----|----|-----|----|-----|
| PAM1225 | 244 | 65 | 225 | 19 | SSS |
| PAM1300 | 319 | 65 | 300 | 19 | SSS |
| PCM1450 | 480 | 75 | 450 | 30 | SSS |
| PCM1600 | 630 | 75 | 600 | 30 | SSS |

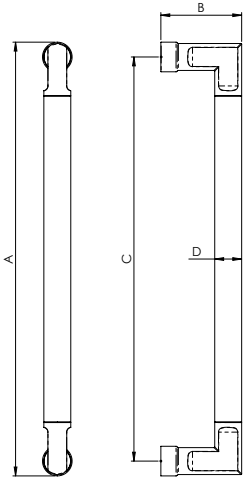


SW134  
Rose Kit

BSS SSS

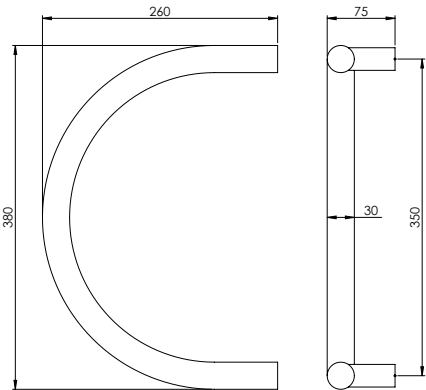


Carbon Fibre Pull Handle

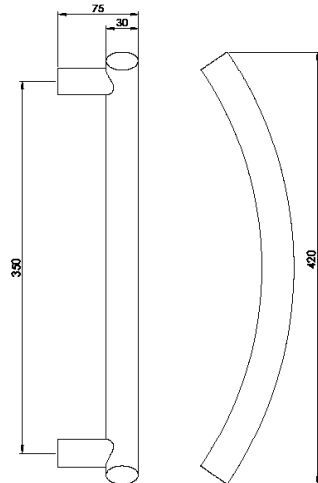


|           | A   | B  | C   | D  |     |
|-----------|-----|----|-----|----|-----|
| SWP18/300 | 322 | 60 | 300 | 20 | SSS |
| SWP18/600 | 620 | 60 | 600 | 20 | SSS |

PCG1350SSS-B-B  
Semi Circular Pull Handle



PCTS1350  
Curved T Pull Handle



# High Specification Hinges

- Comprehensive selection of hinges
- Encompassing CE and ball bearing options to concealed, piano and steel butt hinges
- Domestic or specialist options for additional weight bearing capability
- Our product selection suits any commercial or residential property

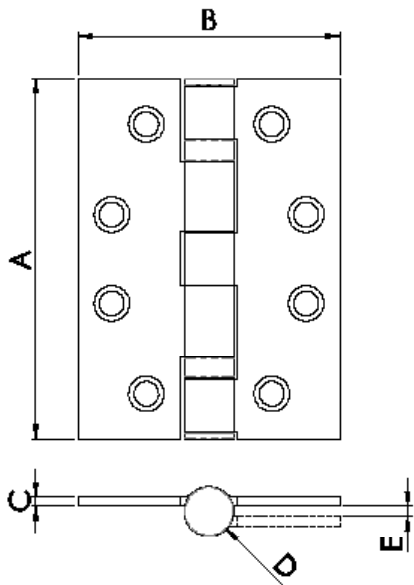
## Grade 14

- 25 year mechanical guarantee reflecting the use of the highest architectural stainless steel
- Entire range is CE marked, Certifire approved and fire and metal door tested
- Intumescent hinge packs are paired with the respective hinges to ensure the products adhere to the latest fire standards

## Grade 13 and Grade 11

- 25 year mechanical guarantee reflecting the use of the highest architectural stainless steel
- Entire range is CE marked and fire tested
- Intumescent hinge packs are paired with the respective hinges to ensure the products adhere to the latest fire standards





|            | A   | B   | C | D  | E    |
|------------|-----|-----|---|----|------|
| CEN1433/13 | 76  | 102 | 3 | 14 | 2.75 |
| CEN1443/13 | 102 | 102 | 3 | 14 | 2.75 |

CEN1433/13  
\*CEN1443/13  
Grade 13 CE Bearing Hinge



CEN1433/13/R  
Radius



\*CEN1443/13/R  
Radius



120Kg  
Max Loading

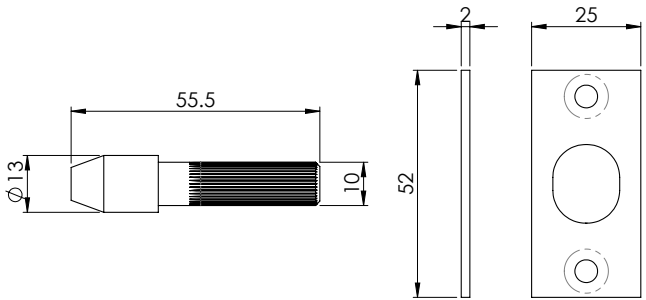
INT1433  
INT1443  
Intumescent Hinge Pack

\*Not suitable for  
use on FD30



| EN 1935:2002 |   |   |   |   |   |      |
|--------------|---|---|---|---|---|------|
| 4            | 7 | 6 | 1 | 1 | 4 | 0 13 |

AHB1000G316  
Security Hinge Bolt Set  
Grade 316



LX22MB



# Bathroom

Contemporary and traditional styles <>  
Designed to enhance any domestic environment <>





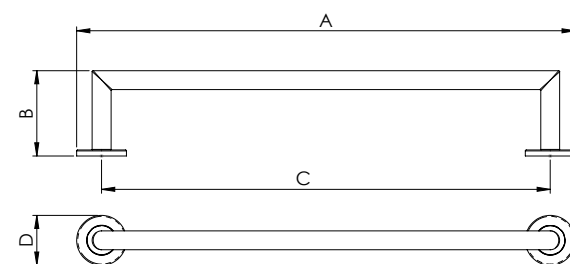
**LX21**  
GRADE 316  
Single Towel Rail

BSS SS

**LX22**

New New

BSS MB SPVD SS



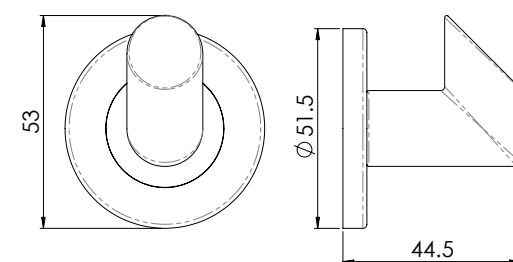
|             | A   | B  | C   | D    |
|-------------|-----|----|-----|------|
| <b>LX21</b> | 450 | 85 | 400 | 51.5 |
| <b>LX22</b> | 650 | 85 | 600 | 51.5 |



**LX03**  
GRADE 316  
Robe Hook

New New

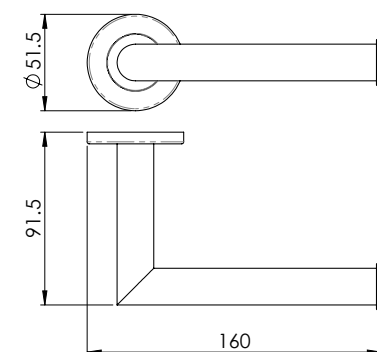
BSS MB SPVD SS



**LX07**  
GRADE 316  
Paper Holder

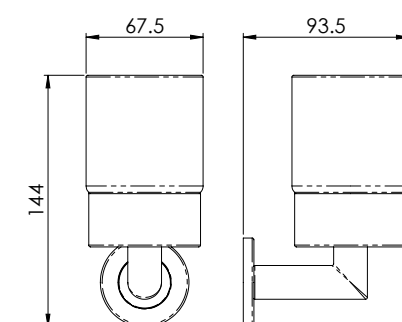
New New

BSS MB SPVD SS



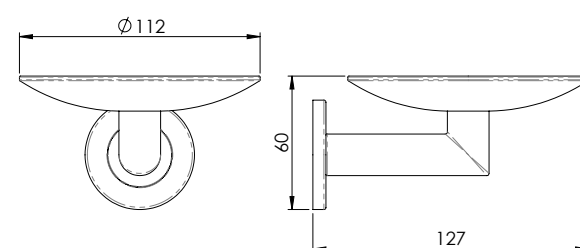
**LX12**  
GRADE 316  
Single Tumbler Holder

SS



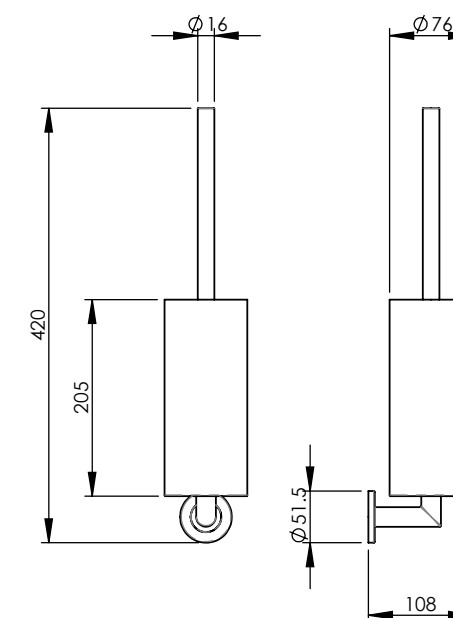
**LX13**  
GRADE 316  
Soap Dish

SS



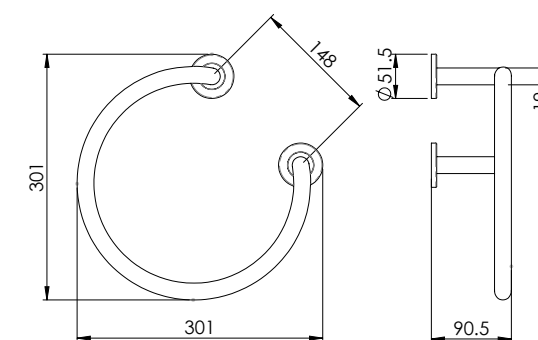
**LX14**  
GRADE 316  
Toilet Brush and Holder

SS



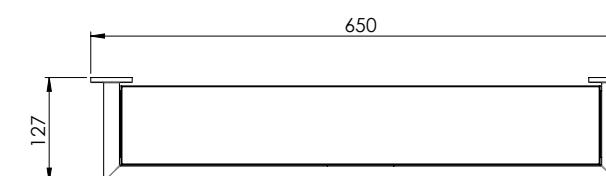
**LX05**  
GRADE 316  
Towel Ring

SS



**LX25**  
GRADE 316  
Glass Shelf

SS











+44 1228 511030

Carlisle Brass Ltd, Parkhouse Road, Carlisle, CA3 0JU

enquiries@carlislebrass.com

www.carlislebrass.com

