



Serozzetta



SZC Range



 **Face-fix levers on backplate**

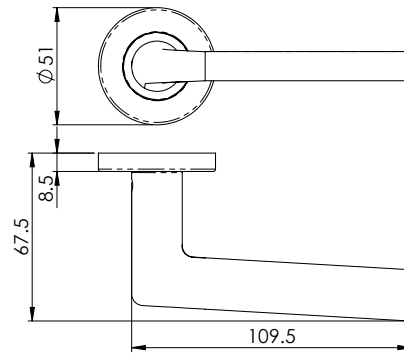
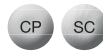
 **Levers on push-on-rose**

 **Zinc lever range**

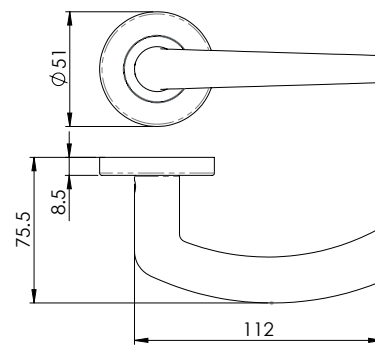




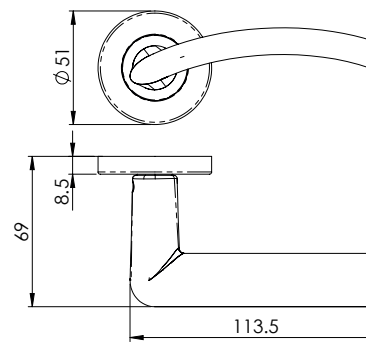
SZC010
Uno



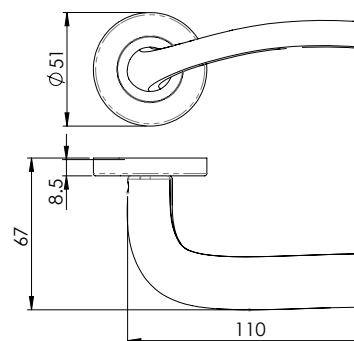
SZC020
Dos



SZC030
Tres

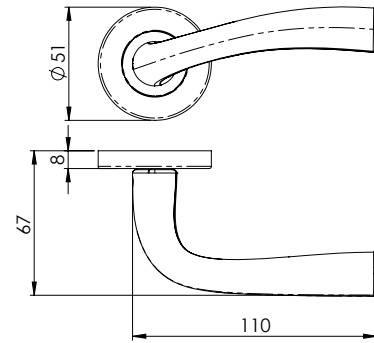


SZC040
Cuatro

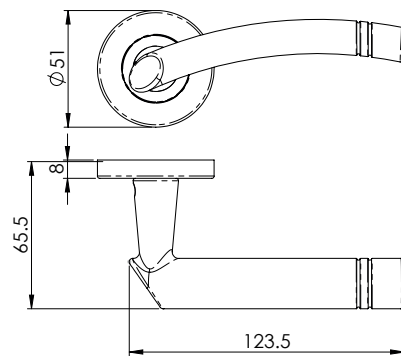




SZC050
Cinco



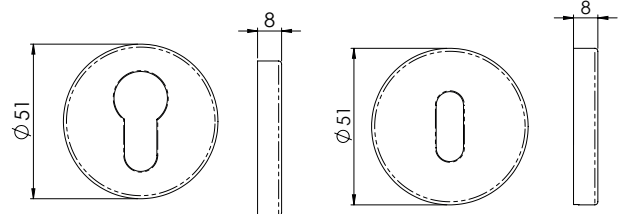
SZC340
Cuarenta



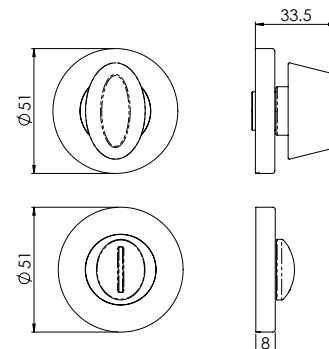
SZC001
Euro Escutcheon



SZC003
Lock Escutcheon



SZC004
Thumbturn & Release





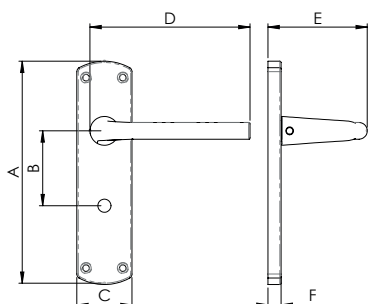
SZC011Y
Uno on Euro Backplate



SZC011
Lock

SZC012
Latch

SZC013
Bathroom



	A	B	C	D	E	F
SZC011	170	57	41.5	110	69	10
SZC011Y	170	47.5	41.5	110	69	10
SZC012	170	-	41.5	110	69	10
SZC013	170	57	41.5	110	69	10



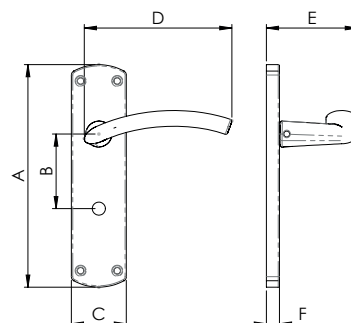
SZC032
Tres on Latch Backplate



SZC031Y
Euro

SZC031
Lock

SZC033
Bathroom



	A	B	C	D	E	F
SZC031	170	57	41.5	113	69	10
SZC031Y	170	47.5	41.5	113	69	10
SZC032	170	-	41.5	113	69	10
SZC033	170	57	41.5	113	69	10



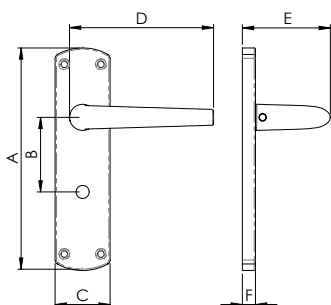
SZC023
Dos on Bathroom Backplate



SZC021
Lock

SZC021Y
Euro

SZC022
Latch



	A	B	C	D	E	F
SZC021	170	57	41.5	112.5	75.5	10
SZC021Y	170	47.5	41.5	112.5	75.5	10
SZC022	170	-	41.5	112.5	75.5	10
SZC023	170	57	41.5	112.5	75.5	10



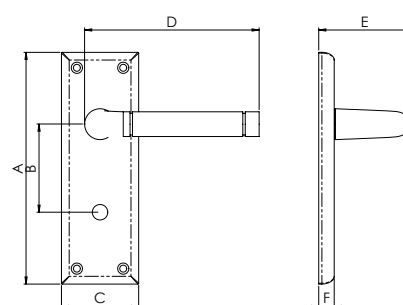
SZC042
Cuatro on Latch Backplate



SZC041
Lock

SZC041Y
Euro

SZC043
Bathroom



	A	B	C	D	E	F
SZC041	170	57	41.5	110	69	10
SZC041Y	170	47.5	41.5	110	69	10
SZC042	170	-	41.5	110	69	10
SZC043	170	57	41.5	110	69	10



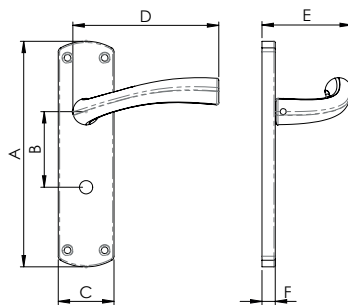
SZC053
Cinco on Bathroom Backplate



SZC051
Lock

SRC051Y
Euro

SZC052
Latch



	A	B	C	D	E	F
SZC051	170	57	41.5	110	68.5	10
SZC051Y	170	47.5	41.5	110	68.5	10
SZC052	170	-	41.5	110	68.5	10
SZC053	170	57	41.5	110	68.5	10



We continue our Planet Mark journey...



Continuing our packaging project to eliminate plastic, improve recyclability, and reduce packaging sizes. In turn reducing the number of containers we ship.



Migrating our company vehicles to EV and hybrid models, as well as installing on-site charging points.



Switching to North West Recycling we are diverting the majority of our waste from landfill.



Switching carriers to DPD, who are committed to rolling out all-electric delivery vehicles.




Optimising our website performance to reduce the amount of CO2 emissions per-click.



Following a 10.4 % absolute reduction we will continue measuring carbon and social data to reduce emissions and achieve the UN Sustainable Development Goals.

carlislebrass.com/sustainability





Empowering *CHANGE* for a brighter future



PlanetMark



Packaging Reduction Initiative

Reducing the amount of plastic, packaging, and recyclable waste within door hardware sector is very important, along with reducing container shipment.

Example initiatives;

- Reducing size of individual boxes and outer cartons to suit product
- Removal of plastic within final distribution of products

Reducing size of individual boxes and outer cartons to suit highest volume stainless steel commercial lever range – reduced the individual boxes and outer cartons by 50%.

- Freed up 51 pallet spaces within a distribution centre
- Created more than 50% in shipping container space for stock orders
- Reduced the amount of cardboard to be recycled by contractors/end users

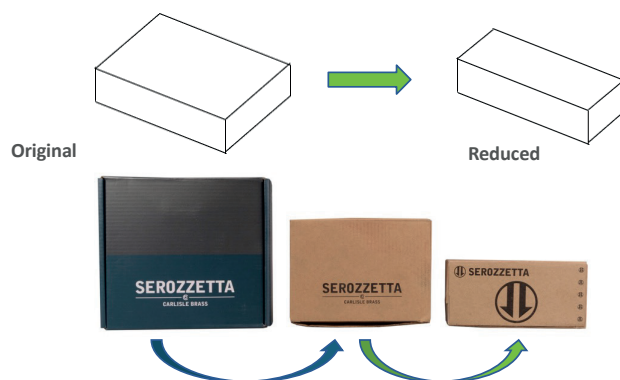
Removal of plastic within final distribution of products.

Introduced void fill machines, to replace the previously used plastic air pockets.

Paper gum parcel tape to replace the plastic parcel tape wherever possible, and pallet wrapping machines that only uses the exact amount to wrap the pallet.

Reducing size of individual boxes and outer cartons to suit product.

We aim to be plastic free and work back from here as a start:



- 50% smaller individual box size, and altered dimensions for outer boxes
- Reducing the amount of cardboard to be recycled by contractors/ end users, reduce our waste and reduce our shipping costs – All going toward reducing our Footprint!

Supply Chain Sustainability School

Since January 2018, Carlisle Brass were the first door hardware supplier in the industry to receive Gold recognition status by Supply Chain Sustainability School.

This recognition is a result of Carlisle Brass maintaining transparency within our supply chain and meeting all requirements on house builder's supplier evaluation packs.

We work closely with all our suppliers, dedicated to carrying out supplier evaluations, audits, pre-shipment inspections, and reporting on supplier KPIs.





SCAN ME

 **SEROZZETTA**  **EUROLITE**  **ALEXANDER & WILKS**  **EUROSPEC**  **MANITAL**

Carlisle Brass Ltd, Parkhouse Road, Carlisle, Cumbria, CA3 0JU

enquiries@carlislebrass.com | Sales: 01228 511030 | Reception: 01228 511770 | Company Registration Number: 2022858

carlislebrass.com