

THE BLACK CATALOGUE

Featuring products from these ranges:



Many of these products are available in other finishes.
Please check our website for details:

www.frelanhardware.co.uk



2	KEY TO SYMBOLS
3	DOOR HANDLES & MORTICE KNOBS
20	PULL HANDLES & PUSH PLATES
33	FLUSH PULLS & EDGE PULLS
36	LOCKS & LATCHES
41	ESCUTCHEONS
45	TURN & RELEASES
49	CABINET FURNITURE
61	ACCESSORIES
69	HINGES



Certifire is an independent third party certification scheme that assures performance, quality, reliability and traceability of products. Recognised by regulatory authorities worldwide.



Disability discrimination act compliant



30 minute fire doors



UK conformity assessment mark



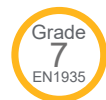
60 minute fire doors



European health, safety and environmental protection conformity



30/60 minute fire doors



30/60/120 minute fire doors



30/60/240 minute fire doors



Grade 201 stainless steel



Grade 304 stainless steel

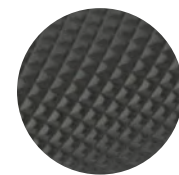


Grade 316 stainless steel

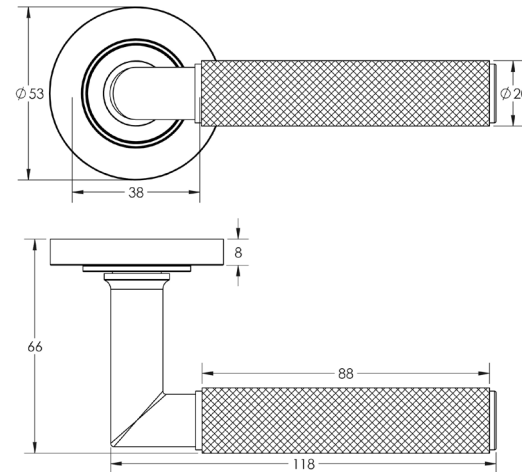
DOOR HANDLES — & — MORTICE KNOBS

PICCADILLY LEVER ON ROUND ROSE

Product Code: **BUR40KIT326**

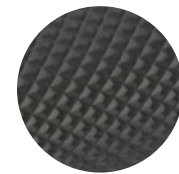


- Diamond knurled handle grip
- Sprung
- Solid brass
- Grade 4 corrosion
- Part of the Burlington range

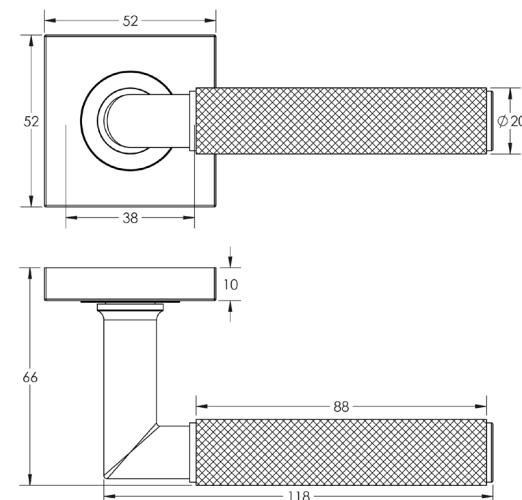


PICCADILLY LEVER ON SQUARE ROSE

Product Code: **BUR40KIT331**



- Diamond knurled handle grip
- Sprung
- Solid brass
- Grade 4 corrosion
- Part of the Burlington range

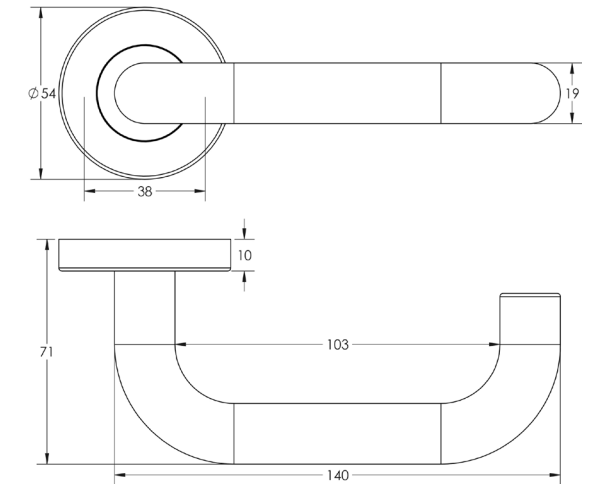


ORBIT LEVER ON ROSE

Product Code: **JMB13**

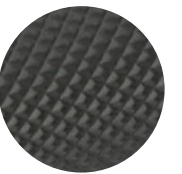


- Sprung
- Stainless steel
- Grade 4 corrosion
- Part of the Nero range

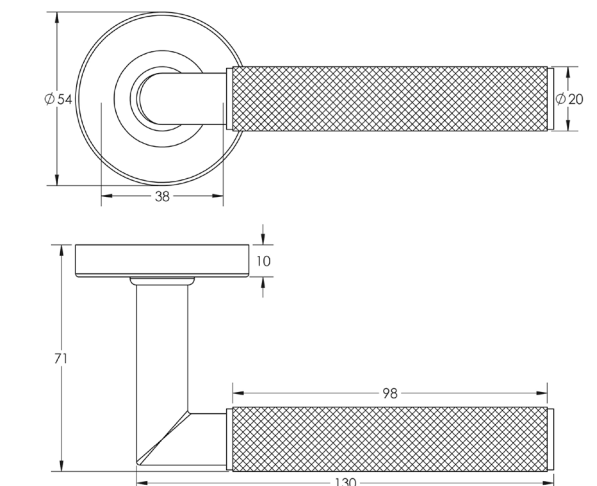


KNURLED LEVER ON ROSE

Product Code: **JMB401**

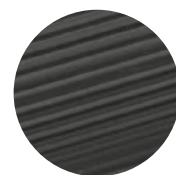


- Diamond knurled handle grip
- Sprung
- Stainless steel
- Grade 5 corrosion
- PVD finish
- Part of the Three One Six range

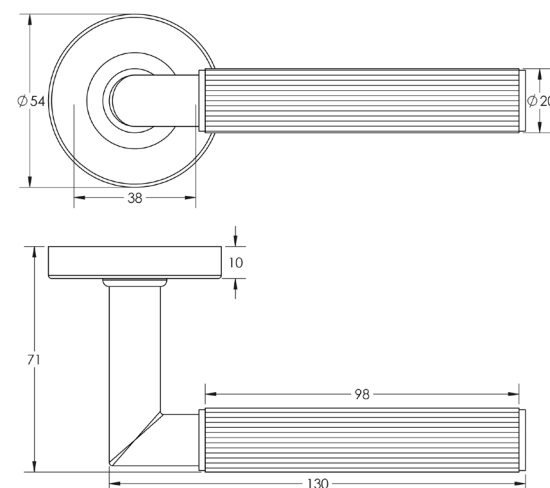


LINEAR LEVER ON ROSE

Product Code: **JMB402**

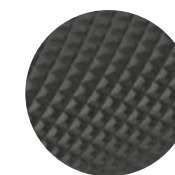


- Linear handle grip
- Sprung
- Stainless steel
- Grade 5 corrosion
- PVD finish
- Part of the Three One Six range

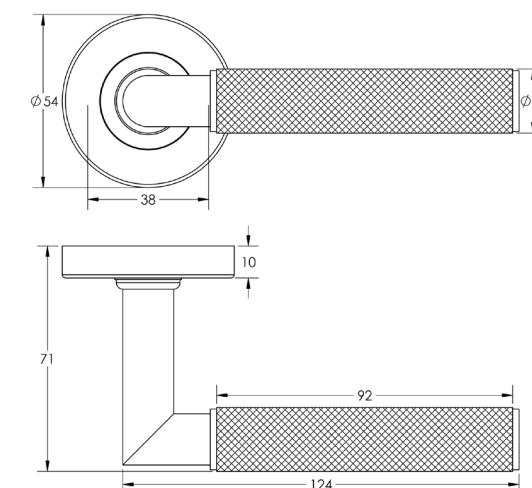


MITRED KNURLED LEVER ON ROSE

Product Code: **JMB400**

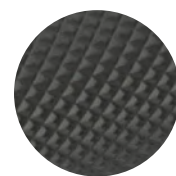
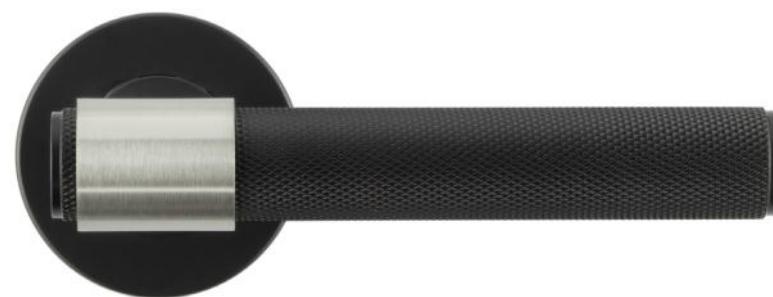


- Diamond knurled handle grip
- Sprung
- Stainless steel
- Grade 4 corrosion
- Part of the Nero range

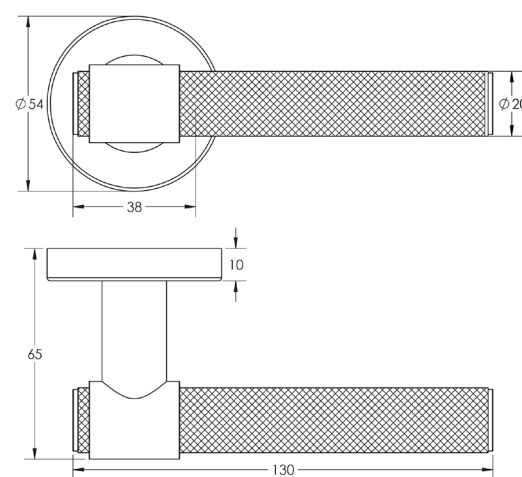


T-BAR KNURLED LEVER ON ROSE

Product Code: **JMB105**



- Diamond knurled handle grip
- Sprung
- Stainless steel
- Grade 4 corrosion
- Part of the Nero range



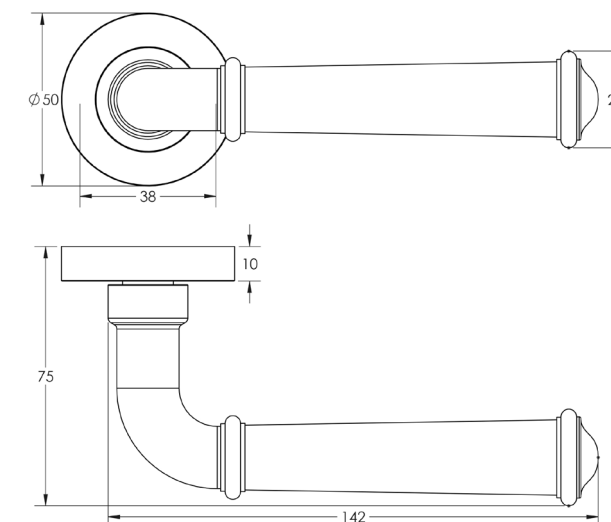


CLASSIC LEVER ON ROSE

Product Code: **JV847MB**



- Sprung
- Aluminium
- Grade 4 corrosion
- Part of the Jedo range

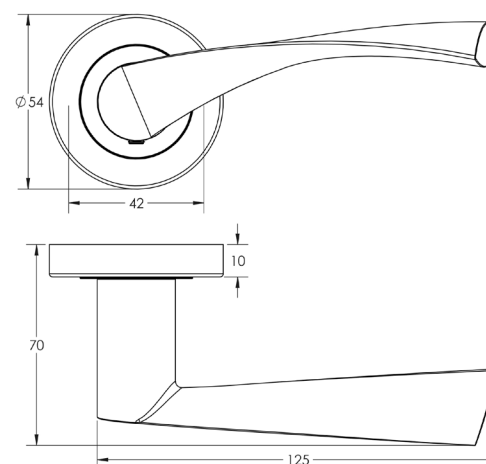


VECTA LEVER ON ROSE

Product Code: **JMB501**



- Sprung
- Stainless steel
- Grade 4 corrosion
- Part of the Nero range

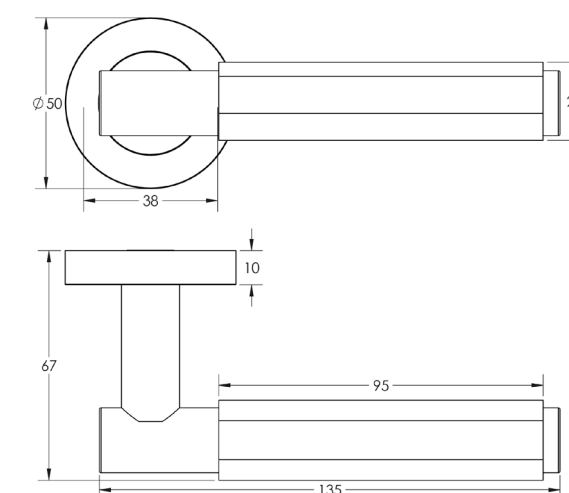


BLOOM LEVER ON ROSE

Product Code: **JV848MB**



- Sprung
- Aluminium
- Grade 4 corrosion
- Part of the Jedo range

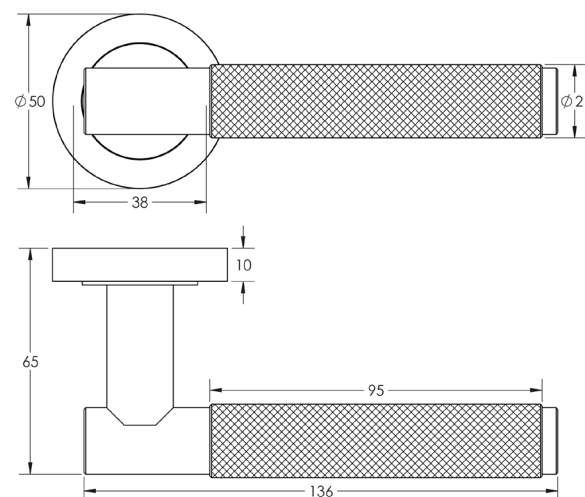


BARI LEVER ON ROSE

Product Code: **JV850MB**



- Diamond knurled handle grip
- Sprung
- Aluminium
- Grade 5 corrosion
- Part of the Jedo range

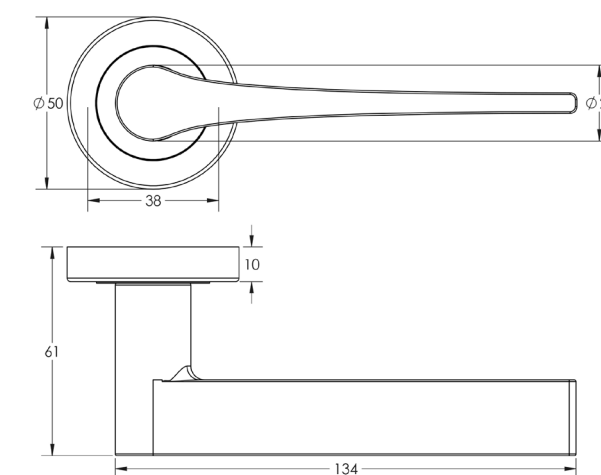


GEO LEVER ON ROSE

Product Code: **JV851MB**



- Sprung
- Aluminium
- Grade 4 corrosion
- Part of the Jedo range

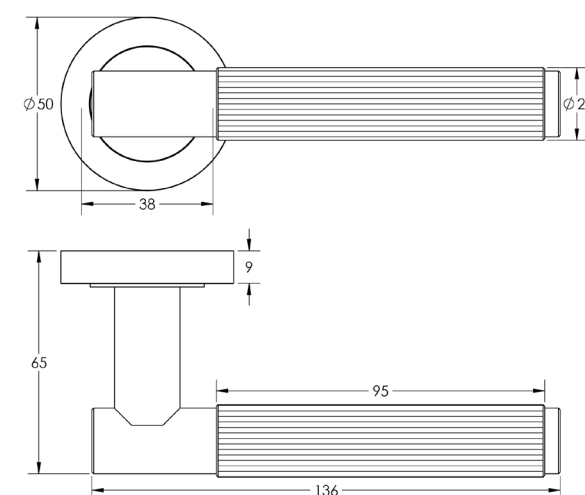


VENICE LEVER ON ROSE

Product Code: **JV852MB**



- Linear knurled handle grip
- Sprung
- Aluminium
- Grade 5 corrosion
- Part of the Jedo range



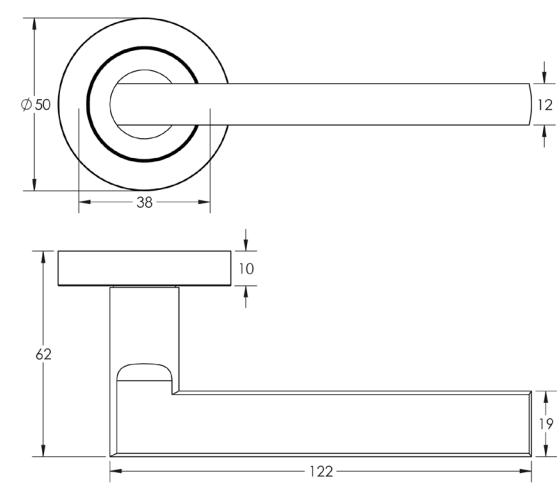


JET LEVER ON ROSE

Product Code: **JV600MB**



- Sprung
- Aluminium
- Grade 4 corrosion
- Part of the Nero range

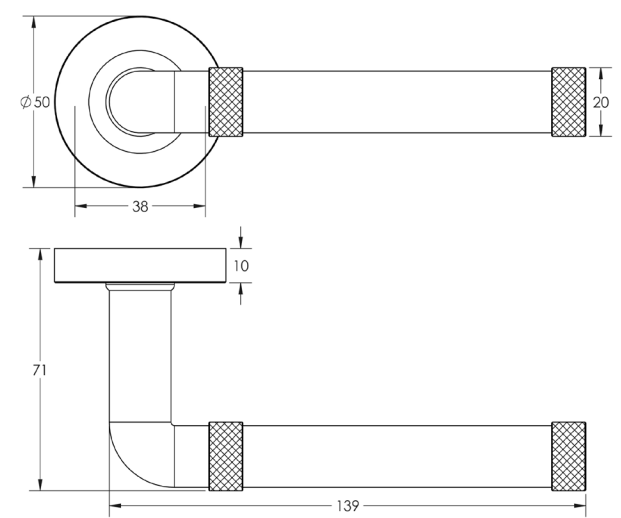


MIDTOWN LEVER ON ROSE

Product Code: **JV853MB**



- Sprung
- Aluminium
- Grade 4 corrosion
- Part of the Jedo range

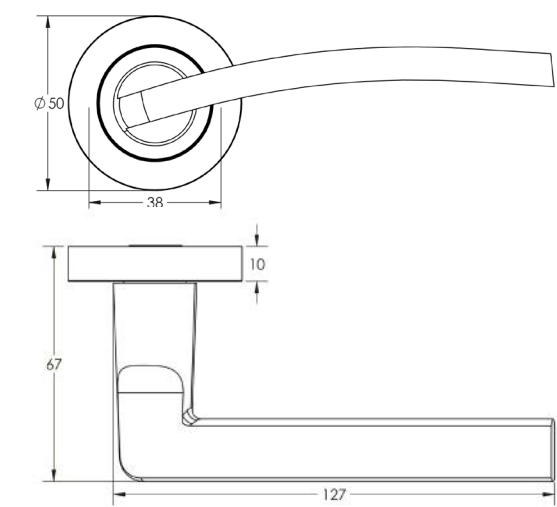


NOIR LEVER ON ROSE

Product Code: **JMB700**

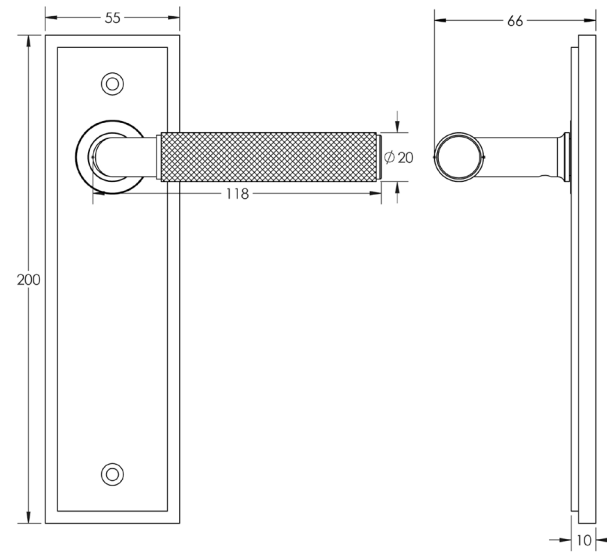


- Sprung
- Aluminium
- Grade 4 corrosion
- Part of the Nero range



PICCADILLY LEVER ON LATCH PLATE

Product Code: **BUR40KIT333**

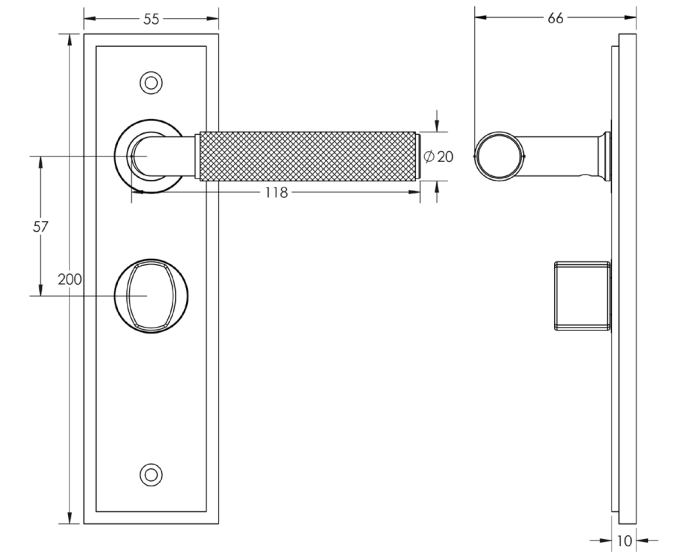


- Latch plate
- Diamond knurled handle grip
- Sprung
- Solid brass
- Grade 4 corrosion
- Part of the Burlington range



PICCADILLY LEVER ON BATHROOM PLATE

Product Code: **BUR-40MB-453MB-81MB**

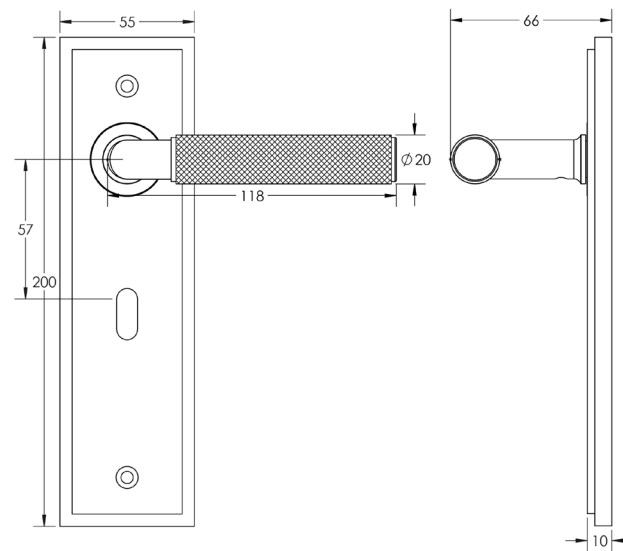


- Bathroom plate - 57mm centres
- Diamond knurled handle grip
- Sprung
- Solid brass
- Grade 4 corrosion
- Part of the Burlington range



PICCADILLY LEVER ON LOCK PLATE

Product Code: **BUR40KIT334**

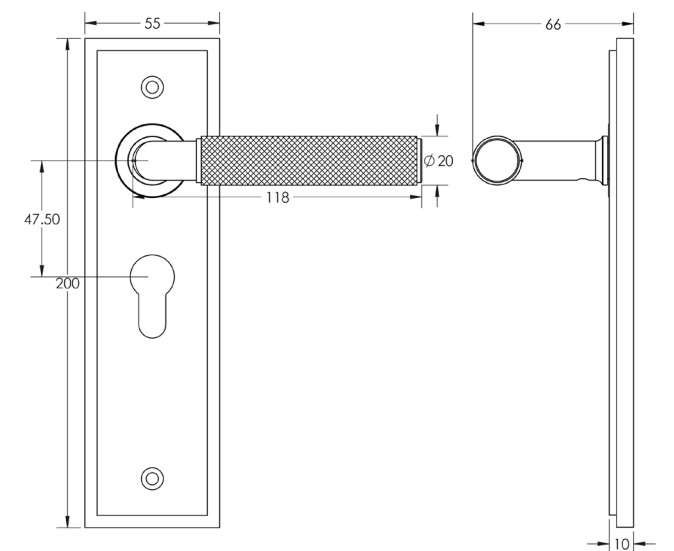


- Standard lock plate
- Diamond knurled handle grip
- Sprung
- Solid brass
- Grade 4 corrosion
- Part of the Burlington range



PICCADILLY LEVER ON EURO LOCK PLATE

Product Code: **BUR40KIT336**

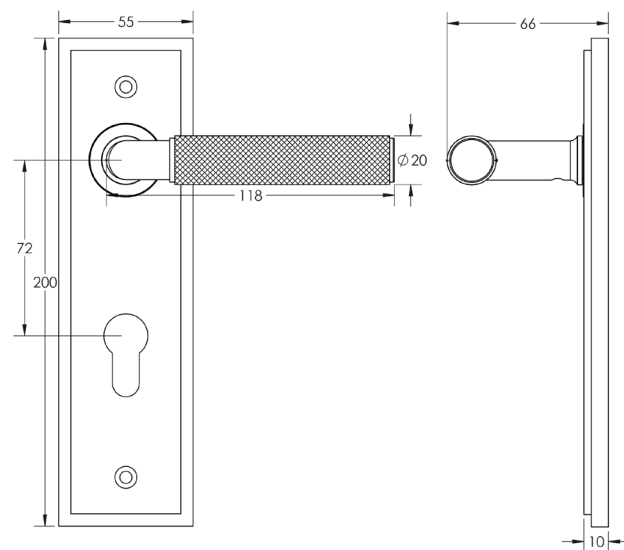


- Euro lock plate - 47.5mm centres
- Diamond knurled handle grip
- Sprung
- Solid brass
- Grade 4 corrosion
- Part of the Burlington range



PICCADILLY LEVER ON EURO LOCK PLATE

Product Code: **BUR40KIT337**

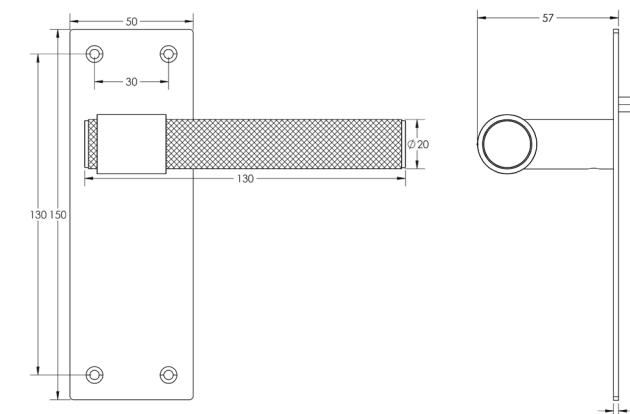
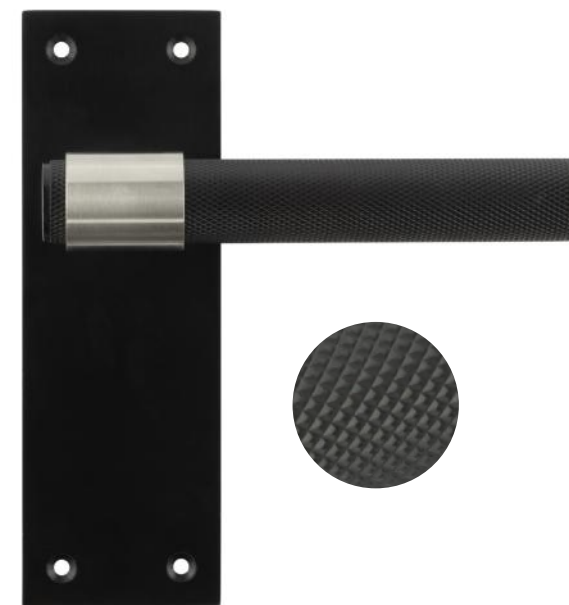


- Euro lock plate - 72mm centres
- Diamond knurled handle grip
- Sprung
- Solid brass
- Grade 4 corrosion
- Part of the Burlington range



T-BAR LEVER ON LATCH PLATE

Product Code: **JMB100**

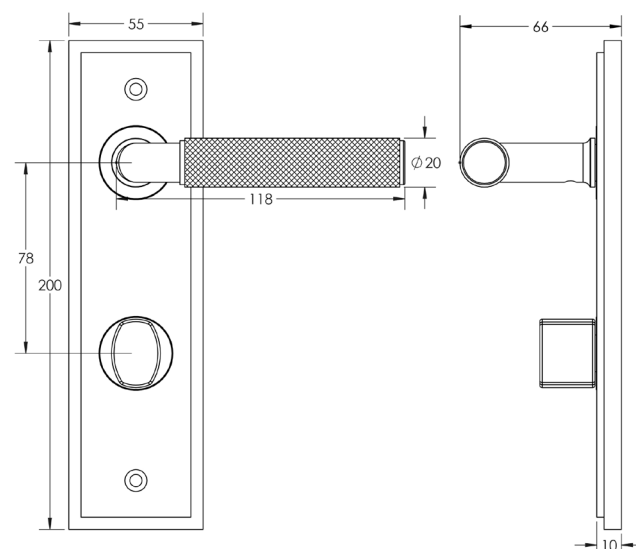


- Latch plate
- Diamond knurled handle grip
- Sprung
- Stainless steel
- Part of the Nero range



PICCADILLY LEVER ON BATHROOM PLATE

Product Code: **BUR-40MB-456MB-81MB**

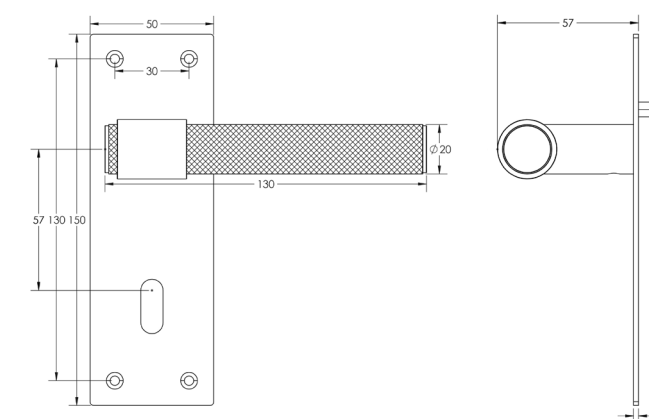
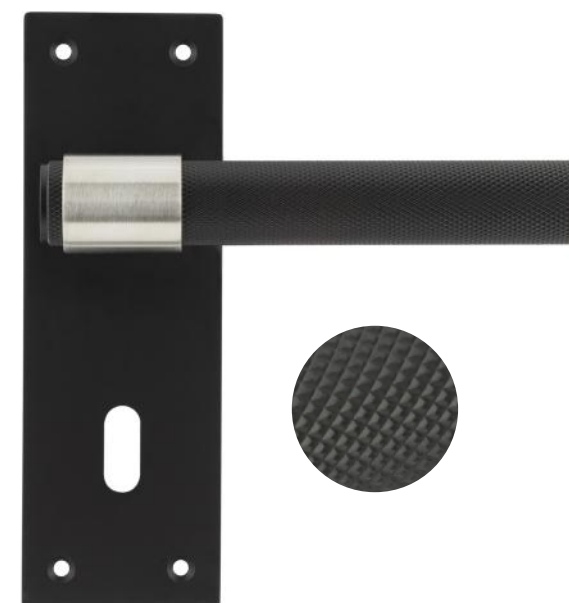


- Bathroom plate - 78mm centres
- Diamond knurled handle grip
- Sprung
- Solid brass
- Grade 4 corrosion
- Part of the Burlington range



T-BAR LEVER ON LOCK PLATE

Product Code: **JMB101**

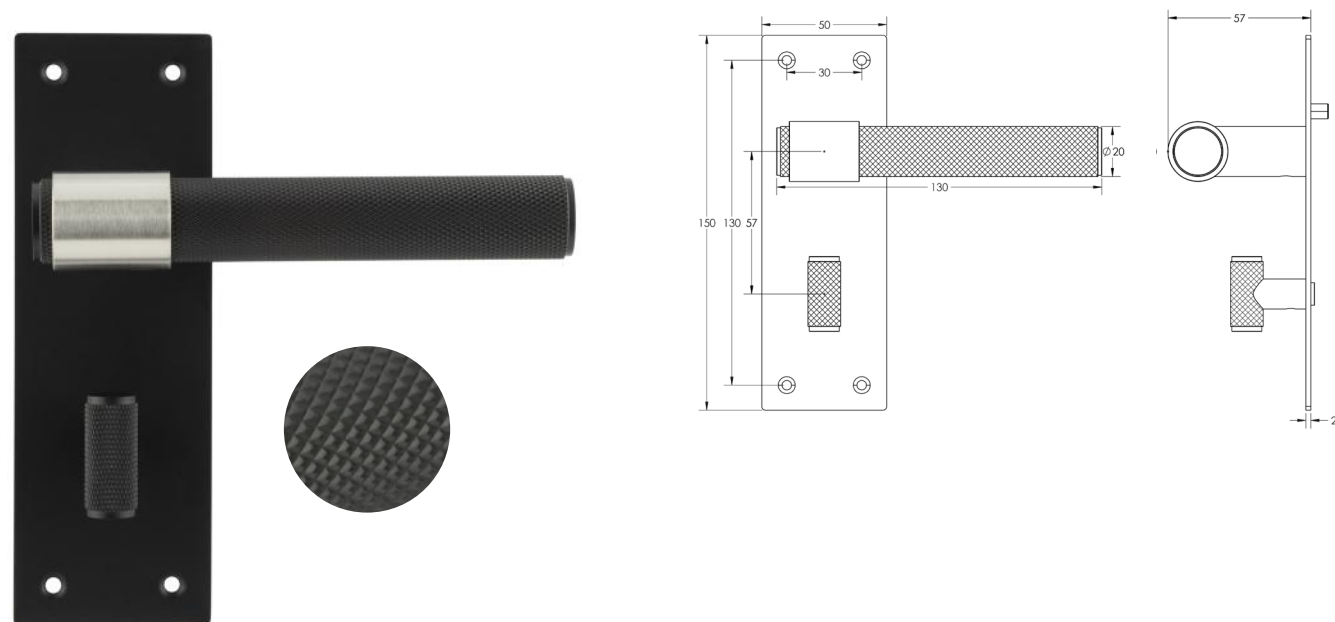


- Standard keyway
- Diamond knurled handle grip
- Sprung
- Stainless steel
- Part of the Nero range



T-BAR LEVER ON BATHROOM PLATE

Product Code: **JMB102**

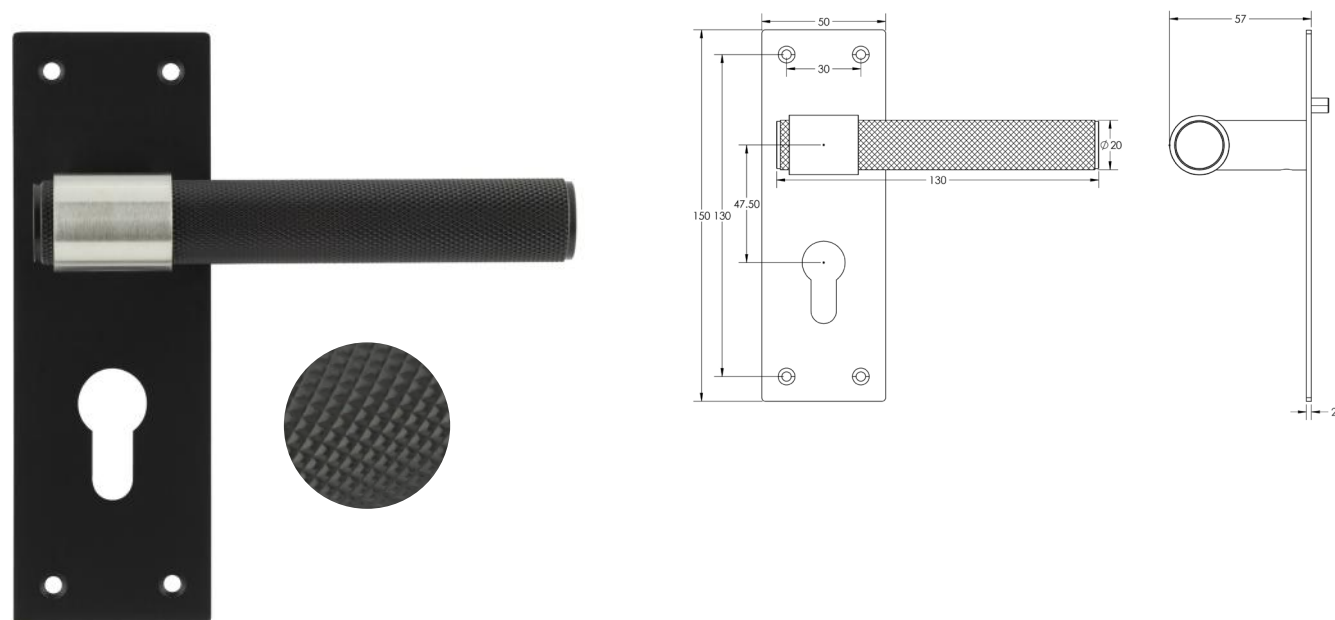


- Bathroom turn plate - 57mm centres
- Diamond knurled handle grip
- Sprung
- Stainless steel
- Part of the Nero range



T-BAR LEVER ON EURO LOCK PLATE

Product Code: **JMB103**



- Euro keyway - 47.5mm centres
- Diamond knurled handle grip
- Sprung
- Stainless steel
- Part of the Nero range

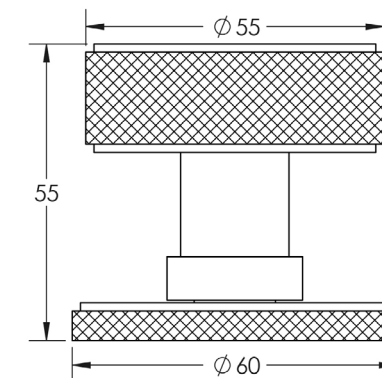


WESTBOURNE MORTICE KNOB

Product Code: **BUR102MB**



- Diamond knurled grip
- Solid brass
- Unsprung
- Part of the Burlington range

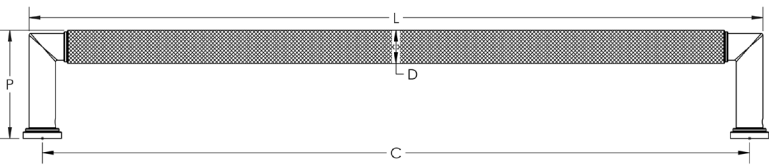
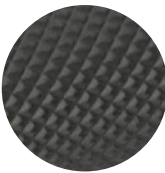


PULL HANDLES
&
PUSH PLATES

PICCADILLY PULL HANDLE



- Bolt through - Max door thickness: 60mm
- Face fix (FF) - Solid core door only
- Diamond knurled handle grip
- Solid brass
- Part of the Burlington range
- M8 thread

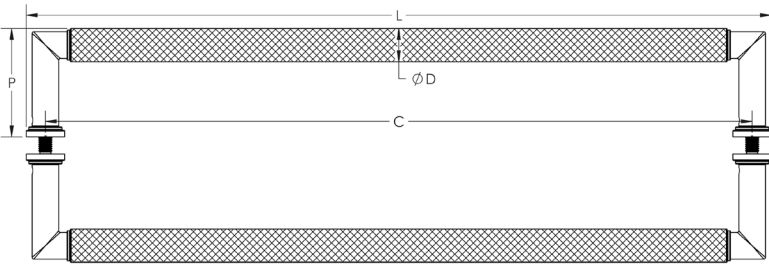


Product Code	Length (L)	Projection (P)	Centres (C)	Diameter (D)
BUR140MB	448mm	65mm	425mm	Ø20mm
BUR140MBFF	448mm	65mm	425mm	Ø20mm

PICCADILLY PULL HANDLE



- Back to back - Max door thickness: 65mm
- Diamond knurled handle grip
- Solid brass
- Part of the Burlington range
- M8 thread

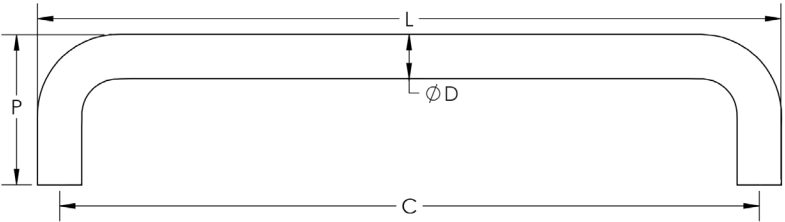


Product Code	Length (L)	Projection (P)	Centres (C)	Diameter (D)
BUR140MBB2B	448mm	65mm	425mm	Ø20mm




D SHAPE PULL HANDLE

- Bolt through - Max door thickness: 54mm
- Stainless steel
- Grade 4 corrosion
- Part of the Nero range
- M8 thread
- Compatible with JMB25 concealed rose



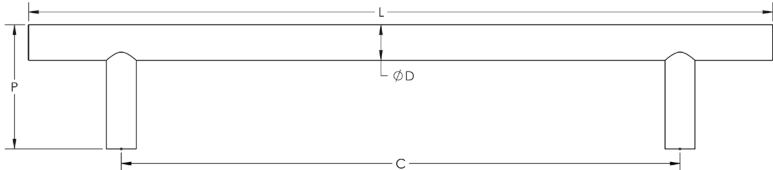
Product Code	Length (L)	Projection (P)	Centres (C)	Diameter (D)
JMB119C	319mm	64mm	300mm	Ø19mm






GUARDSMAN PULL HANDLE

- Bolt through - Max door thickness: 60mm
- Stainless steel
- Grade 4 corrosion
- Part of the Nero range
- M8 thread
- Optional roses included
- Compatible with JMB25 concealed rose
- Available in two sizes, see below chart for details



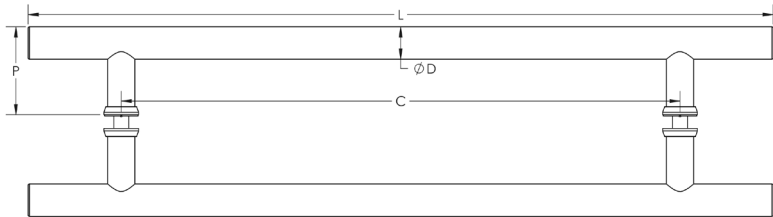
Grade 304

Product Code	Length (L)	Projection (P)	Centres (C)	Diameter (D)
JMB219B	400mm	67mm	300mm	Ø19mm
JMB222B	600mm	70mm	450mm	Ø25mm



GUARDSMAN PULL HANDLE


- Back to back - Max door thickness: 60mm
- Stainless steel
- Grade 4 corrosion
- Part of the Nero range
- M8 thread



Grade 304

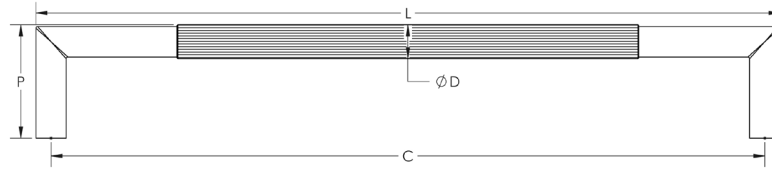
FIRE DOOR 30/60

Product Code	Length (L)	Projection (P)	Centres (C)	Diameter (D)
JMB223B	600mm	71mm	450mm	Ø25mm



LINEAR PULL HANDLE


- Bolt through - Max door thickness: 60mm
- Linear handle grip
- Stainless steel
- Grade 4 corrosion
- Part of the Nero range
- M8 thread
- Compatible with JMB25 concealed rose



Grade 304

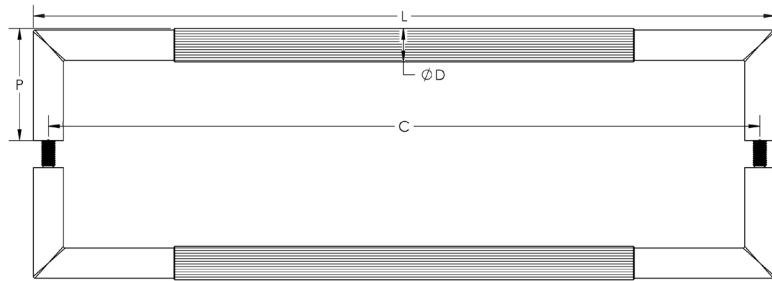
FIRE DOOR 30/60

Product Code	Length (L)	Projection (P)	Centres (C)	Diameter (D)
JMB6	443mm	67mm	425mm	Ø20mm



LINEAR PULL HANDLE

- Back to back - Max door thickness: 60mm
- Linear handle grip
- Stainless steel
- Grade 4 corrosion
- Part of the Nero range
- M8 thread
- Suitable for glass doors



Grade 304

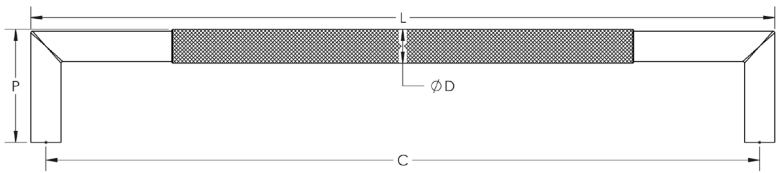
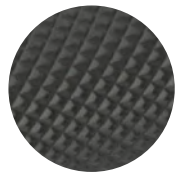
FIRE DOOR 30/60

Product Code	Length (L)	Projection (P)	Centres (C)	Diameter (D)
JMB7	443mm	67mm	425mm	Ø20mm

KNURLED PULL HANDLE



- Bolt through - Max door thickness: 54mm
- Diamond knurled handle grip
- Stainless steel
- Grade 4 corrosion
- Part of the Nero range
- M8 thread
- Compatible with JMB25 concealed rose

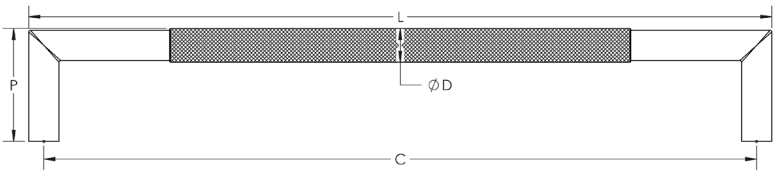
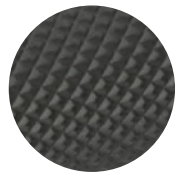


Product Code	Length (L)	Projection (P)	Centres (C)	Diameter (D)
JMB8	443mm	67mm	425mm	Ø20mm

KNURLED PULL HANDLE

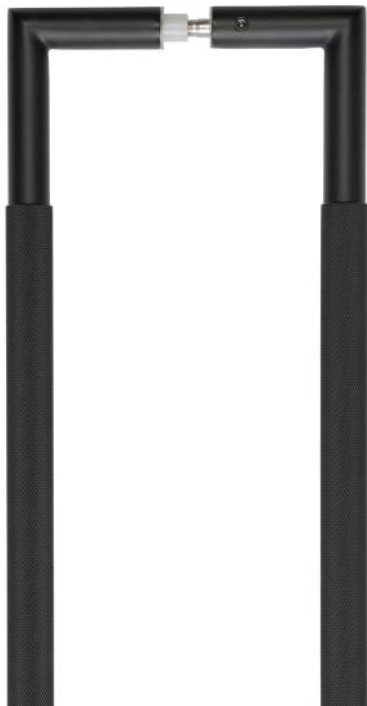


- Bolt through - Max door thickness: 60mm
- Diamond knurled handle grip
- Stainless steel
- Grade 5 corrosion
- PVD finish
- Part of the Three One Six range
- M8 thread
- Compatible with JMB25 concealed rose
- Available in two sizes, see below chart for details

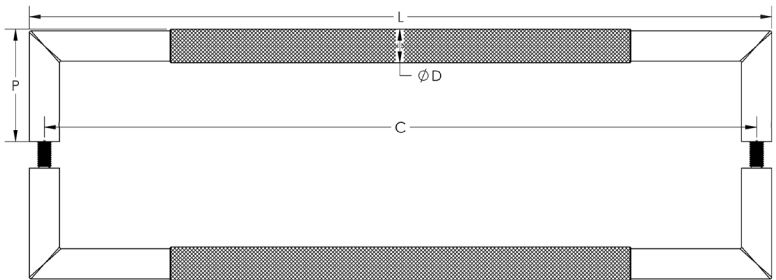


Product Code	Length (L)	Projection (P)	Centres (C)	Diameter (D)
JMB10	623mm	71mm	600mm	Ø25mm
JMB19	823mm	71mm	800mm	Ø25mm

KNURLED PULL HANDLE



- Back to back - Max door thickness: 60mm
- Diamond knurled handle grip
- Stainless steel
- Grade 4 corrosion
- Part of the Nero range
- M8 thread
- Suitable for glass doors

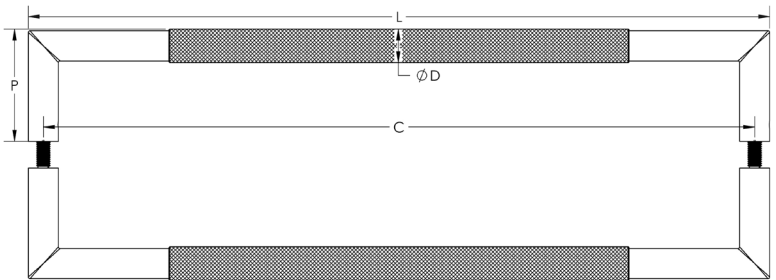


Product Code	Length (L)	Projection (P)	Centres (C)	Diameter (D)
JMB9	443mm	67mm	425mm	Ø20mm

KNURLED PULL HANDLE



- Back to back - Max door thickness: 65mm
- Diamond knurled handle grip
- Stainless steel
- Grade 5 corrosion
- PVD finish
- Part of the Three One Six range
- M8 thread
- Suitable for glass doors
- Available in two sizes, see below chart for details

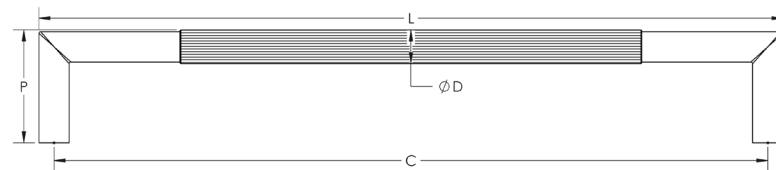
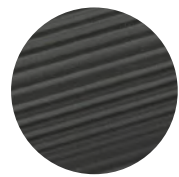


Product Code	Length (L)	Projection (P)	Centres (C)	Diameter (D)
JMB11	623mm	71mm	600mm	Ø25mm
JMB20	823mm	71mm	800mm	Ø25mm



LINEAR PULL HANDLE

- Bolt through - Max door thickness: 60mm
- Linear handle grip
- Stainless steel
- Grade 5 corrosion
- PVD finish
- Part of the Three One Six range
- M8 thread
- Compatible with JMB25 concealed rose
- Available in two sizes, see below chart for details

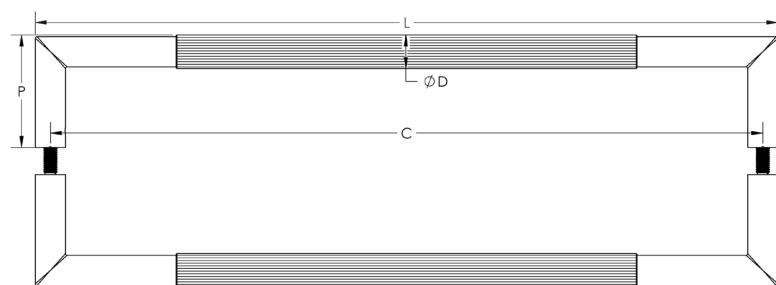


Product Code	Length (L)	Projection (P)	Centres (C)	Diameter (D)
JMB14	623mm	71mm	600mm	Ø25mm
JMB21	823mm	71mm	800mm	Ø25mm



LINEAR PULL HANDLE

- Back to back - Max door thickness: 65mm
- Linear handle grip
- Stainless steel
- Grade 5 corrosion
- PVD finish
- Part of the Three One Six range
- M8 thread
- Suitable for glass doors
- Available in two sizes, see below chart for details

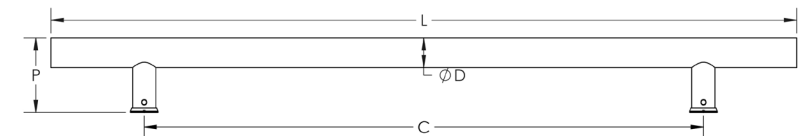


Product Code	Length (L)	Projection (P)	Centres (C)	Diameter (D)
JMB15	623mm	71mm	600mm	Ø25mm
JMB22	823mm	71mm	800mm	Ø25mm



GUARDSMAN PULL HANDLE

- Bolt through - Max door thickness: 65mm
- Stainless steel
- Grade 5 corrosion
- PVD finish
- Part of the Three One Six range
- M8 thread
- Optional roses included
- Compatible with JMB25 concealed rose
- Available in three sizes, see below chart for details

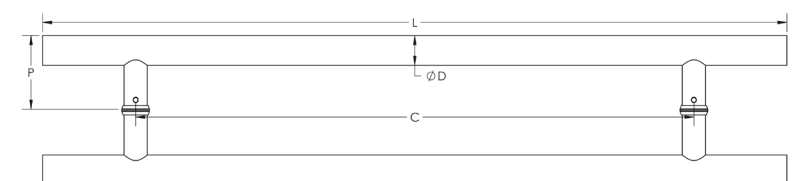


Product Code	Length (L)	Projection (P)	Centres (C)	Diameter (D)
JMB520B	800mm	80mm	600mm	Ø32mm
JMB520C	1200mm	80mm	1000mm	Ø32mm
JMB520D	1800mm	80mm	1600mm	Ø32mm



GUARDSMAN PULL HANDLE

- Back to back - Max door thickness: 65mm
- Stainless steel
- Grade 5 corrosion
- PVD finish
- Part of the Three One Six range
- M8 thread
- Suitable for glass doors
- Available in three sizes, see below chart for details

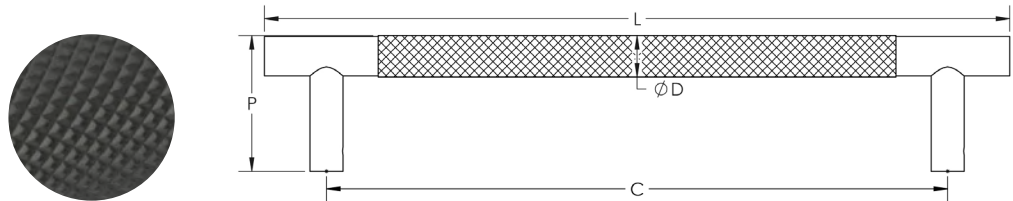


Product Code	Length (L)	Projection (P)	Centres (C)	Diameter (D)
JMB521B	800mm	80mm	600mm	Ø32mm
JMB521C	1200mm	80mm	1000mm	Ø32mm
JMB521D	1800mm	80mm	1600mm	Ø32mm

BARI GUARDSMAN PULL HANDLE



- Bolt through - Max door thickness: 54mm
- Aluminium
- Grade 4 corrosion
- Part of the Jedo range
- M8 thread
- Compatible with JMB25 concealed rose

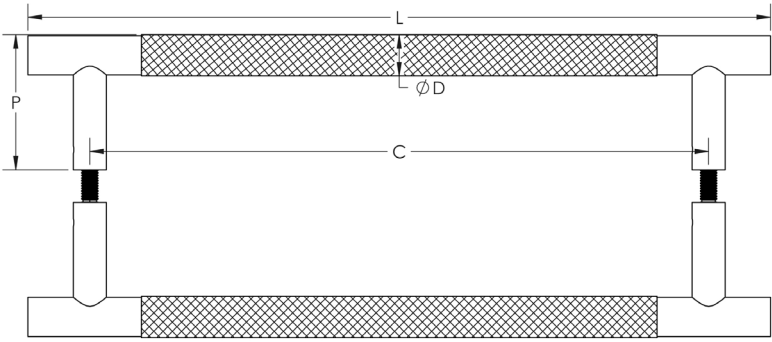


Product Code	Length (L)	Projection (P)	Centres (C)	Diameter (D)
JV1800MB	360mm	66mm	300mm	Ø20mm

BARI GUARDSMAN PULL HANDLE



- Back to back - Max door thickness: 60mm
- Aluminium
- Part of the Jedo range
- M8 thread
- Suitable for glass doors



Product Code	Length (L)	Projection (P)	Centres (C)	Diameter (D)
JV1800MBB2B	360mm	66mm	300mm	Ø20mm

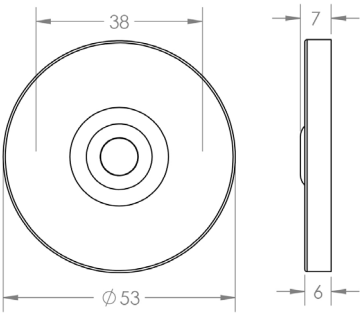
PULL HANDLE ROSE

Product Code: JMB25



- Stainless steel
- Part of the Jedo range
- M8 thread

Grade 304



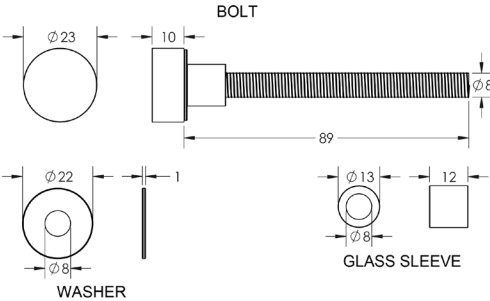
DECORATIVE BOLT

Product Code: M8MB



- Stainless steel cap
- M8 thread
- Comes with glass sleeve and washer
- For use with bolt through handles
- Sold in pairs

Grade 304

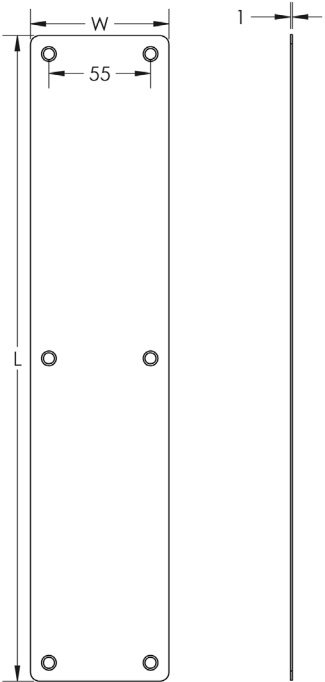


PUSH PLATE



- Stainless steel
- Radiused corners
- Part of the Nero range
- Available in two sizes, see below chart for details

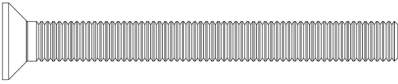
Grade 304



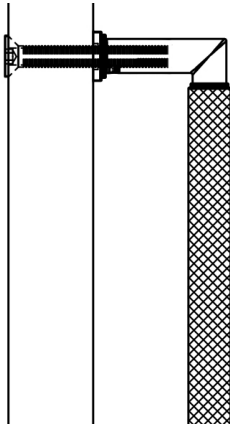
Product Code	Length (L)	Width (W)
JMB81	350mm	75mm
JMB82	475mm	75mm

FIXING TYPES

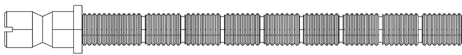
Bolt through fixing bolt



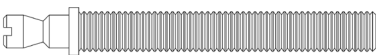
The bolt through fixing is usually paired with a push plate. This is because the screw head from the bolt is still visible on the opposite side of the door. A push plate can be easily attached to hide this, and it's functional.



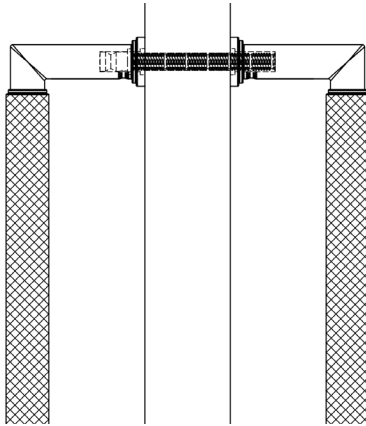
Back to back brass fixing bolt



Back to back stainless steel fixing bolt



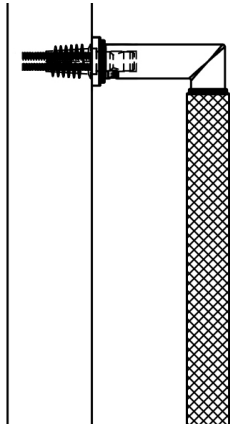
The back to back fixing allows a pull handle to be attached to both sides of a door. The bolt is attached to the pull handle with a grub screw fixing hidden neatly in the pillars of the handle. The bolts can be cut to size.



Face fix fixing bolt and self tapping socket



The face fix bolt can only be applied to solid core doors. A self tapping socket is inserted into the door and a bolt is screwed into the socket. Then the pull handle is placed over the bolt and secured with a grub screw hidden neatly in the pillars of the handle.



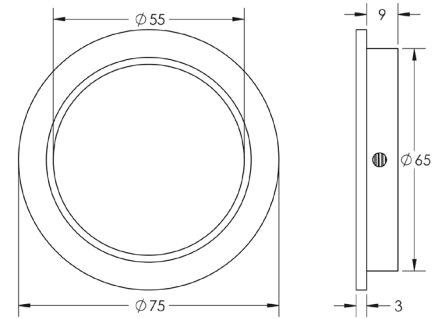
FLUSH PULLS
— & —
EDGE PULLS

ROUND CONCEALED FLUSH PULL

Product Code: **BUR215MB**



- Solid brass
- Part of the Burlington range

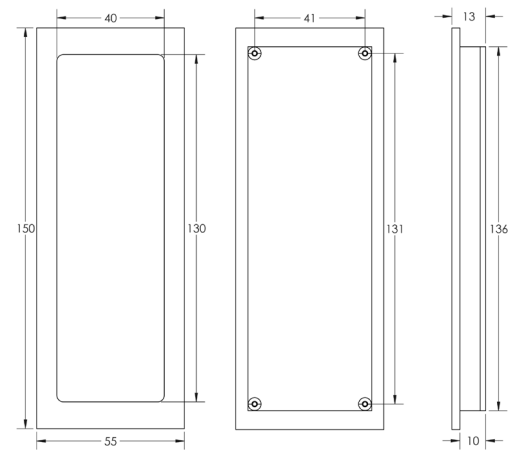


RECTANGULAR CONCEALED FLUSH PULL

Product Code: **BUR225MB**



- Solid brass
- Part of the Burlington range

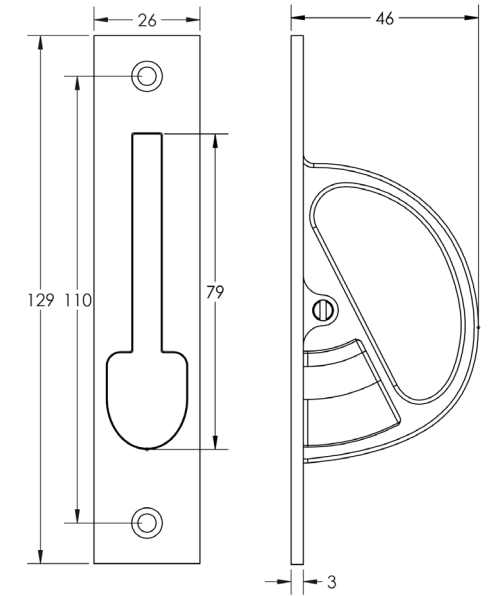



EDGE PULL

Product Code: **BUR280MB**




- Solid brass
- Part of the Burlington range

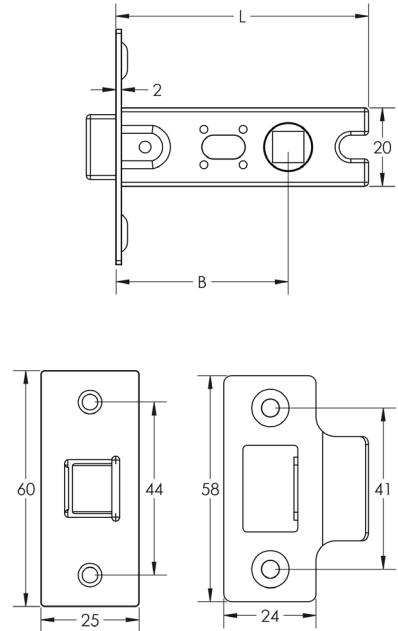





TUBULAR LATCH




- Sprung
- Successfully passed 1634-1 without any bedding material
- Part of the Jedo range
- Available in two sizes, see below chart for details



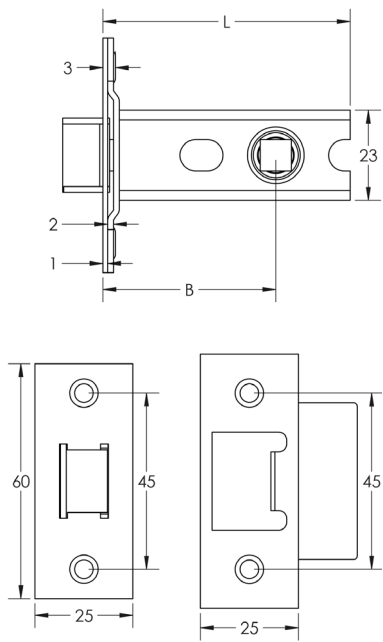
Product Code	Length (L)	Backset (B)
JL149MB	64mm	44mm
JL159MB	76mm	57mm



HEAVY DUTY TUBULAR LATCH



- Heavy sprung
- Grade 3 corrosion
- Fire tested when fitted with intumescent pads
- Flexifire kit FD30: GRA16
- Flexifire kit FD60: GRA16.2
- Part of the Jedo range
- Available in three sizes, see below chart for details

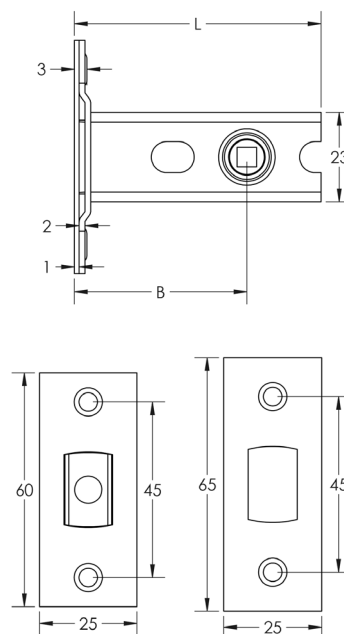


Product Code	Length (L)	Backset (B)
JL-HDT64BL	64mm	44mm
JL-HDT76BL	76mm	57mm
JL-HDT102BL	102mm	82mm

TUBULAR DEADBOLT

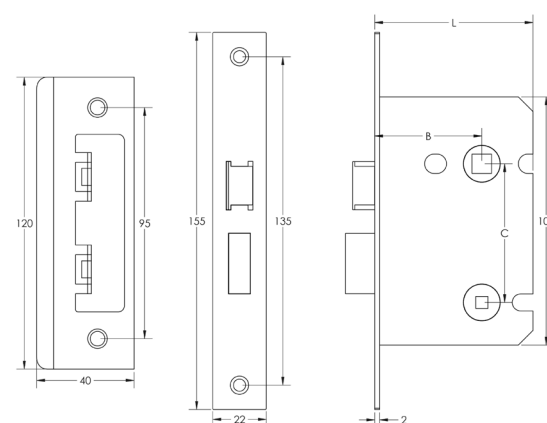


- Heavy sprung
- Grade 3 corrosion
- Fire tested when fitted with intumescent pads
Flexifire kit FD30: GRA18
Flexifire kit FD60: GRA18.2
- Part of the Jedo range
- Available in three sizes, see below chart for details



Product Code	Length (L)	Backset (B)
JL-HDB64BL	64mm	44mm
JL-HDB76BL	76mm	57mm
JL-HDB102BL	102mm	82mm

BATHROOM LOCK

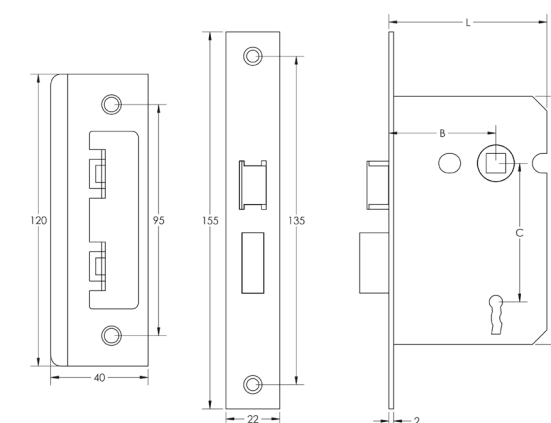


- Fire tested when using intumescent kit
Flexifire kit FD30: GRA12
- Part of the Jedo range
- Available in two sizes, see below chart for details



Product Code	Length (L)	Backset (B)	Centres (C)
JL450BL	64mm	44mm	57mm
JL460BL	76mm	57mm	57mm

2 LEVER SASHLOCK

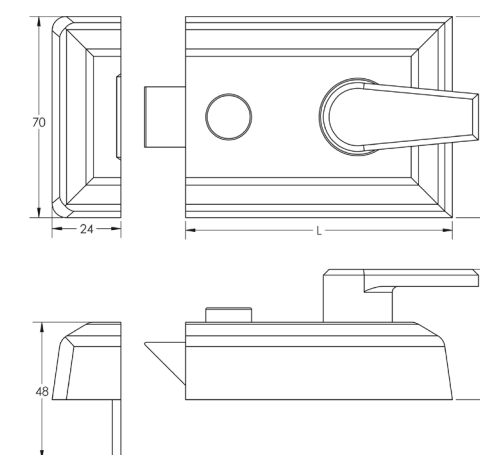


- Fire tested when using intumescent kit
Flexifire kit FD30: GRA12
- Part of the Jedo range
- Available in two sizes, see below chart for details



Product Code	Length (L)	Backset (B)	Centres (C)
JL470BL	64mm	44mm	57mm
JL480BL	76mm	57mm	57mm

NIGHT LATCH



- Brass
- Part of the Jedo range
- Available in two sizes, see below chart for details



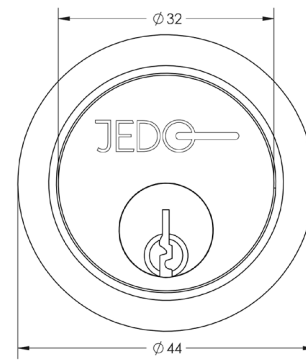
Product Code	Length (L)	Width (W)	Projection (P)
JL5021BL	90mm	70mm	50mm
JL5031BL	66mm	70mm	50mm

RIM CYLINDER REPLACEMENT

Product Code: **JL-5PRCBL**

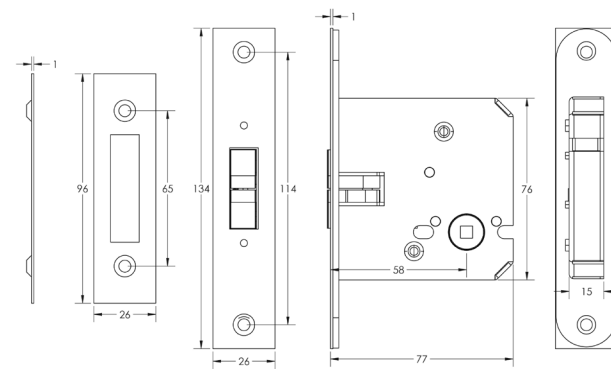


- Supplied with 3 keys
- Part of the Jedo range



SLIDING DOOR LOCK

Product Code: **JL840MB**



- Sprung
- Part of the Jedo range

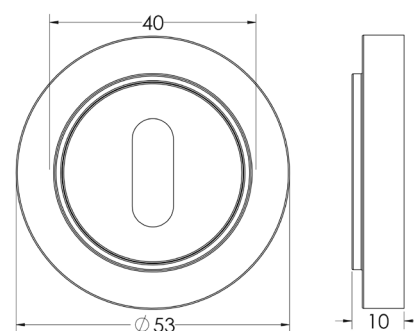
ESCUTCHEONS

ROUND STANDARD ESCUTCHEON

Product Code: **BUR-60MB-71MB**

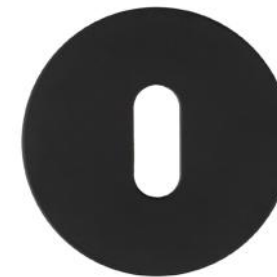


- Solid brass
- Part of the Burlington range

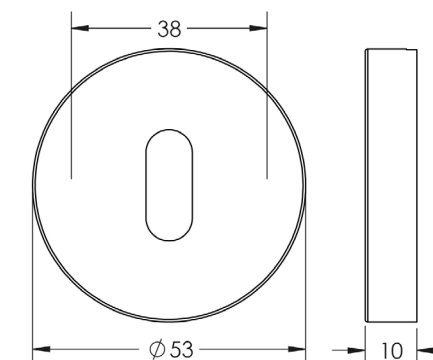


ROUND STANDARD ESCUTCHEON

Product Code: **JMB16**



- Stainless steel
- Grade 4 corrosion
- Part of the Nero range

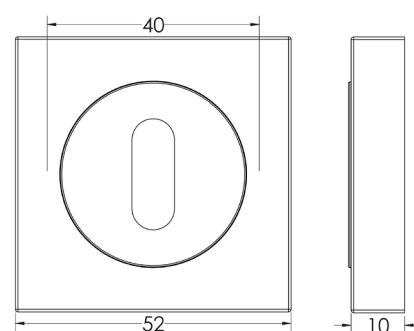


SQUARE STANDARD ESCUTCHEON

Product Code: **BUR-60MB-171MB**



- Solid brass
- Part of the Burlington range

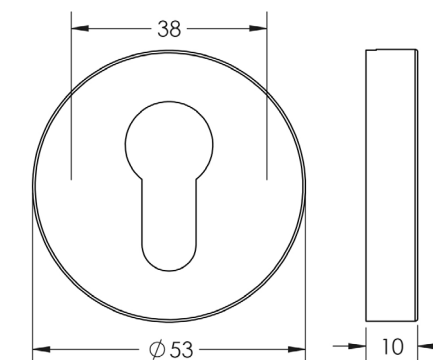


ROUND EURO ESCUTCHEON

Product Code: **JMB18**



- Stainless steel
- Grade 4 corrosion
- Part of the Nero range

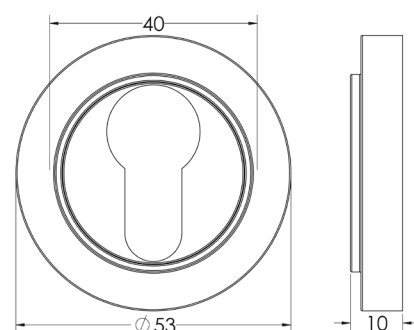


ROUND EURO ESCUTCHEON

Product Code: **BUR-61MB-71MB**



- Solid brass
- Part of the Burlington range

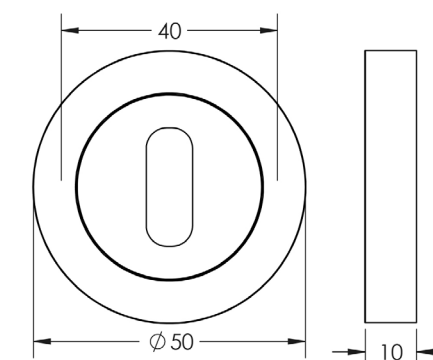


ROUND STANDARD ESCUTCHEON

Product Code: **JMB503**



- Zinc
- Part of the Nero range

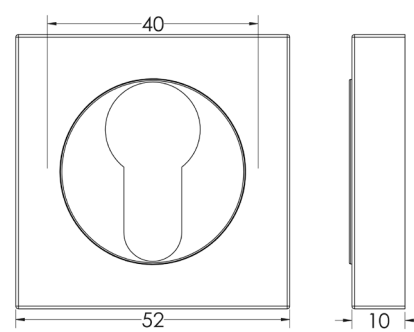


SQUARE EURO ESCUTCHEON

Product Code: **BUR-61MB-171MB**



- Solid brass
- Part of the Burlington range

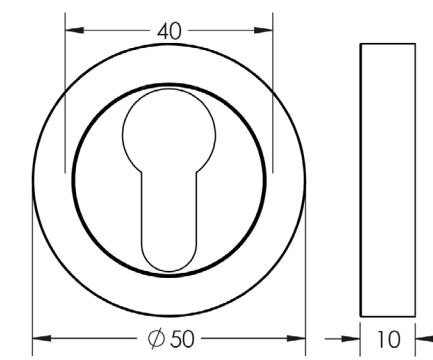


ROUND EURO ESCUTCHEON

Product Code: **JMB503E**



- Zinc
- Part of the Nero range

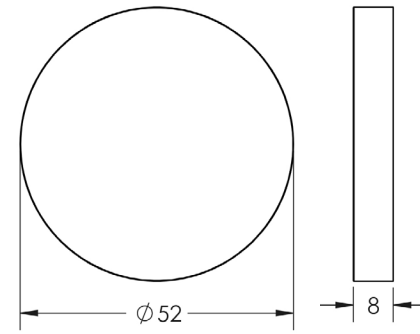


ROUND BLANK ESCUTCHEON

Product Code: **JMB14B**



- Stainless steel
- Part of the Jedo range



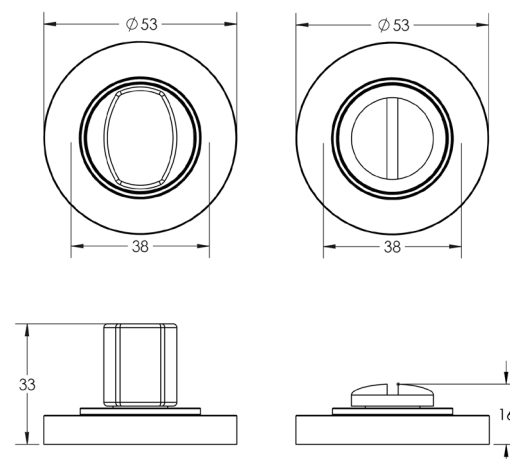
TURN
— & —
RELEASES

ROUND TURN & RELEASE

Product Code: **BUR-81MB-50MB**



- Solid brass
- Part of the Burlington range

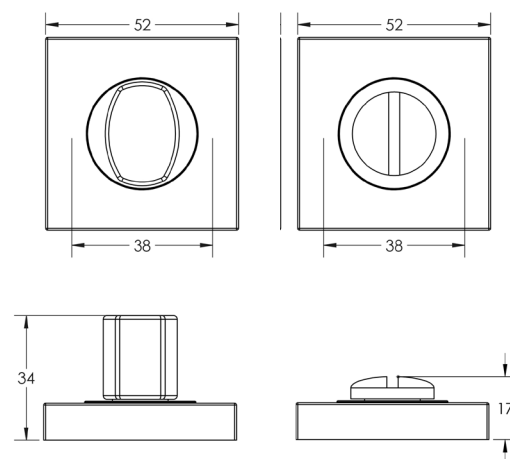


SQUARE TURN & RELEASE

Product Code: **BUR-81MB-150MB**

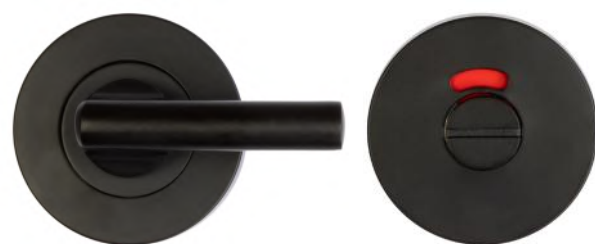


- Solid brass
- Part of the Burlington range

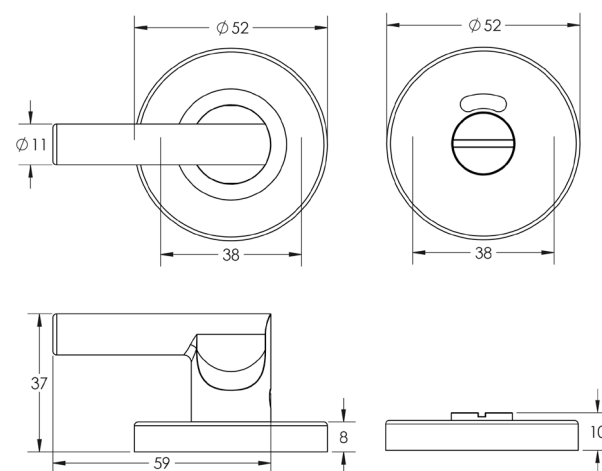


EASY TURN & RELEASE

Product Code: **JMB355**



- Stainless steel
- Part of the Nero range

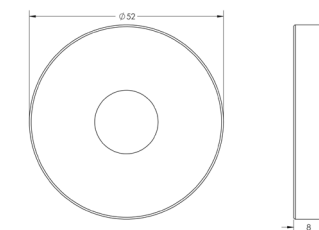


EASY TURN & RELEASE INDICATOR COVER

Product Code: **JMB61B**



- Stainless steel
- Part of the Nero range
- Compatible with JMB355 release

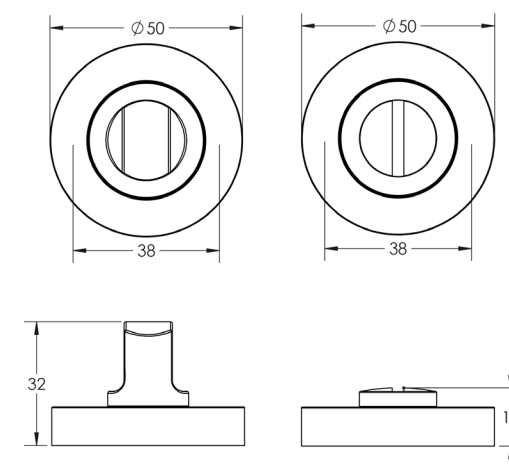


ROUND TURN & RELEASE

Product Code: **JMB2666**



- Stainless steel
- Part of the Nero range

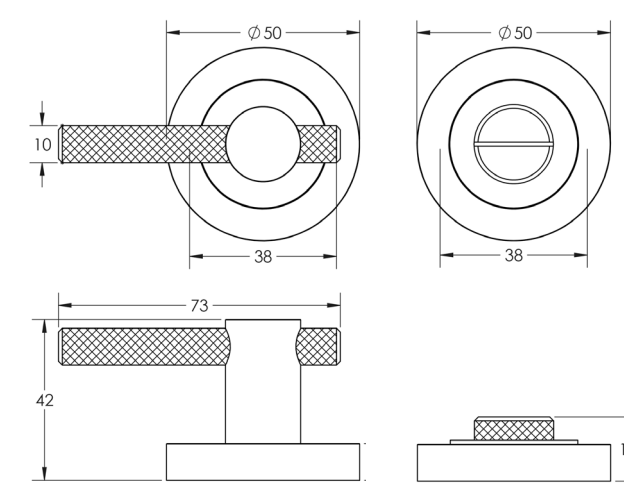


BARI EASY TURN & RELEASE

Product Code: **JV855MB**



- Aluminium
- Part of the Jedo range





- Solid brass
- Part of the Burlington range



- Solid brass
- Part of the Burlington range

CABINET FURNITURE




PICCADILLY CABINET KNOB

- Solid brass
- Diamond knurled grip
- Part of the Burlington range
- Matching cabinet handle available
- M4 fixing
- Max door thickness: 30mm

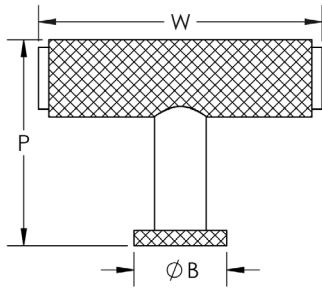


Product Code	Projection (P)	Diameter (D)	Base (B)
BUR400MB	35mm	Ø30mm	Ø23mm




PICCADILLY T-BAR KNOB

- Solid brass
- Diamond knurled grip
- Part of the Burlington range
- Rose fitting optional
- Matching cabinet handle available
- M4 fixing
- Max door thickness: 30mm

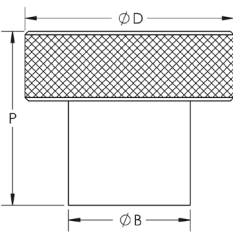


Product Code	Projection (P)	Width (W)	Base (B)
BUR401MB	40mm	55mm	Ø18mm



WENLOCK CABINET KNOB

- Solid brass
- Diamond knurled grip
- Part of the Hoxton range
- Available in two sizes, see below chart for details
- Matching cabinet handle available
- M4 fixing
- Max door thickness: 30mm



Product Code	Projection (P)	Diameter (D)	Base (B)
HOX130MB	25mm	Ø30mm	Ø18mm
HOX140MB	25mm	Ø40mm	Ø28mm



THAXTED CABINET KNOB

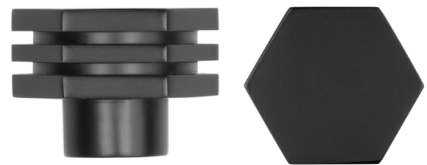
- Solid brass
- Linear grip
- Part of the Hoxton range
- Available in two sizes, see below chart for details
- Matching cabinet handle available
- M4 fixing
- Max door thickness: 30mm



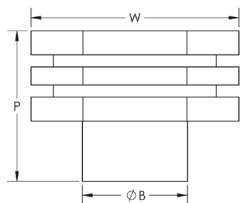
Product Code	Projection (P)	Diameter (D)	Base (B)
HOX230MB	25mm	Ø30mm	Ø18mm
HOX240MB	25mm	Ø40mm	Ø28mm



NILE CABINET KNOB



- Solid brass
- Hexagonal grip
- Part of the Hoxton range
- Available in two sizes, see below chart for details
- Matching cabinet handle available
- M4 fixing
- Max door thickness: 30mm

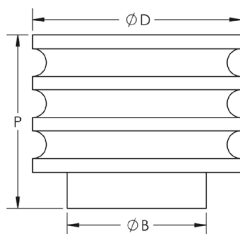


Product Code	Projection (P)	Diameter (D)	Base (B)
HOX330MB	25mm	Ø30mm	Ø18mm
HOX340MB	25mm	Ø40mm	Ø28mm

STURT CABINET KNOB



- Solid brass
- Grooved grip
- Part of the Hoxton range
- Available in two sizes, see below chart for details
- Matching cabinet handle available
- M4 fixing
- Max door thickness: 30mm

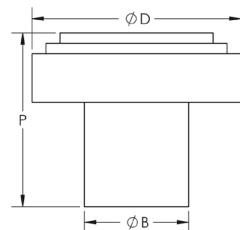


Product Code	Projection (P)	Diameter (D)	Base (B)
HOX430MB	25mm	Ø30mm	Ø20mm
HOX440MB	25mm	Ø40mm	Ø20mm

CROPLEY CABINET KNOB



- Solid brass
- Stepped detail
- Part of the Hoxton range
- Available in two sizes, see below chart for details
- Matching cabinet handle available
- M4 fixing
- Max door thickness: 30mm

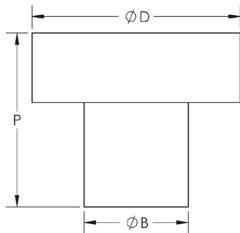


Product Code	Projection (P)	Diameter (D)	Base (B)
HOX1030MB	25mm	Ø30mm	Ø15mm
HOX1040MB	25mm	Ø40mm	Ø20mm

MURRAY CABINET KNOB



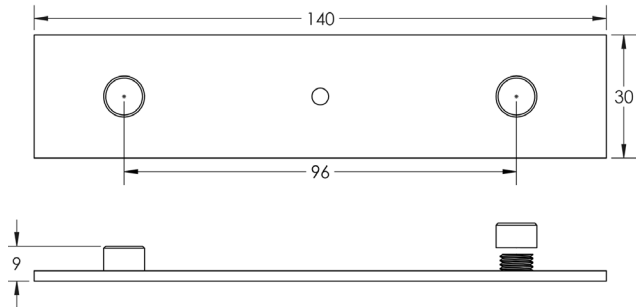
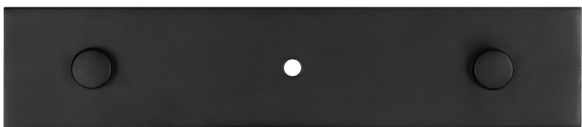
- Solid brass
- Linear
- Part of the Hoxton range
- Available in two sizes, see below chart for details
- Matching cabinet handle available
- M4 fixing
- Max door thickness: 30mm



Product Code	Projection (P)	Diameter (D)	Base (B)
HOX1130MB	25mm	Ø30mm	Ø15mm
HOX1140MB	25mm	Ø40mm	Ø20mm

FANSHAW BACKPLATE FOR CUPBOARD KNOBS

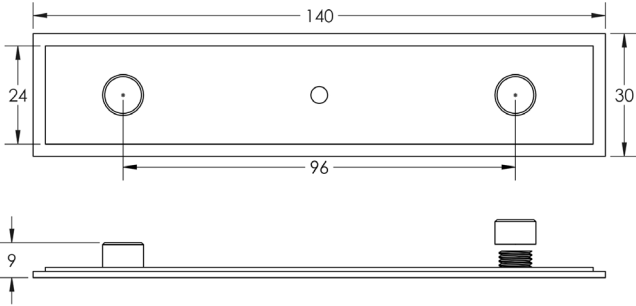
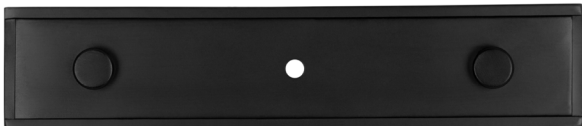
Product Code: **HOX5090MB**



- Solid brass
- Part of the Hoxton range
- Concealed screw fixing

RUSHTON BACKPLATE FOR CUPBOARD KNOBS

Product Code: **HOX6090MB**



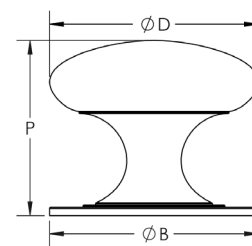
- Solid brass
- Part of the Hoxton range
- Concealed screw fixing



MUSHROOM CABINET KNOB



- Zinc
- Part of the Jedo range
- Available in five sizes, see below chart for details
- M4 fixing
- Max door thickness: 40mm



Product Code	Projection (P)	Diameter (D)	Base (B)
JMB47A	23mm	Ø25mm	Ø24mm
JMB47B	28mm	Ø32mm	Ø31mm
JMB47C	31mm	Ø38mm	Ø37mm
JMB47D	35mm	Ø42mm	Ø40mm
JMB47E	40mm	Ø50mm	Ø44mm

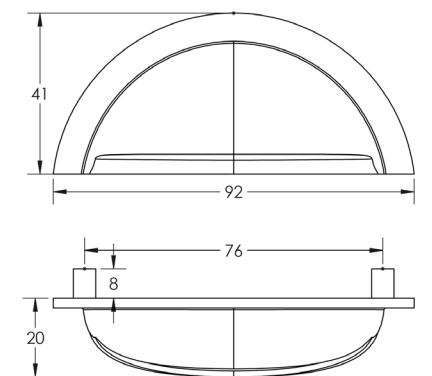


CUP PULL

Product Code: **JMB427**



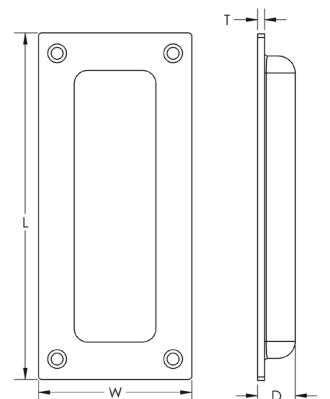
- Zinc
- Part of the Jedo range



FLUSH PULL

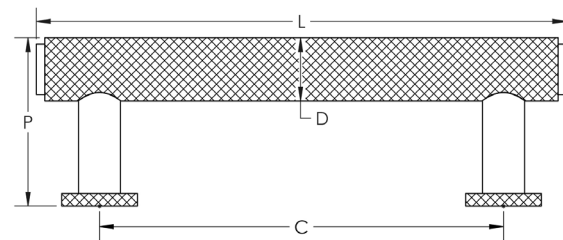


- Solid brass
- Part of the Jedo range
- Available in three sizes, see below chart for details



Product Code	Length (L)	Width (W)	Thickness (T)	Depth (D)
JV428BL	75mm	40mm	2mm	11mm
JV428ABL	89mm	42mm	2mm	11mm
JV428BBL	102mm	45mm	2mm	11mm

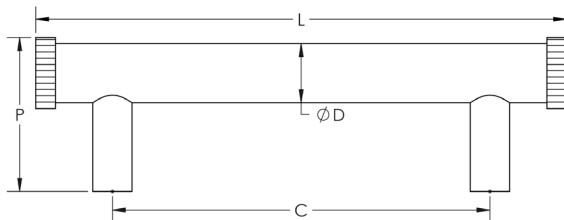
PICCADILLY CABINET HANDLE



- Solid brass
- Part of the Burlington range
- Available in three sizes, see below chart for details
- Matching T-bar and cupboard knob available
- Rose fittings optional
- M4 fixing
- Max door thickness: 30mm

Product Code	Length (L)	Projection (P)	Centres (C)	Diameter (D)
BUR410	126mm	40mm	96mm	Ø15mm
BUR411	160mm	40mm	128mm	Ø15mm
BUR412	254mm	40mm	224mm	Ø15mm

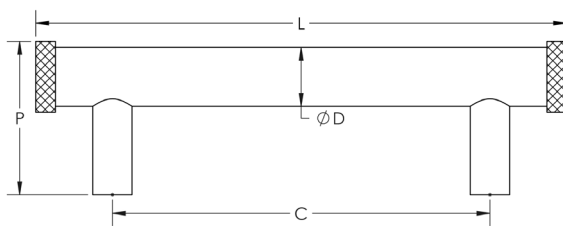
THAXTED CABINET HANDLE



- Solid brass
- Part of the Hoxton range
- Available in two sizes, see chart below for details
- Two backplate options available
- Matching cupboard knob available
- M4 fixing
- Max door thickness: 30mm

Product Code	Length (L)	Projection (P)	Centres (C)	Diameter (D)
HOX250MB	135mm	39mm	96mm	Ø15mm
HOX260MB	263mm	39mm	224mm	Ø15mm

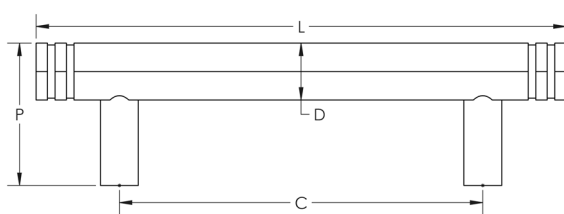
WENLOCK CABINET HANDLE



- Solid brass
- Part of the Hoxton range
- Available in two sizes, see chart below for details
- Two backplate options available
- Matching cupboard knob available
- M4 fixing
- Max door thickness: 30mm

Product Code	Length (L)	Projection (P)	Centres (C)	Diameter (D)
HOX150MB	135mm	39mm	96mm	Ø15mm
HOX160MB	263mm	39mm	224mm	Ø15mm

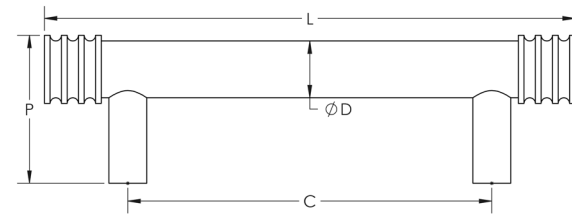
NILE CABINET HANDLE



- Solid brass
- Part of the Hoxton range
- Available in two sizes, see chart below for details
- Two backplate options available
- Matching cupboard knob available
- M4 fixing
- Max door thickness: 30mm

Product Code	Length (L)	Projection (P)	Centres (C)	Diameter (D)
HOX350MB	140mm	38mm	96mm	Ø17mm
HOX360MB	268mm	38mm	224mm	Ø17mm

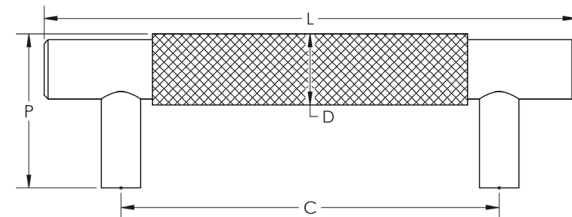
STURT CABINET HANDLE



- Solid brass
- Part of the Hoxton range
- Available in two sizes, see chart below for details
- Two backplate options available
- Matching cupboard knob available
- M4 fixing
- Max door thickness: 30mm

Product Code	Length (L)	Projection (P)	Centres (C)	Diameter (D)
HOX450MB	140mm	39mm	96mm	Ø15mm
HOX460MB	268mm	39mm	224mm	Ø15mm

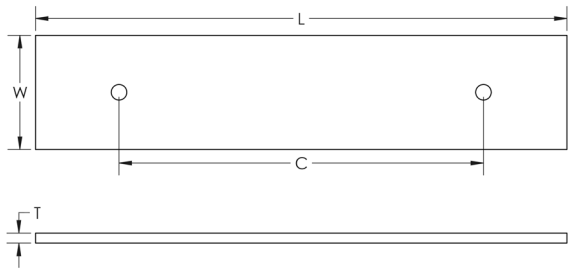
TAPLOW CABINET HANDLE



- Solid brass
- Part of the Hoxton range
- Available in two sizes, see chart below for details
- Two backplate options available
- Matching cupboard knob available
- M4 fixing
- Max door thickness: 30mm

Product Code	Length (L)	Projection (P)	Centres (C)	Diameter (D)
HOX2050MB	135mm	39mm	96mm	Ø18mm
HOX2060MB	263mm	39mm	224mm	Ø18mm

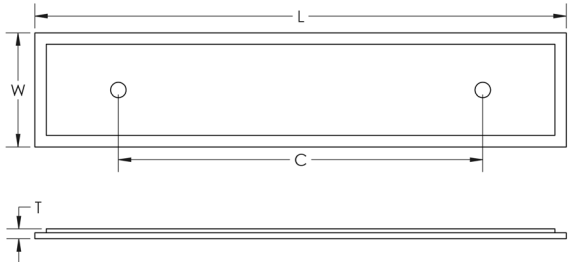
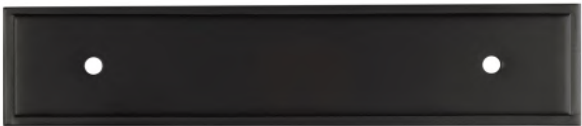
FANSHAW BACKPLATE
FOR CABINET HANDLES



- Solid brass
- Part of the Hoxton range
- Available in two sizes, see chart below for details
- Matching cupboard knob plates available

Product Code	Length (L)	Width (W)	Centres (C)	Thickness (T)
HOX5050MB	140mm	30mm	96mm	2.5mm
HOX5060MB	268mm	30mm	224mm	2.5mm

RUSHTON BACKPLATE
FOR CABINET HANDLES




- Solid brass
- Part of the Hoxton range
- Available in two sizes, see chart below for details
- Matching cupboard knob plates available

Product Code	Length (L)	Width (W)	Centres (C)	Thickness (T)
HOX6050MB	140mm	30mm	96mm	2.5mm
HOX6060MB	268mm	30mm	224mm	2.5mm



ACCESSORIES

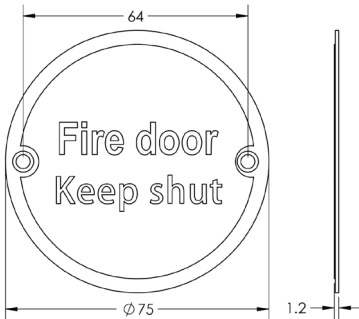
Product Code: JS100MB




FIRE DOOR KEEP SHUT SIGN

- Stainless steel

- Part of the Jedo range



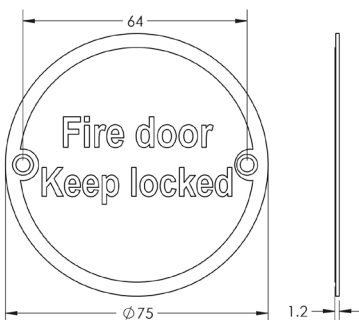
Product Code: JS101MB




FIRE DOOR KEEP LOCKED SIGN

- Stainless steel

- Part of the Jedo range



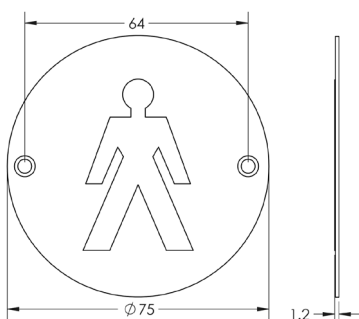
Product Code: JS102MB




MALE SIGN

- Stainless steel

- Part of the Jedo range



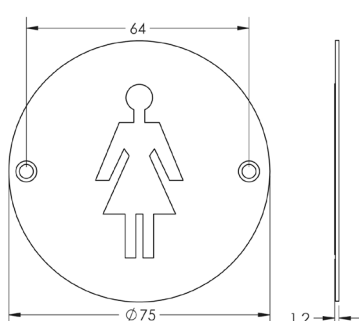
Product Code: JS103MB




FEMALE SIGN

- Stainless steel

- Part of the Jedo range



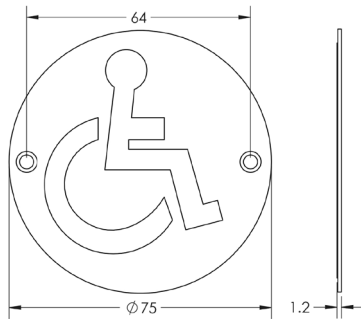
Product Code: JS104MB




WHEELCHAIR ACCESSIBLE SIGN

- Stainless steel

- Part of the Jedo range



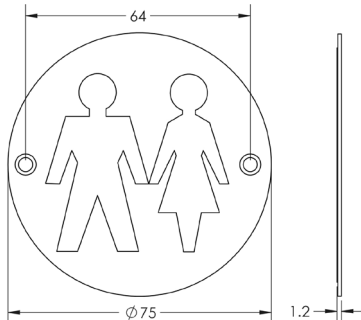
Product Code: JS105MB



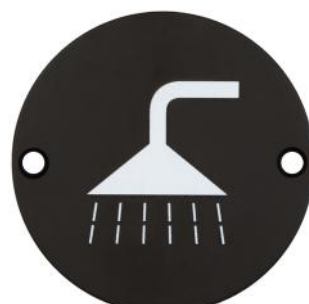
UNISEX SIGN

- Stainless steel

- Part of the Jedo range



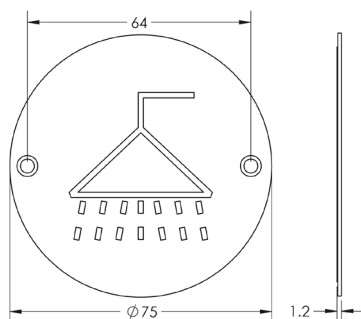
Product Code: JS106MB




SHOWER SIGN

- Stainless steel

- Part of the Jedo range



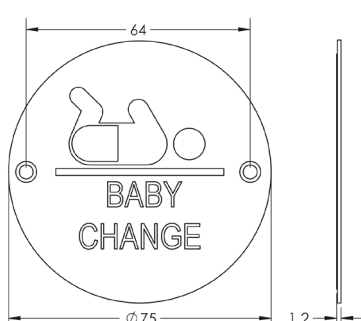
Product Code: JS107MB




BABY CHANGE SIGN

- Stainless steel

- Part of the Jedo range

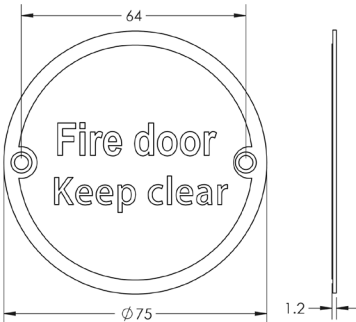


Product Code: JS108MB




FIRE DOOR KEEP CLEAR SIGN

- Stainless steel
- Part of the Jedo range

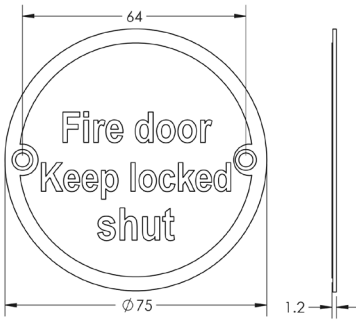


Product Code: JS109MB




FIRE DOOR KEEP LOCKED SHUT SIGN

- Stainless steel
- Part of the Jedo range

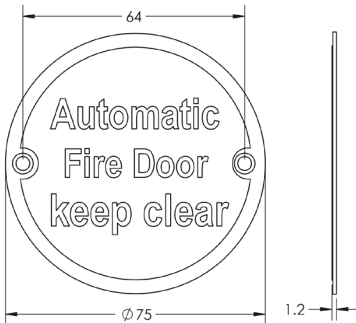


Product Code: JS110MB




AUTOMATIC FIRE DOOR KEEP CLEAR SIGN

- Stainless steel
- Part of the Jedo range

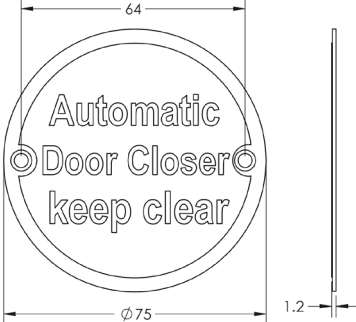


Product Code: JS111MB



AUTOMATIC DOOR CLOSER KEEP CLEAR SIGN

- Stainless steel
- Part of the Jedo range



Product Code: JMB3580




EXTERIOR CENTRE DOOR KNOB

- Stainless steel
- PVD finish
- Part of the Three One Six range
- M8 fixing
- Max door thickness: 65mm

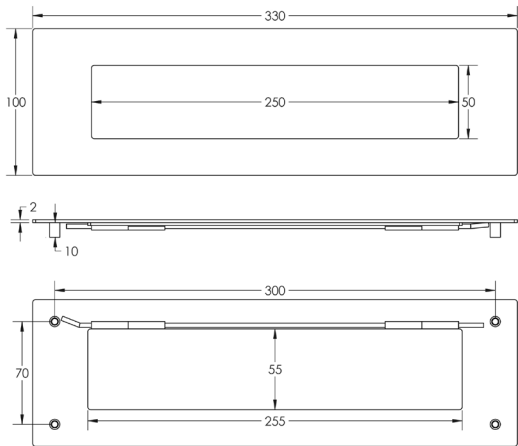


Product Code: JMB3009




LETTER PLATE

- Stainless steel
- PVD finish
- Part of the Three One Six range

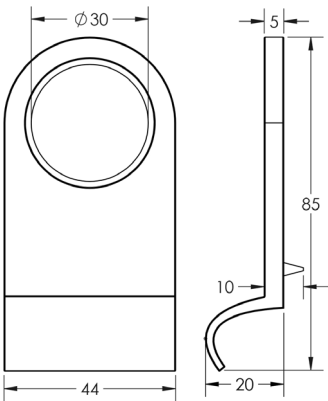


Product Code: JV40BL

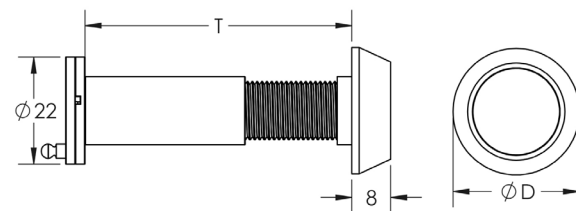


CYLINDER PULL

- Solid brass
- Part of the Jedo range



DOOR VIEWER

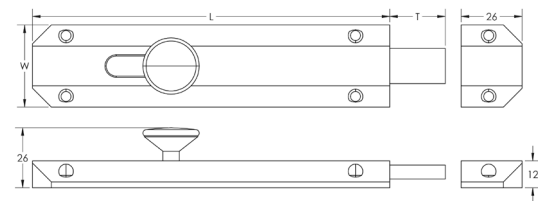


- Brass
- 180 degrees field of view
- Supplied with INT2 intumescent pads
- Part of the Jedo range
- Available in two sizes, see below chart for details



Code	Door Thickness (T)	Diameter (D)
JV944BL	35-55mm	26mm
JV945BL	50-70mm	26mm

SLIDE BOLTS



- Solid brass
- Part of the Jedo range
- Available in three sizes, see below chart for details

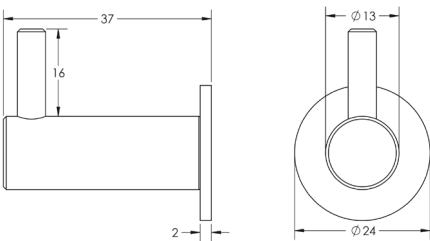
Code	Length (L)	Width (W)	Throw (T)
JV167MB	102mm	35mm	24mm
JV168MB	152mm	35mm	24mm
JV169MB	203mm	35mm	24mm

VESTRY COAT HOOK

Product Code: HOX665MB



- Solid brass
- Part of the Hoxton range

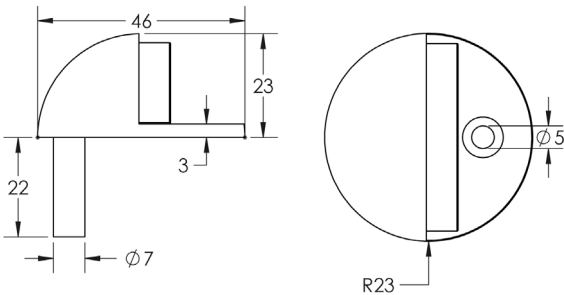


OVAL FLOOR DOOR STOP

Product Code: JMB86



- Zinc
- Part of the Nero range

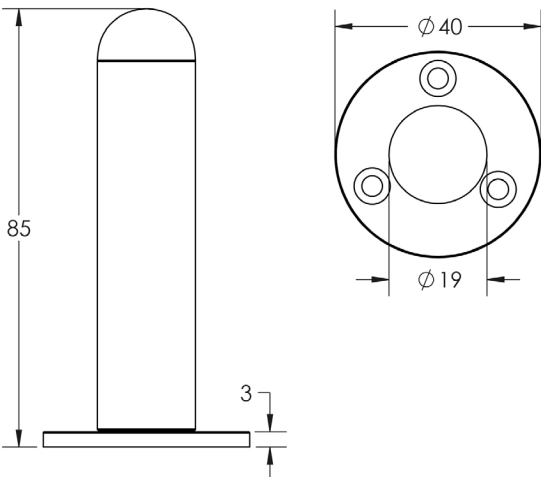


WALL MOUNTED DOOR STOP

Product Code: JMB9551B



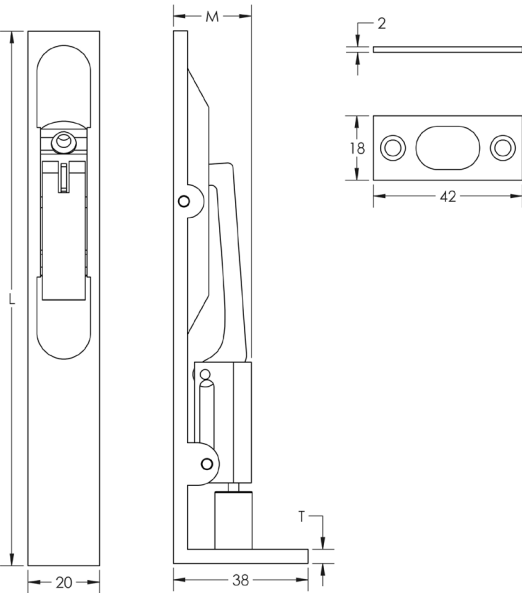
- Steel
- Part of the Nero range



FLUSH BOLT



- Stainless steel
- Fire tested when fitted with intumescent pads
- Flexifire kit FD30: GRA7
- Flexifire kit FD60: GRA7.2
- Part of the Nero range
- Adjustable throw 17-20mm
- Available in two sizes, see chart below for details



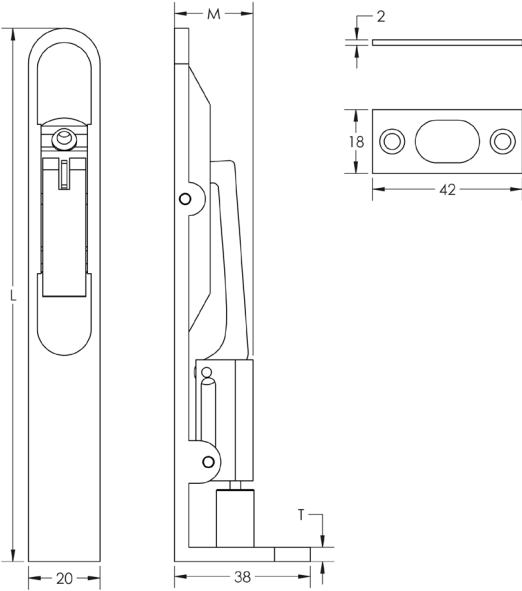
Product Code	Length (L)	Mortice Depth (M)	Thickness (T)
JMB50	154mm	22mm	4mm
JMB51	203mm	22mm	4mm

HINGES

RADIUS FLUSH BOLT



- Stainless steel
- Fire tested when fitted with intumescent pads
- Flexifire kit FD30: GRA7
- Flexifire kit FD60: GRA7.2
- Part of the Nero range
- Adjustable throw 17-20mm

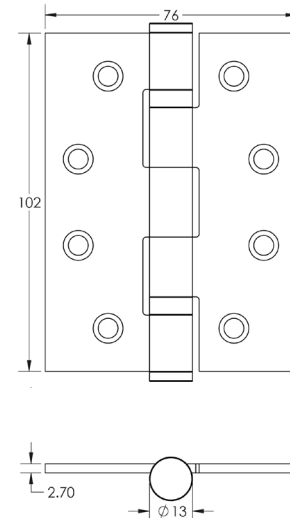


Product Code	Length (L)	Mortice Depth (M)	Thickness (T)
JMB51R	203mm	22mm	4mm

Product Code: **J8500BL**
102 x 76mm



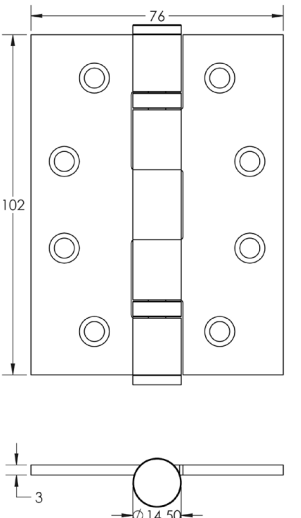
- BALL BEARING HINGE**
- Steel
 - Grade 4 corrosion
 - Fire tested when fitted with intumescent pads
Flexifire kit FD30 PK4: GRA1
Flexifire kit FD30 PK6: GRA2
Flexifire kit FD60 PK4: GRA1.2
Flexifire kit FD60 PK6: GRA2.2
 - Suitable for 80kg doors when using 3 hinges
 - Tested to 200,000 cycles
 - Part of the Jedo range
 - Sold as a pair with screws included



Product Code: **J9500MB**
102 x 76mm



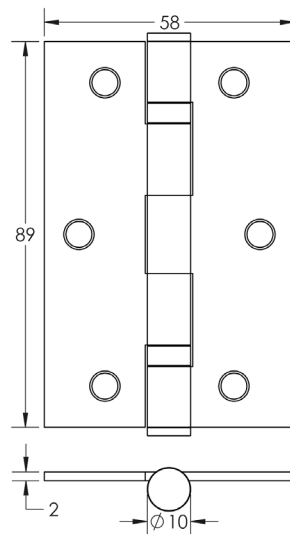
- BALL BEARING HINGE**
- Stainless steel
 - Grade 4 corrosion
 - Fire tested when fitted with intumescent pads
Flexifire kit FD30 PK4: GRA1
Flexifire kit FD30 PK6: GRA2
Flexifire kit FD60 PK4: GRA1.2
Flexifire kit FD60 PK6: GRA2.2
 - Suitable for 120kg doors when using 3 hinges
 - Tested to 200,000 cycles
 - Part of the Jedo range
 - Sold as a pair with screws included



Product Code: **J8501BL**
89 x 58mm



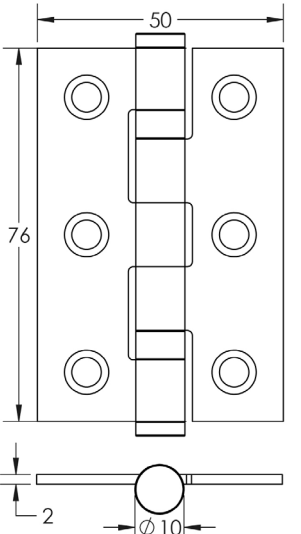
- BALL BEARING HINGE**
- Mild steel
 - Grade 4 corrosion
 - Fire tested when fitted with intumescent pads
 - Suitable for 40kg doors when using 3 hinges
 - Tested to 200,000 cycles
 - Part of the Jedo range
 - Sold as a pair with screws included



Product Code: **J9502MB**
76 x 50mm



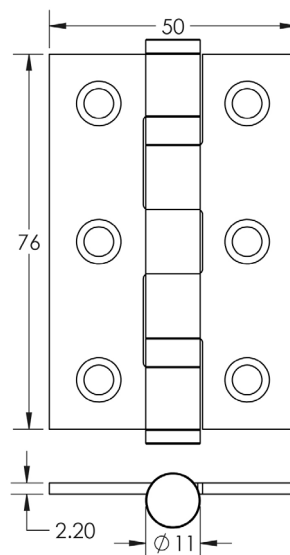
- BALL BEARING HINGE**
- Stainless steel
 - Grade 4 corrosion
 - Fire tested when fitted with intumescent pads
 - Suitable for 40kg doors when using 3 hinges
 - Tested to 200,000 cycles
 - Part of the Jedo range
 - Sold as a pair with screws included



Product Code: **J8502BL**
76 x 50mm



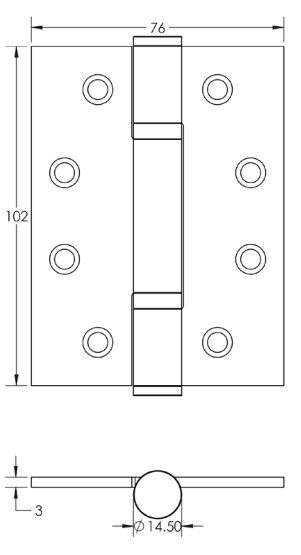
- BALL BEARING HINGE**
- Steel
 - Grade 4 corrosion
 - Fire tested when fitted with intumescent pads
 - Suitable for 40kg doors when using 3 hinges
 - Tested to 200,000 cycles
 - Part of the Jedo range
 - Sold as a pair with screws included



Product Code: **J9603BL**
102 x 76mm



- POLYMER BEARING HINGE**
- Stainless steel
 - Grade 4 corrosion
 - Fire tested when fitted with intumescent pads
Flexifire kit FD30 PK4: GRA1
Flexifire kit FD30 PK6: GRA2
Flexifire kit FD60 PK4: GRA1.2
Flexifire kit FD60 PK6: GRA2.2
 - Suitable for 120kg doors when using 3 hinges
 - Tested to 200,000 cycles
 - Part of the Jedo range
 - Sold as a pair with screws included

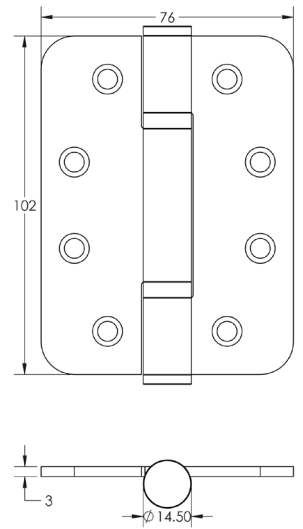


Product Code: **J9633BL**
102 x 76mm



RADIUS POLYMER BEARING HINGE

- Stainless steel
- Grade 4 corrosion
- Fire tested when fitted with intumescent pads
Flexifire kit FD30 PK4: GRA4
Flexifire kit FD60 PK6: GRA4.2
- Suitable for 120kg doors when using 3 hinges
- Tested to 200,000 cycles
- Part of the Jedo range
- Sold as a pack of 3 with screws included



Product Code: **HOX800MB**
50 x 35mm



FINIAL HINGE

- Solid brass
- Part of the Hoxton range
- Sold as a pair with screws included

