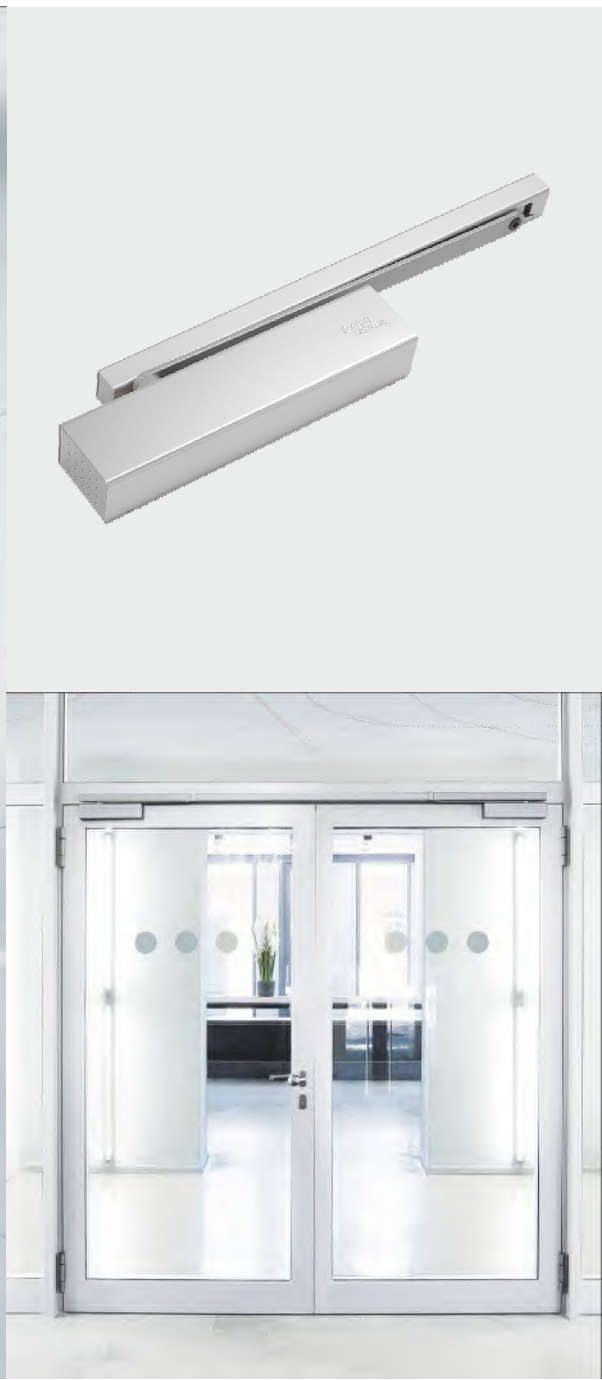


# Access Hardware Solutions



Product Catalogue





# Contents

4	Our market-specific solutions
6	Future with a history
8	Project planning and support
10	Access Hardware Solutions
18	Door closers at a glance
20	Slide channel door closer system and hold-open systems
28	Free-swing door closers
30	Door closer with standard arm
34	Concealed door closers
36	Floor springs
38	System components and accessories
40	Door locks
47	Emergency-escape locks with automatic locking mechanism at a glance, for single-leaf doors
52	Door locks
53	Emergency-escape locks with automatic locking mechanism at a glance, for double-leaf doors
60	Panic hardware
68	Mechanical key systems at a glance
70	Access management
72	Mechanical key cylinders
76	Locking cylinders straight from your specialist partner
78	Serrated key systems
79	Reversible key systems
80	Refined surface finishes
81	Modular design. Maximum flexibility.
82	Added value for your locking system
88	Lever handle
90	Pull handles
92	Concealed hinges
93	Stainless steel hinges
94	Seals
96	EntriWorX EcoSystem
100	Services
120	Sustainability



# Advanced solutions are our passion

With over 160 years of experience with access and security in a variety of markets, we continue to innovate and deliver the best products, solutions and services to our customers around the world.

In our increasingly digitized and populated world, security is no longer a mechanical process but an integral part of the urban infrastructure. Anything from crowd management to digital protection and, more recently, hygiene and disaster preparedness can be security considerations.

With the right technologies and partners, cutting-edge access management tools can support our societies' transition into a smart and sustainable future, maximizing our security whether we need protection in crowds or clouds.



## Our offering

Our offering includes individual products, complete solutions, and range of services, from planning and installation to ongoing operations, all designed to help increase our customers' excellence.



### Access Automation Solutions (AAS)

Entrance Automation  
Entrance Security



### Access Control Solutions (ACS)

Escape and Rescue  
Lodging Systems  
Electronic Access & Data



### Access Hardware Solutions (AHS)

Door Closers  
Architectural Hardware  
Mechanical Key Systems



### Services

Consulting and Planning  
Implementation  
Commissioning  
Maintenance

## Our focus sectors

We offer a bespoke range of products and solutions to many different types of buildings with many different access needs. We are there, from seamless passenger journeys at airports, through customized solutions at hospitals, to providing a safe and welcoming experience in stadiums.



Airports



Retail



Transport &  
Logistics



Healthcare



Banks & Finance



Industry &  
Manufacturing



Offices



Government &  
Administration



Utilities &  
Telecoms



Hospitality



Residential &  
Multi-family  
housing



Education



Sports & Culture

# Future with a history

## Providing you with the best has always been our policy

**KABA**

**DORMA**

1862

Locksmith's workshop and cash register factory founded by Franz Bauer



1908

Dörken & Mankel KG founded

1934

Patenting of the reversible key

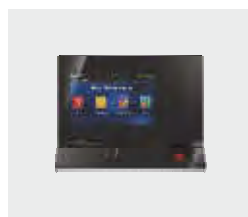


1950

Entry into the door closer business

2000/01

Acquisition of the Unican company



1962

Production of the first automatic doors

2009

Installation of the world's first electric airport gate for automated self-boarding



2002

Entry into the mobile partition wall system business

2015

Merger of Dorma and Kaba

2015/16

First cloud-based access solutions

Acquisitions in North America

2017

Acquisition of the Best company in the USA

2019/20

EcoVadis gold medal for sustainability management

Development of digital business ecosystems

2021/22

EntriWorX EcoSystem launch

Recognised as one of the most sustainable companies in Switzerland

dormakaba





A man and a woman are sitting at a table, smiling and looking at each other. The man is on the left, wearing a blue shirt, and the woman is on the right, wearing a white top. They appear to be in a professional setting, possibly a meeting or a collaborative work environment. The background is blurred, showing vertical lines that could be window frames or office partitions.

# How do you always keep track of the most important things?

Project planning and support



## Through consultation focused totally on you

You need to secure your building. With robust technology adapted to your respective needs in every detail. With comfortably adaptable systems facilitating workflow and increasing efficiency and economic feasibility. With precise and dependable solutions tailored to your needs, which you can comfortably and reliably integrate into your plans or expansion.

We provide all this from a single source. Our comprehensive consultation services enable the custom-tailored implementation of your project. Our experienced experts create a precise requirement profile based on your tasks, needs and wishes and then recommend targeted solution concepts.

We support you in cross-system planning and implementation with our fast, full-coverage and knowledgeable sales network. With dormakaba, you always have a direct contact partner with specific expertise for your entire system and its individual components – we're internally networked and work across multiple interfaces.

We advise and accompany you from planning to implementation – personally, cooperatively and openly. We offer you access systems which prove their worth every day in use across the globe and specialised service that's always at your side.

**Customer Care :**  
**1-800-121-6414**  
**[service.india@dormakaba.com](mailto:service.india@dormakaba.com)**

# Design factor



## Design with three letters: XEA

What we mean by XEA: The XEA design language is based on a comprehensive, standardised position, consistently taking into account our own requirement for compatibility, high quality, innovation, perfection and aesthetics as stipulated in ten points. This principle unites basic forms, colours and surface finishes in a single, uniform appearance. XEA combines dormakaba's product and corporate worlds to form a universal design that speaks a recognisable language in terms of content and visual presence.







## #1

**Recognisable details**

The dormakaba design is recognisable in every product, naturally from its distinctive logo, but above all in the interplay of XEA elements.



## #2

**Intuitive symbols**

All symbols used are reduced to their essential elements, but are easily recognisable and self-explanatory.



## #3

**Standardised surface finishes**

The four basic colours for every product ensure that all combinations will always match. The XEA colour-coding system adds clarity.



## #4

**Clean forms**

The even and two-dimensional surface finishes create a holistic form design. Radii and sharp edges contrast with and complement each other.



## #5

**User-friendly operation**

User interfaces have a minimalist, uniform design, making them immediately recognisable. Operation is self-explanatory.



## #6

**Contrasting surface finishes**

The combination of light and dark, matt and glossy surface finishes creates a multi-faceted overall image. This makes individual function areas clearly recognisable.



## #7

**Strong casing**

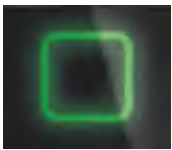
If products are equipped with an enveloping housing frame, it provides additional protection from external influences.



## #8

**Multi-layered compositions**

The construction reveals its value at first glance. The quality of the material of the decorative screens impresses with a visible, solid edge.



## #9

**LED indicator**

All applications can be learned quickly across-the-board, for example when LED light strips signal access, guide people or indicate status.



## #10

**Customised design**

A system of materials and colours creates a broad spectrum of solutions suited to any architecture and more: individual touches are created with XEA.



# Access Hardware Solutions

## **Door solutions from a single source**

Whether for barrier-free door situations with high ease of opening, individual fire protection or unparalleled systems for escape and rescue routes– dormakaba has the solution. Our custom-built product lines offer intelligent solutions for almost every situation.



# Access Hardware Solutions.

## Secure, reliable and long-lasting.

Easier opening and smoother closing represent an added value for every user of doors that is literally "obvious" right away. This ease of use is made possible by innovative dormakaba technology, which is used in all products in our comprehensive portfolio. Our large portfolio of access hardware solutions includes various door closer systems, a wide range of different lock cylinder designs for doors, window handles, gates, garages, mailboxes, furniture, circuits and almost every other conceivable application, as well as self-locking panic locks and panic hardware.



## Door Closers



### Slide channel door closer

With Easy Open technology, as a free swing door closer or concealed door closer.



### Door closer with standard arm

Compact door closer for a wide range of door requirements.



### Floor spring

Versatile floor springs for all types of doors.

## Architectural Hardware



### Door locks

Emergency-escape locks with automatic locking mechanism, mechanical or motorised, network-capable – security in both directions.



### Panic hardware

Reliable and aesthetic, security latch bolts or exit pads, standard-compliant for public facilities.

## Mechanical Key Systems



### Locking systems and their planning

Easy and flexible management of your locking system.



### Reversible key systems

Locking cylinder with reversible key. We've combined security and convenience for you.



**Special functions for your reversible key system – added value on request**



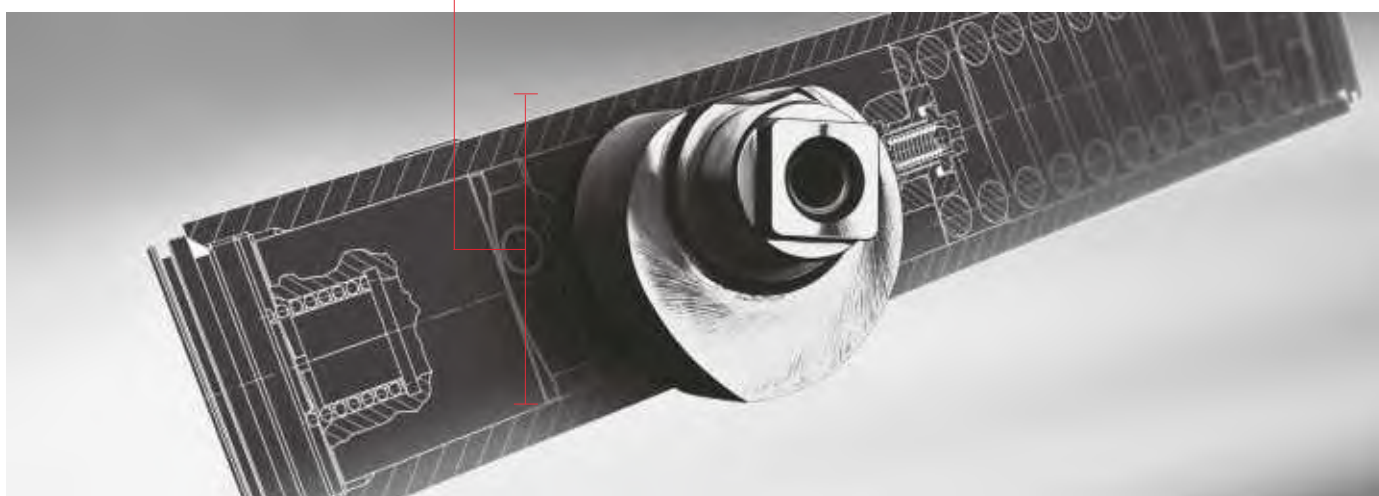
### Serrated key systems

Secure and flexible – our locking cylinders with serrated keys.



**Special functions for your serrated key system – added value on request**

# Easy door opening as per DIN SPEC 1104



40% less effort, 40% easier opening – the heart-shaped cam reduces the required effort to a minimum:

EASY-OPEN technology, which has been tried and tested millions of times, enables a rapidly decreasing opening torque in accordance with

DIN SPEC 1104. This makes our slide channel door closers barrier-free in accordance with DIN 18040, easy to open and even able to close slowly if needed. This is convenience which makes everyday life much easier for young and old alike.





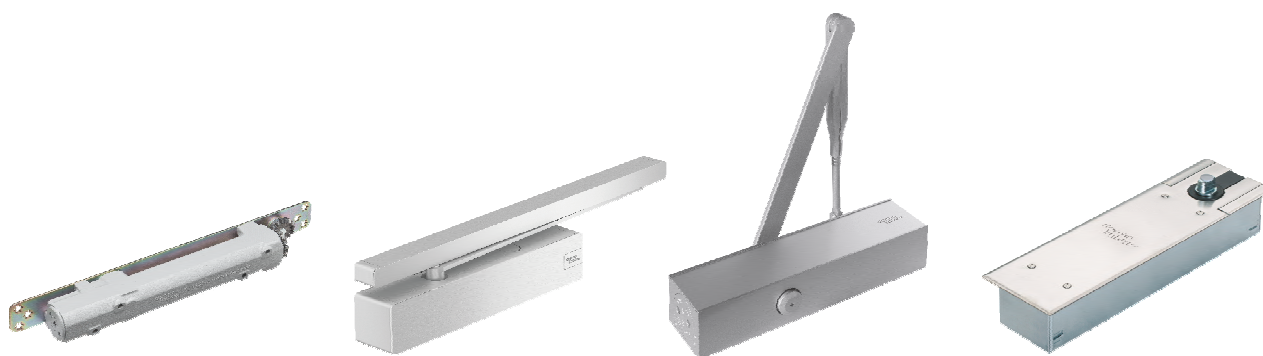


# Door closers

## at a glance

Slide channel door closer										
Product	ITS 96	ITS 96 FL	ITS 915	TS 98 XEA	TS 97	TS 97 FL XEA	TS 93	TS 99 FL	TS 92	TS 91
<b>General doors (width)</b>										
≤ 950 mm										●
≤ 1,100 mm	●		●		●				●	
≤ 1,250 mm							●	●		
≤ 1,400 mm	●	●		●		●				
≤ 1,600 mm							●			
Double action doors										
Exterior doors, opening outwards				●			●			
<b>Fire and smoke doors</b>										
Fail-safe from 0°		●				●		●		
1-leaf	●	●	●	●	●	●	●	●	●	●
1-leaf with electromagn. Hold open	○	○		○		○	○	○		
2-leaf	●	●*		●		●*	●	●*		
2-leaf with electromagn. Hold open	○	○*		○		○*	○	○*		
<b>Functions</b>										
Closing force (EN)	2-4/ 3-6	3-6	4	1-6	2-4	3-6	2-5/ 5-7	2-5	1-4	3
Continuously adjustable closing force	●	●		●	●	●	●	●	●	
Continuously adjustable closing time	●	●	●	●	●	●	●	●	●	●
Soft Flow				●						
2. closing path between 15° and 0°				●					●	●
Continuously adjustable latching action	●	●	●	●	●	●	●	●		
Delayed closing				●			●			
DIN SPEC 1104 (Easy Open)	●	●	●	●	●	●	●	●	●	●
Barrier-free design in accordance with DIN 18040**	●	●	●	●	●	●	●	●	●	●
Same design for DIN-L (left-handed door) and DIN-R (right-handed door)	●	●	●	●	●	●	●	●	●	●
Hold-open system <sup>2</sup>	○		○	○	○		○	○	○	○
Complete package with slide channel					●	●		●		
Back check				●			●			
Mounting plate with universal hole pattern				●	●	●	●	●	●	○
Mechanical cushioned limit stay	●	●	●	○	●	○	○	○	○	○

● Standard    ○ Optional    \*Fail-safe at active door leaf    \*\*Up to EN 5    \*\*\*Electrohydraulic hold-open  
 1 Fail-safe via arm as from a 75° door opening angle    2 Not for fire/smoke protection

[illegible]

# Slide channel door closer system

## TS 98 XEA system



The new TS 98 XEA system impresses with a new design and new functions. It offers high opening convenience for almost all single-leaf and double-leaf doors. The enhanced closing force according to EN 1-6 enables a greater range of applications. Nearly silent closing is made possible by the additional SoftFlow closing path. The system also impresses during installation, as just one closer body is required for all installation types.

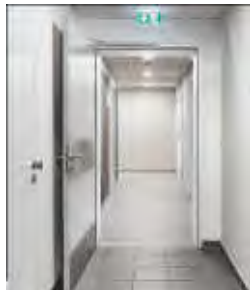
### Simply impressive:

- High opening convenience, fully controlled and low-noise closing
- One closer body for all four installation types, DIN-L/DIN-R
- Three different closing paths: 180°–15°; 15°–0°; 7°–0°
- Make all adjustments conveniently from the front
- For door leaf widths of up to 1,400 mm
- Standard backcheck and delayed closing in all installation types
- XEA design
- Additional SoftFlow closing path for nearly silent closing (15°–0°)



### TS 98 XEA N/ TS 98 XEA EMF

- Single-leaf doors
- Electromechanical hold-open unit



### TS 98 XEA EMR/ TS 98 XEA UBIVIS

- Single-leaf doors
- Electromechanical hold-open with incorporated smoke detector with integrated power pack



### TS 98 XEA GSR/ TS 98 XEA GSR-EMF

- Single-leaf doors with door coordinator
- Electromechanical hold-open unit



### TS 98 XEA GSR-EMR/ TS 98 XEA GSR-EMR without EMF

- Double-leaf doors with door coordinator
- Electromechanical hold-open with incorporated smoke detector with integrated power pack





# Battery-operated slide channel hold-open system

## G-Ubivis XEA



The battery-operated slide channel hold-open system with integrated smoke detector for use on fire doors. G-Ubivis XEA is approved as a hold-open system by the German Institute for Civil Engineering (Deutsches Institut für Bautechnik, DIBt) in Berlin. Combined with approved dormakaba door closers, G-Ubivis XEA also features perfect design.

### Simply impressive:

- Greater flexibility when upgrading hold-open systems
- No wiring for 230 V
- No dependence on other work being completed first
- As per DIN 18040 and DIN SPEC 1104/CEN/TR 15894
- Easy upgrading and installation without altering the building structure
- Attractive XEA design



# Slide channel door closer system

## TS 93

The modular slide channel door closer system in a wide range of variants for barrier-free construction.

### Simply impressive:

- Barrier-free as per DIN 18040
- With tried-and-tested EASY OPEN technology
- For door leaf widths up to 1,600 mm, single-leaf and double-leaf doors
- High opening convenience
- Suitable/approved for emergency exits and fire doors
- Door coordinator with incorporated smoke detector with integrated power pack



#### TS 93 N/TS 93 EMF

- Single-leaf doors
- Electromechanical hold-open



#### TS 93 EMR

- Single-leaf doors
- Electromechanical hold-open with incorporated smoke detector with integrated power pack



#### TS 93 GSR/GSR-EMF

- Double-leaf doors with door coordinator
- Electromechanical hold-open unit



#### TS 93 GSR-EMR/ GSR-EMR/V

- Double-leaf doors with door coordinator
- Electromechanical hold-open with incorporated smoke detector with integrated power pack





# Slide channel door closer system

## TS 92/TS 91

The universal slide channel door closer for standard doors.

**Simply impressive:**

- With tried-and-tested EASY OPEN technology
- For door widths up to 1,100 mm (TS 92, EN 1–4) or 950 mm (TS 91, EN 3)
- For single-leaf and double-leaf doors
- High opening convenience
- For emergency exits and fire doors



## TS 97

The smallest surface-mounted door closer with slide channel in the building business.

**Simply impressive:**

- Compact, with an installation depth of just 37 mm
- Uniform length of door closer and slide channel
- For door widths up to 1,100 mm (EN 2–4)
- With tried-and-tested EASY OPEN technology
- High opening convenience
- High quality for upscale interior construction
- Quick, easy installation



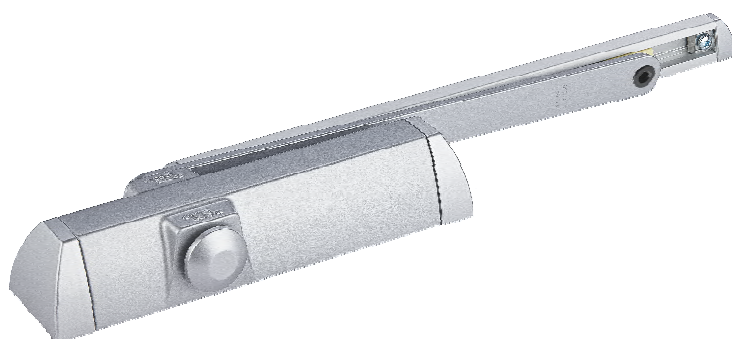


## TS 90 Impulse

The basic slide channel door closer which combines technical quality, economic feasibility and contemporary design.

**Simply impressive:**

- With tried-and-tested EASY OPEN technology
- One closer body for all four installation types, DIN-L/DIN-R
- For door widths up to 1,100 mm
- High opening convenience
- Suitable for interior doors
- Economical



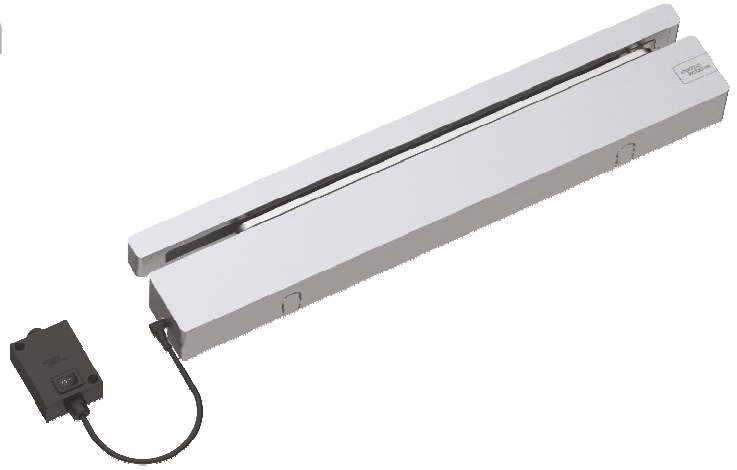
# Free-swing door closer

## TS 97 FL XEA system

**For freely movable fire and smoke doors and secure closure in the event of a fire.**

The TS 97 FL XEA is the new hold-open mechanism with fail-safe from dormakaba used in conjunction with a smoke alarm system (e.g. RMZ) as a hold-open system. The TS 97 FLR-K XEA is used as a complete solution including a smoke alarm system.

In both systems, the fail-safe is activated from a door opening angle of  $> 0^\circ$ , which means the door can move freely. In the event of an alarm or power failure, the door closer will securely close the door.



### Simply impressive:

- Adjustable closing force EN 3–6
- Barrier-free thanks to the tried-and-tested EASY OPEN technology – as per DIN 18040 and DIN SPEC 1104 (CEN/TR 15894)
- Intuitive use of the door – fail-safe is put into force on the first door operation irrespective of the door opening angle
- For fire and smoke doors up to 1,400 mm wide and weighing up to 180 kg
- Closing time continuously adjustable using valve
- Can be used for DIN-L and DIN-R
- Adjustable latching action for reliable door closing
- Uniform appearance in the dormakaba XEA design



### TS 97 FL XEA

- Single-leaf doors
- Fail-safe



### TS 97 FLR-K XEA

- Single-leaf doors with fail-safe
- Incorporated smoke detector with integrated power pack



### TS 97 FL GSR XEA

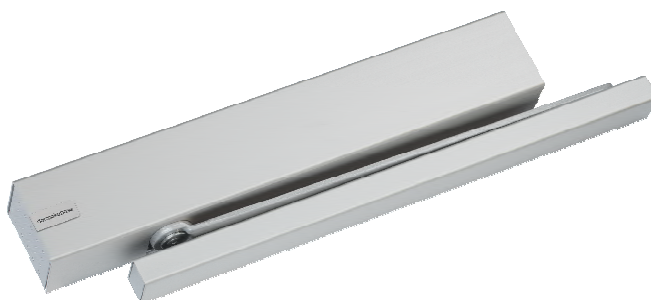
- Double-leaf doors with door coordinator

# TS 99 FL

## High freedom of movement for even more door widths.

The free-swing door closer enables nearly resistance-free opening of fire doors. Thanks to the fail-safe, the door is freely movable and is especially suitable for barrier-free construction as per DIN 18040 or DIN SPEC 1104, but in case of alarm only in connection with an RMZ.

Door closer TS 99 FL with the Contur design is a hold-open mechanism with fail-safe used as a hold-open system in connection with a smoke alarm system (dormakaba RMZ). In the event of an alarm or power failure, the door closer will securely close the door.



## Simply impressive:

- High opening convenience
- For door leaf widths up to 1,250 mm, single-leaf and double-leaf doors
- Fail-safe for door angle >0°
- Adjustable closing force EN 2–5



### TS 99 FL

- Single-leaf doors
- Fail-safe



### TS 99 FLR

- Single-leaf doors with fail-safe
- Incorporated smoke detector with integrated power pack



### TS 99 FLR-K

- Single-leaf doors with fail-safe
- Incorporated smoke detector with integrated power pack



### TS 99 FL GSR/ FL GSR-EMF 1/ FL GSR-EMR 1

- Double-leaf doors with door coordinator
- Incorporated smoke detector with integrated power pack



# Door closer with standard arm

## TS 83

Convenience door closer with standard arm and self-regulating backcheck.

**Simply impressive:**

- For nearly every door size and application (EN 3–6 and 7)
- Also available with optimised corrosion protection for exterior doors
- Compact closer design and solid flat arm
- Broad functional scope – standard and optional
- Door leaf widths up to 1,400mm
- Can be used on fire and smoke doors



## TS 89F

The Easy-action Door Closer TS 89 F has been specially designed as a universally applicable closer for fire and smoke rated doors. Its particularly sleek and compact body means that there are virtually no fixing problems, and it offers all the dependability of quality assured

**Simply impressive:**

- Compact construction, timeless design.
- Fast and simple to install.
- Spring strength, closing speed and latching action easily altered.
- High mechanical efficiency for easy door operation.
- Door leaf widths up to 1,400mm



## TS 73 EMF

The electrohydraulic hold-open of the TS 73 EMF makes it effortless to hold doors open at angles from 75° to 180°. The doors lock securely in the event of an alarm or power failure. The standard arm can be upgraded to convert the TS 73 EMF into a free-swing door closer.

### Simply impressive:

- Integrated electrohydraulic hold-open function
- Hold-open point freely selectable from 75°
- Door leaf widths up to 1,400mm
- Can be expanded into a free-swing door closer



## TS 73V

Versatile, compact door closer with standard arm for doors of a wide variety of different designs and constructions.

### Simply impressive:

- Specifically for interior fire and smoke doors (EN 2–4)
- Door leaf widths up to 1,100 mm
- Adjustable closing force and speed
- One closer body for all four installation types, DIN-L/DIN-R
- Compact, timeless design



# Door closer with standard arm

## TS 72/TS 71

The universal door closer with a standard arm impresses with its easy, direct attachment to interior doors.

**Simply impressive:**

- Adjustable closing force EN 2–4
- Easy installation without mounting plates
- Compact design
- Economical solution for standard doors
- Adjustable latching action
- Timeless design
- Door leaf widths up to 1,100mm



## TS 68

The TS 68, dormakaba has developed a low-cost door closer which can be universally used on all common door types. It is particularly quick and easy to install – and does not require a mounting backplate.

**Simply impressive:**

- The low cost solution for standard doors.
- Compact design.
- Quick and easy to install.
- Two valves for optimum closing speed and reliable latching action.
- Door leaf widths up to 1,100mm





# Concealed door closers

## ITS 96



### Simply impressive:

#### ITS 96

- Extensive range of variants for barrier-free building as per DIN SPEC 1104
- EASY OPEN technology
- Adjustable closing force and closing time
- For door leaf widths up to 1400 mm
- Optionally available with hold-open function

### Simply impressive:

#### ITS 96 FL

- Fail-safe for door angle  $>0^\circ$
- For door leaf widths of up to 1,400 mm
- For single-leaf and double-leaf doors (at active door leaf)
- Can be combined with standard ITS 96 slide channels
- Suitable for barrier-free building in accordance with DIN 18040



#### ITS 96

- Single-leaf doors
- For standard doors and fire doors

#### ITS 96 EMF

- Single-leaf doors
- Electromechanical hold-open unit

#### ITS 96 GSR/ ITS 96 GSR-EMF

- Double-leaf doors
- Integrated door coordinator

#### ITS 96 FL

- Single-leaf and double-leaf doors
- Resistance-free opening

#### ITS 96 FL GSR/ ITS 96 FL GSR-EMF 1

- Double-leaf doors at active door leaf
- Resistance-free opening





The ITS 96 system offers an extensive range of solutions for the covered installation of door closers. EASY OPEN technology enables rapidly decreasing opening torque as per DIN SPEC 1104. With dormakaba ITS 96 door closers with EASY OPEN technology, the heart-shaped cam significantly and immediately reduces the opening torque to be overcome. This means that children, the elderly and people with disabilities in particular are able to open the door with minimal force.

# Floor spring

## BTS 80, BTS 75 V

Whether standard, narrow or wide, DIN left, DIN right or double action door – as universal floor springs, BTS 80 and BTS 75 V are designed for all types of doors. A comprehensive range of accessories ensures that they can be adapted to a wide variety of door constructions and different floor finishes. The individual functions of the floor springs fulfil a range of different requirements while offering high reliability and quality.



### Simply impressive:

#### BTS 80

- Concealed installation
- For single-leaf and double-leaf doors
- For door leaf widths up to 1400 mm
- For door-leaf weights up to 300 kg
- Extensive range of variants with hold-open and fail-safe
- Easy door opening in accordance with DIN SPEC 1104



#### BTS 80

- Preventive fire protection
- Up to 300 kg door-leaf weight



#### BTS 80 BSR, BTS 80 BSR EMB, BTS 80 BSR FLB

- Double-leaf doors
- Door coordinators



### Simply impressive:

#### BTS 75 V

- Concealed installation
- Adjustable closing force EN 1–4
- For door leaf widths up to 1,100 mm
- Including mechanical backcheck
- Easy door opening according to German Industrial Standard (DIN) SPEC 1104
- With integrated installation level



#### BTS 80, BTS 80 F, BTS 80 EMB, BTS 80 FLB

- Single-leaf doors
- Modular system

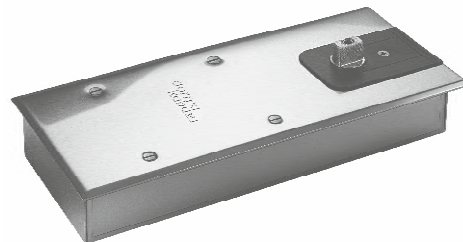


#### BTS 75 V

- Fire and smoke doors
- Up to 120 kg door-leaf weight

# BTS 84, BTS 65

The door closer integrated into the floor, specifically for double action doors. With an overall depth of just 40 mm, only a shallow floor recess is required for installation, including for upgrading.



## Simply impressive:

### BTS 84

- Concealed installation
- Suitable for double action doors
- For door leaf widths up to 1,100 mm
- Adjustable closing time
- Hold-open at a 90° angle

## Simply impressive:

### BTS 65

- Smooth closing operation virtually temperature immune
- Hold-open at a 90° angle
- Rugged construction for door weights upto 100kg
- Minimum floor recess dimension
- For door leaf widths up to 1,100



# System components and accessories

## RMZ XEA and RMZ smoke detector with integrated power pack

The RMZ smoke detector with integrated power pack supplements door closer systems for preventive fire protection. It supplies connected hold-open mechanisms with 24 V direct current and deenergises them in the event of an alarm or during a power failure (release).

**Simply impressive:**

- Possibility to connect additional smoke detectors (e.g. dormakaba RM-N)
- Potential-free change-over contact
- With integrated maintenance and operation display
- Suitable for lintel mounting
- RMZ is available in XEA and Contur designs

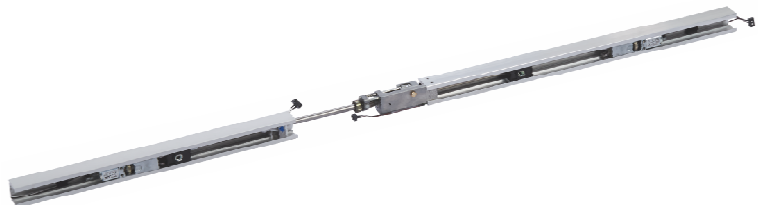


## G 96 GSR EMF 1 hold-open mechanism

The G 96 GSR EMF 1 hold-open mechanism allows the two leaves of a double-leaf door to be individually held open. It just makes sense: You get better economy with no reduction in security, quality or reliability!

**Simply impressive:**

- One hold-open system for two door leaves
- Barrier-free as per DIN 18040 and DIN SPEC 1104
- Suitable for doors in escape and rescue routes
- Approved by the DIBt in Berlin for use in hold-open systems
- Design freedom thanks to concealed installation
- Adjustable release force



## EM electric hold-open magnets

Hold-open mechanisms that keep fire protection terminals and smoke doors open. In case of fire, the trigger element disconnects the hold-open system as soon as the fire detector recognizes the fire.

### Simply impressive:

- For surface, flush and floor mounting
- Modular system for flexible application
- Concealed cable entry
- Optimal holding force with low power consumption
- Especially suitable for wide and heavy doors

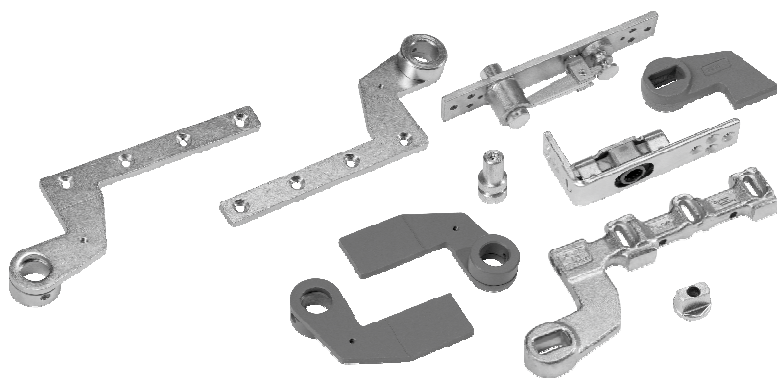


## Light metal door hinges, pin hinges, door levers, pivot bearings and spindles for floor springs

Our floor and frame door closer systems are so flexible thanks to our extensive accessories that you're optimally equipped for just about every door situation.

### Simply impressive:

- Light metal door levers for flush-mounted single action doors
  - Pin hinges with eccentric plastic bushing
  - Steel door lever, die-forged, galvanised
  - Pivot bearings also available with extended shafts
- Timeless design





# Door locks



## Mortise locks for timber doors

Locks from dormakaba convince with their high quality and durable functional security. Nearly all technical requirements can be satisfied with these high-quality materials, the careful manufacturing and comprehensive quality management.

With high-grade materials, careful manufacturing and a comprehensive quality management system, these products are able to satisfy virtually all the technical requirements likely to arise. Conforming to DIN 18251 and EN 12209, dormakaba locks offer unbeatable

### Simply impressive:

- The package contains the mortise lock with screws and strike plate
- Identical fixing screws for lock and strike plate simplify material management
- Latch handing can be reversed without the need for a tool, making dormakaba locks universally applicable
- The package contains the mortise lock with screws and strike plate
- With their robust, maintenance-free lock mechanism, dormakaba locks offer a long service life, even under tough operating conditions
- The high-quality satin stainless steel surface finish satisfies very high demands with respect to the appearance of the door furniture

200 / 300 Series features	281 288	289 285	271 278	279 275	381 388	389 385	371 378	379 375
Fire Rated	●	●			●	●		
Non- Fire Rated			●	●			●	●
Grade EN 12209-2	●	●	●	●				
Latch / Dead Bolt for 270 Series - Solid Metal Nickel Plated	●	●	●	●				
Latch / Dead Bolt for 280 Series - Stainless steel	●	●	●	●				
Forend SSS - SS304	●	●	●	●				
Grade EN 12209-3					●	●	●	●
Latch - Stainless steel					●	●	●	●
Dead bolt - Stainless steel					●	●	●	●
Forend SSS - SS316					●	●	●	●
Clamp follower - 8mm					●	●	●	●
Follower bearing - Steel bushes					●	●	●	●
Anti - saw protection					●	●	●	●
Anti - picking shield					●	●	●	●
Fixing holes - Bushed					●	●	●	●

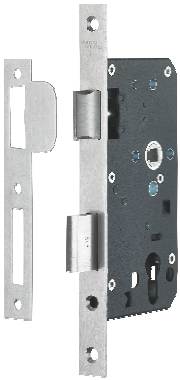
● Standard

# Door locks

## Wide Stile Locks

dormakaba locks offer the very highest standard of quality and functional reliability. With the use of high-grade materials, precise production techniques and a comprehensive quality management system, all dormakaba locks meet demanding

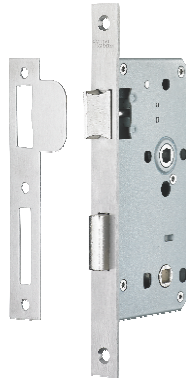
technical specifications. Additionally, locks conforming to the technical requirements of DIN 18251 and EN 12209 also offer unbeatable ease of use and security features.



**Simply impressive:**

**271/281/371/381 Sash Lock**

- Available in different backset 55, 60, 65, 70 & 80mm
- Common centre to centre 72mm
- 20mm Square forend
- Non-handed version
- Satin Stainless Steel Finish



**Simply impressive:**

**275/285/375/385 WC Lock**

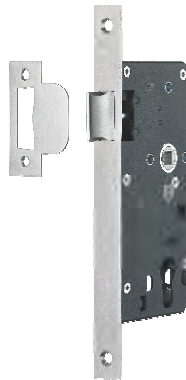
- Available in different backset 55, 60, 65, 70 & 80mm
- Common centre to centre 78mm
- 20mm Square forend
- Non-handed version
- Satin Stainless Steel Finish



**Simply impressive:**

**278/288/378/388 Dead lock**

- Available in different backset 55, 60, 65, 70 & 80mm
- 20mm Square forend
- Non-handed version
- Satin Stainless Steel Finish



**Simply impressive:**

**279/289/379/389 Latch lock**

- Available in different backset 55, 60, 65, 70 & 80mm
- 20mm Square forend
- Non-handed version
- Satin Stainless Steel Finish



# Door locks

## Narrow Stile Locks

dormakaba narrow stile locks offer compelling benefits, thanks to assured high quality and functional integrity in combination with long service lifetimes. Through high-grade materials,

careful manufacturing and a comprehensive quality management system, these products are able to satisfy all technical requirements.



**Simply impressive:**

**952 Narrow Stile Sash Lock**

- Available in different backset 25, 30, 35, 40 & 45mm
- Available in 92mm centre to centre
- 24mm Square forend
- Non-handed version
- Satin Stainless Steel Finish



**Simply impressive:**

**917 Narrow Stile Dead Lock**

- Available in different backset 25, 30, 35, 40 & 45mm
- 24mm Square forend
- Non-handed version
- Satin Stainless Steel Finish



**Simply impressive:**

**936 Narrow Stile Latch Lock**

- Available in different backset 25, 30, 35, 40 & 45mm
- 24mm Square forend
- Non-handed version
- Satin Stainless Steel Finish



**Simply impressive:**

**985 Narrow Swing Door Lock**

- Available in different backset 25, 30, 35, 40 & 45mm
- 24mm Square forend
- Non-handed version
- Satin Stainless Steel Finish



# Escape Locks

dormakaba Escape locks offer compelling benefits, thanks to assured high quality and functional integrity combined with long service lifetimes. With high-grade materials, careful manufacturing and a comprehensive quality management

system, these products are able to satisfy virtually all the technical requirements ever likely to arise. Conforming to BS EN 12209, BS EN 179 or DIN standards, dormakaba locks offer unbeatable performance, safety and security.



## Simply impressive:

### 180 Mortise lock

- Emergency Escape Lock
- Available in different backset 55 & 65mm
- 20mm forend
- DIN Left/Right
- DIN 18650 for fire and smoke check doors
- SS Forend finish



## Simply impressive:

### 181 Mortise lock

- Emergency Escape lock and key operated latch
- Available in different backset 55 & 65mm
- 20mm forend
- DIN Left/Right
- DIN 18650 for fire and smoke check doors
- SS Forend finish



## Simply impressive:

### 182 Mortise lock

- Escape lock with split 9 mm square follower
- Available in different backset 55 & 65mm
- 20mm forend
- DIN Left/Right - outward / inward opening
- DIN 18650 for fire and smoke check doors
- SS Forend finish



## Simply impressive:

### 183 Mortise lock

- Escape lock
- Available in different backset 55 & 65mm
- 20mm forend
- DIN Left/Right - outward / inward opening
- DIN 18650 for fire and smoke check doors
- SS Forend finish

# Door locks



The new generation of dormakaba SVP emergency-escape locks is ideally suited for use in escape and rescue routes as well as in fire and smoke doors. Any door can be safely protected with the emergency escape function and the self-locking facility.

**Improved protection of human life:**

- Emergency escape function in accordance with EN 179 and EN 1125
- Thanks to the emergency-escape function, the door can be opened in the direction of escape at any time by pressing the lever handle or the horizontal push bar

**Improved protection of property:**

- Automatic locking of the doors after closing
- Can be used in suitable door systems up to resistance class RC 2
- Increased tamper protection through improved mechanical process safety

**The improved functions not only simplify the process of opening the door, but also offer installation advantages:**

- Improved force transmission for problem-free opening even under difficult conditions
- Reliable locking and unlocking of motor locks through integrated power reserve module (SVP 2000 DCW® F)
- Integrated LED for status indication and error evaluation directly at the lock
- New operational modifications: DCW®, analog or CAN bus for motor lock variants

# Emergency-escape locks with automatic locking mechanism

## SVP/SVZ for single-leaf doors at a glance

### Version EN 179 + EN 1125

SVP/SVZ features	SVP 5xxx	SVP 4xxx	SVP 6xxx	SVZ 6xxx	SVP 2000 DCW®	SVP 2000 DCW® F	
Mechanical lock	●	●					
Lever handle-controlled lock			●	●			
Motor lock					●	●	
Access control lock				●			
Emergency escape function:	●	●	●	–	●	●	
Mechanical self-locking	●	●	●	●	●	●	
Mechanical process control	●	●	●	●	●	●	
Two-point locking	●	●	●	●	●	●	
Sabotage line		●	●	●	●	●	
Bolt monitoring		●	●	●	●	●	
Signalling of handle operation/emergency unlocking		●	●	●	●	●	
Door-open monitoring via trigger		●	●	●	●	●	
Cylinder contact		●	●	●	●	●	
External lever handle can be electrically coupled/decoupled			●	●			
Electrical motorised unlocking					●	●	
Adjustable unlocking time					●	●	
Permanent external access is possible (permanent open) <sup>1)</sup>			●	●			
Automatic locking mechanism can be disabled electrically (permanent door release) <sup>2)</sup>					●		
Automatic switching off of permanent open/permanent door release in case of a power failure			●	●	○ <sup>2)</sup>		
Electronic sequential control (anti-tamper protection)					●	●	
Automatic reset of the release when the door fails to open			●	●	●	●	
Approval in accordance with EN 179	●	●	●		●	●	
Approval in accordance with EN 1125	●	●	●		●	●	

● Standard    ○ Optional

1) Permanent open function also permissible on fire and smoke doors, as the doors have a tumbler for the case of a fire

2) In combination with the power reserve module

# Door locks

## Emergency-escape locks with automatic locking mechanism

SVP 5000/SVP 4000/SVP 6000/SVZ 6000

### Additional functions:

#### SVP 4000

- With querying of the door status

#### SVP 6000 – lever handle-controlled

- Electrically activated external lever handle for authorised access
- Universal connection to 12 V DC/24 V DC
- Versions: Operating/closed-circuit current

#### SVZ 6000 – access control lock

- Activatable internal and external lever handle
- One-piece follower
- No emergency-escape function

### Simply impressive:

#### SVP 5000

- Emergency-escape function as per EN 179 and EN 1125
- Automatic locking mechanism – no need for manual locking
- Universal trip latch
- Up to resistance class RC 2 in suitable door systems





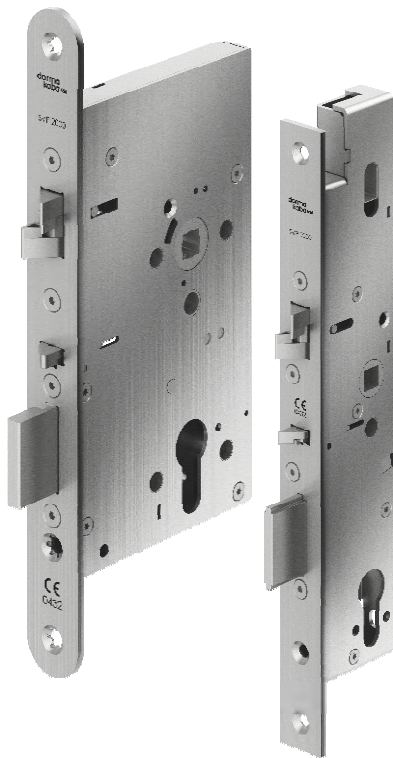


# Door locks

## Emergency-escape locks with automatic locking mechanism

### SVP 2000 DCW®/F (fire protection)

Emergency-escape motor locks for timber doors provide increased convenience thanks to motorised unlocking. Thanks to the emergency-escape function, quick opening of the door is possible from the inside. The automatic locking mechanism ensures that the door is securely locked as soon as the door closes.



#### Simply impressive:

##### **SVP 2000 DCW® motorised emergency-escape lock**

- LED for visual support during operation, maintenance and commissioning (e.g. operation modes and event notifications)
- Automatic relocking action
- With the DCW® bus, CAN bus and standalone operation modes
- LED status indication shows error messages, such as incorrect operating voltage, bus connection interrupted and more
- Can be used analogically without control unit (open and close only)
- Querying of the door status
- Convenient remote unlocking in combination with access control and escape route security systems
- DIN universal trip latch
- Certified as per EN 179 and EN 1125

#### Additional functions:

##### **SVP 2000 DCW® F – for fire and smoke doors**

With integrated power reserve module



# Door locks



The SVI (inactive emergency-escape lock, passive door leaf) and SVA (active emergency-escape lock, active door leaf) for double-leaf doors feature an automatic locking mechanism and are an optimal addition to the existing SVP portfolio. They are ideal for use in barrier-free door applications, among many others.

Saving lives on the one hand, protecting property on the other – SVI and SVA emergency-escape locks with automatic locking mechanism can do both. Thanks to their emergency-escape function, both the active and passive door leaves can be opened at any time in the direction of escape by actuating the lever handle or horizontal push bar (certified as per EN 179 and EN 1125). Automatic locking of the doors each time they are closed offers protection against unauthorised entry. In addition to improved mechanical sequential control (SVA) for increased tamper protection, the new integrated LED in the motorised emergency-escape locks enables easy commissioning and maintenance by means of visual status indicators right at the door application.

**Area of use:**  
Securing double-leaf doors that are permanent escape route doors from the inside, but may only be used by authorised persons from the outside.

**Functional description:**  
The combination of an active door leaf lock (SVA) and a passive door leaf lock (SVI) automatically locks the door every time it is closed. Both the passive and active door leaves can be opened in the direction of escape at any time in accordance with EN 179 or EN 1125.

Combination matrix SVA/SVI			
	SVI 5000	SVI 4000	SVI 2000 F
SVA 5000	●	○	-
SVA 4000	●	●	-
SVA 6000	●	●	-
SVA 2000	●	●	●
SVA 2000 F	●	●	●
● = Compatible    ○ = Optional    - = Not possible			

# Emergency-escape locks with automatic locking mechanism

## SVA/SVI for double-leaf doors at a glance

Features and functions of SVA/SVI lock combinations with automatic locking mechanism for double-leaf doors

		SVA active door leaf					SVI passive door leaf		
		SVA 5000	SVA 4000	SVA 6000	SVA 2000	SVA 2000 F	SVI 5000	SVI 4,000	SVI 2000 F
<b>Approvals</b>	Fire and smoke doors	●	●	●	● <sup>2)</sup>	●	●	●	●
	DIN EN 179/DIN EN 1125	●	●	●	●	●	●	●	●
<b>Emergency escape functions</b>	Door opening from inside via lever handle/push bar	●	●	●	●	●	●	●	●
	Forced closure function (C)	-	-	●	-	-	-	-	-
	Panic function (E) with knob/lever set	●	●	-	●	●	-	-	-
<b>Unlock</b>	From outside with key	●	●	●	●	●	-	-	-
	From outside via lever handle after electrical release (integration in access control systems)	-	-	●	-	-	-	-	-
	- Automatic reset of the release when the door fails to open	-	-	●	●	●	-	-	●
	- Adjustable unlock or relock time (programmable via TMS Soft®)	-	-	-	●	●	-	-	-
	- Permanent door release <sup>3)</sup>	-	-	-	●	● <sup>5)</sup>	-	-	● <sup>4)</sup>
	Permanent access possible (permanent open/all bolts open) <sup>1)</sup>	-	-	●	-	-	-	-	-
	Motor lock (suitable for automatic doors)	-	-	-	●	●	-	-	●
	Automatic switching off of permanent open/permanent door release in case of a power failure	-	-	●	○ <sup>3)</sup>	○ <sup>3) 5)</sup>	-	-	-
	Suitable for electronic cylinders	●	●	●	●	●	-	-	-
<b>Monitoring</b>	Message "Door open/closed"	-	●	●	●	●	-	-	-
	Message "Door locked/unlocked"	-	●	●	●	●	-	●	●
	Message "Handle operation/Emergency escape function"	-	●	●	●	●	-	●	●
	Message "Cylinder locking"	-	●	●	●	●	-	-	-
	Message "Drive dead bolt"	-	-	-	-	-	-	●	●
	Sabotage line	-	●	●	●	●	-	-	-
	DCW®/CAN bus interface	-	-	-	●	●			●
<b>Break-in protection</b>	Insurance-compliant locking (dual-point locking device)	●	●	●	●	●	●	●	●
	Mechanical self-locking	●	●	●	●	●	●	●	●
<b>Mode of operation</b>	Mechanical (without wiring)	●	-	-	-	-	●	-	-
	Mechanical with electrical monitoring	-	●	●	-	-	-	●	-
	Motorised unlocking	-	-	-	●	●	-	-	●
	External lever handle can be electrically coupled/decoupled	-	-	●	-	-	-	-	-
<b>Miscellaneous</b>	Mechanical process control	●	●	●	●	●	●	●	●
	Electronic sequential control	-	-	-	●	●	-	-	●

● = Yes    - = No    ○ = Optional

<sup>1)</sup> PERMANENT OPEN function also permissible on fire and smoke doors, as the doors have a tumbler for the case of a fire.

<sup>2)</sup> For fire and smoke doors in conjunction with the PR module (emergency power buffer).

<sup>3)</sup> In fire and smoke doors not approved for permanent door release, as approval is not guaranteed in the event of a fire.

<sup>4)</sup> Depending on the SVA lock used on the active leaf.

<sup>5)</sup> Only in combination with ED 100/250.

# Door locks

## Emergency-escape locks with automatic locking mechanism

### SVA and SVI 5000/SVA and SVI 4000/SVA 6000

The combination of an active door leaf lock and a passive door leaf lock automatically locks the door every time it is closed. Both the passive and active door leaves can be opened in the direction of escape at any time in accordance with EN 179 or EN 1125. Insurance-compliant lock with bolt. Product variants are available for timber and narrow stile doors and for profile and round cylinder variants depending on the product series.



#### Simply impressive:

##### SVA active leaf door locks

###### SVA 5000

- Purely mechanical lock with emergency-escape function and mechanical sequential control

###### SVA 4000

- Electrically monitored emergency-escape lock
- With integrated tamper-proof detectors for monitoring latches, cylinders, handles and bolts
- Versions: Operating/closed-circuit current

###### SVA 6000

- Electrically monitored emergency-escape lock with split follower for the electrical engagement and disengagement of the outside handle
- Status message for trip latch, bolt, cylinder locking and lever handle

#### Simply impressive:

##### SVI passive door leaf locks

###### SVI 5000

- A purely mechanical lock with emergency-escape function

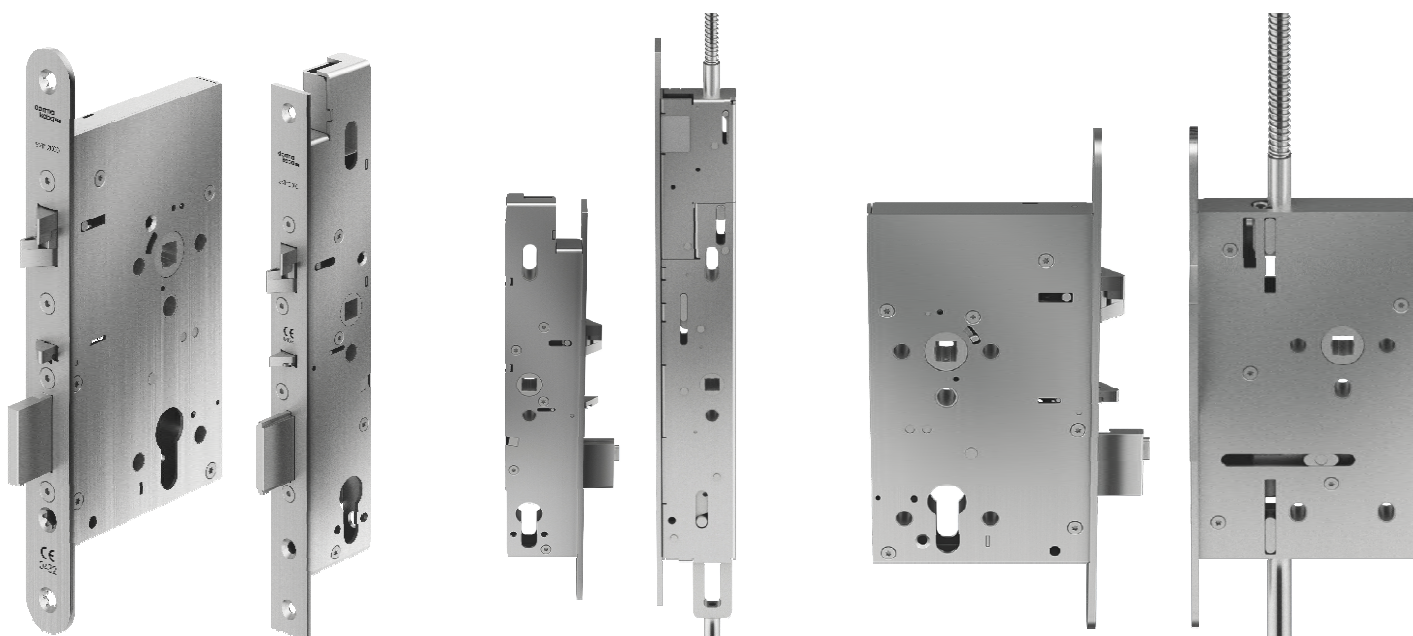
###### SVI 4000

- Electrically monitored emergency-escape lock
- Status message for lock rod and lever handle

# SVA 2000

## SVA 2000 F and SVI 2000 F (fire protection)

Emergency-escape lock with automatic locking mechanism and integrated power reserve module. Thanks to the emergency-escape function, quick opening of the door is possible from the inside. The automatic locking mechanism ensures that the door is securely locked as soon as the door closes.



### Simply impressive:

#### SVP 2000 motorised emergency-escape lock

##### SVA 2000

- Integrated LED with status indication for parameterisation and maintenance/error indication
- Operation modes for the motor lock: Analogically with control unit, via DCW® or CAN bus or autonomously without control unit
- Status message for latch, bolt, cylinder locking and lever handle
- Direct connection e.g. via the integrated bus to dormakaba ED single-action door operators or SafeRoute escape route security system

### Simply impressive:

#### SVA and SVI 2000 F – for fire and smoke doors

##### SVA 2000 F

- Smoke doors (permanent door release function excluded)
- Integrated LED with status indication for parameterisation and maintenance/error indication
- Operation modes: Analogically with control unit, via DCW® or CAN bus or autonomously without control unit

##### SVI 2000 F

- Motor lock for the passive door leaf
- Status message for lock rod and lever handle
- Integrated LED with status indication for parameterisation and maintenance/error indication
- Operation modes: Analogically with control unit, via DCW® or CAN bus or autonomously without control unit
- With top and bottom rod lock systems



# Door locks

## Emergency-escape locks with automatic locking mechanism

### M-SVP 2200 DCW<sup>®</sup>/5000/3000

The dormakaba M-SVP multipoint locking systems with automatic locking mechanism and emergency-escape function offer greater security and convenience for all common door designs in both private and commercial building applications. Thanks to the emergency-escape unlocking feature, the door can be opened from the inside at any time in case of danger by simply using the lever handle. Unlocking from the outside with a key is always possible as well. M-SVP multipoint locks are permitted for use in doors in escape routes and in fire and smoke doors.



**Simply impressive:****M-SVP 2000/M-SVP 2200 DCW®: motorised multipoint lock with automatic locking mechanism**

- Very convenient thanks to motorised locking and unlocking, especially in combination with access control systems
- Door closes up tightly thanks to two steel hooks
- In suitable door systems, a very high level of burglary protection up to resistance class RC 3 can be achieved
- Barrier-free outfitting of doors can be implemented in combination with automatic actuators as needed
- Daytime latch locking function and permanent door release for doors with a high opening frequency
- With detectors for querying the door status
- All control components can be elegantly integrated into the door frame profile

**M-SVP 2200 DCW®**

- Integrated dormakaba DCW® system bus technology
- Two additional bolts for optimisation of the lock

**M-SVP 5000: multipoint lock with automatic locking mechanism**

- Purely mechanical lock
- Can easily be upgraded without wiring
- Locking occurs automatically each time closing occurs

**M-SVP 3000: electromechanical multipoint lock with automatic locking mechanism**

- Convenient thanks to motorised unlocking, especially in combination with access control systems
- Barrier-free outfitting of doors can be implemented in combination with automatic actuators as needed
- Permanent door release for doors with a high opening frequency
- Mechanical self-locking



M-SVP 2000 and M-SVP 2200 DCW® with hooks



Latch bolt in the case of M-SVP 3000 and M-SVP 5000

# Door locks

## Emergency-escape locks with automatic locking mechanism

### M-SVP 3500/5500

Greater security for double-leaf escape route door systems: In combination with an emergency-escape strike box, a switch lock and the self-locking shootbolts, the dormakaba M-SVP 3500 and M-SVP 5500 door latches also offer the familiar advantages of automatic multipoint locks with emergency-escape function in double-leaf building doors. They are suitable for use in double-leaf emergency exits and panic doors as well as in fire and smoke doors.



M-SVP 3500 with strike box for double-leaf doors

#### Simply impressive:

##### M-SVP 3500

- Electromechanical multipoint lock with emergency-escape function for double-leaf doors
- Automatic locking mechanism each time closing occurs
- Convenient thanks to motorised unlocking of the active door leaf in combination with access control systems
- Permanent door release for doors with a high opening frequency
- Various feedback, such as: lever handle pressed, locked/unlocked etc.

##### M-SVP 5500

- Mechanical multipoint lock with emergency-escape function for double-leaf door systems
- Automatic locking each time closing occurs
- No wiring is required



Latch bolt in the case of M-SVP 3500 and M-SVP 5500



M-SVP 3500 in combination with PHA 2500 panic hardware fitting and SafeRoute escape route security system

# Panic hardware

## PHA 2501 and PHA 2501 VB

dormakaba offers the option of ordering parts of high-grade panic door locks without major considerations regarding compatibility for single-leaf timber or narrow stile doors. Both versions, PHA 2501 and PHA 2501 VB, provide maximum security in accordance with EN 1125 with all SVP emergency-escape locks with automatic locking mechanism of the latest generation.

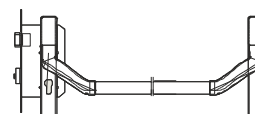
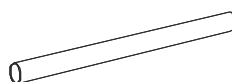
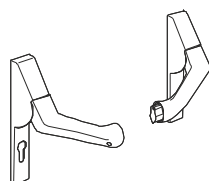
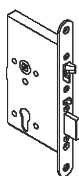
### Simply impressive:

- With just four variants and dormakaba SVP locks, many common requirements as per EN 1125 can be covered (PHA 2501 for narrow stile doors in the colour silver and stainless-steel finish, PHA 2501 VB for timber doors in the colour silver and stainless-steel finish)
- Extra escape route door security, e.g. with Safe Route, is still possible without any restrictions
- Suitable for multifunctional doors, e.g. with a swing door operator, when combined with motor lock
- Intuitive operation – recognised state-of-the-art escape route doors for people unfamiliar with your building



# Reliable and modular

Fitting and pushbar create an aesthetic design which can be easily seen and grasped. A high-performance panic hardware system is thus provided from a single source and suited to your needs.



## Wide selection

Locks for single-point and multipoint locking systems in different versions available

## Discreet aesthetic design

High-performance technology with extremely flat design

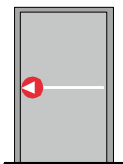
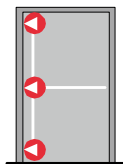
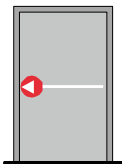
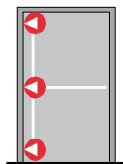
## High-grade bar

One pushbar. Adjustable for different door widths

## Harmonious system

All components are precisely matched to one another

# Possible combinations

Door types	Timber door		Narrow stile door	
				
Automatic locking mechanism, purely mechanical	SVP 5000	M-SVP 5000	SVP 5000	M-SVP 5000
Self-locking with feedback and monitoring functions	SVP 4000		SVP 4000	
Self-locking with connection to access control	SVP 6000	M-SVP 3000	SVP 6000	M-SVP 3000
Self-locking with connection to access control and door automation	SVP 2000 SVP 2000 F		SVP 2000 SVP 2000 F	



# Panic hardware

## PHA 2501-PC0 (SVI) and PHA 2501 VB

For double-leaf timber and narrow stile doors, dormakaba also offers all the components for a certified full emergency solution in accordance with EN 1125 from a single source. The panic hardware fittings for the active door leaf are the same here as those for a single-leaf solution, except that the passive door leaf fitting PHA2501-PC0 (SVI) is included. As a combination with all SVI and SVA emergency-escape locks with automatic locking mechanism is possible, the selection of functions is very flexible here.

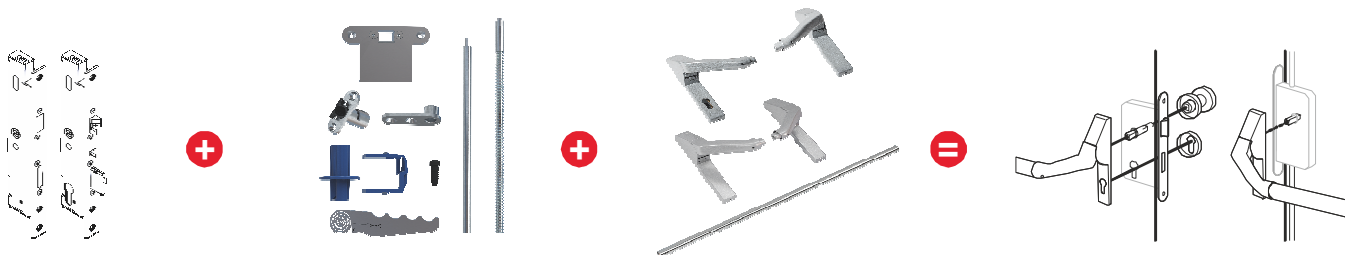
### Simply impressive:

- Equip double-leaf, full emergency doors in accordance with EN 1125 with just six variants and dormakaba SVI/SVA locks
- Suitable for multifunctional doors, e.g. with a swing door operator, depending on the selected SVI/SVA combination
- Recognised state-of-the-art technology for double-leaf escape route doors, e.g. for especially wide escape routes in meeting places



# Reliable and modular

The appearance of the fitting and push bar is absolutely identical to the single-leaf solution and independent of the lock combination used. This not only results in high-performance panic door locks, but a uniform aesthetic as well.



## Wide selection

Locks for single-point and multipoint locking systems in different versions available

## Convenient accessory sets

Everything you need for installation suitable for the door situation

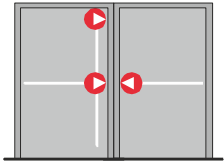
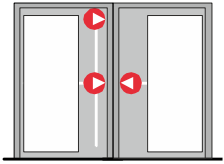
## High-quality panic fittings

Identical appearance for both door leaves, adaptable for different widths

## Harmonious system

All components are precisely matched to one another

# Possible combinations

Door types	Timber door	Narrow stile door
		

## Inactive door leaf

Active door leaf		Automatic locking mechanism, purely mechanical	Automatic locking mechanism with feedback and monitoring functions	Automatic locking mechanism with connection to access control and door automation
	Automatic locking mechanism, purely mechanical	SVA 5000 / SVI 5000 <b>F</b>	SVA 5000 / SVI 4000 <b>F</b>	–
	Automatic locking mechanism with feedback and monitoring functions	SVA 4000 / SVI 5000 <b>F</b>	SVA 4000 / SVI 4000 <b>F</b>	–
	Automatic locking mechanism with connection to access control	SVA 6000 / SVI 5000 <b>F</b>	SVA 6000 / SVI 4000 <b>F</b>	–
	Automatic locking mechanism with connection to access control and door automation	SVA 2000 / SVI 5000 <b>F</b>	SVA 2000 / SVI 4000 <b>F</b>	SVA 2000 / SVI 2000 F <b>F</b>
	Automatic locking mechanism with connection to access control and door automation	SVA 2000 F / SVI 5000 <b>F</b>	SVA 2000 F / SVI 4000 <b>F</b>	SVA 2000 F / SVI 2000 F <b>F</b>

# Panic hardware

## Single-leaf and double-leaf doors on escape routes



With the PHA 1000/PHB 1000 panic hardware series and the matching PHT 10 external fitting, doors on escape routes can be secured quickly and easily. All fittings are with left-handed / right-handed design. They are installed on the door leaf.

- Certified according to EN 1125
- As PHA 1000 or PHB 1000 pushbar
- Matching PHT 10 external fitting for door leaf thicknesses of 40 to 50 mm
- For single-leaf and double-leaf doors
- Surface versions in stainless steel and silver

### **F** Certificate of suitability

The panic hardware products are tested for use on fire and smoke doors.

In Germany, a certificate of suitability in connection with the respective fire and smoke door is also required.



# Panic hardware

## Single-leaf and double-leaf doors on escape routes

### Version EN 1125

Data & features		PHA 1000 1-point	PHA 1000 2-point	PHA 1000 3-point	PHB 1000 1-point	PHB 1000 2-point	PHB 1000 3-point
Modular system		–	–	–	–	–	–
Standard (non-expandable)		–	–	–	–	–	–
Standard doors (single-leaf/double-leaf)		●	●	●	●	●	●
Fire and smoke check doors (single-leaf/double-leaf) <b>F</b>		●	●	●	●	●	●
Glass doors		–	–	–	–	–	–
Door width	≤ 1000 mm	●	●	●	●	●	●
	≤ 1100 mm	–	–	–	●	●	●
Door height	≤ 2270 mm	–	●	●	–	●	●
	≤ 3400 mm <sup>1)</sup>	–	–	–	–	–	–
Max. door leaf weight in kg		200	200	200	200	200	200
Non-handed design		●	●	●	●	●	●
Dogging device <sup>2)</sup>		–	–	–	–	–	–
Security anti-thrust latch	for standard doors	–	–	–	–	–	–
	for fire and smoke check doors	–	–	–	–	–	–
Unlocking via electric strike		–	–	–	–	–	–
Monitoring switch on actuating bar		–	–	–	–	–	–
PHT external fittings For standard doors and fire and smoke check doors For door leaf thicknesses 40 to 50 mm		●	●	●	●	●	●
Extended handle spindle and bolts for door leaf thicknesses of 60 – 105 mm		–	–	–	–	–	–
Approved to EN 1125		●	●	●	●	●	●
CE mark for construction products		●	●	●	●	●	●

● yes – no ○ Option

<sup>1)</sup>Doors higher than 2500 mm lie outside the scope of EN 1125.

<sup>2)</sup>Not for Fire and smoke check doors.

### **F** Approval certification

The panic hardware products marked with an **F** are approved for use with fire and smoke check doors. Approval certification for the fire and smoke check door in conjunction with the dormakaba panic hardware product is additionally required in some countries – check local regulations.

Version EN 1125							
Data & features		PHA 2000 1-point	PHA 2000 2-point	PHA 2000 3-point	PHB 3000 1-point	PHB 3000 2-point	PHB 3000 3-point
Modular system		●	●	●	●	●	●
Standard (non-expandable)		–	●	–	●	–	–
Standard doors (single-leaf/double-leaf)		●	●	●	●	●	●
Fire and smoke check doors (single-leaf/double-leaf) <b>F</b>		●	●	●	●	●	●
Glass doors		●	●	●	–	–	–
Door width	≤ 1000 mm	●	●	●	●	●	●
	≤ 1300 mm	●	●	●	●	●	●
Door height	≤ 2270 mm	–	●	●	–	●	●
	≤ 3400 mm <sup>1)</sup>	–	●	●	–	●	●
Max. door leaf weight in kg		200	200	200	200	200	200
Non-handed design		●	●	●	●	●	●
Dogging device <sup>2)</sup>		●	●	●	●	●	●
Security anti-thrust latch	for standard doors	–	–	–	–	–	–
	for fire and smoke check doors	●	●	●	●	●	●
Unlocking via electric strike		○	○	○	○	○	○
Monitoring switch on actuating bar		○	○	○	○	○	○
PHT external fittings For standard doors and fire and smoke check doors For door leaf thicknesses up to 60 mm		●	●	●	●	●	●
Extended handle spindle and bolts for door leaf thicknesses of 60 – 105 mm		○	○	○	○	○	○
Approved to EN 1125		●	●	●	●	●	●
CE mark for construction products		●	●	●	●	●	●



# Mechanical key systems

## at a glance

	Serrated key system	Reversible key systems	
	pextra+ Six pins and optional profile scanning pin	quattro plus	
<b>Suitable for locking systems:</b>			
Complex	●	●	
Medium and large			
Small and medium			
<b>One key for everything (door cylinder, letterbox, furniture etc.)</b>	●	●	
<b>Tumbler series</b>		4	
<b>Tumbler pin pairs (per cylinder side)</b>			
Max. 20 active tumbler pin pairs, plus cross element			
Max. 22 active tumbler pin pairs in 85 possible positions			
Max. 22 active tumbler pin pairs in 44 possible positions		●	
Max. 16 active tumbler pin pairs in 32 possible positions			
<b>Increased key copy protection thanks to moving element</b>			
<b>European patent* – patent term</b>	2032	2033	
<b>Brand protection with figurative mark</b>	●	●	
<b>Classification key in accordance with EN 1303:2015-08/DIN 18252:2018-05</b>			
Standard version	1/6/0/B/0/C/6/C	1/6/0/B/0/C/6/B	
Option with two insert mounting screws (BS1 version)		1/6/0/B/0/C/6/C	
Option with increased drilling and pulling protection (LAM version)	1/6/0/B/0/C/6/D	1/6/0/B/0/C/6/D	
Classification in accordance with VdS – VdS classes B/BZ/BZ+	○	○	
<b>Fire protection</b> – cylinder tested in accordance with EN 1634-1 and EN 1634-2	●	●	
<b>Key shapes</b>			
Standard key shapes	Square bow	Smart key clip, blue	
Optional key shapes	Trend key Metal bow RFID clip	Large key Long bow RFID clip	
<b>Colours as optional orientation aid</b>			
Mini clip colours	5		
Large clip colours	11		
Trend key clip colours	6		
Metal clip colours	3 + neutral		
Smart key clip colours		12	
Large key clip colours		12	
RFID clip colours – integration into electronic systems	6	6	
<b>Special functions** available (excerpt shown below)</b>			
Modification to access permission	SUZ/BAZ	BAZ	
Time-limited access (SAT)		○	
Thermally insulated locking cylinder (TIC)		○	
Cylinder lockable on both sides (BSZ)	○	○	
Emergency opening with emergency key function (GF)	○	○	

● Standard ○ Optional

\*Not valid in all countries – for more details, see [worldwide.espacenet.com](http://worldwide.espacenet.com). \*\*Special functions are to be checked with regard to their combinability with one another and the availability of cylinder types.

Reversible key systems		
	penta cross	expert plus
	●	●
	●	●
	5	4
	● 78 possible positions	
		●
	●	
	2036	2033
	●	●
	1/6/0/B/0/C/6/B	1/6/0/B/0/C/6/B
	1/6/0/B/0/C/6/C	1/6/0/B/0/C/6/C
	1/6/0/B/0/C/6/D	1/6/0/B/0/C/6/D
	○	○
	●	●
	Smart key clip, black	Smart key clip, blue
	Large key Long bow RFID clip	Large key Long bow RFID clip
	12	12
	12	12
	6	6
	BAZ	BAZ
	○	○
	○	○
	○	○
	○	○



# Access management

## Cleverly solved with a locking system

Regardless of whether it's a serrated or reversible key system, a locking system gives you a comprehensive solution for ensuring access security. Based on your requirements, you generate a solution that's suitable for you – regardless of whether it's "one key for everything", a residential building system or a simple or complex locking system. You'll also benefit from our large selection of types. Integrate furniture cylinders, key switches or lift controls into your locking system, for example.



### Same-key locking cylinders, or "one key for everything".

Used in single-family homes, for example.

All, or only selected, locking cylinders can be opened with the same key.

This simplifies handling and allows for a smaller key ring

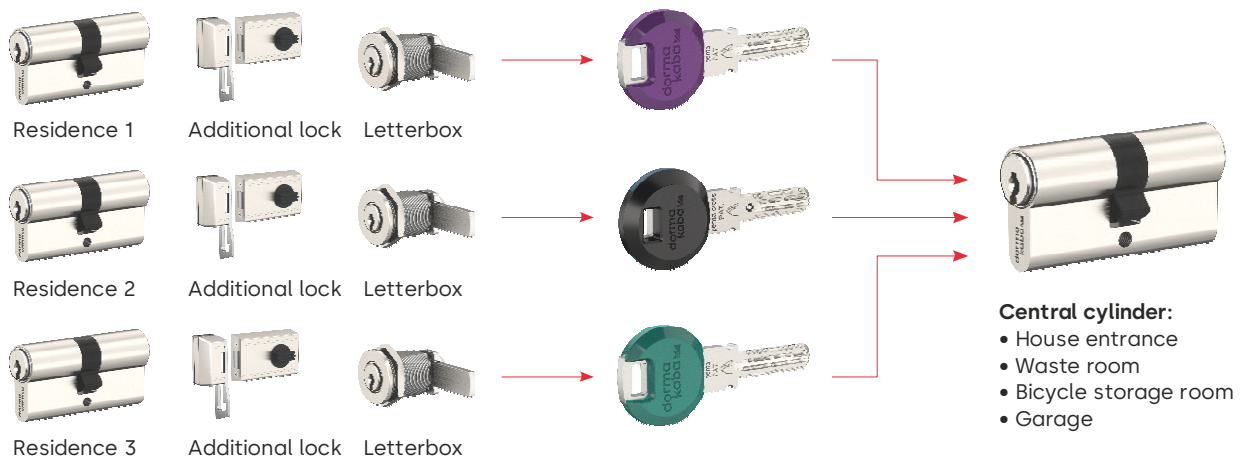
### Locking cylinders or doors



### Central locking systems

Used in residential complexes, for example. Several different individual keys can lock central locking cylinders.

There are also individual locks which can only be locked with one key



With the **manager locking system** special type, the central and common areas of several buildings (locking systems) spread out in different locations can be locked with just a single key (manager key).

### Master key systems

Used in office buildings and schools, for example.

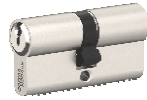
There are single-locking cylinders, as well as one or more higher-level keys (master keys) which lock all the cylinders of the system.

Individual keys (ES):

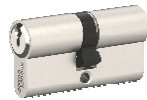
Lock only certain doors



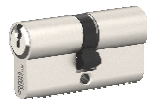
Locking cylinders or doors



Secretarial service



Sales



IT



Master key (HS):  
Locks all doors

### General master key systems

Used in large office buildings or at universities, for example.

The functions of a master key system are expanded with general master keys, master group keys and group keys.

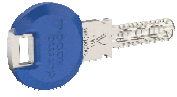
Group key (GS):

Locks a specific area



Individual key (ES):

Locks only certain doors



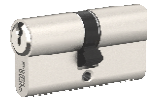
Locking cylinders or doors



Sales 1



Sales 2



IT

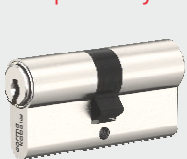


Accounting

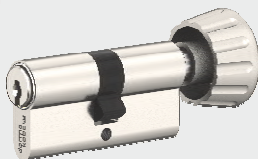


General master key (GHS):  
Locks all doors

### Sample of cylinder types



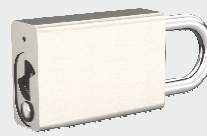
DZ



DKZ



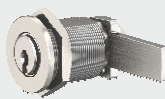
HZ



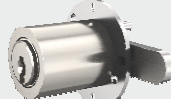
VHZ



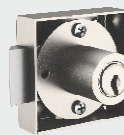
AZ



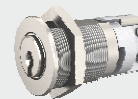
BMZ



MZ



MAS



SZ

- DZ Double cylinder
- DKZ Thumbturn cylinder
- HZ Half cylinder
- VHZ Padlock cylinder
- AZ Rim cylinder
- BMZ Cam cylinder
- MZ Furniture cylinder
- MAS Furniture stop lock
- SZ Switch cylinder

\*Different types are available depending on the locking system

# Mechanical key cylinders

## Serrated key system

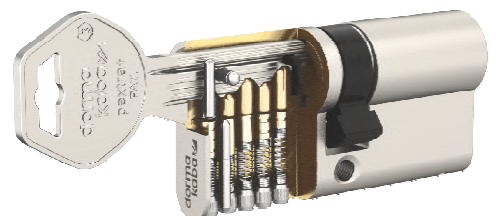
### dormakaba pextra+



Security locking cylinder with extra protection. In the dormakaba pextra+ locking system, key security is increased significantly with a key profile. The profile is created using an elaborate milling process and makes manipulation considerably more difficult. dormakaba pextra+ is the premium locking system from dormakaba in conventional toothed-key applications and is suitable for complex and large locking systems with high security requirements.

#### Simply impressive:

- Locking cylinders can be selected with five, six or seven tumbler pins for even greater decoding protection
- Improved insertion of the key into the key slot thanks to an angled taper in the barrel
- Steel elements in the cylinder housing and barrel offer increased protection against drilling out
- Key copy protection thanks to optional active pin in the cylinder
- Patent term until 2032
- Optional security elements for even greater protection and useful special functions
- Integration into electronic systems with RFID clip (can also be retrofitted)
- Available as works or partner system
- Environmental product declarations (EPDs) available





# Reversible key system

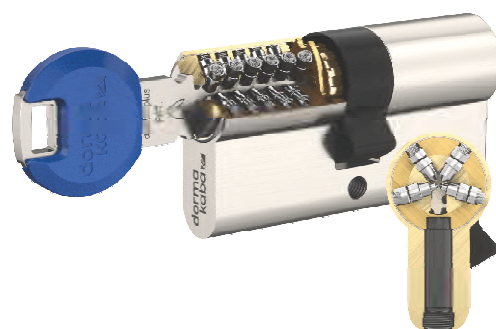
## dormakaba quattro plus

The four radially arranged pin rows offer extra security and increased protection against common break-in methods.

The mechanical locking cylinder offers time-limited access through the SAT special function. This is particularly suitable for sophisticated applications and medium to large locking systems.

### Simply impressive:

- 4 radially-arranged pin rows
- Up to 22 active tumbler pin pairs
- A total of 44 possible tumbler positions
- Patent term until 2033
- Suitable for large locking systems
- Modular system structure for economical adaptation to new requirements
- Optional security elements for even greater protection and useful special functions
- SAT (secure access temporary) special function
- Integration into electronic systems with RFID clip (can also be retrofitted)
- Environmental product declarations (EPDs) available

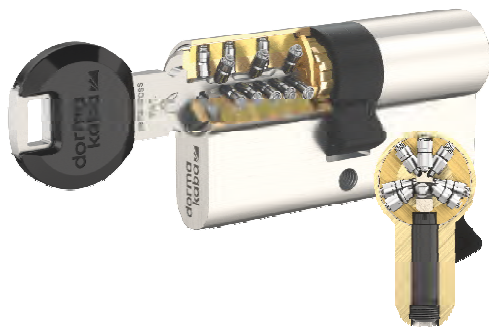




# Reversible key system

## dormakaba penta cross

With its five radially arranged pin rows, this locking cylinder ensures a high degree of security. It enables use in especially complex and sophisticated locking systems. A wide variety of different types, such as furniture and switch cylinders, can also be integrated into the locking system. Planning of your locking system is flexible thanks to the keylink planning method. It makes adjustments and expansions possible later on.

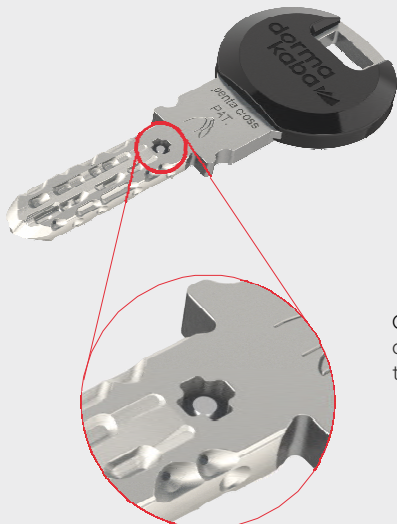


### Simply impressive:

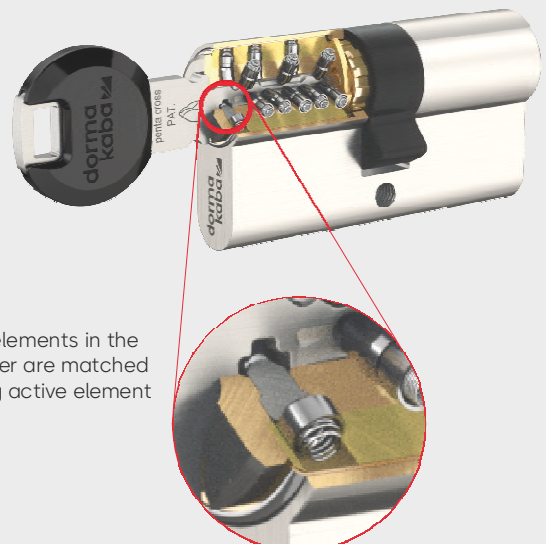
- Five radially arranged tumbler series
- Up to 22 active tumbler pin pairs (20 with cross)
- A total of 85 possible tumbler positions (78 with cross)
- penta patent term until 2033
- penta cross patent term until 2036
- penta cross with additional active element for high copy protection
- Suitable for large and complex locking systems
- Modular system structure for economical adaptation to new requirements
- Optional security elements for even greater protection and useful special functions
- Structured planning and organization of complex locking systems with keylink
- Integration into electronic systems with RFID clip (can also be retrofitted)
- Environmental product declarations (EPDs) available

### High-level copy protection – penta cross

In the penta cross system, there is a cross-shaped recess with a moving active element in the key, which represents increased 3D copy protection. When the key is inserted, the movement of the active element is queried by security elements matched to it in the locking cylinder. The matching lock cylinder can only be locked and unlocked when the moving active element is present in the key.



Cross-shaped recess with a moving active element in the key



The security elements in the locking cylinder are matched to the moving active element in the key.

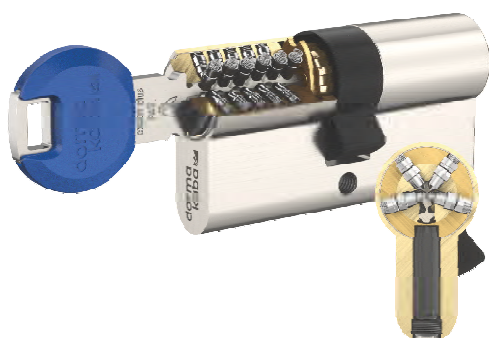
# Reversible key system

## dormakaba expert plus

The dormakaba expert plus reversible key systems can be customised for the customer on site by authorised specialist dealers. This means that the specialist partners are the only contact partners for key copies using a special dealer code. The expert plus system offers a high level of protection and convenient operation for serial cylinder systems or medium to large master key systems. This makes it ideal for securing and organising access for private homes, apartments or small and medium-sized businesses. The mechanical locking cylinder offers time-limited access through the SAT special function.

### Simply impressive:

- 4 radially-arranged pin rows
- Up to 22 active tumbler pin pairs (20 with cross)
- A total of 44 tumbler positions (40 with cross)
- expert plus patent term until 2033
- expert cross patent term until 2036
- Suitable for serial cylinder systems and medium to medium-large locking systems
- Modular system structure for economical adaptation to new requirements
- Optional security elements for even greater protection and useful special functions
- SAT (secure access temporary) special function available
- Integration into electronic systems with RFID clip (can also be retrofitted)
- Environmental product declarations (EPDs) available



# Locking cylinders straight from your specialist partner

**Our patented cylinder systems are available either as works or specialist partner systems.**

Whereas the works systems (e.g. gemini, quattro and penta) are only produced at our works, our partner systems (e.g. pextra+ or expert plus) can be obtained directly from authorised specialist partners.

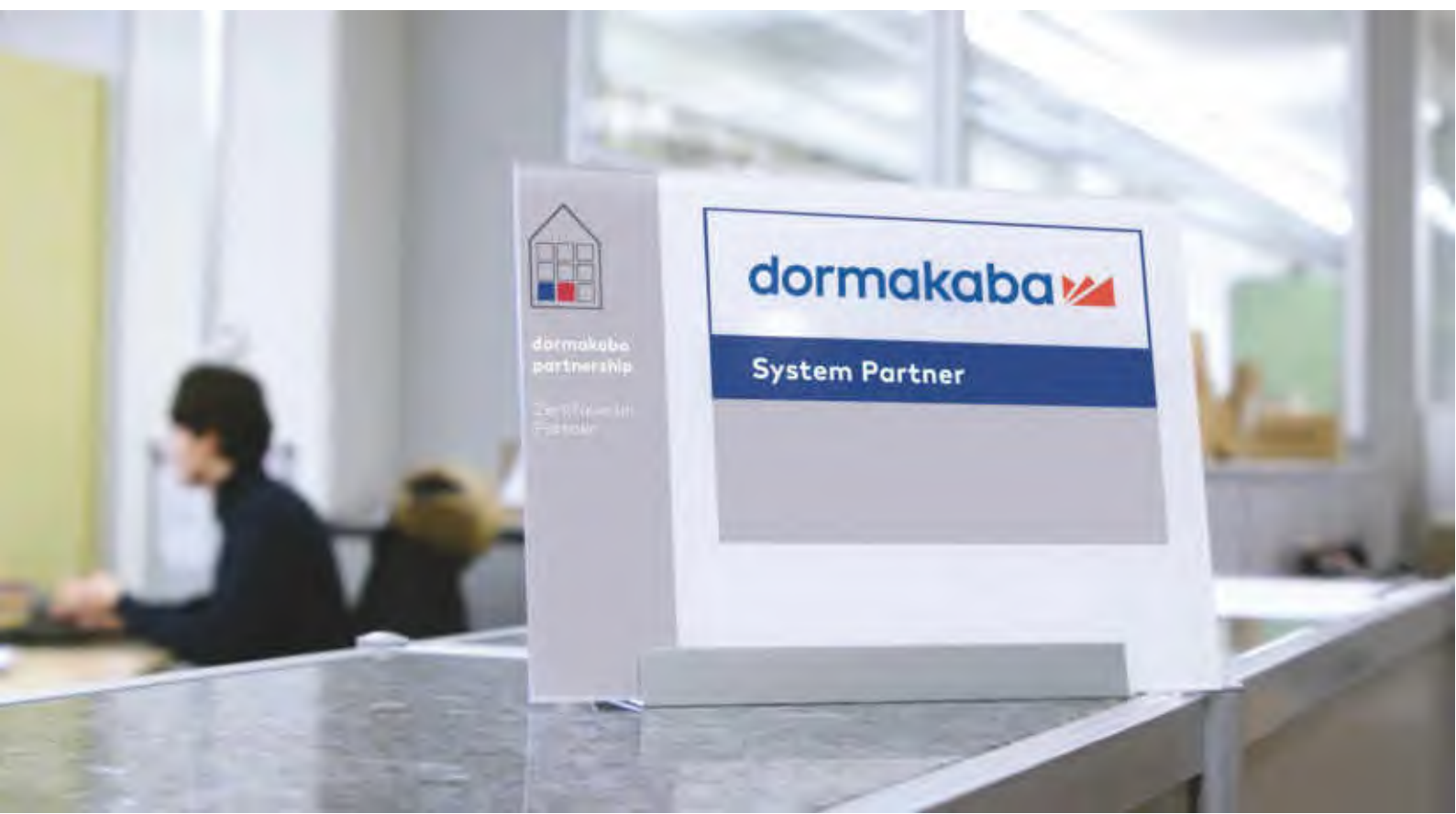
By investing in a specialised key milling machine and following corresponding training and certification, our specialist partners are able to assemble the cylinders and mill the key blanks themselves.

The keys and key blanks of our patented partner systems aren't available anywhere else. Our authorised specialist partners obtain the cylinder components and key blanks directly from the factory using a specific dealer code. A duplicate key is then created from the patented key blank. Keys can only be reordered through identification with the security card or the proof of identity method agreed upon in the respective individual case.

Key milling machines aren't able to create a duplicate key from our key blank until approval has been granted by dormakaba through the transfer of a password to the partner. For dormakaba expert, only machines from two manufacturers in the market are currently able to produce our technically sophisticated keys from the key blanks and comply with the required measurement tolerances in the micrometre range. If these tolerances aren't met, the key won't lock. The entire process, from development and manufacture of a new key milling machine to commissioning by the partner, is contractually defined with the manufacturers of the key milling machines.



Futura Pro key milling machine from Silca for dormakaba specialist partners







# Serrated key systems

## Choose the form and function of the serrated keys.



**Standard key** with angular bow and lateral blocking element as well as optional mini clip



**Trend key** with colour clip for ergonomic opening

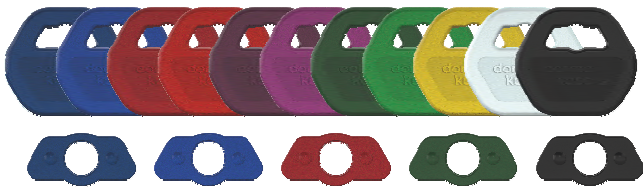


**Metal bow key** for easier operation with multiple locking systems or deep roses



**Key with RFID transponder clip** for integration into electronic systems for access control

### Colours as optional orientation aid



For the **standard key**, there are eleven colours for large clips and five colours for mini clips.



**Trend key** is available in dark blue, light blue, red, green, yellow and black.



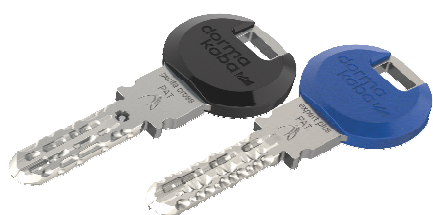
The **metal bow key** is delivered without a coloured part as standard. Red, green and black parts are also available as an orientation aid.



In the case of **RFID transponder clips**, six coloured ring elements make orientation easier.

# Reversible key systems

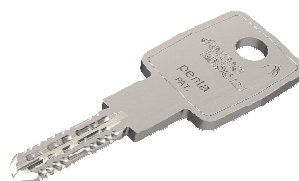
## Choose the form and function of the reversible keys.



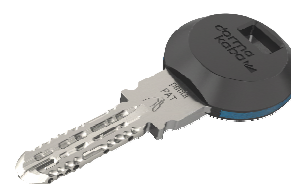
**Standard key** with black clip for penta and penta cross as well as blue clip for all other reversible key systems



**Key with large key clip**



**Key with long bow**



**Key with RFID transponder clip** for integration into electronic systems for access control

### Colours as optional orientation aid



For the **standard key**, there are smart key clips in 12 colours.



The **key with a large key clip** is also available in 12 colours.



In the case of **RFID transponder clips**, six coloured ring elements make orientation easier.





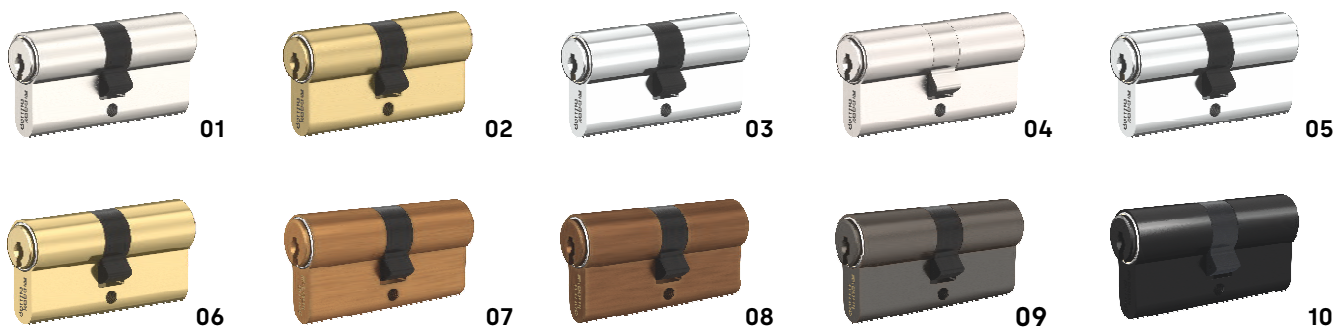
# Refined surface finishes



Uniform black for serrated and reversible key systems

Colours and surface finishes have always been playing a significant role. This is why mechanical locking cylinders from dormakaba are available in a wide variety of different surface finish versions. Nickel-plated and bare brass are the standard surface finishes. The black locking cylinder was added to our range as BKM, matt black, and is based on RAL colour 9005. Depending on the customer's needs and wishes, the various different surface finishes can be combined within a locking system.

## Surface finishes



- |    |                                |    |                     |
|----|--------------------------------|----|---------------------|
| 01 | NI   Bare nickel*              | 06 | MP   Polished brass |
| 02 | MS   Bare brass*               | 07 | BH   Light brown    |
| 03 | CR   Standard chrome           | 08 | BM   Medium brown   |
| 04 | NIC   Chemically nickel-plated | 09 | BD   Dark brown     |
| 05 | CRP   Chrome-plated, polished  | 10 | BKM   Matt black    |

\*Standard surface finishes

Colours are representative only and not available for all cylinder types or thumbturns. There may be some slight colour differences between the reversible key and serrated key systems in some cases.

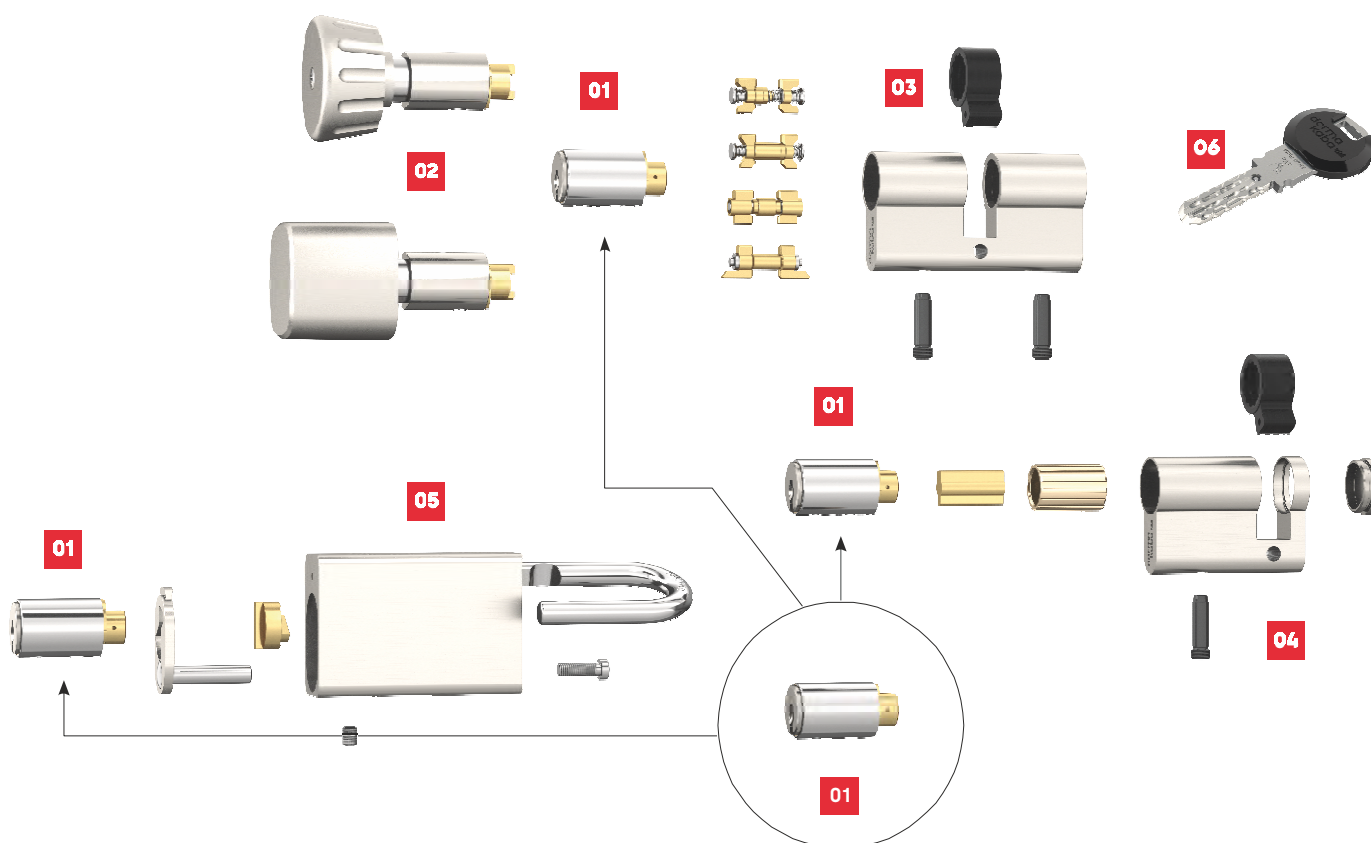
# Modular design. Maximum flexibility. Reversible key systems

## Quick and cost-effective adaptation

Reversible key systems offer high investment security, even if requirements change over time. A modular, forward-compatible system design enables quick and easy conversion of the cylinder to other lengths and types. The existing lock cylinder can be adapted to a new length with little effort, for example for a new entrance door, or can be fitted with an elegant thumbturn knob.

## Sustainably economical

The heart of the system are modular exchangeable inserts which can easily be used in all cylinder types, e.g. half cylinders, thumbturn cylinders, rim cylinders, furniture cylinders, padlocks and cam cylinders. Combination with cylinder housings of different lengths (complete housings), couplings and tappet hubs opens up nearly limitless options for the conversion of an access solution which has already been provided to the customer.



**01**  
The modular insert contains the locking authorisation for the keys and can be integrated into all reversible key cylinder types

**02**  
A thumbturn can very easily be retrofitted

**03**  
Different housing lengths of the double cylinder make easy length conversion possible

**04**  
Half-cylinder with an insert

**05**  
Padlock with an insert

**06**  
Key with locking authorisation as per the locking plan

# Added value for your locking system

## Useful special functions

Depending on the requirement, you can supplement your custom locking solution with one of our many special functions. These functions offer you added value in both functionality and utility. For details on this, see the **Special functions for serrated keys** and **Special functions for reversible keys** brochures.

## Need a key change?

## No reason to replace the cylinder

## Self-changing cylinder (SUZ)

### Your requirements:

You don't want to replace all the cylinders if a key is lost or a renter moves out with the key. Or perhaps you'd like to block access to tradespeople following completion of the building phase.

### How it works:

There are three generations of key for the self-changing cylinder (or two generations in the case of SUZ1). The cylinder lock can therefore be changed up to two times. Turning the key of the subsequent generation in the cylinder prevents the previously used key from being able to unlock anymore. No additional tools or keys are required here.



**Key of the first generation**



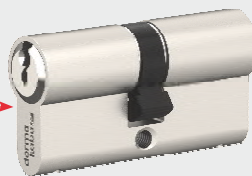
**Key of the second generation**

By inserting it and turning it 360°, the keys of the first generation lose their locking authorisation.



**Key of the third generation**

By inserting it and turning it 360°, the keys of the second and first generations lose their locking authorisation.



**Locking cylinder**

The conversion procedure doesn't require a separate conversion key – there's no need to replace the locking cylinder.

### Simply impressive:

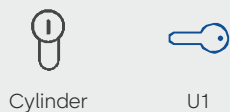
- Lock can be changed up to two times
- No special conversion key is required
- "Old" key can no longer be used straight after conversion of the cylinder
- Locking cylinder doesn't need to be replaced when a renter moves out or if a key is lost
- Reduces both costs and effort
- An option for responding to a lost key, enabling control of your locking system
- Available for serrated key systems only

# Need to change an access permission? A conversion key makes it possible!

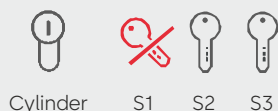
## Building-phase function (BAZ)



All keys have access permission



Conversion key U1 is used:  
Pin combination in the cylinder is modified



S1 had its access permission withdrawn



Conversion key U2 is used:  
Pin combination in the cylinder is modified



S1 and S2 no longer have access permission

### Your requirements:

Following completion of the building phase, you would like to withdraw access from the tradespeople and dispense with the need for a provisional locking system. Or perhaps you'd like to quickly change the access permission due to a key being lost, without having to replace all the cylinders.

### How it works:

For the BAZ cylinders, there are up to three generations of keys and a corresponding conversion key. A one-time conversion of the cylinder with the conversion key terminates the permission of the first key. Only the key of the subsequent generation will then work.

### Simply impressive:

- Lock can be changed up to two times
- Locking cylinder doesn't need to be replaced when a renter moves out or if a key is lost
- Reduces both costs and effort
- An option for responding to a lost key, enabling control of your locking system
- Increased security– conversion keys must be destroyed

# Access for service personnel?

## Easy with the turn of a key!

### Secure access temporary (SAT)

#### Your requirements:

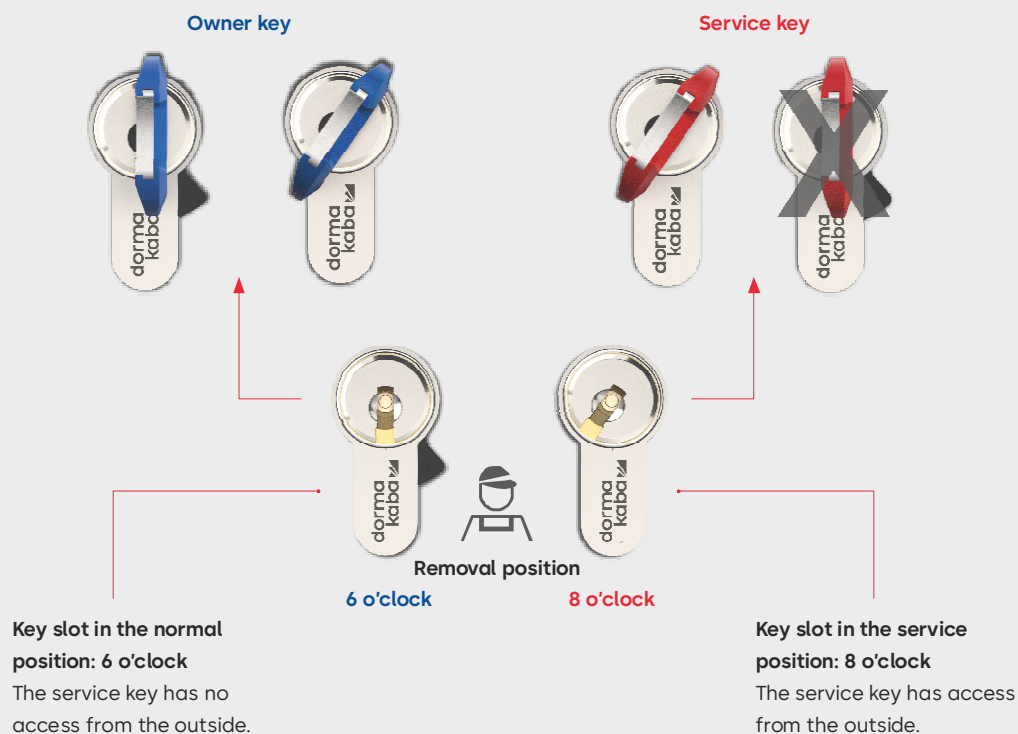
You'd like to grant time-limited access to third persons, e.g. cleaning personnel, dog sitters/babysitters or neighbours while on holiday.

#### How it works:

There's one owner key and one service key. If the owner key is removed from the SAT locking cylinder in the 8 o'clock position – by the house owner, for example – the door can also be unlocked with the service key. If the owner key is removed in the 6 o'clock position (vertical position), the door can't be opened with the service key from the outside. If the service function is active and the door is locked with the service key from the inside, the owner can still unlock the door from the outside even if the service key is located in the cylinder on the inside. They always have access.

#### Simply impressive:

- Purely mechanical solution with owner and service keys
- Owner key grants or withdraws the service key locking authorisation
- Time-limited access, as locking authorisation occurs with a key turn
- Service key can be given additional locking authorisations within a locking plan
- Available exclusively for the quattro plus and expert plus systems



# Damp and cold outside? Everything's dry inside.

## Thermally insulated cylinder (TIC)

### Your requirements:

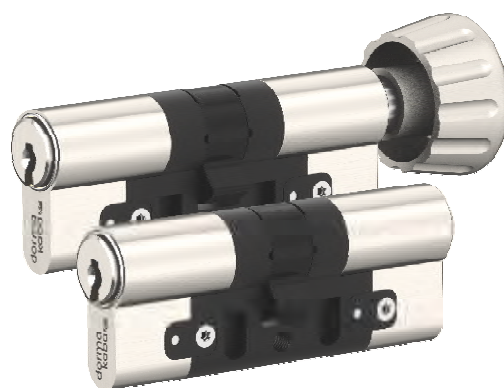
You'd like to prevent water condensation forming inside the locking cylinder on the doors of passive houses. Or perhaps there are locks in your locking system which are exposed to especially harsh weather.

### How it works:

The separation of outside and inside using plastic components ensures thermal insulation. Water condensation formation on the inside of the door can't occur even in extreme cold. A foam rubber seal on the outside of the cylinder protects against draught and driving rain.

### Simply impressive:

- Protection against water condensation and ice forming on the inside of the cylinder
- Protection against driving rain on the outside and greater protection against draught
- Ideal for passive houses, pergola doors and side doors
- Secure and guaranteed access, even in outside temperatures down to  $-20^{\circ}\text{C}$
- Available with the lockable-on-both-sides function or with a thumbturn
- Available for reversible key systems only



# Heavy use, corrosion, dust or insects? No problem.

## Special designs

### Your requirements:

You experience unusual environmental influences or have especially high demands on the locking cylinder and would therefore like additional protection for your locking cylinders.

### How it works:

For a variety of different environmental influences, we offer dust and spray-water protection (SSW) and dust and insect protection (SIS). For those located near the sea, we recommend the seawater-resistant version (SWF). In the case of special stresses or if corrosion is expected, the chemically nickel-plated version (NIC) is a good fit.





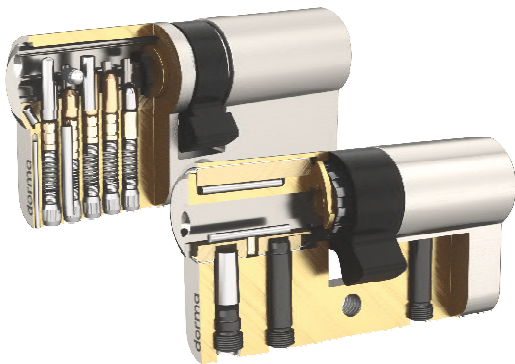
# Attack coming from the outside? Strong resistance from the inside. Safety versions

## Your requirements:

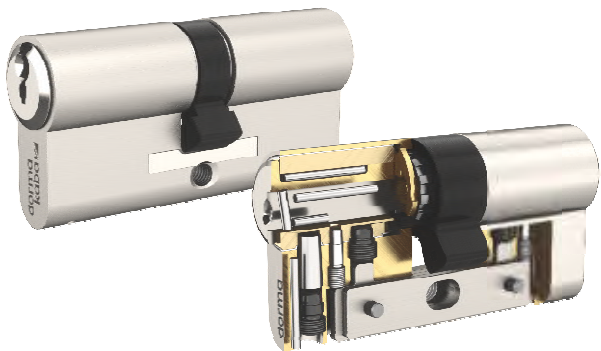
Depending on the door situation, you have different safety requirements when it comes to burglary protection.

## How it works:

dormakaba locking cylinders offer good basic protection thanks to the use of high-quality materials. Configure your locking cylinder with different safety features like the VdS version, drilling protection, the slot version, a predetermined breaking point or pulling protection in the case of serrated key systems.



Locking cylinder with increased drilling protection (BS)



Serrated key system with slot version and reversible key system with increased drilling and pulling protection (BZ-LAM)

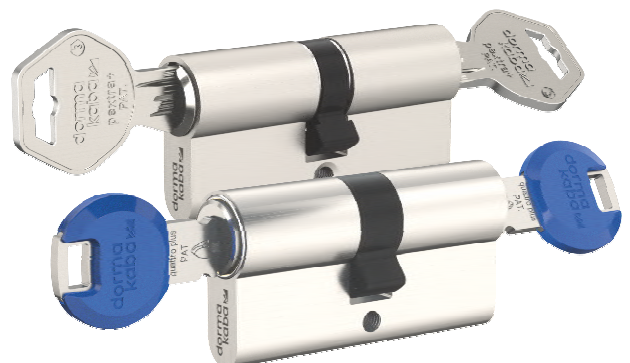
# Left your key inserted on the inside? No problem! Cylinder lockable on both sides (BSZ)

## Your requirements:

You'd like to be able to unlock doors even if a key is still inserted on the opposite side, e.g. in the case of inadvertent closing of the front door.

## How it works:

The double cylinder makes it possible to unlock the door from one side using an authorised key if a key is inserted and turned to any position on the opposite side. The inserted key turns at the same time. This function is ensured on both sides of the double cylinder.



Outside of the door

Inside of the door

# Locked from the inside?

## Not an obstacle in case of emergency.

### Emergency key function (GF)



#### Your requirements:

You'd like to be able to unlock doors in an emergency or dangerous situation, even though a key is inserted on the inside. In every other case, the private sphere has to be guaranteed, e.g. in the case of doors in supervised residence halls.

#### How it works:

The double cylinder makes it possible to unlock the door from one side if a key is inserted on the other side and turned to any position, but not with a standard key. Only a specially managed and registered emergency and danger key will do.



#### Simply impressive:

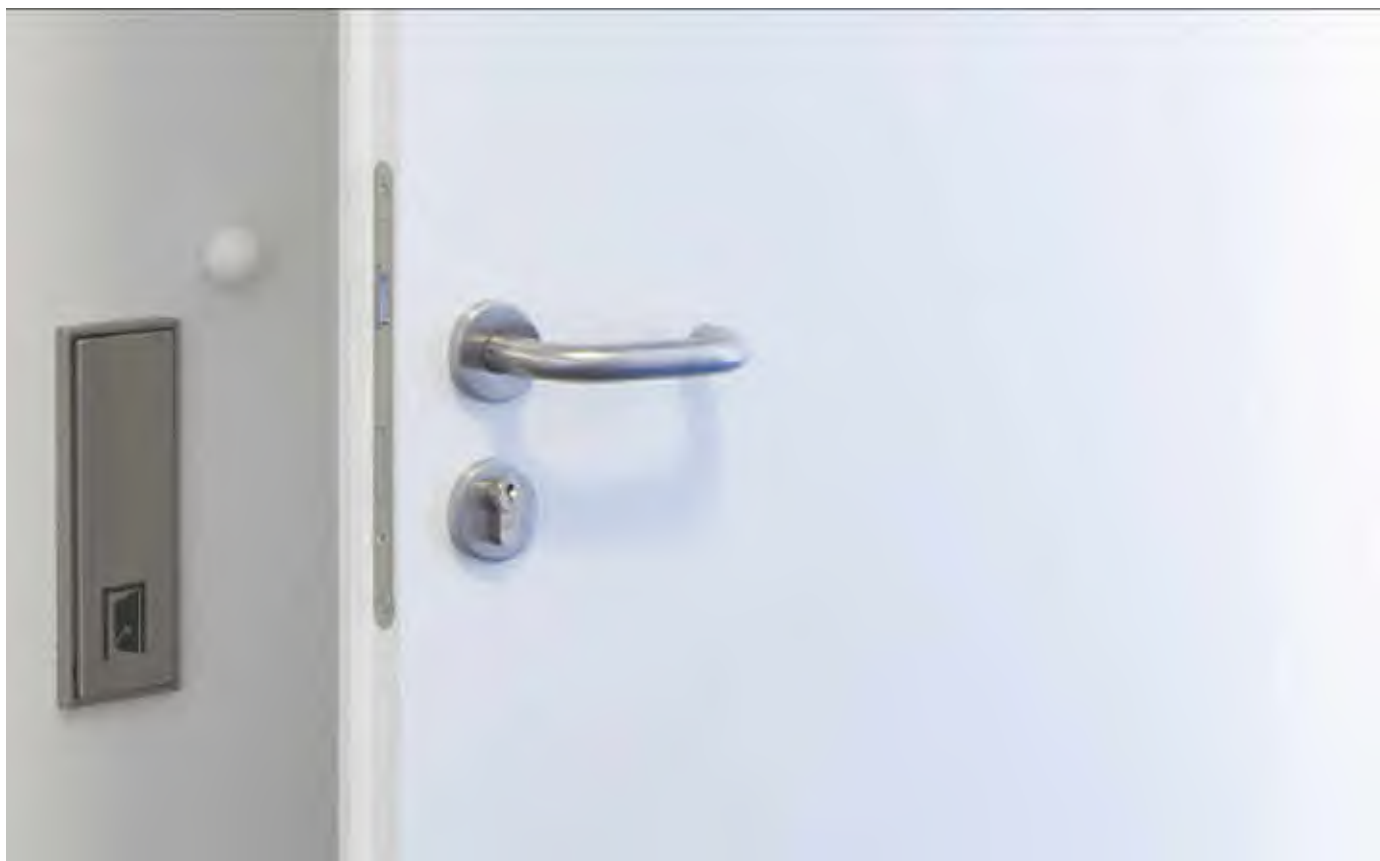
- Emergency key function is available for reversible and serrated keys as well as for locking systems and individual locks
- Locking cylinders are inspected for fire protection as per EN 1634-1 or EN1634-2 and meet high safety requirements
- Emergency opening with electronic door fittings such as dormakaba c-lever



Emergency key function for serrated and reversible key systems

# Lever handle - Pure series

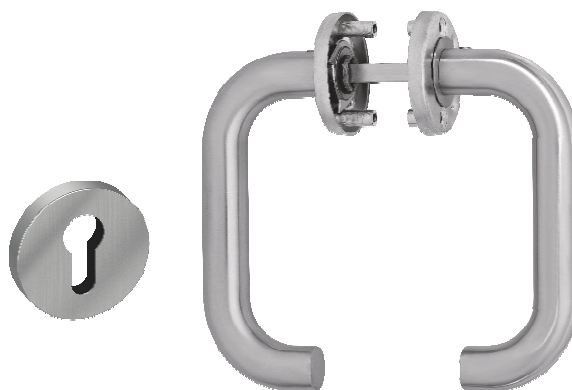
Door furniture for wide stile and narrow stile doors



Sophisticated design and functional quality are the characteristics of the dormakaba Pure range. The fittings excel in terms of both their technology and operating reliability. Manufactured from high-grade materials and carefully crafted, dormakaba Pure door furniture satisfies exacting demands with respect to stability, safety and corrosion resistance.

**Simply impressive:**

- Back to back fixing
- Approved to EN 1906
- Finish : Satin stainless steel

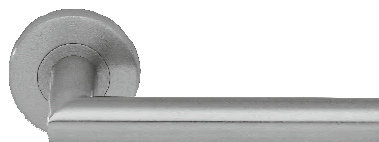


Roses and backplates with integral springing

## The Pure range of timber doors



Pure 8100



Pure 8906



Pure 8998



Pure 3020

## The Pure range of narrow stile doors



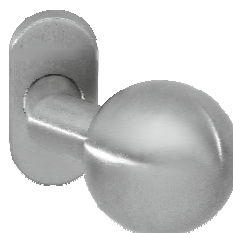
Pure 8100



Pure 8100V



Pure 8906



Pure 3548 V

# Pull Handles

## Door furniture for wide stile and narrow stile doors



dormakaba offers a wide selection of pull handles for both tempered glass doors and solid material doors made of aluminum, wood, PVC, or mixed material: locking and non-locking ladder pulls, back-to-back pulls, customized handle solutions, and a variety of finishes and materials.

### Simply impressive:

- For glass, wood and aluminium doors
- Suitable for 35mm thick door, Extended Spindle available upto 65mm door thickness
- SS 304 / SS 316
- Finish : Satin stainless steel

# The pull handle range of tempered glass doors and solid material doors

## D Type

---

150 x 19mm

---

200 x 19mm

---

300 x 22mm

---

350 x 25mm

---

450 x 25mm

---

600 x 32mm


## H Type

---

600 x 32mm

---

450 x 25mm

---

600 x 32mm

---

800 x 32mm

---

1000 x 38mm

---

1200 x 38mm


## D Type Offset

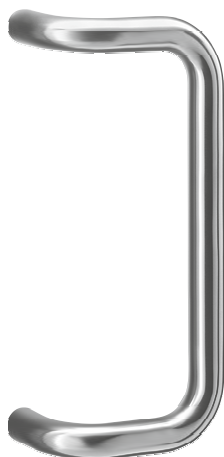
---

350 x 25mm

---

450 x 25mm

---

600 x 25mm


## Lockable Pull handle

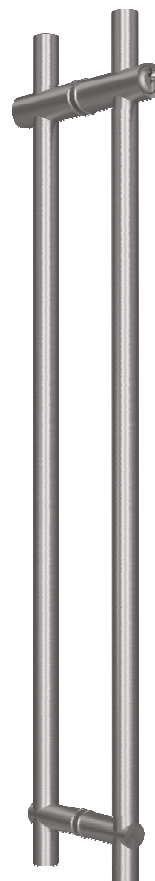
---

1200 x 35mm

---

1350 x 35mm

---

1500 x 35mm




# Concealed Hinges

## The concealed solutions for perfect closure



CONCEALEO® door hinges are setting the trend. Even though demands for functionality are growing - modern door hinges cater to a wide range of load bearing capacities - the hardware needs to be as invisible as possible from the outside. With the CONCEALEO® product range, dormakaba provides an all-embracing product line-up. With load bearing capacities of 40 to 350 kilograms per pair, it covers the entire door spectrum from the simple domestic door to the highly complex commercial property door. The choice of material provides the basis for creating a range of concealed hinges for all door weights. dormakaba only uses true steel for the hinge's body which is machined, not cast.

**Simply impressive:**

- Three dimensional adjustable hinge
- 180° opening angle
- UL listed and fire rating versions also available
- Material : Steel/Aluminium
- Approved to EN 1935
- 11 different finishes available

Model	LCC* (kg)
HS 40	40
FA 60	60
EA 60	60
DA 100	100
DH 120	120
DS 120	120
CH 150	150

Model	LCC* (kg)
CH 200	200
CS 300	300
BH 200	200
BS 250	250
AH 300	300
AS 350	350

\*Load carrying capacity (kg)

# Stainless Steel Hinges

Hinges for timber & metal doors



Hinges play a crucial and decisive part on the function of the door and to meet different design and functional requirements. dormakaba has an extensive product range to select from. These butt hinges are tested for performance as per EN 1935. All hinges shall be template drilled and suitable for both metal and timber doors.

**Simply impressive:**

- 5 Knuckle 2 Ball bearing butt hinge
- Material : Stainless steel
- Approved to EN 1935
- Finish : SSS



Fire Rated	Dimension
3043 F	4.0" x 3.0" x 3mm
3047 F	4.0" x 3.5" x 3mm
3044 F	4.0" x 4.0" x 3mm
3094 F	4.5" x 4.0" x 3mm
3053 F	5.0" x 3.0" x 3mm
3057 F	5.0" x 3.5" x 3mm
3054 F	5.0" x 4.0" x 3mm

Available for wood and metal doors

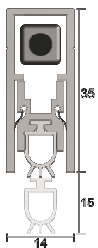
# Seals

## Doors sealing systems

For doors and windows to function, they must have gaps between their edges and their frame, these gaps allow intrusion of noise, smoke, fire, rain, insects etc. The solution is to get the right seal for right door type which seals the gap around the doors when closed to seal against combination of intrusions and leakages. Properly fitted, they can provide a complete and continuous seal for all door type that will not impede normal use.

### Automatic Door Bottom Seals

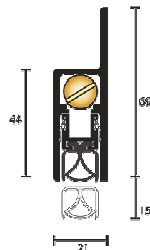
#### IS8010si



##### Simply impressive:

- Concealed fixing
- Location : Single and double butt hinged doors
- Available lengths : 820, 920, 1070, 1220mm
- Seal Material : Silicon rubber
- Fire rated

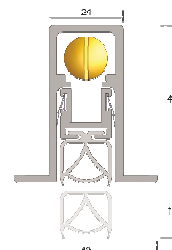
#### IS8090si



##### Simply impressive:

- Face mounted or semi mortised
- Location : Single and double butt hinged doors
- Available lengths : 920, 1070, 1220, 1500mm
- Seal Material : Silicon rubber
- Fire rated

#### IS8100si

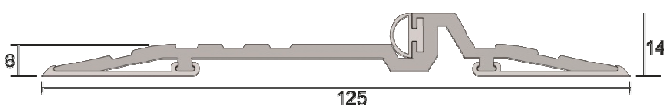


##### Simply impressive:

- Concealed heavy duty seal
- Location : Single and double butt hinged doors
- Available lengths : 920, 1070, 1220, 1500mm
- Seal Material : Silicon rubber
- Fire rated

### Threshold Plate Seals

#### IS4220si

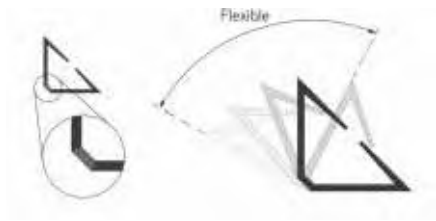


##### Simply impressive:

- Location : Door sill
- Seal size : Available in stock lengths
- Seal Material : Silicon rubber
- Fire rated

## Perimeter Seals

### IS1212FW

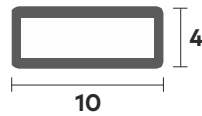


#### Simply impressive:

- Location : Around rebated frames of single or double butt hinged doors
- Seal size : Available in doorset sizes
- Seal Material : Rigid PVC
- Fire rated

## Intumescent Seals

### KP1004



#### Simply impressive:

- Location : Mortised into the door or frame stiles and head
- Seal size : Available in stock lengths
- Seal Material : Intumescent infill with flexible PVC Holder

### KP2004

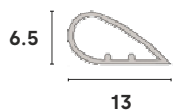


#### Simply impressive:

- Location : Mortised into the door or frame stiles and head
- Seal size : Available in stock lengths
- Seal Material : Intumescent infill with flexible PVC Holder

## Perimeter Seals

### IS1046si

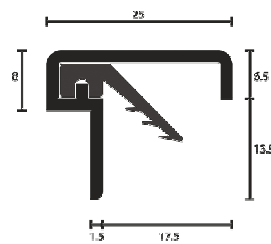


#### Simply impressive:

- Location : Door stops around the perimeter of single swing doors
- Seal size : Available in meters
- Seal Material : Silicon
- Fire rated

## Astragal Seals

### IS7060si



#### Simply impressive:

- Location : Meeting stile of double butt hinged doors
- Seal size : Available in stock lengths
- Seal Material : Silicon rubber



# EntriWorX EcoSystem

**One single EcoSystem for everyone.**

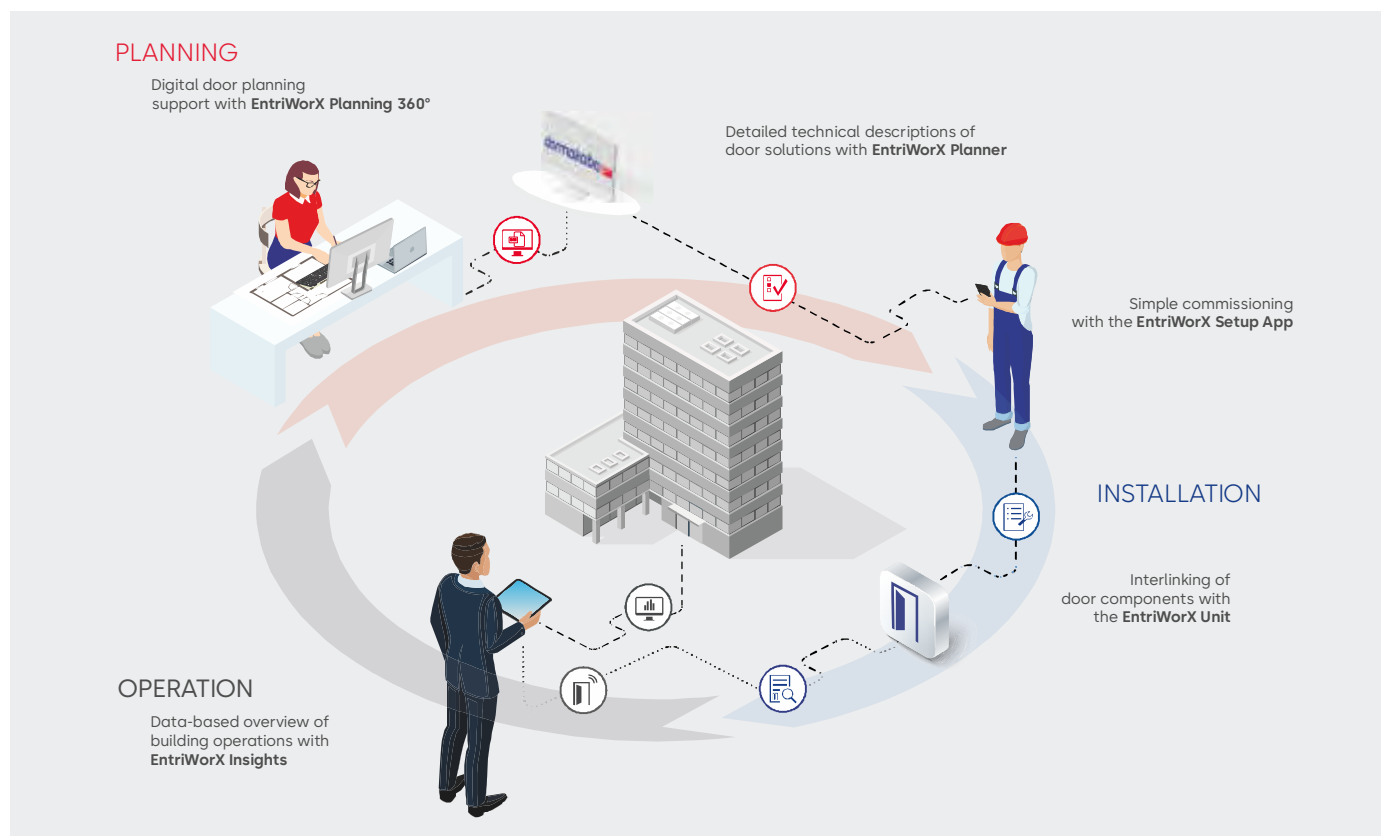
Improving productivity, collaboration and planning security:

EntriWorX, the EcoSystem for planning, installing and operating door systems. Ideal for architects, planners, installers, facility management and anyone involved in the building construction process and building lifecycle. A digital environment for collaborative working. All planning documents and access information is accessible online to everyone involved.



# One EcoSystem for everyone

## Productively plan, install and operate access solutions.



### Planning

#### Efficient planning

**EntriWorX Planning 360°**, the web-based collaboration software, simplifies not only the design planning but also communication among all those involved in the planning and implementation of generating the door list. Time constraints, building regulations, safety requirements and ambitious customer needs are easily handled. The technical and operational design plans can be mapped and adapted as needed, for instance by security advisers, installers or by dormakaba itself using the **EntriWorX Planner**. The tool works with predefined templates, which are then provided in the data cloud.

### Installation

#### Faster commissioning

Installation is aided by the user-friendly **EntriWorX Setup App**.

The commissioning process is carried out step by step via smartphone or tablet. Installation errors can be systematically detected and corrected.

The core of the system is the compact hardware **EntriWorX Unit**, which significantly reduces the number of components and wiring required for the installation.

The intelligent controls save valuable installation time and increase productivity.

### Operation

#### All data at a glance, any time

Facility management nowadays works with digital tools and processed performance information:

- Control of room occupancy and people traffic
- Monitoring and analysis of door operation data
- Doors report malfunctions independently
- Maintenance and repairs according to actual requirements of the door
- Integration with API interfaces

**EntriWorX Insights** provides more transparency and efficiency and makes it possible to operate door systems pro-actively based on historical data.

# EntriWorX Planning

## Digitized and collaborative door planning

For design planning: **EntriWorX Planning 360°**

- Open BIM ready, Autodesk-Revit and IFC files, 2D CAD formats.
- Complex situations and interdependencies can be visualized in 3D.
- Effective issue management via standard interfaces such as BCF.
- Easy import and export of door lists.

For installation planning: **EntriWorX Planner**

- Planning with functional door models from predefined door templates.
- Implementation compliant with standards and building regulations.
- Visualization of access and security zones including component list and connection diagrams.
- Development of technical and operational design planning.

# EntriWorX Installation

## Digitized door installation and commissioning

The central core: **EntriWorX Unit**

- One single device ensures that all function data are exchanged.
- Reduced complexity thanks to easy wiring of the dormakaba components.
- Simple collaboration of different components (even from third-party providers).
- Time-saving installation due to reduced components and less wiring.

The installation app: **EntriWorX Setup App**

- Commissioning is done step-by-step with a smartphone or tablet.
- Malfunctions can be localized digitally.
- Complete documentation like specifications, wiring diagrams, floor plans and connection diagrams, technical drawings for production, component lists and installation videos can be accessed via the **EntriWorX Setup App**.

# EntriWorX Operation

## Efficient building management thanks to access to digital doors

Occupancy Insights: **EntriWorX Insights**

Room occupancy in real time:

- Precise sensor technology.
- The data can be analyzed from anywhere via the cloud.
- Suitable for all doors and open access points.
- Intuitive displays show the current room occupancy.
- Time-saving installation due to reduced components and less wiring.

Remote Support: **EntriWorX Supported Service**

- 24/7 dormakaba service support.
- Monitoring and proactive maintenance that's always on task.
- We keep watch and manage so you can focus where it counts.

Door Insights: **EntriWorX Insights**

Detect faults immediately:

- Interruptions can be prevented proactively.
- Cloud-based data management.
- Integration of door data into existing monitoring, via the API interface.
- Thanks to IoT and "Always On", the operation, maintenance and repairs are adapted to current needs and do not adhere to any predefined maintenance schedule.

All data in your system: **EntriWorX Integrate**

- Integration of door data into smart building operations systems
- Holistic insights across eco-systems to maximize the value of door insights

# Our services.

## For your peace of mind.

**We take care of safe access to your building: from planning to installation to ongoing operations – and beyond.**

### **Increase the product longevity**

With over 150 years of experience as a manufacturer, we contribute our unique expertise to ensure the smooth operation of your access points: for automatic doors, access control, door hardware and everything related to the door.

### **Operate building solutions securely**

Secure access and a positive user experience throughout the site are a top priority for owners, users and investors – whether it's hotels, hospitals, shops, airports or offices.



## Your service benefits at a glance:



**Quick help** – we provide quick, hassle-free assistance in case of malfunctions.



**More cost-effectiveness** – regular maintenance increases the product longevity of your systems and thus saves time and money.



**High level of security** – through regular maintenance, we actively prevent potential malfunctions, downtimes and, therefore, danger.



**Legal certainty** – We provide competent support in fulfilling your obligations as a building operator.



**Maximum comfort** – smooth people flow for a positive user experience.



**Increased building value** – utilise modernisation for even greater convenience, efficiency and sustainability.

**Modernisation and upgrades**

Ensure the long-term functionality, security and protection of your access solutions.

**Installation**

Everything from a single source: as the manufacturer, we also carry out installation and commissioning.

**Training**

We offer you comprehensive specialist training courses and webinars.

**Maintenance**

Regular maintenance, checks and documentation.

**Updates and consulting**

We advise you on system solutions and keep your software secure.

**Repair**

We'll get you up and running again. We solve problems quickly and easily.

**dormakaba Services.**  
Everything for your security.

**Comprehensive service.**

We support you in all building phases and throughout the entire product lifecycle. You can contact us 24/7 in the event of malfunctions.

**Maintenance contract security.**

As a maintenance customer, you benefit from regular checks and thus from fewer malfunctions and greater reliability. You also receive exclusive conditions and individual modernisation proposals.

**The greatest possible cybersecurity & compliance.**

In addition to your hardware, we also keep your software for access and time up to date. This ensures that your systems work smoothly and remain protected from cyber attacks.

**Intelligent maintenance of the future.**

We're driving digitalisation in service and developing tools that enable comprehensive data analysis and thus even more on-demand maintenance. Would you like to learn more?



**Contact us.**

We're here for you.

[dormakaba.com/in-en/service](https://dormakaba.com/in-en/service)



# Sustainability

## How do we see our world?

With full responsibility



**Sustainability is something that can be built in. Throughout our entire value-creation chain, we harmonise economic, ecological and social responsibility. The result: The future is already contained within all our solutions today.**

**An environmental product declaration (EPD)** is a prevalent industry standard developed as per international standards ISO 14025, 14040, 14044 and European standard EN 15804. EPDs create transparency throughout the entire life cycle of a product. With an EPD, environmental impacts on the level of the product or product group can be documented. As part of our commitment to contributing to environmentally friendly buildings, we became a member of the German Institute of Building and the Environment (IBU), our partner in creating EPDs, in 2010.

#### **More information on our commitment to sustainability and our EPDs from the product areas**

- Door hardware
- Entrance systems
- Electronic access & data
- Mechanical key systems

**can be found here:**

[www.dormakabagroup.com/en/sustainability](http://www.dormakabagroup.com/en/sustainability)



#### **Sustainability as a factor for success.**

If you'd like to be a trusted industry leader, you have to utilise transparent reporting and recognised product declarations. With us, you know you get longevity in every regard. To continually improve ourselves, we seek open and transparent dialog with every stakeholder group – that means you.

#### **Certification and declaration.**

We know how important the environment is. Building certification systems are an important factor in the global construction industry. We support the requirements of the building certification systems by providing an extensive portfolio.

#### **Plan with an eye to the future.**

Today, sustainable construction requires flexible product solutions. With our module access solutions, you're not only able to save resources, but also improve the wellbeing of the people who use the buildings.

#### **The pleasure of saving energy.**

Thanks to our well-thought-out product systems, barrier-freedom can be combined with thermal separation. For instance, automatic sliding doors have excellent insulation values thanks to improved thermal separation of the profiles. Reducing energy consumption is sustainability in practice.



# Strategic framework for sustainability



## People

We enable our employees to reach their full potential



## Planet

We're opening the doors up wide for a low-CO<sub>2</sub> recycling economy






## Partnerships

We work together to promote sustainable development beyond our own front doors

# Our contribution to the UN goals for sustainable development

Purpose	Essential topics	Key objective	Contribution to SDGs				
<p>We create a fair, integrative and safe corporate culture which enables our employees to be successful. We offer them a workplace where they can continually develop, contribute their ideas openly and be proud of their accomplishments.</p>	<ul style="list-style-type: none"><li>– Fair employment</li><li>– Training/education</li><li>– Diversity and inclusion</li><li>– Work safety and health protection</li></ul>	<p><b>One in three managers is a woman</b></p> <table><tr><td>Target year</td><td>2027</td></tr><tr><td>Reference year FY 20/21</td><td>19 %</td></tr></table>	Target year	2027	Reference year FY 20/21	19 %	<div></div>
Target year	2027						
Reference year FY 20/21	19 %						

Purpose	Essential topics	Key objective	Contribution to SDGs										
We develop innovative and resource-efficient solutions for the recycling economy and do our part for a climate-resilient future. We offer long-lasting, energy-efficient products which help our customers to achieve their own sustainability goals.	<ul style="list-style-type: none"><li>– Energy and emissions</li><li>– Recycling economy and materials</li><li>– Compliance with environmental regulations</li></ul>	<div><b>Reduction in operating emissions by 42% in accordance with a 1.5° future</b></div> <table><tr><td>Target year</td><td>2030</td></tr><tr><td>Reference year FY 20/21</td><td>74,770 mt CO<sub>2</sub>e*</td></tr></table> <div><b>Reducing the emissions of the value-creation chain for purchased goods and services, as well as with the use of purchased products by 25%</b></div> <table><tr><td>Target year</td><td>2030</td></tr><tr><td>Reference year FY 19/20</td><td>1,197,848 mt CO<sub>2</sub>e*</td></tr></table> <div><b>All new product developments and optimisations are covered by our recycling approach</b></div> <table><tr><td>Target year</td><td>2023</td></tr></table>	Target year	2030	Reference year FY 20/21	74,770 mt CO <sub>2</sub> e*	Target year	2030	Reference year FY 19/20	1,197,848 mt CO <sub>2</sub> e*	Target year	2023	<div></div>
Target year	2030												
Reference year FY 20/21	74,770 mt CO <sub>2</sub> e*												
Target year	2030												
Reference year FY 19/20	1,197,848 mt CO <sub>2</sub> e*												
Target year	2023												

\*Reference year FY 2019/2020 in accordance with validation of the Science-Based Targets Initiative

Purpose	Essential topics	Key objective	Contribution to SDGs				
<p>We lead with a good example and are committed to advancing more environmentally friendly practices and supporting the protection of human rights together with our partners. With our secure access solutions, we're also contributing to the health and safety of people. We work together with partners to raise awareness of the safe handling of our products.</p>	<ul style="list-style-type: none"><li>- Human rights</li><li>- Customer health and safety</li><li>- Development of our own sustainable supply chain</li></ul>	<p><b>External evaluation of all high-risk suppliers with regard to their sustainability management or terminating cooperation should participation be lacking</b></p> <table><tr><td>Target year</td><td>2027</td></tr><tr><td>Reference year FY 20/21</td><td>10%</td></tr></table>	Target year	2027	Reference year FY 20/21	10%	<div><div></div><div></div><div></div></div>
Target year	2027						
Reference year FY 20/21	10%						

# Notes.



## Our Sustainability Commitment

We are committed to foster a sustainable development along our entire value chain in line with our economic, environmental and social responsibilities toward current and future generations. Sustainability at product level is an important, future-oriented approach in the field of construction. In order to give quantified disclosures of a product's environmental impact through its entire life cycle, dormakaba provides Environmental Product Declarations (EPD), based on holistic life cycle assessments.

[www.dormakaba.com/sustainability](http://www.dormakaba.com/sustainability)



## Our offering

### Access Automation Solutions

Entrance Automation  
Entrance Security



### Access Control Solutions

Electronic Access & Data  
Escape and Rescue Systems  
Lodging Systems



### Access Hardware Solutions

Door Closers  
Architectural Hardware  
Mechanical Key Systems



### Services

Technical Support  
Installation and commissioning  
Maintenance and Repair



### Key & Wall Solutions

Key Systems  
Movable / Sliding Walls



### Safe Locks

Electronic Safe Locks  
Mechanical Safe Locks  
Boltworks and Accessories



### Glass systems

Manual door systems  
Glass fittings  
Horizontal Sliding Walls



05/24, Access Hardware Solutions

Subject to change without notice.

**dormakaba India Private Limited**  
Plot No. 48/3, Mahindra World City  
8th Avenue, Anjur Village  
Chengalpattu District  
Tamil Nadu 603 002. INDIA  
T +91 44 67 400 200  
[enquiry.india@dormakaba.com](mailto:enquiry.india@dormakaba.com)  
[www.dormakaba.com/in-en](http://www.dormakaba.com/in-en)

**SERVICE TOLL FREE**  
**1-800 -121- 6414**



[dormakaba.com/in-en](http://dormakaba.com/in-en)